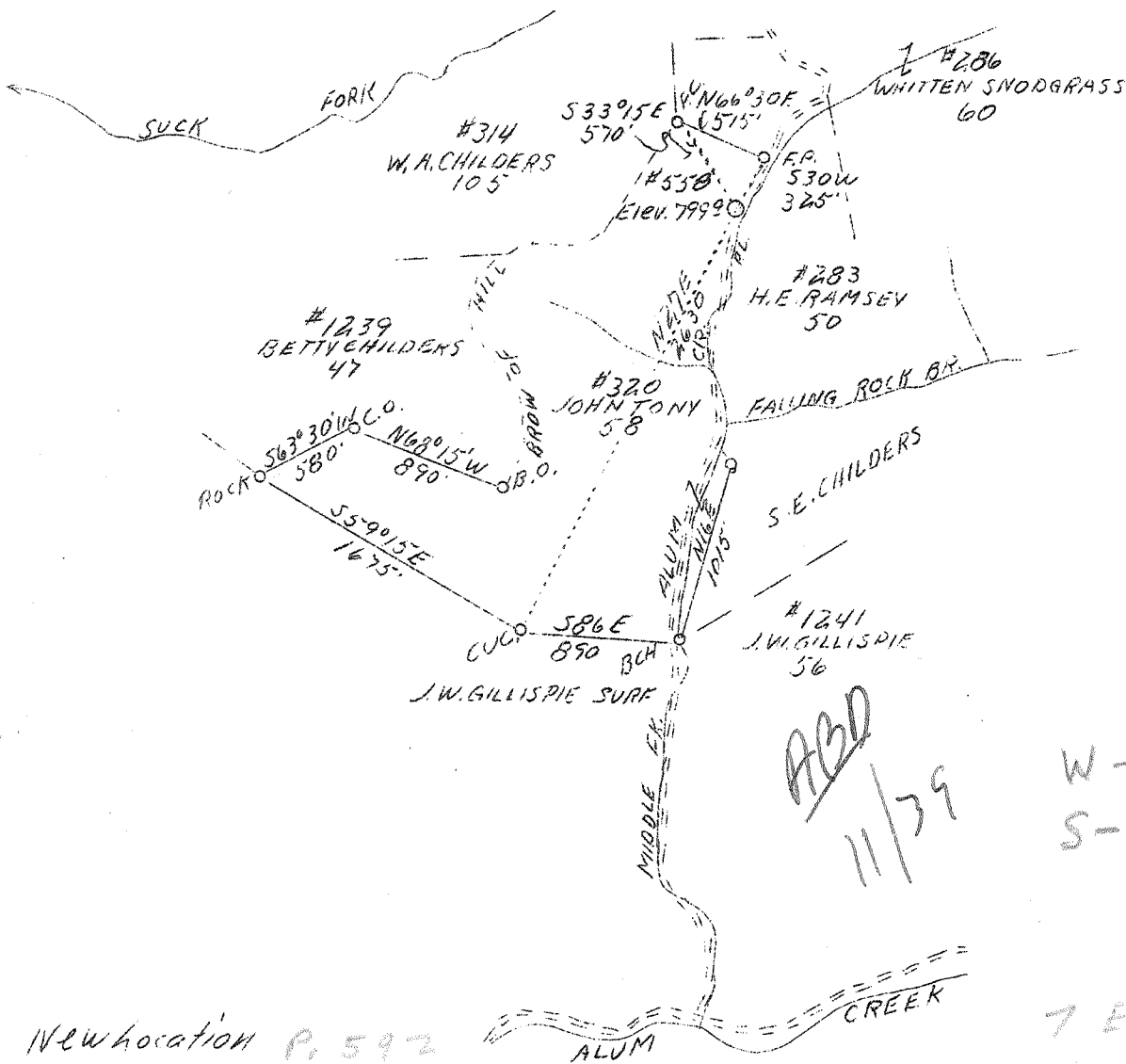


LATITUDE 38° 20'

LONGITUDE 81° 45'

J421



New location P. 592

7 EC (3-4)

Company The Owens, Libbey, Owens Gas Dept.
 Address Charleston, W. Va.
 Farm John P. Tony Et. Al.
 Acres 58
 Lease No. 320
 Serial No. 558
 Well (Farm) No. 1
 El. (S.L.) 799.9
 Quadrangle Saint Albans - SE
 County Kanawha
 District Washington
 Eng. T.S. Flournoy
 Eng. Reg. No. 269
 Date 7/24/39
 Scale 1" = 1000'

STATE OF WEST VIRGINIA
 Department of Mines
 OIL AND GAS DIVISION
 Charleston

WELL LOCATION MAP
 File No. Kan-649

x Denotes location of well on U.S. Topographic Maps, scale 1 to 62,500, latitude and longitude lines being represented by border lines as shown.

- Denotes one inch spaces on border line of original tracing.

Samples 16-K (2246 - 4780) / 3-0 277 Deep Well ✓

WEST VIRGINIA DEPARTMENT OF MINES
OIL & GAS DIVISION
W E L L R E C O R D

Permit No. Kan-649
St. Albans Quad.

Dry Hole

CASING & TUBING

Company	The Owens, Libbey-Owens Gas Dev't.,	13	23
Address	Box 1375, Charleston, W. Va.	10	321
Farm	John P. Toney, et al	8-1/4	1614
Location	Alum Creek		
Well No.	558	Coal at 419'	48"
District	Washington - Kanawha County		
Surface & Mineral Address	John P. Toney		
Commenced	Aug. 28, 1939		
Completed	Nov. 6, 1939		
Shot	11/9/39 - Depth 3396-3950		
Open Flow	4/10ths W in 2" orifice 54 Mcf		
Volume	63,000 c.f.		
Rock Pressure	-		
Fresh Water	52		
Salt Water	965		

Formation color ^{ft} _{SP} TOP Base					Formation color ^{ft} _{H.} TOP Base					
Earth & Gravel	gr	s	0	24		Slate&Shells	drk	s	3203	3258
Slate	drk	s	24	85	FW 52'	Slate&Shells	lgt	s	3258	3290
Sand	wh	s	85	123	1/2 blr.hr.	Slate&Shells	drk	s	3290	3461
Slate	drk	s	123	171	FW 123	Shale	brn	s	3461	3491
Sand	wh	s	171	315	Hole F.	Shell	drk	h	3491	3508
Slate	wh	s	315	321		Shale&Shells	drk	s	3508	3520
Sand	wh	s	321	351		Shell	drk	h	3520	3527
Slate	drk	s	351	374		Slate&Shells	drk	s	3527	3555
Sand	wh	s	374	419		Slate&Shells	lgt	h	3555	3583
Coal	blk	s	419	423		Slate&Shells	lgt	s	3583	3623
Slate	wh	s	423	448		Shell	drk	h	3623	3633
Slate	gr	s	448	786		Slate	lgt	s	3633	3688
Sand	lgt	s	786	804		Slate&Shells	lgt	s	3688	3725
Slate	wh	s	804	829		Shale	brn	s	3725	3749
Sand	wh	h	829	849		Slate	drk	s	3749	3795
Slate	lgt	s	849	863		Shale	brn	s	3795	3853
Salt Sand	lgt	h	863	1162	SW 965-	Slate&Shells	brn	s	3853	3962
Slate	drk	s	1162	1165	979	Slate&Shells	lgt	s	3962	3999
Salt Sand	wh	h	1165	1344		Slate	lgt	s	3999	4325
Slate	drk	s	1344	1365		Slate	drk	s	4325	4470
Sand	dark	h	1365	1391		Shale	brn	s	4470	4566
Slate&Shells	drk	s	1391	1414		Shale	blk	s	4566	4660
Sand	wh	h	1414	1463		Corniferous				
Slate	drk	s	1463	1480		Lime	drk		4660	4733
Slate&Shells	drk	h	1480	1504		Oriskany Sand	wh		4733	4738
Red Rock	red	s	1504	1508		Lime	drk		4738	4744
Slate&Shells	drk	m	1508	1559		Oriskany Sand	wh		4744	4754
Little Lime	drk	h	1559	1592		Lime	drk		4754	4780
Big Lime	wh	h	1592	1674						
Big Lime	yel	h	1674	1777		Total Depth				4780
Injun Sand	red	h	1777	1835						
Slate&Shells	drk	s	1835	1958		Gas 3165 -	3,500	c.f.		
Slate&Shells	lgt	s	1958	2215		" 3461 -	3,100	c.f.		
Slate&Shells	drk	s	2215	2246		" 3527 -	19,800	c.f.		
Shale	brn	s	2246	2254		" 3802 -	5,500	c.f.		
Berea Sand	wh	h	2254	2262						
Shale&Shells	lgt	s	2262	2290						
Slate&Shells	lgt	s	2290	2507						
Shells	lgt	s	2507	2529						
Slate&Shells	lgt	s	2529	2637						
Shells	gr	h	2637	2655						
Slate&Shells	lgt	s	2655	3203						