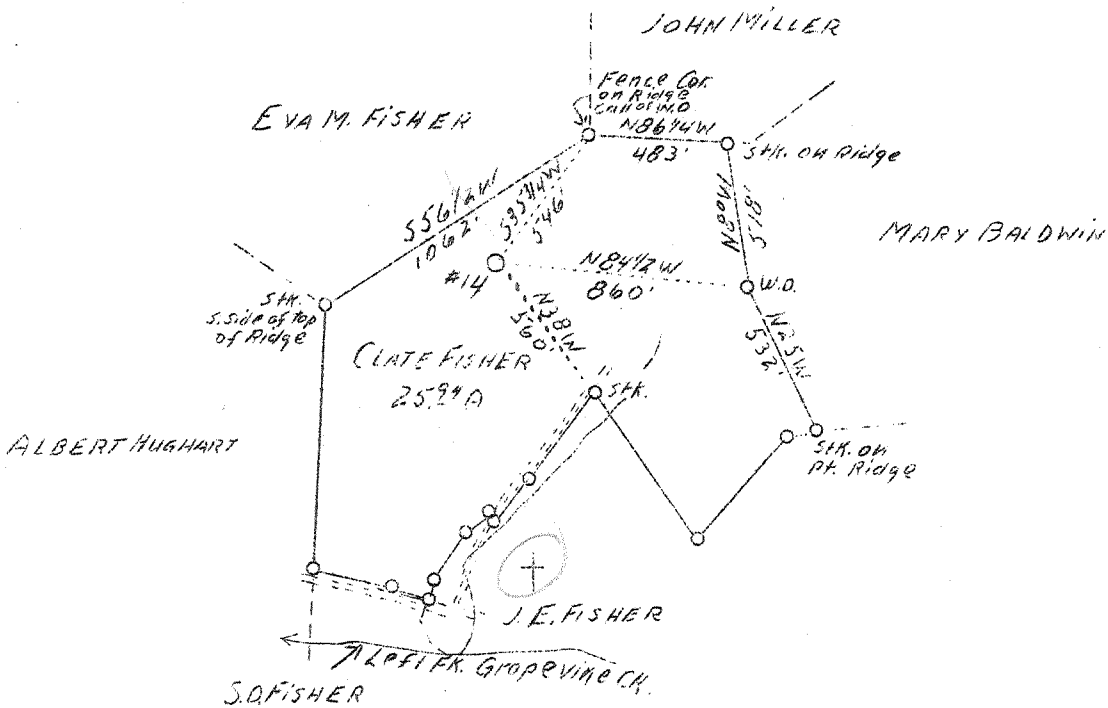


LATITUDE 38°35'

LONGITUDE 81°30'



W - 4.12
S - 5.25

New Location

Company Brawley-Reid Oil & Gas Co.
 Address Charleston, W. Va.
 Farm Clate Fisher
 Acres 25.94
 Lease No. 40
 Well (Farm) No. 1
 Serial No. 14
 Elevation (SL) 1122.28
 Quadrangle *SE* Kenna
 County Kanawha
 District Poca
 Engineer Lorin H. Talbot
 Eng. Reg. No. 412
 Date July 29, 1939
 Scale 1" - 660'

STATE OF WEST VIRGINIA
 Department of Mines
 OIL & GAS DIVISION
 Charleston

WELL LOCATION MAP

File No. KAM-651

x Denotes location of well on U. S. Topographic Maps, scale 1 to 62,500, latitude and longitude lines being represented by border lines as shown.

- Denotes one inch spaces on border line of original tracing.

V

WEST VIRGINIA DEPARTMENT OF MINES

OIL & GAS DIVISION

W E L L R E C O R D

Permit No. Kan-651

Gas Well

Kenna Quad.

CASING & TUBING

Company	Brawley-Reid Oil & Gas Co.	10	638
Address	Charleston, W. Va.	8-3/8	2007
Farm	Clate Fisher ACRES 25.94	7	5109
Location	Grappvine Creek		
Well No.	14 ELEV. 1122.28		
District	Poca - Kanawha County	Packer - Spang	
Surface & Mineral Address	Clate Fisher, et al Sissonville, W. Va.	Size -	
Commenced	9/4/39 - completed 11/21/39	Depth set -	
Open Flow	2/10ths Water in 7 inch 14/10 Marc. in 7 inch	5109' of 7" casing cemented 11/9/39	
Volume	6,000,000 c.f.		
Rock Pressure	1030 lbs. 12 hrs.		
Salt Water	1400		

Formation Color ^{ft}/₃ Top Base Result Formation Color ^{ft}/₃ Top Base Result

Soil		0	6						
Clay		6	12						
Red Rock		12	40						
Sand		40	55						
Red Rock		55	150						
Sand		150	240						
Red Rock		240	395						
Sand		395	425						
Slate		425	445						
Red Rock		445	520						
Sand		520	570						
Pink Rock		570	580						
Slate		580	593						
Sand		593	615						
Slate		615	623						
Sand		623	695						
Slate		695	705						
Sand		705	745						
Slate		745	820						
Sand		820	1000						
Slate		1000	1055						
Sand		1055	1085						
Slate		1085	1215						
Sand		1215	1265						
Slate		1265	1285						
Salt Sand		1285	1723	Salt Water - hole full	1400				
Maxon Sand		1723	1755						
Slate		1755	1757						
Little Lyle		1757	1800						
Pencil Cove		1800	1805						
Big Lyle		1805	1952						
Injun Sand		1952	2000	Showing of gas	2300				
Slate		2000	2002						
Lime Shell		2002	2110						
Slate-shells		2110	2285						
Lime Shells		2285	2320						
Slate Shells		2320	3616						
Brown Shale		3616	3645						
Lime Shells		3645	3940						
Brown Shale		3940	4280						
White Slate		4280	4750						
Brown Shale		4750	5000	Shale gas	4765				
White Slate		5000	5040						
Black Shale		5040	5092						
Corniferous Lime		5092	5217	Halliburton measurement					
Oriskany Sand		5217		Gas 5217-2/10 W. 7 in. O. D. 22#					
Total Depth		5253							