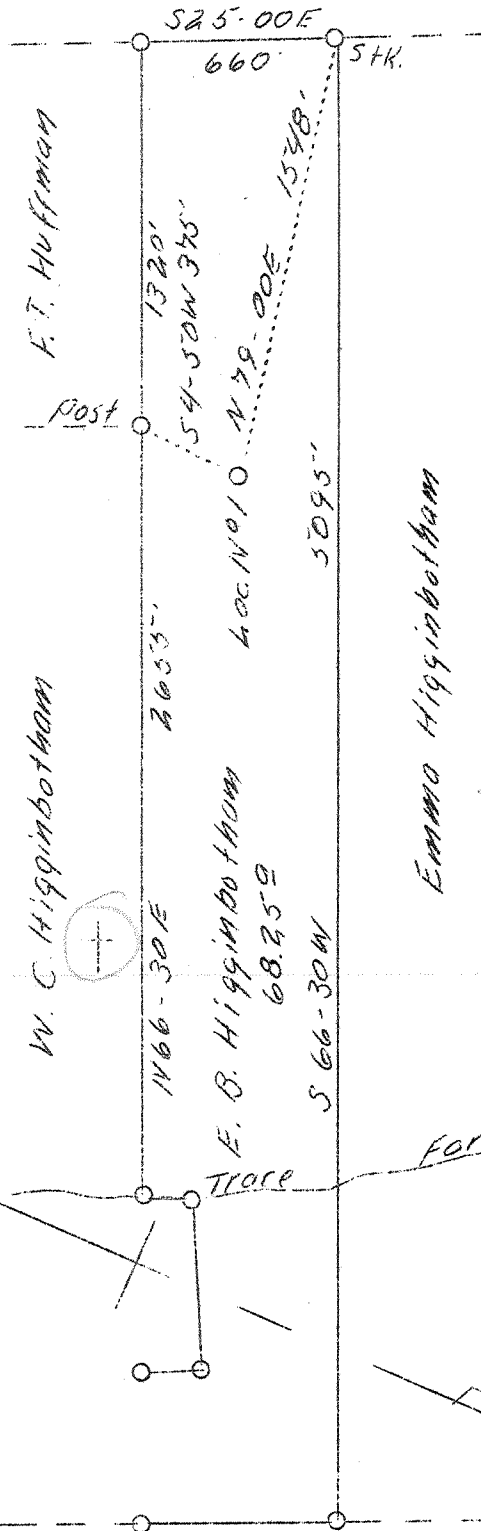


LATITUDE 38° 40'

Poca Coal Land Co. (min.)

LONGITUDE 81° 33'



W - 4.45
S - 5.6

ABD
9/46

New location

Company	United Carbon Co.
Address	Charleston, W. Va.
Farm	E. B. Higginbotham, etal
Acres	68.25
Lease No.	3399
Well (Farm) No.	1
Serial No.	805
Elevation (SL)	-
Quadrangle	C Kenna
County	Kanawha
District	Poca
Engineer	E. G. Withrow
Eng. Reg. No.	-
Date	Aug. 3, 1939
Scale	1" = 660'

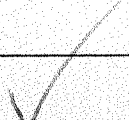
STATE OF WEST VIRGINIA
 Department of Mines
 OIL & GAS DIVISION
 Charleston

WELL LOCATION MAP

File No. KOM-657

x Denotes location of well on U. S. Topographic Maps, scale 1 to 62,500, latitude and longitude lines being represented by border lines as shown.

- Denotes one inch spaces on border line of original tracing.



WEST VIRGINIA DEPARTMENT OF MINES

OIL & GAS DIVISION

W E L L R E C O R D

Permit No. Kan-652
Kanna Quad.

Gas Well
CASING & TUBING

Company	United Carbon Co.	16 conductor 16	16
Address	901 Union Bldg. Charleston, W. Va.	10-3/4	809 809
Farm	E.B. Higginbotham ACRES 68.25	6-5/8	2140 2140
Location	Trace Fork	6-5/8	5077 5077
Well No.	1 ELEV. 925.1	2-3/8	5185 5185
District	Poca - Kanawha County		
Surface & Mineral	E. B. Higginbotham, Albany, Ohio		
Commenced	Aug. 21, 1939	CASING CELENTED:	
Completed	Dec. 13, 1939	8-5/8	635' 10/6/39
Shot	Not shot	6-5/8	240 12/3/39
Open Flow	120/10ths Merc. in 6-5/8" O.D.		
Volume	14,936,000 c.f.		
Rock Pressure	1680 lbs. 36 hrs.		
Salt Water	1160 and 1595		

Formation Color TOP Base Resist

Formation	Color	TOP	Base	Resist
Soil		0	16	
Rock	red	16	25	
Sand		25	35	
Rock	red	35	70	
Sand		70	85	
Rock	red	85	220	
Sand		220	250	
Rock	red	250	275	
Sand		275	290	
Rock	red	290	305	
Lime		305	315	
Rock	red	315	430	
Lime		430	445	
Slate		445	520	
Rock	red	520	587	
Sand		587	620	
Rock	red	620	690	
Sand		690	773	
Rock	pink	773	785	
Slate		785	810	
Sand		810	845	
Slate		845	855	
Sand & Lime		855	1040	
Slate		1040	1140	
Sand		1140	1175	
Slate & Shells		1175	1490	W 1160 3 bailers per hr.
Sand		1490	1565	
Slate		1565	1575	W 1595 hole full
Salt Sand		1575	1900	
Lime Little		1900	1927	
Lime Big		1927	2048	
Sand Injun		2048	2075	
Slate		2075	2120	
Sand Injun		2120	2138	
Slate & Shells		2138	2517	
Shells Bore		2517	2635	Gas 2522 Show
Slate & Shells		2635	3765	
Shale	brn	3765	3855	
Slate & Shells		3855	4170	
Shale	brn	4170	4330	
Slate	wh	4330	4770	
Shale	brn	4770	5000	
Shale	blk	5000	5057	
Lime Corniferous		5057	5163	
Sand Oriskany		5163	5190	
Total Depth			5190	