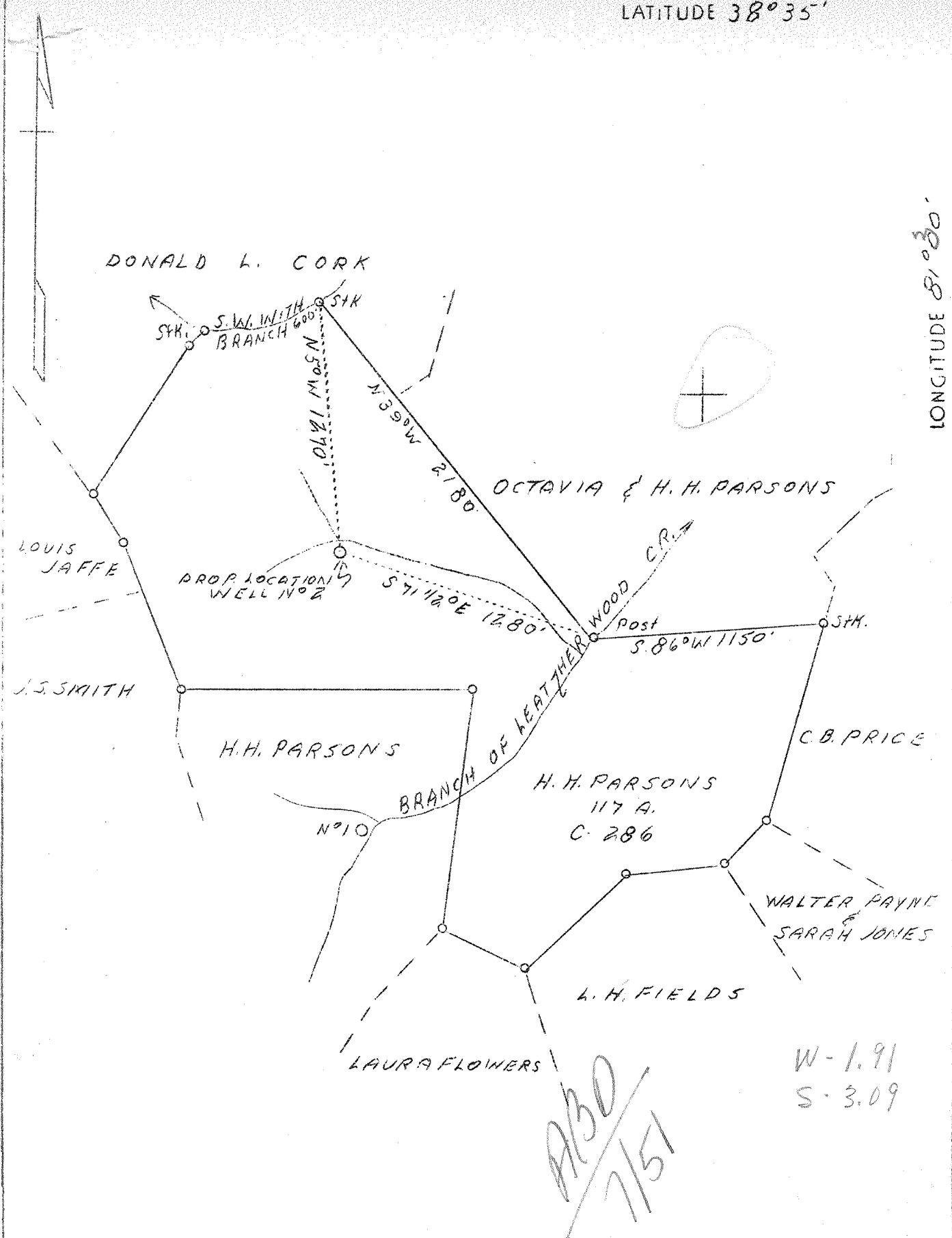


4-21

P

LATITUDE 38° 35'

LONGITUDE 81° 30'



ABO
7/51

W-1.91
S-3.09

New location P 513 7 c (2-2)

Company Columbian Carbon Co.
 Address Box 1240 Charleston, W.Va.
 Farm H.H. Parsons
 Acres 117
 Lease No. C - 286
 Well (Farm) No. 2
 El. (S.L.) 894.6
 Quadrangle Kenna S.E.
 County Kanawha
 District Poca
 Eng. James N. Sell
 Eng. Reg. No. 772
 Date 8/4/39
 Scale 1" = 660'

STATE OF WEST VIRGINIA
 Department of Mines
 OIL AND GAS DIVISION
 Charleston

WELL LOCATION MAP

File No. KOH-656

x Denotes location of well on U.S. Topographic Maps, scale 1 to 62,500, latitude and longitude lines being represented by border lines as shown.

- Denotes one inch spaces on border line of original tracings.

✓ Deep Well

WEST VIRGINIA DEPARTMENT OF MINES

OIL & GAS DIVISION

WELL RECORD

Permit No. Kan-656

Gas Well

Kenna Quad.

CASING & TUBING

Company	Columbian Carbon Co.,	14	41-2	41-2
Address	Box 1240, Charleston, W. Va.	10-3/4	446-2	87-3
Farm	H. H. Parsons ACRES 117	8-5/8	1809-10	1809-10
Location	Br. Leatherwood Creek	7	4995-11	4995-11
Well No.	B-1 (GW-433) ELEV. 900.1 DF	2-3/8	5183-10	5183-10
District	Poca - Kanawha County	5	93-10	93-10
Surface & Mineral	H. H. Parsons, et al			
Address	R. 2, Box 75, Elkview, W. Va.			
Commenced	9/1/39 - completed 11/24/39			
Shot	11/24/39 - depth 5083-5135			
Volume	1,356,000 c.f.			
Rock Pressure	950 lbs. 3 days			
Oil	1211 show - 1721 show			
Fresh Water	50 1/3 - 13" blr. pr. hr.			
Salt Water	800 1/3 - 10" blr. hr. 1243 1 - 10" blr. hr. 1258 2 - 10" blr. hr. - 1300' WF			

Formation Color & Top Base Result Formation Color & Top Base Result

Formation	Color	Top	Base	Result	Formation	Color	Top	Base	Result
Clay & Shelly Rock		0	23		Slate		2600	2635	
Sand		23	79	FW 50	Slate & Shells		2635	2920	
Slate		79	90		Slate		2920	3056	
Red Rock		90	125		Slate & Shells		3056	3420	
Sand		125	149		Shale, Slate & Shells		3420	3452	
Slate		149	172		Slate & Shells		3452	3872	
Red Rock		172	263		Brown Shale		3872	4000	
Slate		263	285		Slate & Shells		4000	4155	
Sand		285	305		White Slate		4155	4378	
Red Rock		305	325		Slate & Shells		4378	4403	
Slate		325	335		White Slate		4403	4548	
Shells		335	345		Brown Shale		4548	4828	
Red Rock		345	389		White Slate		4828	4878	
Slate		389	399		Black Shale		4878	4949	SLM*
Sand		399	412		Corniferous Lime	SLM*	4949	5073	SLM*
Slate		412	433		Oriskany	SLM	5073	5100*	
Sand		433	441		Lime Break		5100*	5120*	
Slate		441	479		Oriskany		5120*	5135*	
Sand		479	523		Lime - H		5135	5162	SLM
Slate		523	598		Total Depth		5162'		
Sand		598	665						*Per sample examinations
Slate		665	673						
Sand		673	683		Oil 1211	Show			
Slate		683	716		Gas 1243	small show			
Sand		716	745		Oil 1721	very small show			
Slate		745	790		Gas 1721	very small show			
Sand		790	850	W 800	" 2190	73M			
Slate		850	875		" 2203	103M			
Sand		875	955		" 2250	94M			
Slate & Shells		955	1085		" 2270	84M			
Sand, Shells & Slate		1085	1165		" 2331	84M			
Sand		1165	1168		" 2370	73M			
Slate		1168	1202		" 2460	60M			
Salt Sand		1202	1455	W 1243	" 3833	Exhausted in 10 minutes			
Slate		1455	1473	W 1258					
2nd Salt Sand		1473	1539	WF 1300	PAYS: 5083-5090; 5099-5104; 5107-5113(?); 5123-5125; 5131-5133				
Pencil Cove		1539	1543		CEMENT RECORD: 8-5/8. Ran 140 sacks cement mixed with 1 sack Aquagel. Ran 4 sacks Aquagel ahead of cement. 10' spacer & plug on top cement. 14' hard cement left in hole. Pat Patterson, Cementer - Halliburton Oil Well Cementing Co. 9/30/39				
Little Lime		1543	1589		11/10/39 Ran 25 sacks Alpha Cement 7" csg. 10' spacer - 2 plugs on top cement. 11' solid cement in pipe after setting. Dick Allen, Cementer - Halliburton Oil Well Cementing Company.				
Sand		1589	1613						
Big Lime		1613	1784						
Big Injun Sand		1784	1791						
Slate		1791	1795	SL:					
Lime	SL:	1795	1798						
Slate & Shells		1798	2053						
Slate		2053	2091						
Slate & Shells		2091	2186						
Berea		2186	2211						
Slate & Shells		2211	2600						