

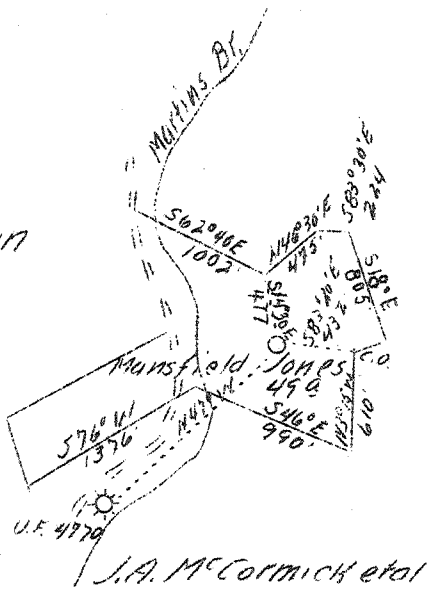
LATITUDE 38°30'

LONGITUDE 81°40'

K.E. Lepp

J.F. Jordan

Geo. McCormick



S-2.28  
W-0.89

New location

Company Godfrey L. Cabot, Inc.,  
 Address 601 Union Bldg.,  
 Charleston, W. Va.  
 Farm Mansfield Jones  
 Acres 49  
 Lease No. 3-535  
 Well (Farm) No. 1  
 Serial No. 934  
 Elevation (SL) 800.° (Ground)  
 Quadrangle *NW* Charleston  
 County Kanawha  
 District Union  
 Engineer O. L. FitzRandolph  
 Eng. Reg. No. 806  
 Date Sept. 5, 1939  
 Scale 1" = 1320'

STATE OF WEST VIRGINIA  
 Department of Mines  
 OIL & GAS DIVISION  
 Charleston

WELL LOCATION MAP

File No. KAN-661

x Denotes location of well on U. S. Topographic Maps, scale 1 to 62,500, latitude and longitude lines being represented by border lines as shown.  
 - Denotes one inch spaces on border line of original tracing.

6-6-192

