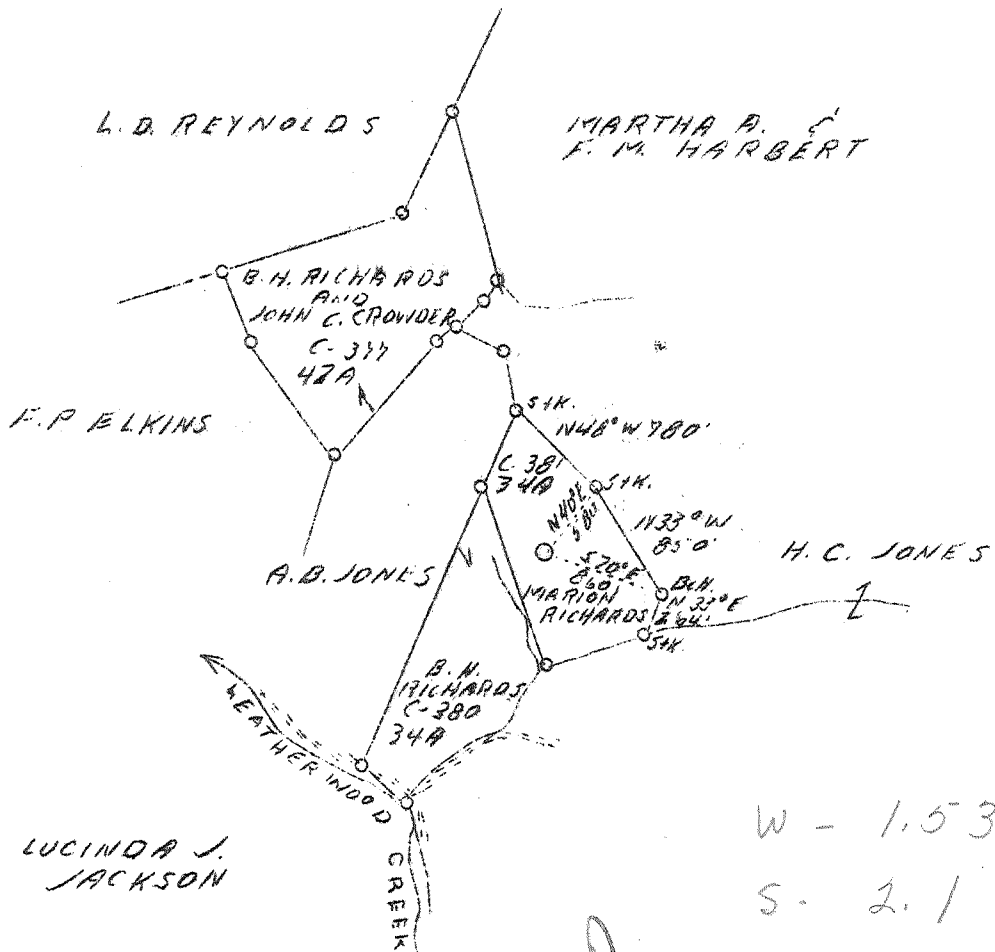


LATITUDE 38° 35'

LONGITUDE 81° 30'



ASD
8/52

1.0 MILE N.W. OF BLUNDON

Sheet # 3

13-17
P-51

New location

Company Columbian Carbon Co.,
 Address Box 1240, Charleston, W.Va.
 Farm B. H. Richards, et al
 Acres 110
 Lease No. C-377, 380 & 381
 Well (Farm) No. 1
 Elevation (SL) 1026.2
 Quadrangle Kenna S. E.
 County Kanawha
 District Poca
 Engineer James N. Sell
 Eng. Reg. No. 772
 Date Sept. 7, 1939
 Scale 1" = 1320'

STATE OF WEST VIRGINIA
 Department of Mines
 OIL & GAS DIVISION
 Charleston

WELL LOCATION MAP

File No. Kan-663

x Denotes location of well on U. S. Topographic Maps, scale 1 to 62,500, latitude and longitude lines being represented by border lines as shown.

- Denotes one inch spaces on border line of original tracing.

Poca District, Kanawha County, W. Va.

By Columbian Carbon Co., Box 1240, Charleston, W. Va.

Drilled under permit Ann-667.

On 110 acres, on Leatherwood Creek.

Elevation, 107.8' L.

Surface and minerals owned by B. H. Richards et al., Millview, W. Va.

(For addresses contact Columbian Carbon Co.)

Drilling commenced Oct. 7, 1939; completed, Feb. 15, 1940.

Shot Feb. 16, 1940, at 5306-5265' (S.M.).

Volume, 1,185,000 cu. ft.

Rock pressure, 1470 lbs. in 8 hrs.

Oil, 671', small show; 1408-05', hole filled 80'.

Fresh water, 100', 1 - 13" bailer runs 5 hrs.

Salt water, 1435', 1 - 10" bailer per hour; 1470', 3 - 10" bailers per hour; 1520', hole full.

11" casing, 21'; 10" casing, 638' 506' 9" left in; 8", 1812' 1";

7", 5172' 6"; 2-3/8" tubing, 5342' 8"; 5" 13' liner, 92' 11".

No packer.

Cement record: 11-15-39: Cemented 8" casing. Ran 75 sacks Alpha cement mixed with 1 sack Aquagel. Ran 5 sacks Aquagel ahead of cement. Plug and 10' spacer run on top Aquagel. 10' solid cement left in pipe. Dallas Holley, Cementer--Halliburton Oil Well Cementing Co.

1-22-40: Cemented 7" casing. Ran 25 sacks Alpha cement. Ran 10' spacer. Plug on top cement. No Aquagel. 13' solid cement in pipe. Dick Allen, Cementer--Halliburton Oil Well Cementing Co.

Gas well. Completion reported to Dept. of Mines March 7, 1940.

Record to NCF from Mrs. Griffith March 27, 1940.

	Top.	Bottom.
Red clay	0	60
Sand (fresh water, 100', 1 - 13" blr. 5 hrs.)	60	100
Slate and shells	100	190
Sand	190	240
Red rock	240	290
Sand	290	330
Red rock	330	400
Slate and shells	400	470
Red rock	470	525
Slate and shells	525	625
Sand (oil, 671', small show)	625	671
Slate	671	690
Sand	690	860
Slate and lime	860	950
Sand	950	1075
Slate	1075	1075
Sand	1075	1120
Slate	1120	1175
Sand	1175	1175
Slate	1175	1260
Sand	1260	1265
Slate	1265	1309
Red rock	1309	1315
Slate	1315	1325
Salt Sand (gas, 1349', small show)	1325	1350
Slate	1350	1370

(OVER)

Top. Bot.

Salt Sand (oil, 1402-05', hole filled 30'; water, 1415', 3 - 10" boiler per hour; water, 1430', 3 - 10" boilers per hour; water, 1520', hole full)	1370 - 1750	
Little lime	1750 - 1770	
lime shell	1770 - 1777	
Pencil Cove	1777 - 1790	(OSM)
Big lime (OSM)	1790 - 1945	
Big Injun Sand (gas, 1955', small show)	1945 - 1970	
Slate and shells	1970 - 2406	
lime	2406 - 2414	
Slate and shells	2414 - 3805	
lime	3805 - 3835	
Slate	3835 - 3950	
Brown shale	3950 - 3974	
Slate	3974 - 4065	
Brown shale	4065 - 4125	
lime and shale	4125 - 4275	
White slate	4275 - 4800	
Brown shale	4800 - 5005	
White slate	5005 - 5040	
Brown shale	5040 - 5070	
Black shale	5070 - 5126	(OSM)
Coniferous lime (OSM)	* 5126 - 5241	(OSM)
Crinkly Sand (gas pays, 5267', 5272-74', and 5277-79') (OSM)	* 5241 - 5284	
lisy sand	* 5284 - 5299	
Crinkly Sand (gas pay, 5300-5306')	* 5299 - 5320	(OSM)
lime	* 5320 - 5329	(OSM)
Total depth (OSM)	5329	

*Also per sample examination.

WEST VIRGINIA DEPARTMENT OF MINES
OIL & GAS DIVISION
W E L L R E C O R D

Permit No. Kan-663
Kenna Quad.

Gas Well

CASING & TUBING

Company	Columbian Carbon Co.	14	21-0	21-0
Address	Box 1240, Charleston, W. Va.	10-3/4	638	506-9
Farm	B. H. Richards ACRES 110	8-5/8	1812-1	1812-1
Location	Leatherwood Creek	7	5172-6	5172-6
Well No.	1 (CW-437) ELEV. 1030.8 DF	2-3/8	5342-8	5342-8
District	Poca - Kanawha County	5" 13#	92-11	92-11
Surface & Mineral	B. H. Richards, et al, Elkview, W.Va.			
Commenced	10/7/39 - completed 2/15/40			
Shot	2/15/40 - Depth 5306-5268 SLM			No packer
Volume	1,485 M.C.F.			
Rock Pressure	1470 lbs. 8 hrs.			
Oil	631 small show; 1402-05-80			
Fresh Water	100 1-13" blr. per hr.			
Salt Water	1415 1-10 blr. per hr.			
	1430 3-10 boiler per hr.			
	1520 - hole full			

Red Clay	0	60	
Sand	60	100	FW 100
Slate&Shells	100	190	
Sand	190	240	
Red Rock	240	290	
Sand	290	330	
Red Rock	330	400	
Slate&Shells	400	470	
Red Rock	470	525	
Slate&Shells	525	625	
Sand	625	634	Sh.0 631
Slate	634	650	
Sand	650	860	
Slate&Lime	860	950	
Sand	950	1035	
Slate	1035	1055	
Sand	1055	1120	
Slate	1120	1135	
Sand	1135	1145	
Slate	1145	1260	
Sand	1260	1285	
Slate	1285	1309	
Red Rock	1309	1315	
Slate	1315	1325	
Salt Sand	1325	1350	Gas 1349- Small sh.
Slate	1350	1370	Oil 1402-5 - hole filled 80'
Salt Sand	1370	1750	W1415
Little Lime	1750	1770	
Lime Shell	1770	1777	W 1430
P. Cave	1777	1790	SLM W 1520
Big Lime	SLM 1790	1945	
Big Injun	1945	1970	Gas 1955 small sh.
Slate&Shells	1970	2406	
Lime	2406	2414	
Slate&Shells	2414	3805	
Lime	3805	3815	
Slate	3815	3950	
Brown Shale	3950	3974	
Slate	3974	4065	
Brown Shale	4065	4125	
Lime & Shale	4125	4275	
White Slate	4275	4800	
Brown Shale	4800	5005	
White Slate	5005	5040	
Brown Shale	5040	5070	

Black Shale	5070	5126	HSLM
Carboniferous	HSLM *5126	5241	CSLM
Oriskany S	CSLM *5241	5284	
Limey Sand	*5284	5299	
Oriskany Sand	*5299	5320	CSLM
Lime - H	*5320	5329	CSLM
Total Depth		5329	CSLM

*Also per sample examination

PAYS: 5267; 5272-74;
5277-79; 5300-5306

CEMENT RECORD: 11/15/39 Cemented 3-5/8" casing. Ran 75 sacks alpha cement mixed with 1 sack Aquagel. Ran 5 sacks Aquagel ahead of cement. Plug and 10' spacer ran on top Aquagel. 10' solid cement left in pipe. Dallas Holley, Cementor, Halliburton Oil Well Cementing co.

1/22/40 cemented 7" casing. Ran 25 sacks Alpha cement. Ran 10' spacer - plug on top cement. No Aquagel. 13' solid cement in pipe. Dick Allen, Cementor, Halliburton Oil Well Cementing Co.

5126 5241 5320
1026 1026 1026

4100 4215 4294