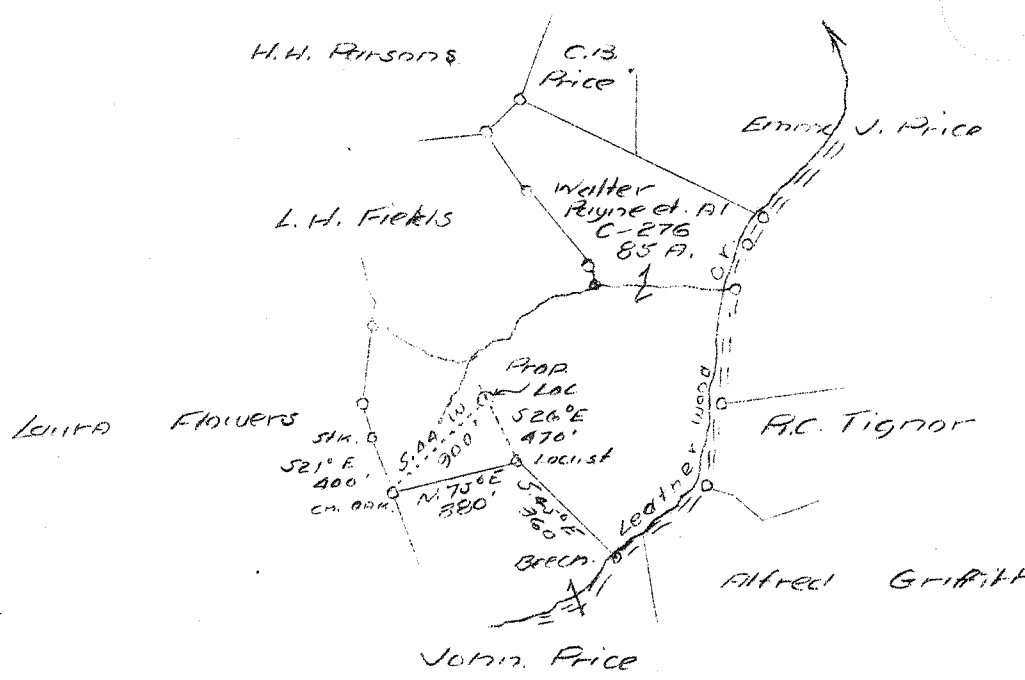


Latitude 38° 35'

Longitude 81° 36'



ABP
6/52

W - 1.5
S - 3.66

0.7 Miles S.W. of Blundon

New Location

Sheet # 3

Company	Columbian Carbon Co.
Address	Box 1240, Charleston, W. Va.
Farm	Walter Payne, et al
Acres	85
Lease No.	C-276
Well (Farm) No.	1
Elevation (SL)	971.9' 939.6-7.5' topo
Quadrangle	Kenna S. E.
County	Kanawha
District	Poca
Engineer	James N. Sell
Eng. Reg. No.	772
Date	Sept. 19, 1939
Scale	1" = 1320'

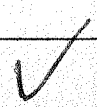
STATE OF WEST VIRGINIA
 Department of Mines
 OIL & GAS DIVISION
 Charleston

WELL LOCATION MAP

File No. Kan. 665

x Denotes location of well on U. S. Topographic Maps, scale 1 to 62,500, latitude and longitude lines being represented by border lines as shown.

- Denotes one inch spaces on border line of original tracing.



WEST VIRGINIA DEPARTMENT OF MINES
OIL & GAS DIVISION
W E L L R E C O R D

Permit No. Ken-665
Keana Quad.

Gas Well

CASING & TUBING

Company	Columbian Carbon Co.	14	38-4	38-4
Address	Box 1240, Charleston, W. Va.	10-3/4	507-11	called
Farm	Walter Payne ACRES 85	8-5/8	1700-4	1700-4
Location	Leatherwood Creek	7	5050-11	5050-11
Well No.	1 (GW-439) ELEV. 939.6 DF	2-3/8	5222-5	5222-5
District	Foca - Kanawha County	5" 13#	98-4	98-4
Surface & Mineral	Walter Payne, et al	No packer		
Address	Blandon R2, Elkview, W. Va.			
Commenced	10/11/39 - completed 2/10/40			
Shot	2/11/40 - Depth 5143-88			
Volume	539 C. F.			
Rock Pressure	720 lbs. 15 hrs.			
Salt Water	1255- hole full			
	1762 1-8" blr. per hr.			

Clay	0	50
Sand	50	70
Slate	70	135
Red Rock	135	145
Slate	145	165
Red Rock	165	200
Slate	200	210
Red Rock	210	225
Slate	225	320
Red Rock	320	400
Sand	400	580
Slate	580	605
Sand	605	695
Slate	695	775
Sand	775	870
Slate	870	915
Sand	915	970
Slate	970	1075
Slate&Shells	1075	1135
Sand	1135	1155
Slate	1155	1165
Salt Sand	1165	1205
Slate	1205	1225
Sand	1225	1630 HW 1255
Slate	1630	1640 Gas 1712
		small sh.
Little Lime	1641	1648 DLM-1654 HSLM
Big Lime	HSLM 1654	1815 W 1762
Big Injun	1815	1830 Sh.G 1762
Slate	1830	1881 Sh.G 1865
Lime Shell	1881	1895
Slate	1895	2180
Lime Shell	2180	2190
Slate	2190	3455
Brown Shale	3455	3520
Slate	3520	3765
Brown Shale	3765	3900
Slate	3900	3930
Brown Shale	3930	4090
Slate	4090	4610
Brown Shale	4610	4660
Slate	4660	4695
Brown Shale	4695	4905
White Slate	4905	4937

Dark Shale	4937	5008 HSLM
Corniferous L	HSLM 5008*	5118 SLM
Oriskany Sand	SLM*5118	5159
Lincy Sand	*5159	5167
Sandy Lime	*5167	5172
Oriskany Sand	*5172	5197
Lime - 4	*5197	5203 SLM
Total Depth		5203

*Also per sample examination

PAYS: 5143-47; 5165-67;
5172-75; 5186-88

CEMENT RECORD: 11/13/39 cemented 8-5/8 casing. Ran 83 sacks Alpha Cement mixed with 1% Aquagol. Ran 4 sacks Aquagol ahead of cement. Plug on top Aquagol. Ran 10' spacer. Ran plug on top cement. 14' solid cement in pipe.

Dallas Holley, Cementer - Halliburton Oil Well Cementing Company.

1/20/40 cemented 7" casing. Ran 25 sacks Alpha cement. Ran 10' spacer. Ran plug on top and bottom cement. 11' solid cement in pipe.

Dick Allen, Cementer
Halliburton Oil Well Cementing Co.