

New Location   
Drill Deeper   
Abandonment  3/29/76

0.7 MILES S.E. OF BLUNDON  
B-18  
P-19

Company CITIES SERVICE OIL CO.

Address BOX 873 - CHARLESTON - W.VA.

Farm W. S. JONES ET AL

Tract \_\_\_\_\_ Acres 106 Lease No. C-279  
C-283

Well (Farm) No. 1 Serial No. \_\_\_\_\_

Elevation (Spirit Level) 1031.3

Quadrangle KENNA - (S.E.)

County KANAWHA District POCA

Engineer James N. Sell

Engineer's Registration No. 772

File No. \_\_\_\_\_ Drawing No. \_\_\_\_\_

Date SEPT. 19, 1939 Scale 1" = 1320'

STATE OF WEST VIRGINIA  
DEPARTMENT OF MINES  
OIL AND GAS DIVISION  
CHARLESTON

**WELL LOCATION MAP**  
FILE NO. KAN-666-P

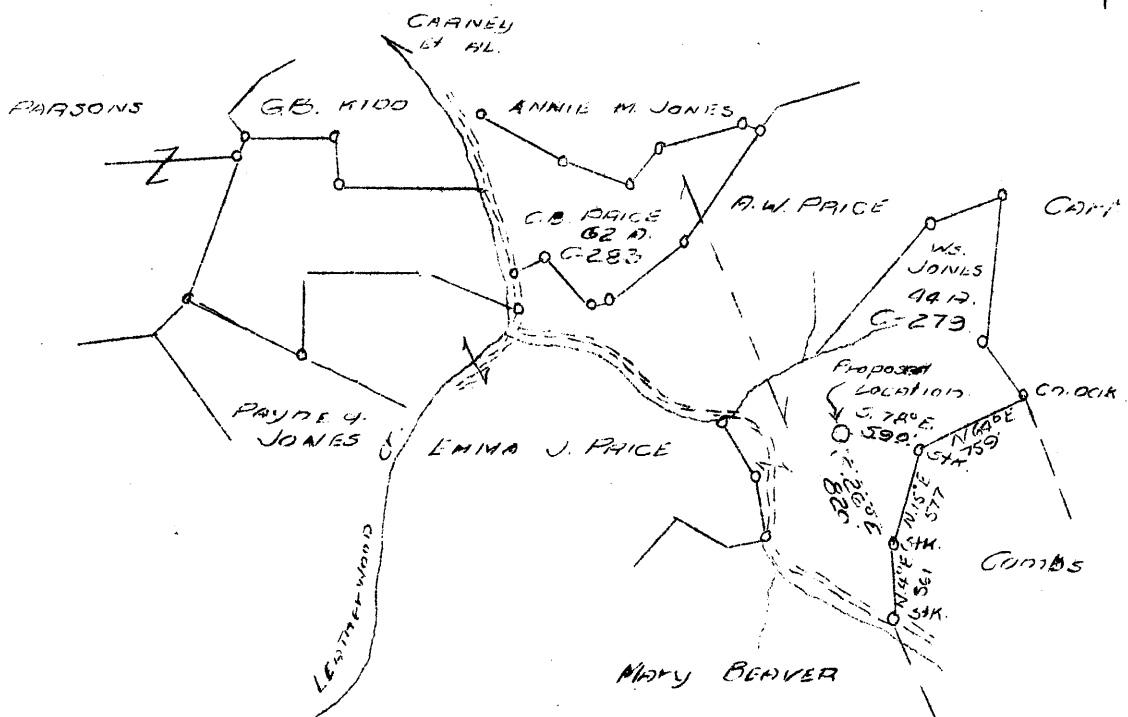
+ Denotes location of well on United States Topographic Maps, scale 1 to 62,500, latitude and longitude lines being represented by border lines as shown.

- Denotes one inch spaces on border line of original tracing.

**47-039**

Latitude 38° 25'

Longitude 81° 30'



W - .55  
S - 3.44

0.7 Miles S.E. of Blundon

New Location

Sheet # 3

Company	Columbian Carbon Company
Address	B-1240, Charleston, W. Va.
Farm	W. S. Jones, et al
Acres	106
Lease No.	C-279 & C-283
Well (Farm) No.	1
Elevation (SL)	1031.3
Quadrangle	Kenna S. E.
County	Kanawha
District	Poca
Engineer	James N. Sell
Eng. Reg. No.	772
Date	Sept. 19, 1939
Scale	1" - 1320'

STATE OF WEST VIRGINIA  
Department of Mines  
OIL & GAS DIVISION  
Charleston

WELL LOCATION MAP

File No. Kan. 666-D

x Denotes location of well on U. S. Topographic Maps, scale 1 to 62,500, latitude and longitude lines being represented by border lines as shown.

- Denotes one inch spaces on border line of original tracing.

Handwritten marks at the bottom of the page, including a large 'V' and some scribbles.

WEST VIRGINIA DEPARTMENT OF MINES  
OIL & GAS DIVISION  
WELL RECORD

Permit No. Kan-668  
Kenna Quad.

Gas Well

**POCA DIST.**

Company      Columbian Carbon Co.  
Address      Box 1240, Charleston, W. Va.  
Farm          W. S. Jones, et al ACRES 106  
Location      Leatherwood Creek  
Well No.      1 (GW-440)   ELEV. 1036.9 DF  
District      Poca - Kanawha County  
Surface & Mineral   W. S. Jones, et al, 209 Mary St.,  
                  Charleston, W. Va. (Contact  
                  Columbian Carbon Co. for addresses)  
  
Commenced    Oct. 25, 1939  
Completed    Dec. 31, 1939  
Shot          Not shot  
Volume        355,000 c.f.  
Rock Pressure   180 lbs. 20 hrs.  
Fresh Water   240' - 1/13" blr. pr. hr.  
              1410 1/10" " " "  
Salt Water    HFW 1505

CASING & TUBING

14	21	21
10-3/4	571-11	571-11
8-5/8	1840-1	1840-1

Sand	0	80	
Slate	80	125	
Red Rock	125	135	
Slate	135	175	
Sand	175	195	
Slate	195	235	
Red Rock	235	370	W 240 - 1-13" blr. per hr.
Slate	370	455	
Red Rock	455	520	
Sand	520	825	
Slate	825	845	
Sand	845	895	
Slate	895	910	
Sand	910	1005	
Slate	1005	1035	
Sand	1035	1075	
Slate	1075	1245	
Salt Sand	1245	1270	
Slate	1270	1325	
Salt Sand	1325	1687	W 1410 1-10" blr. per hr.
Slate	1687	1690	
Black Lime	1690	1710	W 1505 hole full
Maxton Sand	1710	1750	
Little Lime	1750	1780	SLM
Big Lime	SLM 1780	1950	
Big Injun Sand	1950	1995	
Black Lime	1995	2035	
Slate	2035	2875	
White Slate	2875	3539	
Total Depth	3539		Pays: 1893; 1935 3400

**CEMENT RECORD:** 11/30/39 Cemented 8-5/8 Casing. Ran 71 Sacks Alpha Cement mixed with 1% Aquagel. Ran 5 Sacks Aquagel ahead of cement. 10' spacer. Plug on top Aquagel. Plug on top Cement. Casing west back to bottom. 11' cement in hole. Dick Allen, Cementer, - Halliburton Oil Well Cementing Company.

WEST VIRGINIA DEPARTMENT OF MINES  
OIL & GAS DIVISION  
W E L L R E C O R D

Permit No. Kan-666-D  
Kenna Quad.

(Old Well Drilled Deeper)

Gas Well

		<u>CASING &amp; TUBING</u>		
Company	Columbian Carbon Co.	10-3/4	571-11	pulled
Address	Box 1240, Charleston, W. Va.	7	5206-5	5206-5
Farm	W. S. Jones, et al ACRES 106	2-3/8	5376-5	5376-5
Location	Leatherwood Creek	5	69-10	69-10
Well No. 1	(G7-440) ELEV. 1036.9 DF			
District	Poca - Kanawha County			No packer
Surface & Mineral Address	W. S. Jones, et al, 209 Mary St., Charleston, W. Va. or contact Columbian Carbon Co.			
Commenced Deepening	Jan. 13, 1940			
Completed Deepening	March 4, 1940			
Shot	3/4/40 - Depth 5299-5314 SLM			
Volume	3,085,000 c.f.			
Rock Pressure	950 lbs. 16 hrs.			
Water	-			

White Slate	2875	
Old Total Depth in White Slate		3539

DEEPEMED RECORD

White Slate	3539	4078	
Brown Shale	4078	4180	
White Slate	4180	4780	
Brown Slate	4780	5053	
White Slate	5053	5105	
Brown Slate	5105	5163	SLM
Corniferous Lime	SLM 5163	5282	
Oriskany	*5282	5327	
Black Lime	5327	5340	Deepened Pay: 5300-5310
Oriskany Sand	5340	5357	
Black Lime -	5357	5381	SLM
Total Depth		5381	SLM

\*Also per sample examination

**CEMENT RECORD:** Cemented 7" Casing. Ran 10  
Sacks Alpha Cement. - dumped on  
bottom. Casing picked up and  
2/19/40 set down in cement. 33' of  
cement left in pipe when started  
up. Cemented by Ben Simonton