

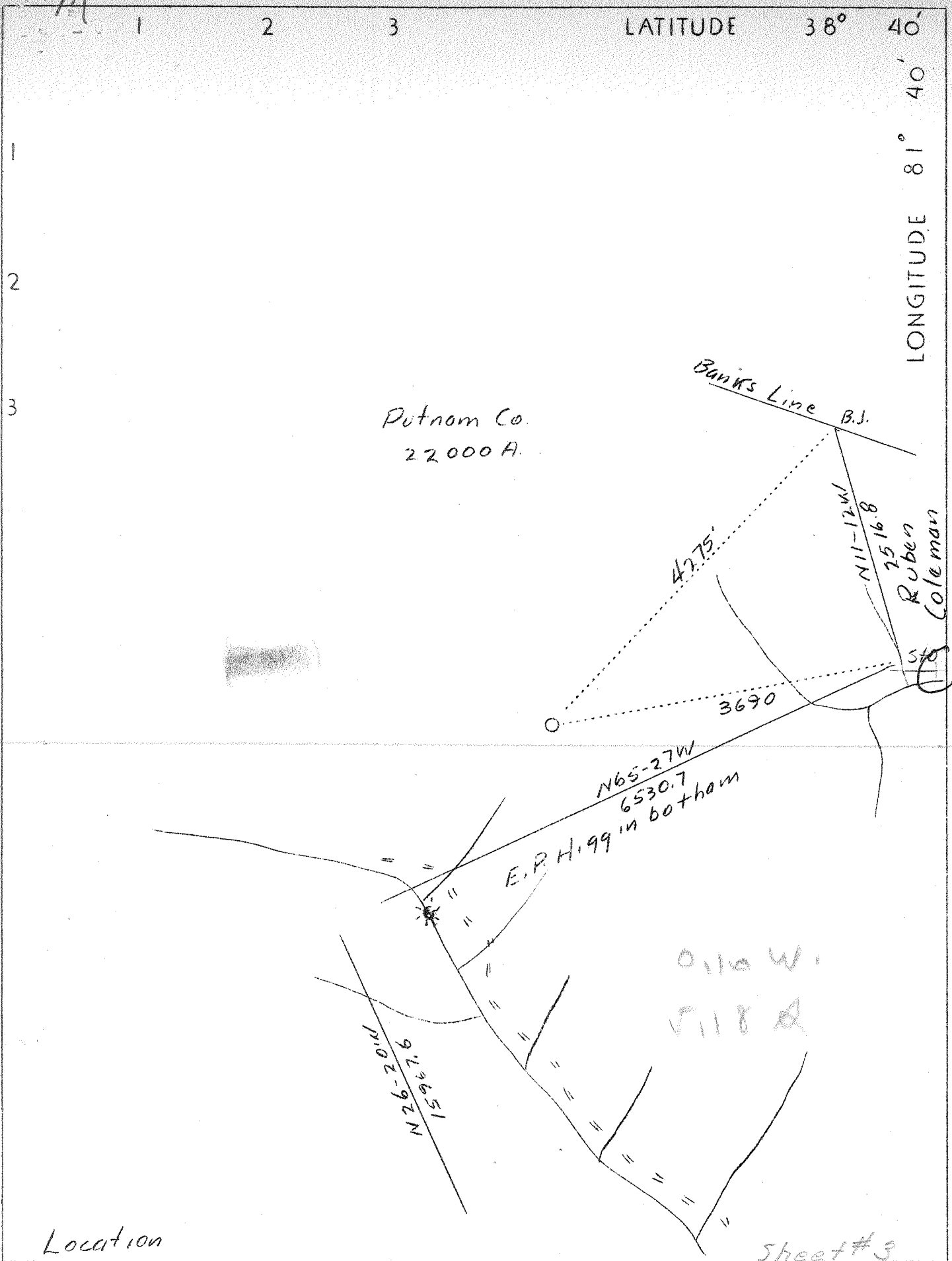
New Location
 Drill Deeper
 Abandonment
 Date 9-10-69

Company Labor Corporation (Godfrey L. Cabot Inc)
 Address 600 Union Bldg. Charleston WVa
 Farm The Putnam Co
 Tract _____ Acres 22,000 Lease No. 4-464
 Well (Farm) No. 4 Serial No. 936
 Elevation (Spirit Level) 970.5 (Ground)
 Quadrangle Kenna WC
 County Marion District Poca
 Engineer [Signature]
 Engineer's Registration No. 806
 File No. _____ Drawing No. _____
 Date Oct 4 1939 Scale 1" = 1320'

STATE OF WEST VIRGINIA
 DEPARTMENT OF MINES
 OIL AND GAS DIVISION
 CHARLESTON

WELL LOCATION MAP
 FILE NO. KAN-668-P

+ Denotes location of well on United States Topographic Maps, scale 1 to 62,500, latitude and longitude lines being represented by border lines as shown.
 - Denotes one inch spaces on border line of original tracing.



Location

Company	Godfrey L. Cabot, Inc.
Address	600 Union Bldg., Charleston, W. Va.
Farm	The Putnam Company
Acres	22,000
Lease No.	4-464
Well (Farm) No.	4
Serial No.	936
Elevation (SL)	970.5 - ground
Quadrangle	Kenna W.
County	Kanawha
District	Poca
Engineer	Fritz Randolph
Eng. Reg. No.	806
Date	Oct. 4, 1939
Scale	1" - 1320'

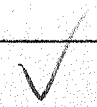
STATE OF WEST VIRGINIA
 Department of Mines
 OIL & GAS DIVISION
 Charleston

WELL LOCATION MAP

File No. KAN-668

x Denotes location of well on U. S. Topographic Maps, scale 1 to 62,500, latitude and longitude lines being represented by border lines as shown.

- Denotes one inch spaces on border line of original tracing.



WEST VIRGINIA DEPARTMENT OF MINES
OIL & GAS DIVISION
W E L L R E C O R D

Permit No. Kan-668
Kenna Quad.

Gas Well

		CASING & TUBING
Company	Godfrey L. Cabot, Inc.,	18 861 861
Address	Charleston, W. Va.	10 1981
Farm	Putnam Company	8 25.55# 318
Well No.	4 SERIAL 936 ELEV. 970.5	8 24# 1858
District	Poca - Kanawha County	7 24# 5109 5109
Surface & Mineral	-	2 4# 5212 5212
Commenced	Feb. 5, 1940 -	
Completed	May 25, 1940	
Shot	Well not shot	
Open Flow	60/10ths Merc. in 6-5/8	
Volume	12,276,000 c.f. Back Press. 3-1/2#	
Rock Pressure	1680 lbs. in 48 hrs. - Oriskany	
Fresh Water	1020 - 1/4 bailer per. hr.	
" "	75 - 1/4 bailer per hr.	
Salt Water	1602 - 2 bailers per hr.	
" "	1640 - hole full	

Surface	0	75		Big Lime	1971	2115
Sand	75	97		Injun Sand	2115	2150 HFW 1640
Slate	97	117		Slate	2150	2153
Red Rock	117	133		Lime	2153	2305
Slate	133	140		Slate&Shell	2305	2551
Red Rock	140	151		Brown Shale	2551	2555
Slate & Shell	151	182		Berea Sand	2555	2573
Red Rock	182	195		Slate & Shell	2573	4048
Slate	195	207		Shale Shells	4048	4140
Sand	207	220		Brown Shale	4140	4353
Red Rock	220	262		Slate	4353	4775
Slate	262	270		Shale	4775	5005
Lime	270	296		Black Shale	5005	5088 SL
Red Rock	296	380		Corniferous Lime	5088	5185
Lime Shells	380	470		Oriskany Sand	5185	5212 SL
Slate & Shell	470	539				
Sand	539	546				
Slate	546	567				
Red Rock	567	619				
Sand	619	623				
Red Rock	623	634				
Lime	634	670				
Red Rock	670	710				
Slate & Shell	710	755				
Sand	755	765				
Slate	765	797				
Sand	797	818				
Slate & Shell	818	831				
Red Rock	831	856				
Lime	856	865				
Sand	865	929				
Slate	929	936				
Pink Rock	936	943				
Sand	943	952				
Slate	952	970				
Sand	970	1020				
Slate & Shell	1020	1038				
Sand	1038	1088				
Slate	1088	1136				
Sand	1136	1162				
Slate	1162	1214				
Sand	1214	1266				
Slate	1266	1361				
Sand	1361	1372				
Slate & Shell	1372	1593				
Salt Sand	1593	1971	Sh. Oil 1606			

Gauges in Oriskany Sand

370 M	at	5190'
862 M	"	5190
1724 M	"	5193
2439 M	"	5196
2439 M	"	5197
10320 M	"	5202
8100 M	"	5202
9900 M	"	5203
11370 M	"	5206
12276 M	"	5207
11199 M	"	5209
12020 M	"	5209
11909 M	"	5211
11909 M	"	5212