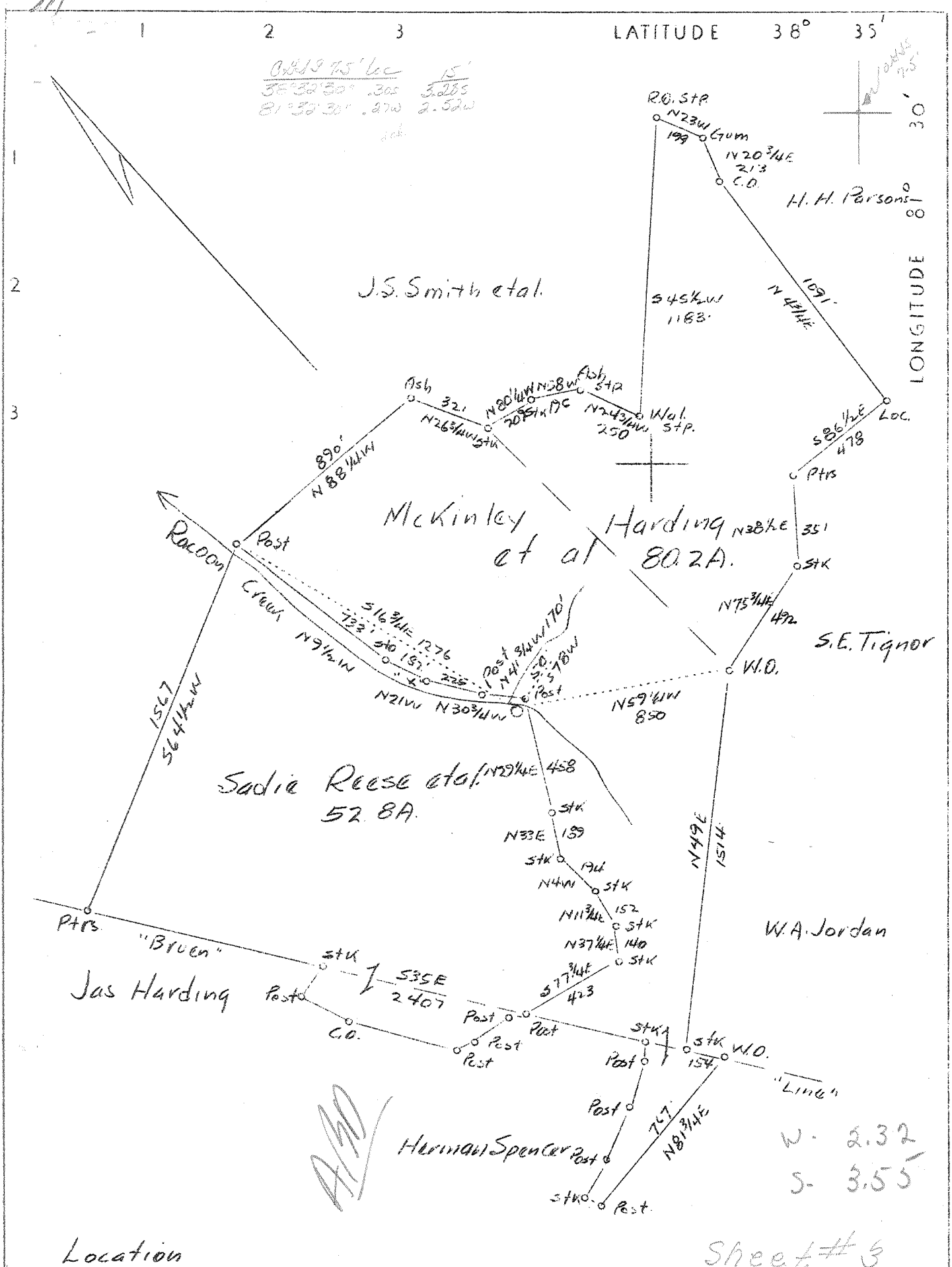


LATITUDE 38° 35'

LONGITUDE 80° 30'

$\frac{0.001975' \text{ loc}}{35' 32' 30'' \cdot 305 \quad 3.0885}$
 $\frac{15'}{81' 35' 30'' \cdot 270 \quad 2.520}$



Location

Sheet # 3

Company	Spartan Gas Company
Address	Kanawha Valley Bldg., Charleston, W. Va.
Farm	Sadie Reese, et al
Acres	133.0
Well (Farm) No.	1
Serial No.	S-13
Elevation (SL)	910.0
Quadrangle	Kenna S. E
County	Kanawha
District	Poca
Engineer	Robert S. Hyde
Eng. Reg. No.	646
Date	Oct. 6, 1939
Scale	1" - 500'

STATE OF WEST VIRGINIA
 Department of Mines
 OIL & GAS DIVISION
 Charleston

WELL LOCATION MAP

File No. KAN-669

x Denotes location of well on U. S. Topographic Maps, scale 1 to 62,500, latitude and longitude lines being represented by border lines as shown.

- Denotes one inch spaces on border line of original tracing.

DEPT. OF MINES STATE OF WEST VIRGINIA

STATE OF WEST VIRGINIA
DEPARTMENT OF MINES
OIL AND GAS DIVISION

856

WELL RECORD

Permit No. KAN-669

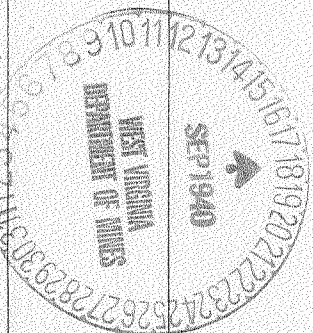
Oil or Gas Well Gas
(Kind)

Company KANK SPARTAN GAS COMPANY
Address 518 Kanawha Valley Building
Farm SADIE REESE Acres 139
Location (waters) Coon Creek
Well No. One (1) Elev. 912
District Poca County Kanawha
The surface of tract is owned in fee by Sadie Reese, et al
Mineral rights are owned by Sadie Reese, et al
Drilling commenced 10/19/39
Drilling completed 6/20/40
Date shot 6/20/40, 50 Qts. Depth of shot 5052-5077
Open Flow 2 1/10ths Water in 6-5/8" (21#) Inch

Casing and Tubing	Used in Drilling	Left in Well	Packers
Size			
16			Kind of Packer
18 1/4"	49' 2"		
10-3/4"	510' 6"	210'	Size of
2 1/4 8-5/8"	1832' 0"		
6 5/8" (26#)	4997' 1"		Depth set
5 3/16"			
3			Perf. top
2	5098' 7"		Perf. bottom
Liners Used			Perf. top
			Perf. bottom

Volume 1,770,000 Cu. Ft. CASING CEMENTED 6-5/8" SIZE No. Ft. 5/26/40 Date
Rock Pressure 775# lbs 60 hrs. 25 sacks cement
Oil COAL WAS ENCOUNTERED AT FEET INCHES
Fresh water feet feet FEET INCHES FEET INCHES
Salt water feet feet FEET INCHES FEET INCHES

Formation	Color	Hard or Soft	Top	Bottom	Oil, Gas or Water	Depth Found	Remarks
Surface			0	45			
Sand			45	63			
Red Rock			63	80			
Sand			80	124			
Blue Slate			124	155			
Red Rock			155	220			
Sand			220	280			
Red Rock			280	325			
Slate			325	375			
Sand			375	390			
Slate			390	475			
Sand			475	510			
Slate			510	525			
Sand			525	600			
Slate			600	625			
Sand			625	675			
Slate Dark			675	765			
Sand			765	820			
Blue Slate			820	984			
Slate & Shells			984	1050			
Hard Sand			1050	1095			
Slate			1095	1153			
Salt Sand			1153	1440	Water-1163		
Slate			1440	1453			
Sand			1453	1588			
Blue Slate			1588	1600			
L.Lime			1600	1618			
Pencil Cave			1618	1625			
Big Lime			1625	1755			
Big Injun			1755	1781			
Sl.&Shells			1781	2177	Sh. Gas-2085		
Berea Sand			2177	2183	Gas-2178	(492,000)	
Sl.&Shells			2183	3752			
Brown Shale			3752	4075			
Wh.Slate			4075	4590			
Brown Shale			4590	4860			
Wh.Slate			4860	4898			
Brown Shale			4898	4927			
Black Shale			4927	4931			
Cornif.Lime			4931	5041			
Orisk.Sand			5041	5086			
Lime			5086	5101	Sand-5101-5118 1/2		
TOTAL DEPTH				5118 1/2			SLM @ 1819 and 4951, Casing Pts.



4931
2183
2748
5044
912
413 2

