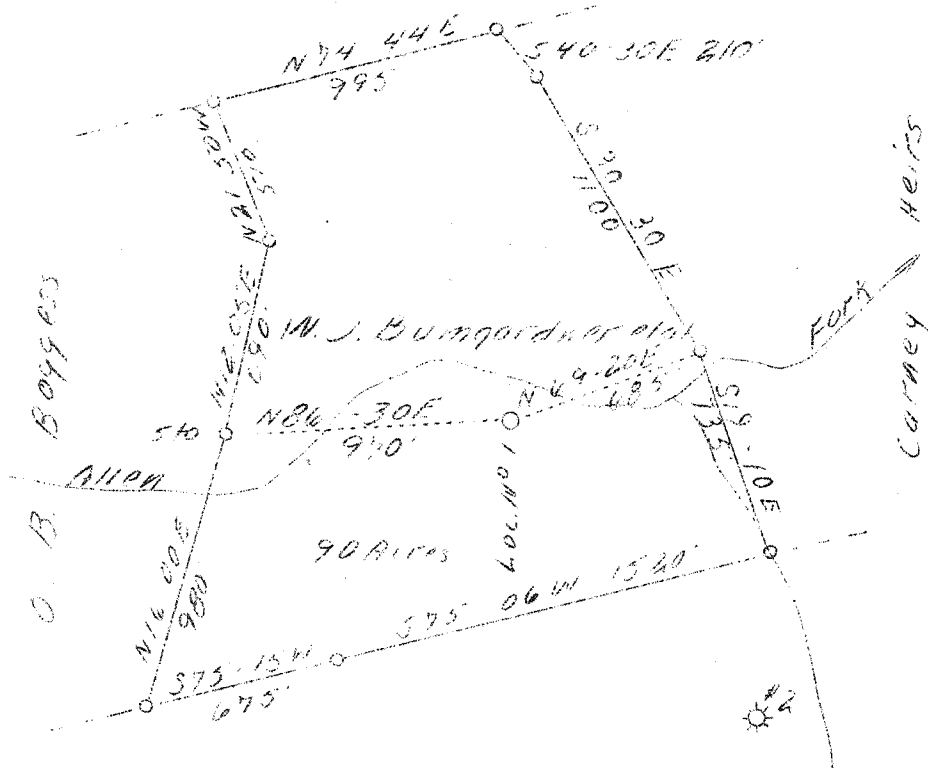


LATITUDE 38°35'

LONGITUDE 81°40'

Putnam Co.



PUTNAM CO

W - 13

S - 1.45'

*ABD*  
*8/47*

*New location*

Company	United Carbon Co.	STATE OF WEST VIRGINIA
Address	Charleston, W. Va.	Department of Mines
Farm	W. J. Bungardner, et al	OIL & GAS DIVISION
Acres	90	Charleston
Lease No.	2449	WELL LOCATION MAP
Well (Farm) No.	1	File No. <i>WON 670</i>
Serial No.	815	
Elevation (SL)	-	
Quadrangle	Kenna	
County	Kanawha	
District	Poca	
Engineer	E. G. Withrow	
Eng. Reg. No.	-	
Date	Oct. 23, 1939	
Scale	1" = 660'	

x Denotes location of well on U. S. Topographic Maps, scale 1 to 62,500, latitude and longitude lines being represented by border lines as shown.

- Denotes one inch spaces on border line of original tracing.



WEST VIRGINIA DEPARTMENT OF MINES  
OIL & GAS DIVISION  
W E L L R E C O R D

Permit No. Kan-670  
Kenna Quad.

Gas Well

Company United Carbon Company  
Address 901 Union Bldg., Charleston, W. Va.  
Farm W. J. Buegardner ACRES 90  
Location Allen's Fork  
Well No. 1 ELEV. 783.8  
District Pocahontas - Kanawha County  
Surface L. E. Long, Sissonville, W. Va.  
Mineral W. J. Buegardner, Sissonville, W. Va.  
Commenced Nov. 6, 1939  
Completed Feb. 26, 1940  
Shot 2/27/40 - Depth 4960-4995  
Open Flow 48/10ths Merc. in 6-5/8  
Volume 9,446,000 c.f.  
Rock Pressure 1620 lbs. 24 hrs.  
Fresh Water 105  
Salt Water 1350

CASTING & MUDING

13	170	28
10-3/4	650	650
8-5/8	1952	1952
6-5/8	4973	4973
2-3/8	4989	4989

Casing Cemented:

696' of 8-5/8		1/7/40
250' of 6-5/8		2/11/40

Clay	0	19	
Sand	19	60	
Rock red	60	75	
Slate	75	90	
Sand	90	105	
Slate	105	150	W 105 7 blrs.
Sand	150	160	
Slate	160	245	
Rock red	245	320	
Slate	320	330	
Sand	330	360	
Rock red	360	400	
Slate	400	485	
Rock red	485	500	
Sand	500	520	
Slate	520	530	
Rock red	530	540	
Slate	540	545	
Sand	545	608	
Slate	608	660	
Lime, gritty	660	675	
Sand	675	710	
Slate	710	755	
Sand	755	790	
Slate	790	885	
Sand	885	960	
Slate	960	1230	
Lime	1230	1260	
Sand, salt	1260	1708	HPW 1350
Big Lime	1708	1869	
Injun Sand	1869	1937	
Lime	1937	2090	
Slate	2090	2320	
Sand, Borea	2320	2345	
Slate, Shell	2345	2650	
Slate	2650	3535	
Shale, brown	3535	3575	
Slate&Shells	3575	3948	
Shale, brown	3948	4090	
Slate	4090	4540	
Shale, brown	4540	4777	

Slate	4777	4800	
Shale, black	4800	4853	
Concretionous Lime	4853	4954	
Oriskany Sand	4954	4993	
Lime	4993	5017	
Sand	5017	5034	
Lime	5034	5036	
Total Depth		5036	

Shot record: 50 qts. glycerine, using  
3" shells.

Filled hole from 5036 to 4995'