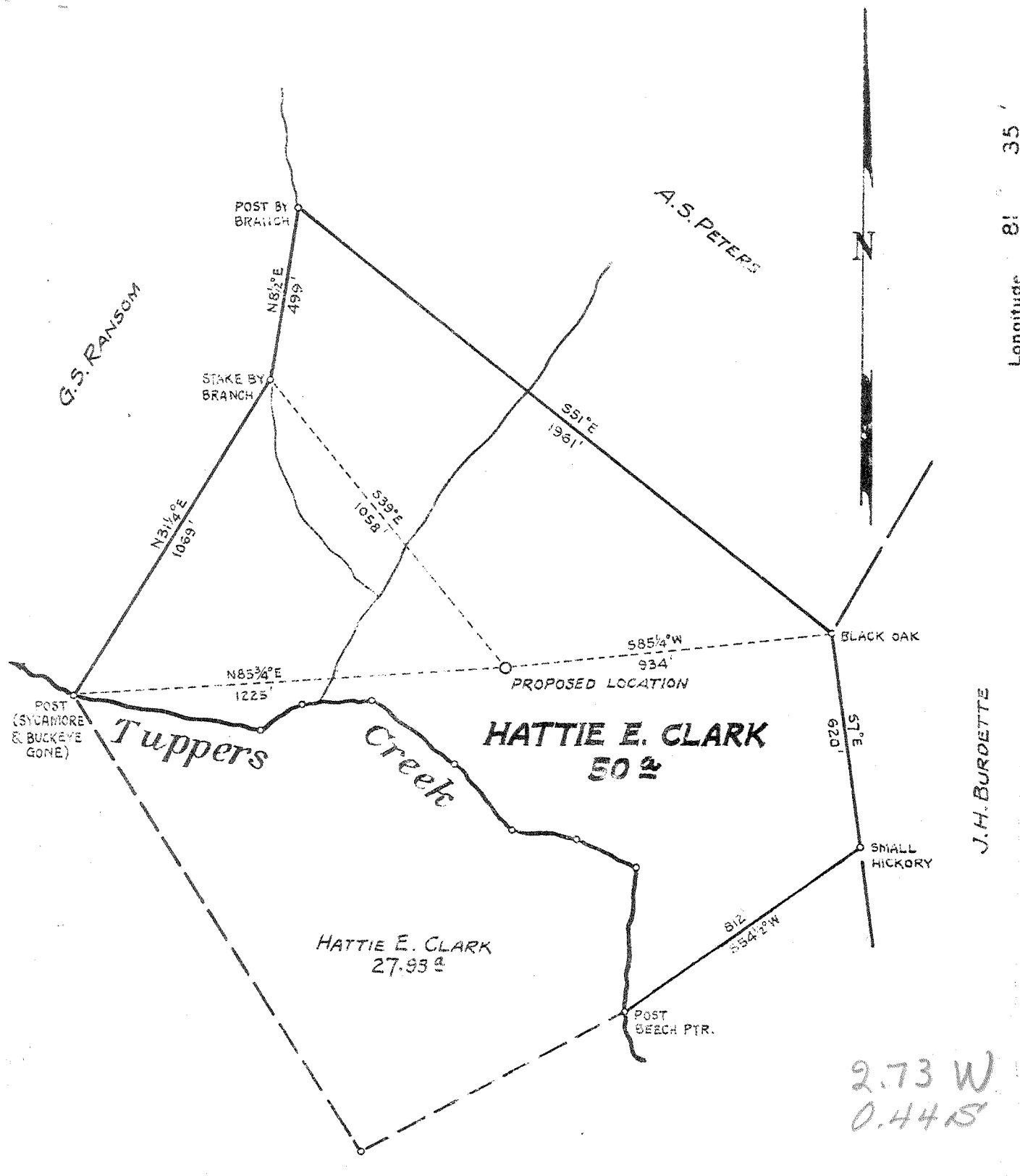


Latitude 38° 30' Longitude 81° 35'



2.73 W
0.44 S

New Location X
Drill Deeper
Abandonment

Company WILLIAM O. ZIEBOLD
 Address KANAWHA VALLEY BLDG, CHARLESTON, W.VA.
 Farm HATTIE E. CLARK
 Tract "D" Acres 50 Lease No. _____
 Well (Farm) No. ONE Serial No. _____
 Elevation (Spirit Level) 696.3
 Quadrangle CHARLESTON N
 County KANAWHA District POCA
 Engineer Robert L. Hyde
 Engineer's Registration No. 646
 File No. _____ Drawing No. _____
 Date FEBRUARY 7, 1940 Scale 1 INCH = 400 FEET

STATE OF WEST VIRGINIA
 DEPARTMENT OF MINES
 OIL AND GAS DIVISION
 CHARLESTON

WELL LOCATION MAP
 FILE NO. KAN-685

+ Denotes location of well on United States Topographic Maps, scale 1 to 62,500, latitude and longitude lines being represented by border lines as shown.

- Denotes one inch spaces on border line of original tracing.

6-6-40 ✓

WEST VIRGINIA DEPARTMENT OF MINES
OIL & GAS DIVISION
W E L L R E C O R D

Permit No. Kan-685
Charleston Quad.

Gas Well

Company Spartan Gas Company
Address 518 Kanawha Valley Bldg.,
Charleston, W. Va.
Farm Hattie E. Clark ACRES 50
Location Tappers Creek
Well No. 1 ELEV. 696.3
District Poca - Kanawha County
Surface & Mineral Hattie E. Clerk, Charleston, W. Va.
Commenced Feb. 23, 1940
Completed May 10, 1940
Shot Not shot
Open Flow 12/10ths Merc. in 7" 22#
Volume 5,512,000 c.f.
Rock Pressure 900 lbs. 14 hrs.
Water -

CASING & TUBING

16	16
13-3/8 48#	130 Pulled
10-3/4 32#	507-7 "
8-5/8 24#	1696-3
7 22#	4718-8
2	4813-6
Perf. Top - 4806	
" bot.- 4811	
7" casing cemented 4/30/40 with 25 sacks cement	

Surface	0	20	
Red Rock	20	60	
Gray Mud	60	80	
Sand	80	90	
Gray Mud	90	120	
Red Rock	120	135	
Blue Slate	135	400	
Sand	400	450	
Slate	450	520	
Sand	520	540	
Slate	540	550	
Sand	550	580	
Sl. & Shells	580	662	
Sand - hard	662	700	
Slate	700	880	
Gas Sand	880	926	
Slate	926	965	
Salt Sand	965	1239	Water @ 1045
Break	1239	1244	
Salt Sand	1244	1260	
Slate	1260	1284	
Sand	1284	1395	
Slate & Shls	1395	1406	
L. Lime	1406	1435	
Pncl. Cave	1435	1440	
Big Lime	1440	1602	
Injun Sand	1602	1647	
Slate&Shls	1647	2070	
Brown Shale	2070	2081	
Berea Sand	2081	2087	
Sl. & Shells	2087	3294	
Brown Shale	3294	3345	
Gray Slate	3345	3740	
Brown Shale	3740	3866	
Wh. Slate	3866	4347	Sh. Gas 4150
Brown Shale	4347	4593	
Wh. Slate	4593	4623	
Brown Shale	4623	4669	Sh. Gas 4660 SLM @ 4685
Cornif. Lime	4669	4775	Casing point
Orisk. Sand	4775	4816	Gas 4780-4790
Total Depth	4816	Gas 4800-4802 1/2	

4669 4775
696 696

3973 4079