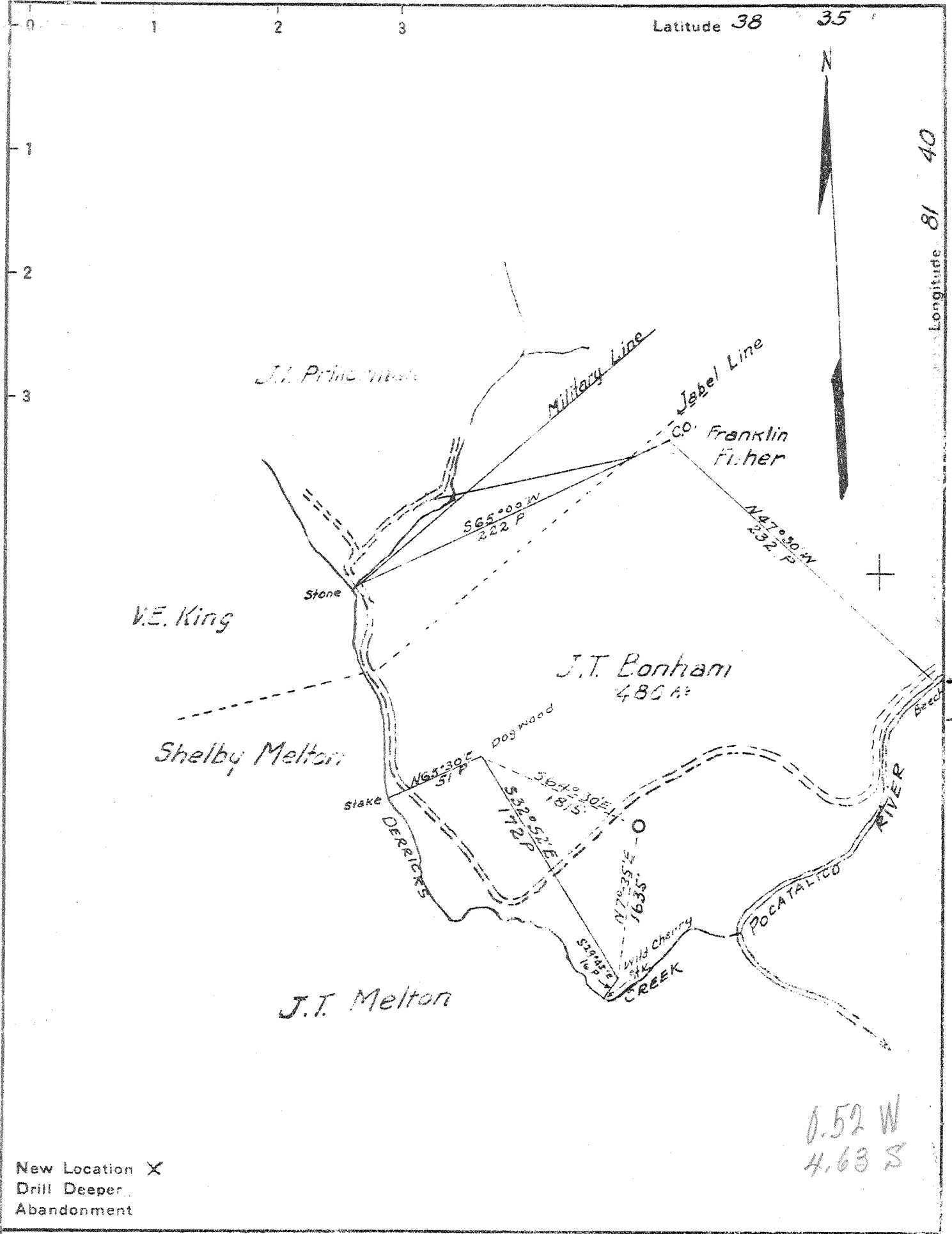


M



0.52 W
4.63 S

New Location X
Drill Deeper
Abandonment

Company GODFREY L. CABOT Inc.
 Address Union Bldg. CHARLESTON W.VA.
 Farm JOHN T. BONHAM
 Tract..... Acres 486 Lease No. 3-522
 Well (Farm) No. 2 Serial No. 937-
 Elevation (Spirit Level) 623.7
 Quadrangle HENNA
 County HANAWHA District POCA
 Engineer D. G. Randolph
 Engineer's Registration No. 806
 File No. Drawing No.
 Date Feb. 26 1940 Scale 1" = 1320'

STATE OF WEST VIRGINIA
 DEPARTMENT OF MINES
 OIL AND GAS DIVISION
 CHARLESTON

WELL LOCATION MAP
 FILE NO. KAN-688 D

+ Denotes location of well on United States Topographic Maps, scale 1 to 62,500, latitude and longitude lines being represented by border lines as shown.

- Denotes one inch spaces on border line of original tracing.



WEST VIRGINIA DEPARTMENT OF MINES
OIL & GAS DIVISION
W E L L R E C O R D

Permit No. Kan-688
Kenna Quad.

Gas Well

		CASING & TUBING
Company	Godfrey L. Cabot, Inc.,	13 309 309
Address	Charleston, W. Va.	Casing shoe 1/2 reg.
Farm	John T. Bonham ACRES -	size, bev.
Well No.	2 - Serial 937 ELEV. 629.23	10 1503 1503
District	Poca - Kanawha County	3 1630 1630
Surface & Mineral	-	
Commenced	March 28, 1940	Packer - Spang B. H.
Completed	May 1, 1940	Size - 10-3/4x16x13-3/8
Volume	3,320,000 c.f. after acidation.	Packer - Hook Wall
Rock Pressure	Big Lime 600# in 30 hrs.	Size - 10 x 3
		Depth set - 1521
		Size Anchor 3" -109'
		Perf. top - 1624
		" bot.- 1629

Red Clay	0	15		
Red Rock	15	65		
Sand	65	68		
Blue Slate	68	80	Fw 73 - 3 bailers per hr.	
Slate & Shells	80	93	FW 95 - hole full	
Sand	93	103		
Blue Slate	103	150	GAUGES IN BIG LIME:	
Red Rock	150	157	4-25-40	100/10 water in 4" at 1540
Blue Slate	157	190	4-27-40	63/10 " " " 1545
Sand	190	210	4-29-40	48/10 " " " 1545 after blowing 5
Red Rock	210	216	4-29-40	56/10 " " " 1548 Tools out hrs. .
Black Slate	216	265	4-30-40	40/10 " " " 1555
Slate	265	278	4-30-40	40/10 " " " 1561
Red Rock	278	288	4-30-40	40/10 " " " 1568
Slate	288	298	4-30-40	34/10 " " " 1575
Sand	298	357	4-30-40	32/10 " " " 1583
Blue Slate	357	370	4-30-40	32/10 " " " 1590
Red Rock	370	380	4-30-40	34/10 " " " 1596
Sand	380	430	4-30-40	34/10 " " " 1603
Slate	430	566	5- 1-40	32/10 " " " 1612
Sand	566	615	5- 1-40	32/10 " " " 1623
Black Slate	615	630	5- 1-40	32/10 " " " 1630
Sand	630	652		
Slate	652	978		
Sand	978	1008		
Lime	1008	1012		
Sand	1012	1021		
Slate	1021	1060		
Salt Sand	1060	1442	Salt Water 1112 - 4 bailers per hr.	
Slate	1442	1459	Salt Water 1275 - hole full	
Little Lime	1459	1480		
White Slate	1480	1483		
Big Lime	1483	1630		
Total Depth		1630	SLM	

ACIDATION RECORD:

Acidized with 3,000 gals. 1,000 1st state - 2,000 gals. 2nd stage

5/20/40 Gauge before 1st state - 848 M. Gauge 1 hr., 20 mins. after cleaning 1,968M

Well shut in over night.

5/21/40 Gauge 3 hr. 15 mins. after cleaning, 2nd state - 2,300 M

Well shut in over night

5/22/40 Gauge 1 hr. after head blown off - 3,320 M

Final open flow - 3,320 M

WEST VIRGINIA DEPARTMENT OF MINES
OIL & GAS DIVISION
W E L L R E C O R D

Permit No. Kan 688 D
Kenna Quad.

Gas Well
CASING & TUBING

Company	Godfrey L. Cabot, Inc.			
Address	Charleston, W.Va.	10 $\frac{3}{4}$	35.75	1502 1502
Farm	J.T. Bonham Acres	8	5/8 24#	1783 1783
Well No.	2--serial 937 Elev. 629	7	24#	4648 4648
Location				
District	Poca Kanawha County	10 $\frac{3}{4}$	x 13 3/8 x 16" Packer	
Commenced	Jan. 28, 1950	8	5/8 x 10 x 16 BHPacker	
Completed	April 27, 1950	7"	x 8 5/8 x 15 Spang B.H.	
Open flow	A.S. and cleaned out 24/10ths W in ?			Packer 24507
Volume	207 MCF			
Rock Pressure	363 lbs. 42 hrs. Oriskany			PRODUCING SAND RECORD
Water	1673 25 gals. per hr.;			33 MCF Oriskany
Date shot	120 qts. 4730 to 4762 4-28-50			4730-4762
	B.S. 33; 60 Min. A.S. 202 MCF			

DRILLED DEEFER

Well deepend from 1685

Injun	1661	1664
Black Sand	1664	1673
Sand White	1673	1744
Slate	1744	1774
Lime	1774	1825
Slate & Shell	1825	2095
Brown Shale	2095	2115
Berea	2115	2136
Slate & Shell	2136	3340
Brown Shale	3340	3442
Slate & Shell	3442	3616
Brown Shale	3616	3668
Slate & Shell	3668	3765
Brown Shale	3765	3938
Slate	3938	4355
Brown Shale	4355	4637
Corniferous Lime	4637	4730
Oriskany Sand	4730	4775
Lime	4775	4785
Sand	4785	4797
Lime	4797	4797
T.D.		4797
SLM	1807; 4659; 4733	

Oil and Gas 1661-1664 Show
Gas 2115-2116 Not enough to gauge
Gas 4730 25 MCF
Gas 4738-4737 39 MCF