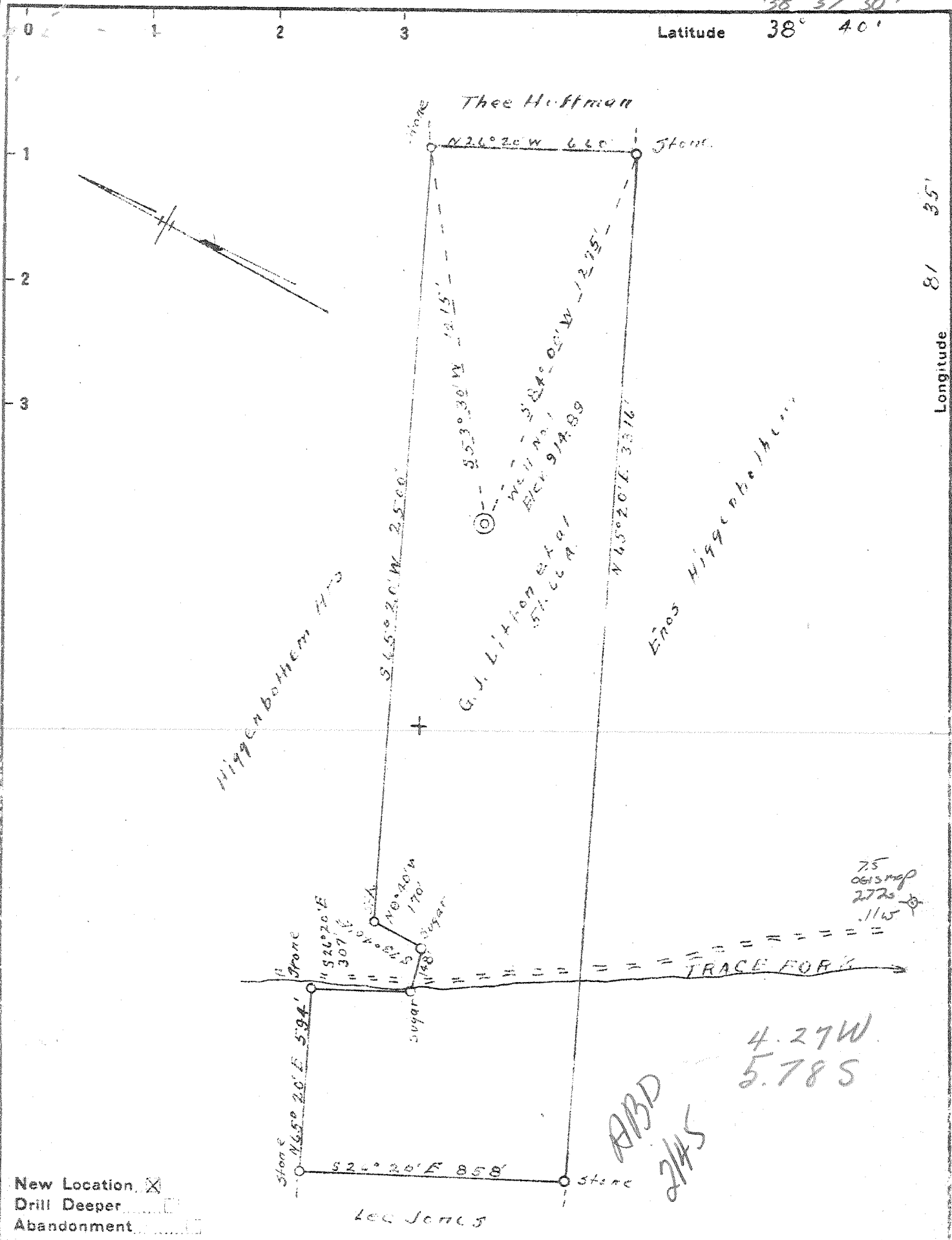


38° 37' 30"

Latitude 38° 40'



Longitude 81° 35'

75
0615 map
2725
.1165

4.27W
5.78S

ABD
2/4/5

New Location
 Drill Deeper
 Abandonment

See Series 5

Company Everett Starsher et al
 Address Spencer, W. Va.
 Farm G. J. Litton et al
 Tract 51.66 Acres Lease No. _____
 Well (Farm) No. 1 Serial No. _____
 Elevation (Spirit Level) 914.89
 Quadrangle Kenna
 County Kanawha District Poca
 Engineer L. J. Dye
 Engineer's Registration No. 804
 File No. _____ Drawing No. _____
 Date Apr. 29, 1946 Scale 1" = 400'

STATE OF WEST VIRGINIA
 DEPARTMENT OF MINES
 OIL AND GAS DIVISION
 CHARLESTON

WELL LOCATION MAP
 FILE NO. KAN-706

+ Denotes location of well on United States Topographic Maps, scale 1 to 62,500, latitude and longitude lines being represented by border lines as shown.
 - Denotes one inch spaces on border line of original tracing.

WEST VIRGINIA DEPARTMENT OF MINES
OIL & GAS DIVISION
W E L L R E C O R D

Permit No. Kan-706
Kenna Quad.

Gas Well

		CASING & TUBING		
Company	Everett Starcher, et al	13	37	37
Address	Spencer, W. Va.	10	896	
Farm	G. F. Litton, et al ACRES 51.66	8-1/4	2128	2128
Location	Trace Fork of Allen Fork	5-3/16	5053	5053
Well No.	1 ELEV. 914.89			
District	Poca - Kanawha County	5053' of 5-1/2 casing		
Surface & Mineral	G. J. Litton, et al, Charleston, W. Va.	cemented.		
Commenced	June 1, 1940			
Completed	August 17, 1940			
Shot	Not shot			
Volume	14,000,000 c.f.			
Rock Pressure	1650 lbs. 24 hrs.			
Water	-			

Red Rock	0	60	Lime	3720	3750
Sand	60	70	Brown Shale	3750	3806
Red Rock	70	90	Slate & Shells	3806	4168
Slate	90	120	Brown Shale	4168	4360
Lime	120	140	White Slate	4360	4750
Slate	140	200	Brown Shale	4750	4990
Red Rock	200	215	Black Shale	4990	5030
Lime	215	235	Corniferous	5030	5140
Slate	235	300	Oriskany sand	5140	5173½
Red Rock	300	325			
Slate & Shells	325	420			
Lime	420	445			
Red Rock	445	454			
Gritty Lime	454	470			
White Slate	470	525			
Red Rock	525	592			
Slate	592	610			
Red Rock	610	662			
Slate & Shells	662	744			
Gritty Lime	744	752			
Slate	752	760			
Sand	760	792			
Slate	792	802			
Sand	802	848			
Black Slate	848	890			
Sand	890	968			
White Slate	968	982			
Sand	982	1050			
Black Slate	1050	1121			
Sand	1121	1187			
Black Slate	1187	1220			
Gritty Lime	1220	1232			
Black Slate	1232	1325			
Lime	1325	1367			
Black Slate	1367	1464			
Gritty lime	1464	1505			
Black Slate	1505	1541			
Sand	1541	1921			
Limo	1921	1936			
Slate	1936	1938			
Big Limo	1938	2037			
Slate	2037	2041			
Injun Sand	2041	2067			
Slate & Shells	2067	3720			