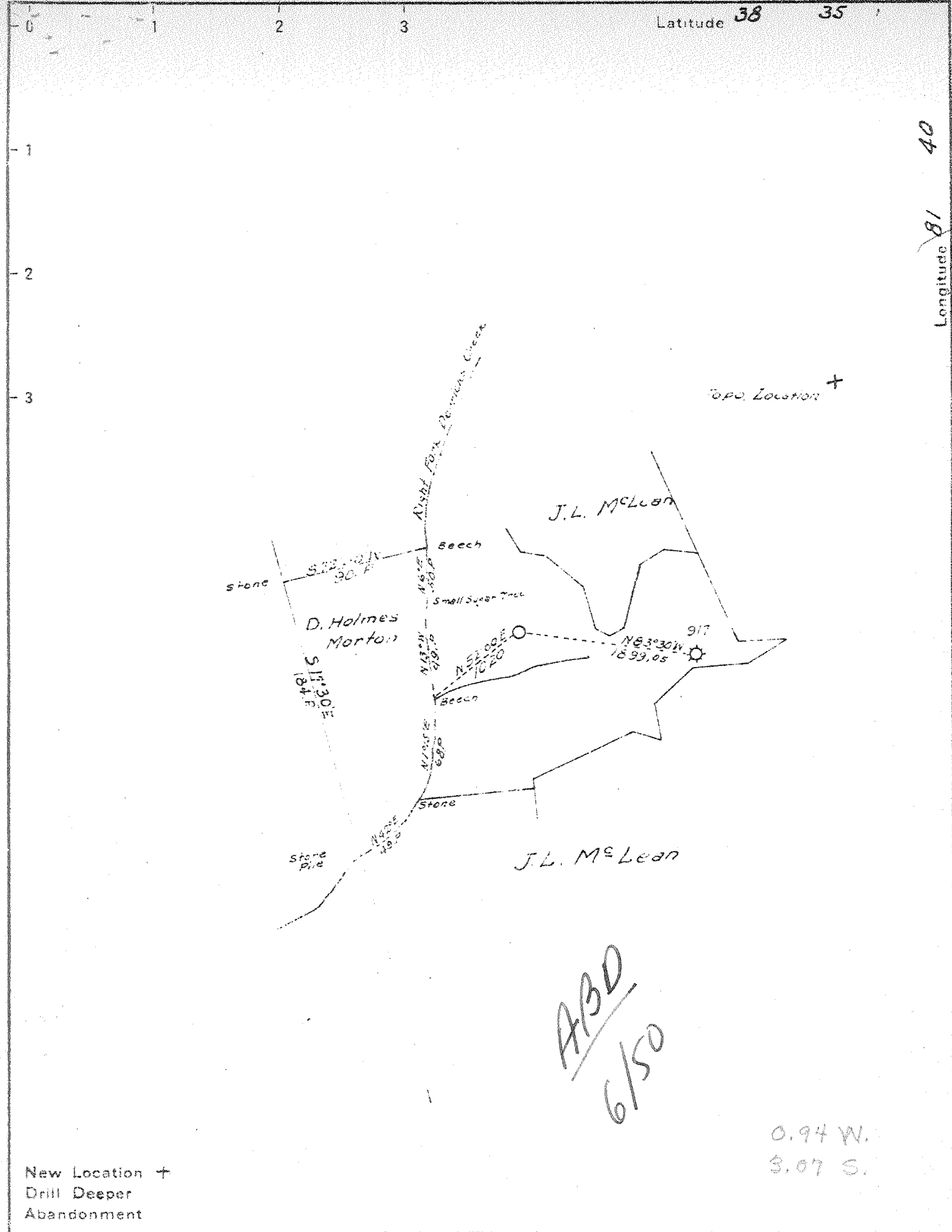


MA



ABD
6/50

0.94 W.
3.07 S.

New Location +
Drill Deeper
Abandonment

Company GODFREY L. CABOT INC.
 Address 600 UNION BLDG. CHARLESTON WVA.
 Farm POCA COAL & LAND CO.
 Tract PART OF 4850 AC. Acres Lease No. 3-466
 Well (Farm) No. 2 Serial No. 351
 Elevation (Spirit Level) 863.97
 Quadrangle KENNA
 County KANAWHA District POCA
 Engineer Charles E. Sturm
 Engineer's Registration No. 975
 File No. Drawing No.
 Date MAY 23, 1940 Scale 1" = 1320'

STATE OF WEST VIRGINIA
 DEPARTMENT OF MINES
 OIL AND GAS DIVISION
 CHARLESTON

WELL LOCATION MAP
 FILE NO. KAN-713

+ Denotes location of well on United States Topographic Maps, scale 1 to 62,500, latitude and longitude lines being represented by border lines as shown.

- O notes one inch spaces on border line of original tracing.

✓

WEST VIRGINIA DEPARTMENT OF MINES
OIL & GAS DIVISION
W E L L R E C O R D

Permit No. Kan-713
Kanna Quad.

Gas Well

Company Godfrey L. Cabot, Inc.
Address Charleston, W. Va.
Farm Poca Coal Land Co. ACRES -
Well No. 2 - Serial 951 ELEV. 864
District Poca - Kanawha County
Surface & Mineral -
Commenced June 29, 1940
Completed Sept. 28, 1940
Shot 10/1/40 - depth 5036-5051 - 30 qts.
5068-5073 - 10 qts.
Open Flow 23/10ths M in 8" - 20 min. A.S.
Volume 2,099,000 c.f.
Rock Pressure Oriskany 1150 lbs. 60 hrs.
Water -

CASING & TUBING

10-3/4 1806
Casing shoe - 15 sacks
Aquagel
1 1/2 665-5 665-5
8-5/8 2040
Casing shoe - 20 sacks
Aquagel
7 4951 4951
B.H.Packer - 64 sacks
Aquagel 250# Fibrotex
2-3/8 5139 5139

Soil red	0	6		Berea Sand	2413	2430	Sm. Show
Red Rock	6	55					Gas 2420
Slate - blue	55	80		Slate & Shells	2430	3648	
Red Rock	80	120		Brown Shale	3648	3670	
Slate	120	155		Slate & Shells	3670	4048	Sm. Show
Red Rock	155	325					Gas 4043
Lime	325	350		Brown Shale	4048	4190	
Red Rock	350	430		Slate Shells	4190	4950	
Lime	430	450		Brown Shale	4650	4830	
Sand	450	487		Gray Shale	4830	4840	
Slate & Shells	487	540		Black Shale	4840	4930	
Sand	540	560		Corniferous Lime	4930	5035	S.L. 4951
Slate	560	575		Oriskany Sand	5035	5084	S.L. 5038
Red Rock	575	620		Black Lime	5084	5139	S.L. 5139
White Slate	620	625		Total Depth			
Red Rock	625	638					
Sand	638	700					
Slate & Shells	700	948	Bad cave	GAUGES IN ORISKANY SAND:			
Sand	948	1020	at 900	4038	283 M		
Slate - black	1020	1050		5043	421 M		
Slate & Shells	1050	1357		5043	520 M		
Salt Sand	1357	1712	SW 1458	5048	848 M		
			filled up	5051	794 M		
			to 600'	5054	765 M		
			of top	5055	735 M		
Slate	1712	1715		5063	765 M		
Lime	1715	1726		5065	735 M		
Sand	1734	1745		5074	703 M		
Little Lime	1745	1784		5075	735 M		
Pencil Cave	1784	1789		5077	703 M		
Big Lime	1789	1951	S.L. 1951	5079	671 M		
			Gas 1833-1836	5080	703 M		
			134 M	5082	671 M		
Slate	1851	1960		5091	636 M		
Injun Sand	1960	1995	S.L. 1995	5094	671 M		
			Water 1972	5105	636 M		
Slate	1995	2040		5126	636 M		
Lime	2040	2060		5130	600 M		
Slate	2060	2085					
Lime	2085	2150		GAUGES AFTER SHOT:			
Slate & Shells	2150	2413			2,099 M		

BEFORE SHOT:
625 M

4930 5035 5084
864 864 864

4065 4171 4220