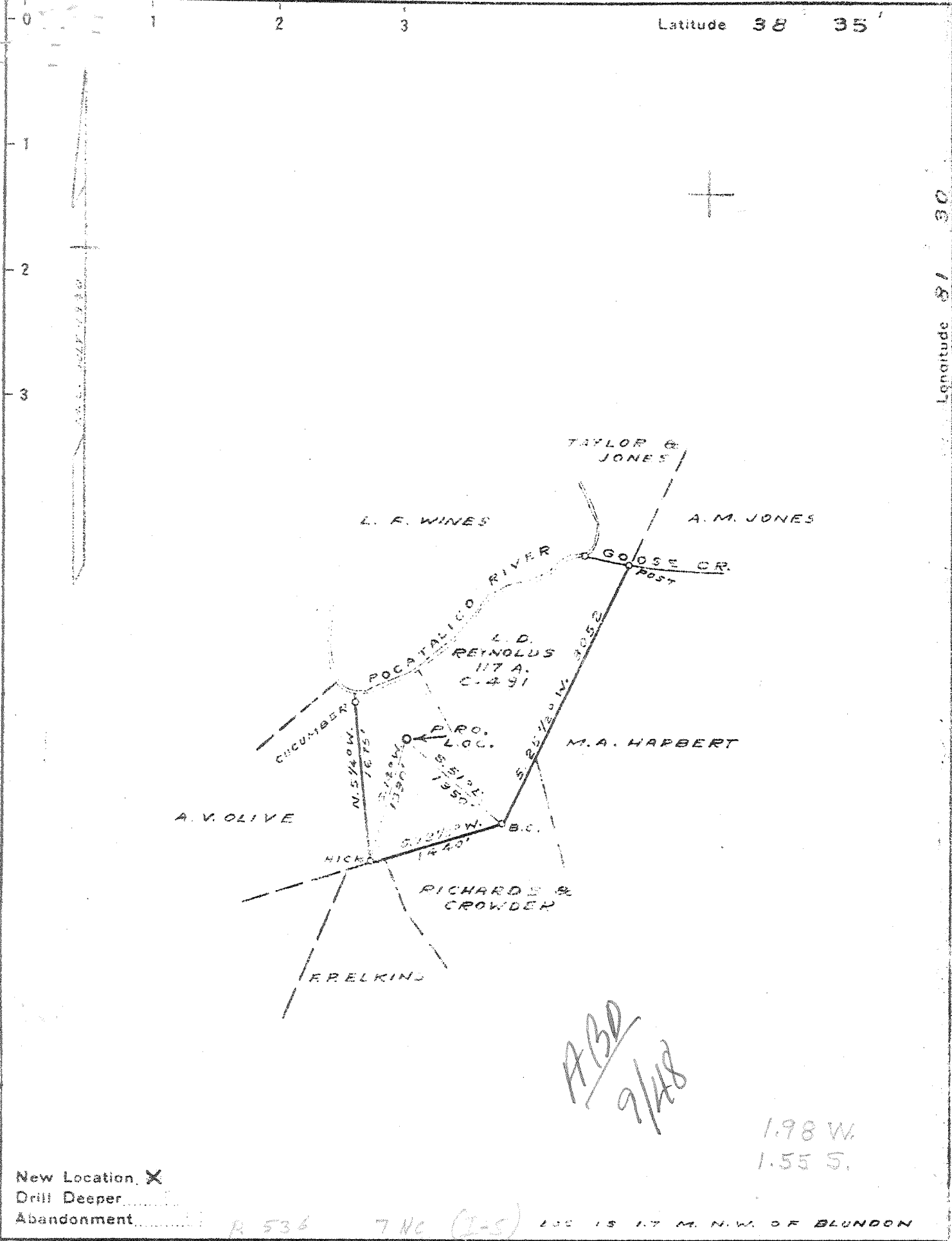


P



New Location
 Drill Deeper.....
 Abandonment..... R 536 7 NC (I-S) LOC IS 1.7 M. N.W. OF BLUNDON

Company COLUMBIAN CARBON CO.
 Address BOX 1240 - CHARLESTON - W.VA.
 Farm L. D. REYNOLDS.
 Tract _____ Acres 117 Lease No. C-491
 Well (Farm) No. ONE Serial No. _____
 Elevation (Spirit Level) 879.4
 Quadrangle KENNA S.E. 7
 County KANAWHA District POCA
 Engineer J. R. Bell
 Engineer's Registration No. 772
 File No. _____ Drawing No. _____
 Date 7-18-40 Scale 1" = 1320'

STATE OF WEST VIRGINIA
 DEPARTMENT OF MINES
 OIL AND GAS DIVISION
 CHARLESTON

WELL LOCATION MAP
 FILE NO. KAN-728

+ Denotes location of well on United States Topographic Maps, scale 1 to 62,500, latitude and longitude lines being represented by border lines as shown.
 - Denotes one inch spaces on border line of original tracing.

Deep Well

WEST VIRGINIA DEPARTMENT OF MINES
OIL & GAS DIVISION
W E L L R E C O R D

Permit No. Kan-728
Kenna S. E. Quad.

Gas Well

Company Columbian Carbon Co.
Address Box 1240, Charleston, W. Va.
Farm L. D. Reynolds ACRES 117
Location Pocatalico River
Well No. 1 (GW-465) ELEV. 883.5 DF
District Poca - Kanawha County
Surface & Mineral L. D. Reynolds, et ux
 Island Branch, W. Va.
Commenced Aug. 16, 1940
Completed Dec. 21, 1940
Shot 12/18/40 - depth 5114-45 SLM
Volume 1,220,000 c.f.
Rock Pressure 1640 lbs. 10 days
Fresh Water 740 - 4-10" blrs. per hr.
Salt Water 1390 - hole full

CASING & TUBING

14	37-6	37-6
10-3/4	500-1	pulled
8-5/8	1890-9	1890-9
7	5033-4	5033-4
2-3/8	5199-8	5199-8 ✓
3-1/2	84-1	84-1

No packer

Clay	0	25
Slate	25	40
Sand	40	55
Slate	55	60
Red Rock	60	85
Slate	85	120
Sand	120	170
Slate	170	200
Red Rock	200	240
Slate	240	265
Red Rock	265	300
Slate	300	360
Lime	360	380
Shale	380	435
Sand	435	460
Shale	460	488
Sand	488	502
Shale	502	535
Sand	535	745 FW 740
Slate	745	845
Sand	845	910
Slate	910	965
Sand	965	1025
Slate	1025	1060
Sand	1060	1075
Slate	1075	1135
Sand	1135	1290
•Salt Sand	1290	1598 HFSW 1390
•Maxton Sand	1598	1614
•Little Lime	1614	1638
Slate	1638	1641
Lime	1641	1647
•Slate	1647	1652
•Big Lime	1652	1808 Gas 1705
		Show
•Big Injun Sand	1808	1848
Slate Shells	1848	1871
Black Lime	1871	1891
Slate	1891	2210
Brown Shale	2210	2225
Shale	2225	2450
Shell	2450	2455
Slate	2455	2485
Shell	2485	2493
Slate	2493	3540
Lime Shell	3540	3640
Slate	3640	3900
Brown Shale	3900	4144

White Slate	4144	4565
Brown Shale	4565	4890
White Slate	4890	4928
Brown Shale	4928	4940
•Black Shale	4940	4983 HSLM
→ Corniferous Lime	HSLM 4983	5102 SLM
•Oriskany Sand	SLM 5102	5148
↓ Lime break	5148	5164
•Oriskany Sand	5164	5180
•Black Lime	5180	5182
Total Depth		6182

Pay: 5126-5140

CEMENT RECORD:

8/29/40 - Aquaged 10" casing. Ran 7 sacks of Aquagel. Ran plug on top Aquagel. Aquaged by F. M. Mills, Halliburton Oil Well Cementing Co.

9/28/40 - Cemented 8-5/8 casing. Ran 75 sacks Alpha cement, mixed with 2% Aquagel. Ran 6 sacks aquagel ahead of cement. Ran plug on top of Aquagel and plug on top cement. 16' of cement in hole. L. C. Miller, Cementer, Halliburton Oil Well Cementing Co.

12/3/40 - Casing tested, rocked up to 700# and gas broke thru casing - leaking. Ran tubing to put on squeeze job. Ran 15 sacks Alpha cement. Cemented by F. M. Mills, Halliburton Oil Well Cementing Co.