

New Location
 Drill Deeper
 Abandonment issued 6-4-70

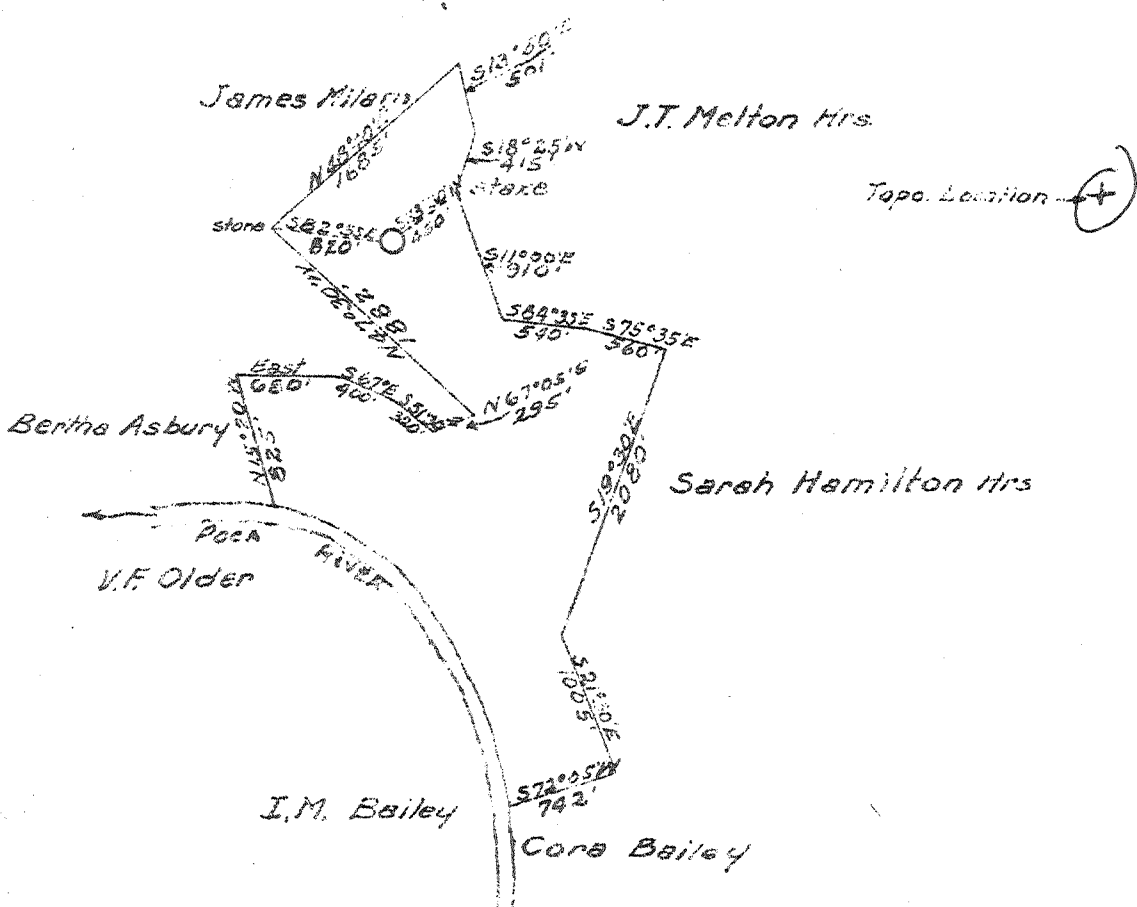
Company CABOT CORP
GOOSEY L. CABOT INC
 Address 600 UNION BLDG CHARLESTON W.V.
 Farm MARY A. MASON
 Tract _____ Acres 12.53 Lease No. 3-530
 Well (Farm) No. 1 Serial No. 962
 Elevation (Spirit Level) _____
 Quadrangle KENNA SW
 County KANAWHA District POCA
 Engineer Charles N. Sturm
 Engineer's Registration No. 975
 File No. _____ Drawing No. _____
 Date JULY 29 1946 Scale 1" = 1320'

STATE OF WEST VIRGINIA
 DEPARTMENT OF MINES
 OIL AND GAS DIVISION
 CHARLESTON

WELL LOCATION MAP
 FILE NO. KAN-731-P

+ Denotes location of well on United States Topographic Maps, scale 1 to 62,500, latitude and longitude lines being represented by border lines as shown.
 - Denotes one inch spaces on border line of original tracing.

Latitude 38 35
Longitude 81 40



1.54 W.
5.01 S.

New Location +
Drill Deeper
Abandonment

Company GODFREY L. CABOT INC.
Address 600 UNION BLDG. CHARLESTON W.V.
Farm MARY A. MASON
Tract _____ Acres 12.52 Lease No. 3-530
Well (Farm) No. 1 Serial No. 362
Elevation (Spirit Level) N780 7.5' 3000 KLA 11/1/87
Quadrangle KENNA SW
County KANAWHA District POCA
Engineer Charles H. Sturm
Engineer's Registration No. 975
File No. _____ Drawing No. _____
Date July 29 1948 Scale 1" = 1320'

STATE OF WEST VIRGINIA
DEPARTMENT OF MINES
OIL AND GAS DIVISION
CHARLESTON

WELL LOCATION MAP
FILE NO. KAN-731

+ Denotes location of well on United States Topographic Maps, scale 1 to 62,500, latitude and longitude lines being represented by border lines as shown.
- Denotes one inch spaces on border line of original tracing.

