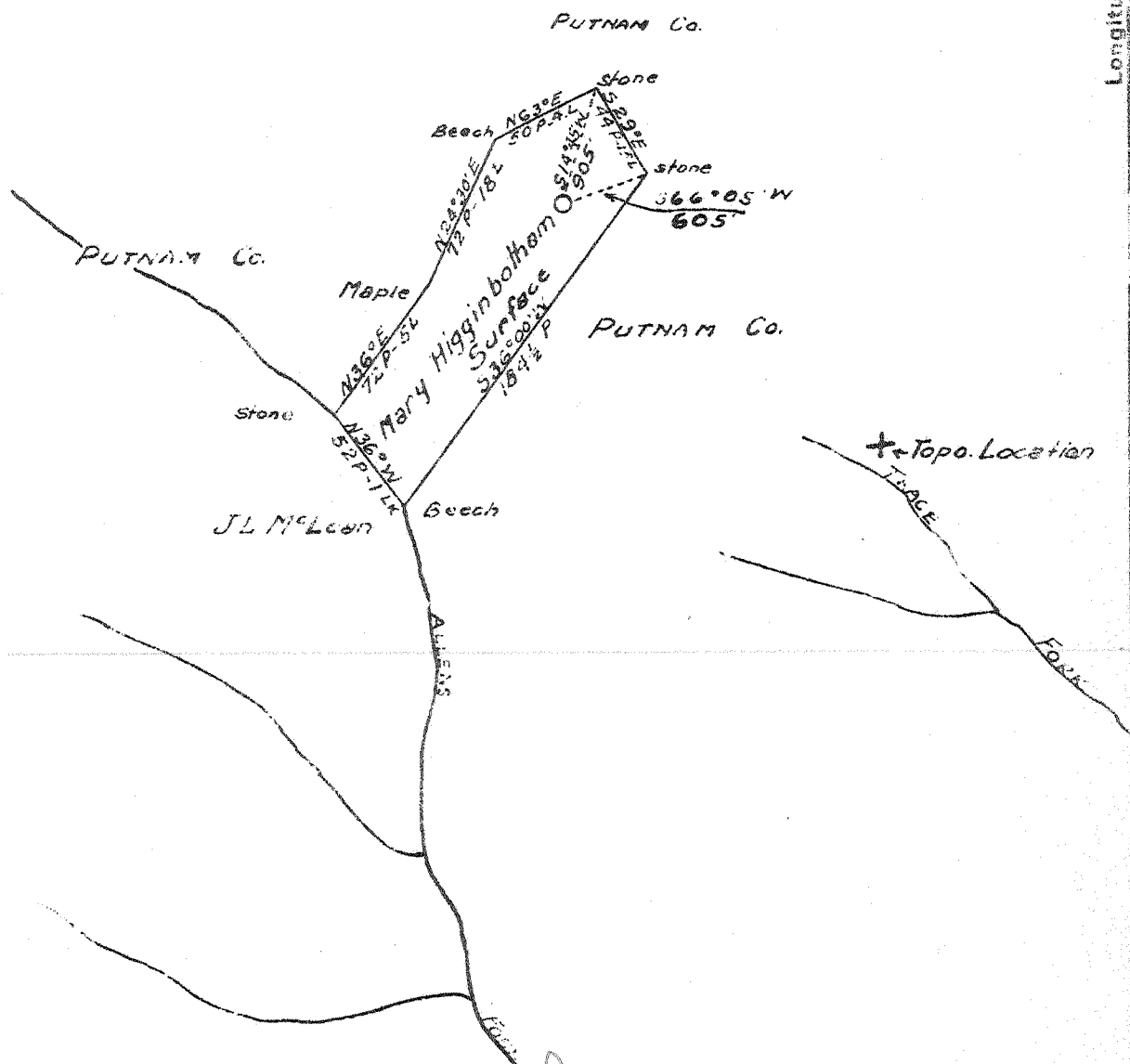


Latitude 38 - 40

Longitude 81 - 40



ALSO
10/48

W - 1.4
S - 4.66

New Location
 Drill Deeper
 Abandonment

Sheet #3

Company GODFREY L CABOT INC.
 Address 600 UNION BLDG. CHARLESTON W.VA
 Farm J.L. McLEOD Mrs.
 Tract _____ Acres 62½ Lease No. 3-103
 Well (Farm) No. 7 Serial No. 966
 Elevation (Spirit Level) 922.95 Ground
 Quadrangle KENNA W.V.
 County KANAWHA District POCA
 Engineer Charles R. Sturman
 Engineer's Registration No. 97
 File No. _____ Drawing No. _____
 Date Aug 30 1940 Scale 1"=1320'

STATE OF WEST VIRGINIA
 DEPARTMENT OF MINES
 OIL AND GAS DIVISION
 CHARLESTON

WELL LOCATION MAP
 FILE NO. KAN-748

+ Denotes location of well on United States Topographic Maps, scale 1 to 62,500, latitude and longitude lines being represented by border lines as shown.

- Denotes one inch spaces on border line of original tracing.



WEST VIRGINIA DEPARTMENT OF MINES
OIL & GAS DIVISION
W E L L R E C O R D

Permit No. Kan-748
Kenna Quad.

Gas Well

Company Godfrey L. Cabot, Inc.,
Address Charleston, W. Va.
Farm J. L. McLean Hrs. ACRES -
Well No. 7 - Serial 966 ELEV. 922.95 Gr.
District Poca - Kanawha County
Surface & Mineral -
Commenced Oct. 14, 1940
Completed Jan. 21, 1941
Shot 1/24/41 - depth 5108-5122 - 20 Qts.
5133-5143 10 "
Volume 7,678,000 c.f. - 20 min. A.S.
Rock Pressure 1670 lbs. 17½ hrs. - Oriskany
Water -

CASING & TUBING

10-3/4	876	876
8-5/8	2170	0
7	5037	5037

10-3/4 O.D. Casing shoe
8-5/8 O.D. Casing Shoe
7" O.D. x 8½ Oriskany
B. H. Packer

Red Rock	0	30	Slate&Shells	2350	2530
Sand	30	50	Berea Sand	2530	2550
Red Rock	50	100	Slate&Shells	2550	3770
White Slate	100	110	Shale	3770	3800
Red Rock	110	160	Slate&Shells	3800	4000
Slate	160	170	Brown Shale	4000	4055
Red Rock	170	200	Slate&Shells	4055	4115
Slate	200	215	Brown Shale	4115	4230
Red Rock	215	250	Slate & Shells	4230	4300
Slate & Shells	250	270	Brown Shale	4300	4340
Red Rock	270	315	White Slate	4340	4740
Slate	315	355	Brown Shale	4740	4975
Red Rock	355	380			Sh. Gas at 4795
White Slate	380	390	Black Shale	4975	5012
Red Rock	390	415			Wouldn't gauge
Slate & Shells	415	550	Corniferous	5012	5108
Red Rock	550	585	Oriskany	5108	5158
Slate	585	590	Line	5158	5168
Gray Lime	590	620	Broken Sand	5168	5183
Sand	620	665	Total Depth		5183
Red Rock	665	680			
Slate & Shells	680	700			
Red Rock	700	735			
Slate	735	795			
Red Rock	795	862			
Sand	862	900			
Black Slate	900	910			
White Slate	910	930			
Sand	930	1000			
White Slate	1000	1010	FW 1010		
Sand	1010	1035	1 BPH		
Slate	1035	1045			
Sand	1045	1060			
Slate & Shells	1060	1140			
Black Lime	1140	1170			
White Sand	1170	1235			
Gray Lime	1235	1255			
Slate	1255	1290			
Sand	1290	1360			
Black Lime	1360	1410			
Gray Lime	1410	1440			
Slate & Shells	1440	1540			
White Sand	1540	1575			
Slate	1575	1680			
Salt Sand	1680	1980			
Big Lime	1980	2115	HFSW 2015		
			Water level		
			400' down		
Slate	2115	2120	Sh. Gas 2015		
Injun	2120	2165	Wouldn't gauge		
Lime	2165	2350			

GAUGES IN ORISKANY SAND - BEFORE SHOT

1/17/41	5108-12	152 M
1/17/41	5112-17	3,340 M
1/17/41	5119	3,951 M
1/17/41	5120	3,449 M
1/18/41	5122	3,227 M
1/18/41	5124	2,864 M
1/19/41	5131	2,864 M
1/19/41	5133-37	3,181 M
1/19/41	5140	3,181 M
1/19/41	5140-2	3,487 M
1/20/41	5144	3,181 M
1/20/41	5147	2,844 M
1/21/41	5165	2,844 M
1/22/41	5163	2,466 M
1/23/41	5174	2,466 M

GAUGES IN ORISKANY SAND - AFTER SHOT

1/24/41	5 min. A.S.	8,540 M	2# B.Pr.
1/24/41	10 "	"	7,900 M " "
1/24/41	15 "	"	7,678 M 1-3/4# B.Pr.
1/24/41	20 "	"	7,678 M " "