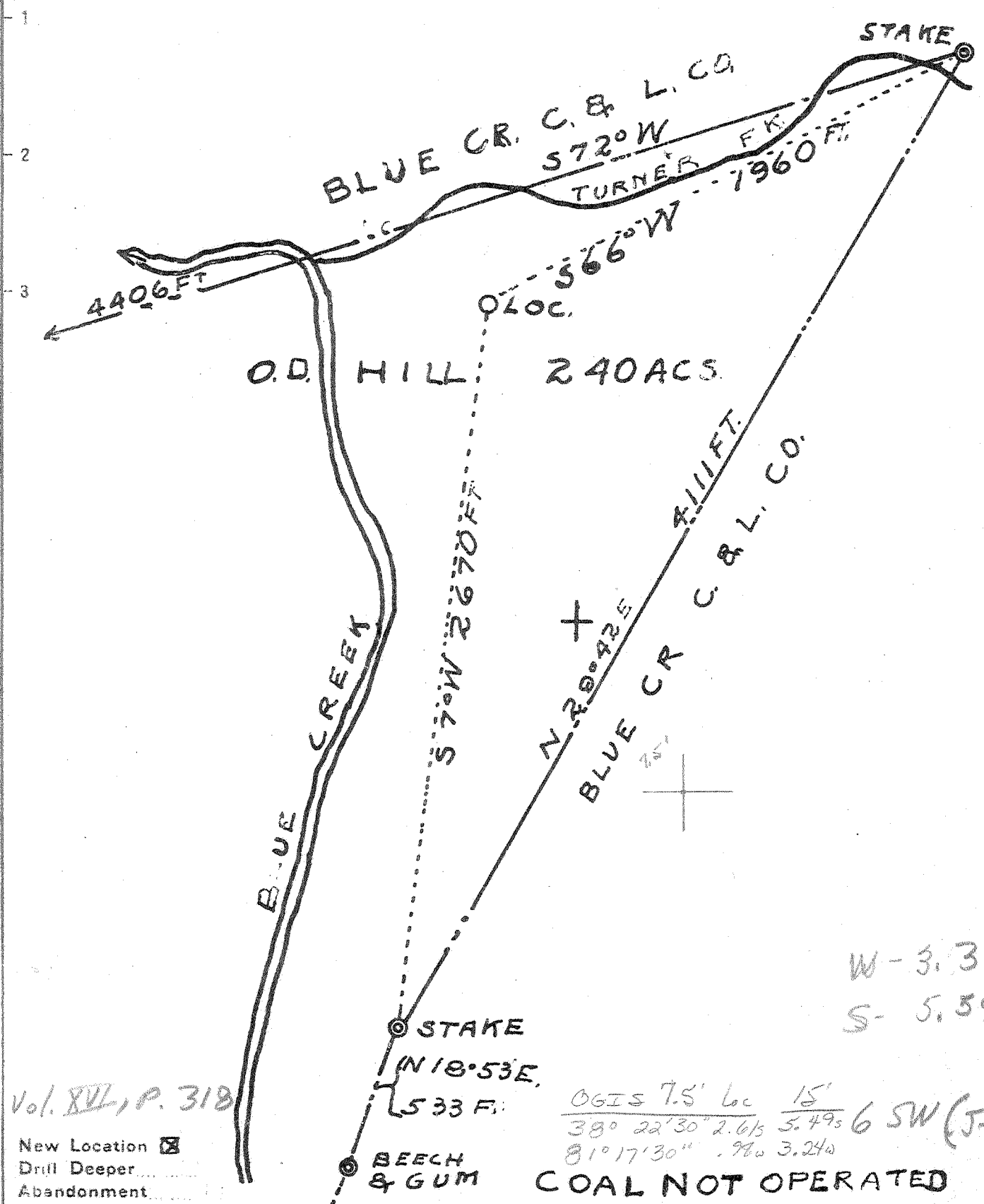


Latitude 38° 25'

Longitude 81° 15'



W-3.37
S-5.39

Vol. XL, P. 318

New Location
 Drill Deeper
 Abandonment

OGIS 7.5' Loc 15'
 38° 22' 30" 2.615 5.495 6 SW (J-B)
 81° 17' 30" .986 3.240
COAL NOT OPERATED

Company DELMOS HILL
 Address A CUP W.VA.
 Farm O.D. HILL
 Tract 2 Acres 240 Lease No. _____
 Well (Farm) No. 1 Serial No. _____
 Elevation (Spirit Level) 875.00 (STADIA)
 Quadrangle CLENDENI N-EC
 County KANAWHA District ELK
 Engineer C. G. Krebs
 Engineer's Registration No. 9
 File No. _____ Drawing No. _____
 Date 10-19-40 Scale 1" = 500 FT.

STATE OF WEST VIRGINIA
 DEPARTMENT OF MINES
 OIL AND GAS DIVISION
 CHARLESTON

WELL LOCATION MAP
 FILE NO. KAN-752

+ Denotes location of well on United States Topographic Maps, scale 1 to 62500, latitude and longitude lines being represented by border lines as shown.
 - Denotes one inch spaces on border line of original tracing.

1-0

Deep Well

WEST VIRGINIA DEPARTMENT OF MINES
OIL & GAS DIVISION
WELL RECORD

Dry Hole

Permit No. Kan 752	O.D. Hill	Well
Company	1580 Lee St., Charleston, W.Va.	10 - 29
Address	O.D. Hill Acres 234	8 1/2 - 390
Farm	Turners Fork of Blue Creek	6 5/8 - 1608
Location	2 Elev. 875 (Approx)	Steel shoe on
Well No.	Elk Kanawha County	8 1/2 and 6 5/8
District	O.D. Hill Hrs., 1580 Lee St.	Coal at 432' to 439'
Surface	Chas., W.Va.	
Mineral	Same	
Commenced	---	No record of
Completed	(not completed) Sept 5, 1945	casing & tubing
Flow	Show only	used in drilling.
Fresh Water	220', 240'	
Salt Water	845' 1130'	

Sand	Y	S	0	10	Lime Shells	Dk	H	4095	4105
Sand	Gr	H	10	70	Brown Shale		S	4105	4130
Sand	Gr	S	70	110	Lime Shells	Wh	H	4130	4140
Lime	Wh	H	110	220	Brown Shale	Dr	S	4140	4165
Lime	Bk	H	220	240	Slate & Brown Shale		S	4165	4220
Lime	Bk	M	240	265	NOTE: well incompleted - shall drill to Oriskany in the near future.				
Slate	Gr	S	265	305					
Sand	Gr	S	305	325	Carniferous lime 5383 - 5404 Oriskany } 5404 - 5533 White Sand } 5533 - 5542 Lime } 5542 - 5551 Sand } 5551 - 5561 Increased } 5561 - 5583 TD				
Slate	Gr	M	325	360					
Sand	Wh	H	360	368					
Slate	Dk	S	368	395					
Lime	Gr	H	395	408					
Sand	Gr	H	408	432					
Coal	Dk	V.S.	432	439					
Sand	Gr	M	439	451					
Lime	Wh	H	451	488					
Slate	Bk	S	488	490					
Lime Shell	Wh	H	490	500					
Sand	Gr	S	500	525					
Slate	Gr	S	525	537					
Lime	Gr	H	537	666					
Sand	Gr	H	666	688					
Lime	Gr	H	688	708					
Sand	Gr	H	708	750					
Lime	Dk	M	750	805					
Sandy Grampus	Wh	H	805	845					
Salt Sand	Wh	H	845	953					
Lime	Wh	H	953	1008					
Salt Sand	Wh	H	1008	1130 (Water Artesion)					
Lime	Dk	H	1130	1146					
Salt Sand	Wh	H	1146	1230					
Lime	Bk	H	1230	1260					
Red Rock		S	1260	1300	Small cave in				
Slate	Gr	S	1300	1320					
Lime	Gr	H	1320	1360					
Sandy Lime	Gr	H	1360	1376					
Red Rock		S	1376	1388	very gravelly				
Lime	Wh	H	1388	1458					
Sand	Salt & Pepper	M	1458	1482					
Slate	Dk	H	1482	1500					
Lime	Gr	H	1500	1517					
Maxon Sand	S&P	M	1517	1540					
L. Lime	Wh	H	1540	1562					
Slate	Gr	S	1562	1575					
L. Lime	Gr	H	1575	1595					
Pencil Cave	Gr	V.S.	1595	1598	Small cave in.				
Big Lime	Wh	H	1598	1760					
B. Injun Sand	R	M	1760	1826					
Weir Sand	Gr. S&P	M to S	1826	1946					
Slate & Shells	Gr	M	1946	2197 (Slate & Coffee Shells)					
Berea	Br	M	2197	2279					
Slate & Shells	Gr	M	2279	3363					
Lime & Shells	Bk	H	3363	3460					
Slate & Shells	Gr	S&H	3460	4053					
Lime Shells	Gr	H	4053	4095					

5383	5404	5561
875	875	
4508	4529	4686
5533		
875		
4658		



STATE OF WEST VIRGINIA
DEPARTMENT OF MINES
OIL AND GAS DIVISION

WELL RECORD

Oil or Gas Well (KIND)

Permit No. KAH-758

Company O. Deinas Hill
Address 1580 Lee Street - Charleston, W. Va.
Farm O. D. Hill Acres 240
Location (waters) Blue Creek
Well No. 2 Elev. 875 - 824 ft
District E1K County Kanawha
The surface of tract is owned in fee by O. D. Hill Hrs.
Address Chas. W. Va.
Mineral rights are owned by Same
Address _____

Casing and Tubing	Used in Drilling	Left in Well	Packers
Size			Kind of Packer
16			
12			
10		<u>22</u>	Size of
8 1/4		<u>290</u>	
6 3/4		<u>1608</u>	Depth set
5 3/16		<u>5323</u>	
8			Perf. top
	<u>2 steel show on 8-1/4 & 6-5/8</u>		Perf. bottom
Liners Used			Perf. top
			Perf. bottom

Drilling commenced September 1940 - suspended 6/1/41
Drilling completed September 1945 (9/6/45)
Date Shot From _____ To _____
With _____
Open Flow /10ths Water in _____ Inch
/10ths Merc. in _____ Inch
Volume _____ Cu. Ft.
Rock Pressure _____ lbs. _____ hrs.
Oil _____ bbls., 1st 24 hrs.
Fresh water 220 feet 240 feet
Salt water 845 feet 1130 feet

CASING CEMENTED SIZE No. Ft. Date
COAL WAS ENCOUNTERED AT 452 FEET 12" INCHES
FEET INCHES FEET INCHES
FEET INCHES FEET INCHES

Formation	Color	Hard or Soft	Top	Bottom	Oil, Gas or Water	Depth Found	Remarks
JULY 19, 1945 - cleaning out from 4178 to 4220'							
Slate and shale			4220	4305			
White slate			4305	4400			
Brown Shale			4400	4451			
White slate			4451	4920			
Brown Shale			4920	5310			
Black Shale			5310	5383			
CORNIFEROUS LIME			5383	5404			
ORISKANY			5404	5533			
White Sand			5533	5542			
Lime			5542	5551			
Sand			5551	5561			
Lime Sand			5561	5585			
Total Depth			5585				

NOTE: show of gas in Big Line 1698-1700
Big Injun - dry 1700 - 1826
Hair - gas approximately 30,000 daily and show of oil

DEEP WELL

STATE OF WEST VIRGINIA
DEPARTMENT OF MINES
OIL AND GAS DIVISION

WELL RECORD

Oil or Gas Well (KIND)

Permit No. KAN-762

Company O. Delmas Hill
 Address 1690 Lee Street - Charleston, W. Va.
 Farm O. D. Hill Acres 240
 Location (waters) Blue Creek
 Well No. 2 Elev. 875 Stadia
 District Elk County Kanawha
 The surface of tract is owned in fee by O. D. Hill Hrs.
 Address Chan. W. Va.
 Mineral rights are owned by Same
 Address _____
 Drilling commenced September 1940 Suspended 6/1/41
 Drilling completed September 1945 (9/5/45)
 Date Shot _____ From _____ To _____

Casing and Tubing	Used in Drilling	Left in Well	Packers
Size			Kind of Packer
16			
18		29	Size of
10		390	
8 1/4		1608	Depth set
6 3/4		5325	
5 3/16			Perf. top
3			Perf. bottom
2	Steel Shoe on 8-1/4 & 6-5/8		Perf. top
Liners Used			Perf. bottom

With _____
 Open Flow _____ /10ths Water in _____ Inch
 _____ /10ths Merc. in _____ Inch
 Volume _____ Cu. Ft.
 Rock Pressure _____ lbs. _____ hrs.
 Oil _____ bbls., 1st 24 hrs.
 Fresh water _____ 220 feet _____ 240 feet
 Salt water _____ 845 feet _____ 1130 feet

CASING CEMENTED _____ SIZE _____ No. Ft. _____ Date _____
 COAL WAS ENCOUNTERED AT 432 FEET 12" INCHES
 _____ FEET _____ INCHES FEET _____ INCHES
 _____ FEET _____ INCHES FEET _____ INCHES

Formation	Color	Hard or Soft	Top	Bottom	Oil, Gas or Water	Depth Found	Remarks
Sand	yellow	soft	0	10			
Sand	grey	hard	10	70			
Sand	"	soft	70	110			
Lime	white	hard	110	220			
Lime	black	hard	220	240	Water		
Lime	black	medium	240	265			
Slate	grey	soft	265	305			
Sand	grey	soft	305	325			
Slate	grey	medium	325	360			
Sand	white	hard	360	368			
Slate	black	soft	368	395			
Lime	Grey	hard	395	408			
Sand	grey	hard	408	432			
COAL	black	soft	432	439			
Sand	grey	medium	439	451			
Lime	white	hard	451	488			
Slate	black	soft	488	490			
Sand	grey	soft	490	500			
Lime Shell	Slate	soft	500	525			
Slate	grey	soft	525	537			
Lime	grey	hard	537	666			
Sand	grey	hard	666	688	Show of gas	688'	
Lime	Grey	hard	688	708			
Sand	grey	hard	708	750			
Lime	black	medium	750	805			
Sandy Grampus		hard	805	845			
SALT SAND	white	hard	845	953	salt water		
Lime	white	hard	953	1008			
SALT SAND	white	hard	1008	1130	salt water - Artesian		
Lime	black	hard	1130	1146			
SALT SAND	white	hard	1146	1230	salt water		
Lime	black	hard	1230	1260			
Red rock	red	soft	1260	1300	small cave		
Slate	grey	soft	1300	1320			
Lime	grey	hard	1320	1360			
Sandy Lime	grey	hard	1360	1376			
Red Rock	red	soft	1376	1388	very gravelly		
Lime	white	hard	1388	1458			
Sand	Grey 7 wht	medium	1458	1452			

(Over)

DEEP WELL

Formation	Color	Hard or Soft	Top	Bottom	Oil, Gas or Water	Depth Found	Remarks
NO. D. HILL WELL NO. 2 - PERMIT KAN-752							
Slate	blue	hard	1482	1500			
Lime	grey	hard	1500	1517			
MAXON	"	medium	1517	1540			1/2 bbl oil estimated
LITTLE LIME	White	hard	1540	1562			
Slate	grey	soft	1562	1575			
LITTLE LIME	grey	hard	1575	1595			small cave
Pencil Cave	grey	soft	1595	1598			show of gas
BIG LIME	white	hard	1598	1760			dry
BIG INJUN	red	medium	1760	1826			Gas - approx. 30 M daily and show of oil
WEIR	Grey	medium to soft	1826	1946			
Slate & Shells		medium	1946	2197			
BEREA	brown	medium	2197	2279			
Slate & Shells		medium	2279	3363			
Lime & Shells		hard	3363	3460			
Slt & Sh	grey	soft to hard	3460	4053			
Lime Shells	grey	hard	4053	4095			
Lime Shells	black	hard	4095	4105			
Brown Shale	brown	soft	4105	4130			
Lime Shells	white	hard	4130	4140			
Brown Shale	brown	soft	4140	4165			
Slt & Br. Sh	brown	soft	4165	4220			
JULY 19, 1945 - cleaning out from 4176 to 4220'							
Slt. & Sh			4220	4305			
White Slate			4305	4400			
Brown Shale			4400	4431			
White Slate			4431	4920			
Brown Shale			4920	5310	5 7/16	5323	
Black Shale			5310	5383			
CORNIFEROUS LIME			5383	5404			
ORISKANY			5404	5533	5 7/16	5	
White Sand			5533	5542			
Lime			5542	5551			
Sand			5551	5561			
Lime Sand			5561	5585			
TOTAL DEPTH				5585			

APPROVED _____ Date _____

BY _____ (Title)