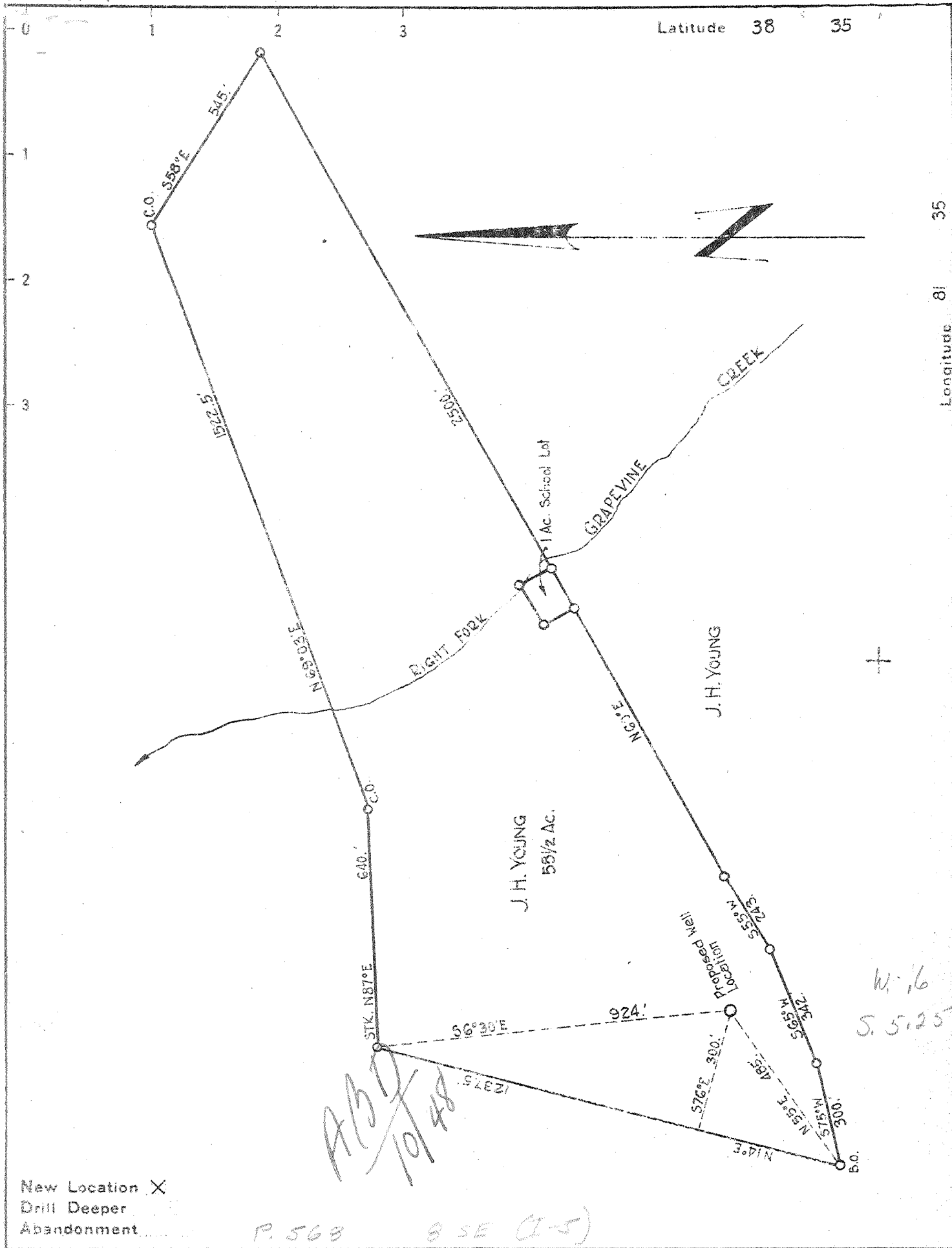


4M

P



New Location X
 Drill Deeper
 Abandonment

P. 568 8 SE (1-5)

Handwritten: ASD 10/148

Company HAYES OIL & GAS CO.
 Address CLENDENIN, W. VA.
 Farm J.H. YOUNG
 Tract _____ Acres 58 1/2 Lease No. _____
 Well (Farm) No. ONE Serial No. _____
 Elevation (Spirit Level) ~~900'~~ 960' ^{7.5} top 2-04 K/LA
 Quadrangle KENNA SC
 County KANAWHA District POCA
 Engineer A.E. PRICE
 Engineer's Registration No. 819
 File No. _____ Drawing No. _____
 Date 10/12/40 Scale 1" = 2000'

STATE OF WEST VIRGINIA
 DEPARTMENT OF MINES
 OIL AND GAS DIVISION
 CHARLESTON

WELL LOCATION MAP
 FILE NO. KAN-755

+ Denotes location of well on United States Topographic Maps, scale 1 to 62,500, latitude and longitude lines being represented by border lines as shown.
 - Denotes one inch spaces on border line of original tracing

Handwritten: Deep Well

WEST VIRGINIA DEPARTMENT OF MINES
OIL & GAS DIVISION
W E L L R E C O R D

Permit No. Kan-755
Kenna Quad.

Gas Well

Company Hays Oil & Gas Co.
Address Clendenin, W. Va.
Farm R. A. Young ACREs -
Location Grapevine
Well No. 1 ELEV. ~~1175~~ 960' → ok
District Poca - Kanawha County
Surface & Mineral Young Heirs
Address -
Commenced Nov. 15, 1940
Completed Feb. 15, 1941
Shot 3/26/41 - depth 5072-5044
Open Flow 83/10ths W in 7" - 30 min. after
Volume 4,000,000 c.f.
Rock Pressure 540 lbs. 12 hrs.
Salt Water 1245

CASING & TUBING

13	36	36
10	664	
8-1/4	1880	1880
7	4946	4946
3	5114	5114

Packer - Spang Bottom
on 8"

Size -
Depth set - 1880

7" casing cemented 1/30/41

Red Rock	0	20
Slate	20	33
Lime Shells	33	40
Slate	40	50
Sand	50	106
Red Rock	106	114
Slate&Shells	114	123
Red Rock	123	160
Sand	160	180
Red Rock	180	302
Slate&Shells	302	330
Red Rock	330	365
Slate&Shells	365	375
Sand	375	400
Slate	400	413
Sand	413	443
Slate	443	485
Sand	485	775
Slate&Shells	775	855
Sand	855	875
Slate	875	915
Sand	915	940
Slate&Shells	940	1108
•Salt Sand	1108	1509
•Maxon	1509	1610
•Slate	1610	1615
•Little Lime	1615	1652
•Pencil Cave	1652	1654
•Big Lime	1654	1800
•Big Injun	1800	1863
•Slate&Shells	1863	2155
•Weir Shells	2155	2180
•Slate	2180	2240
•Slate&Shells	2240	2250
•Slate	2250	2265
•Lime Shells	2265	2385
•Slate&Shells	2385	3420
•Grey Lime	3420	3483
•Brown Shale	3483	3560
•Slate & Shells	3560	3937
•Brown Shale	3937	4124
•White Slate	4124	4525
•Brown Shale	4525	4890
•Black Shale	4890	4924
•Corniferous Lime	4924	5040
•Oriskany	5040	5066

Gas - Halliburton S.L.5045	5048	21/10W	2"
" " " 5048	5051	85/10W	2"
" " " 5051	5054	8/10M	2"
" " " 5054	5055	10/10M	2"
" " " 5062	5066	29/10M	2"
" " " 5085	5087	33/10M	2"
Total Depth	5118		

8-5/8" casing has round thread all but top joint where nipple screws into top joint.
Kerotest has round thread.

Gas at 2175

7" O.D. pipe run with shoe on bottom.

7" Halliburton Steel line 4946

7" O.D. 22# Spang Chalfont, round thread