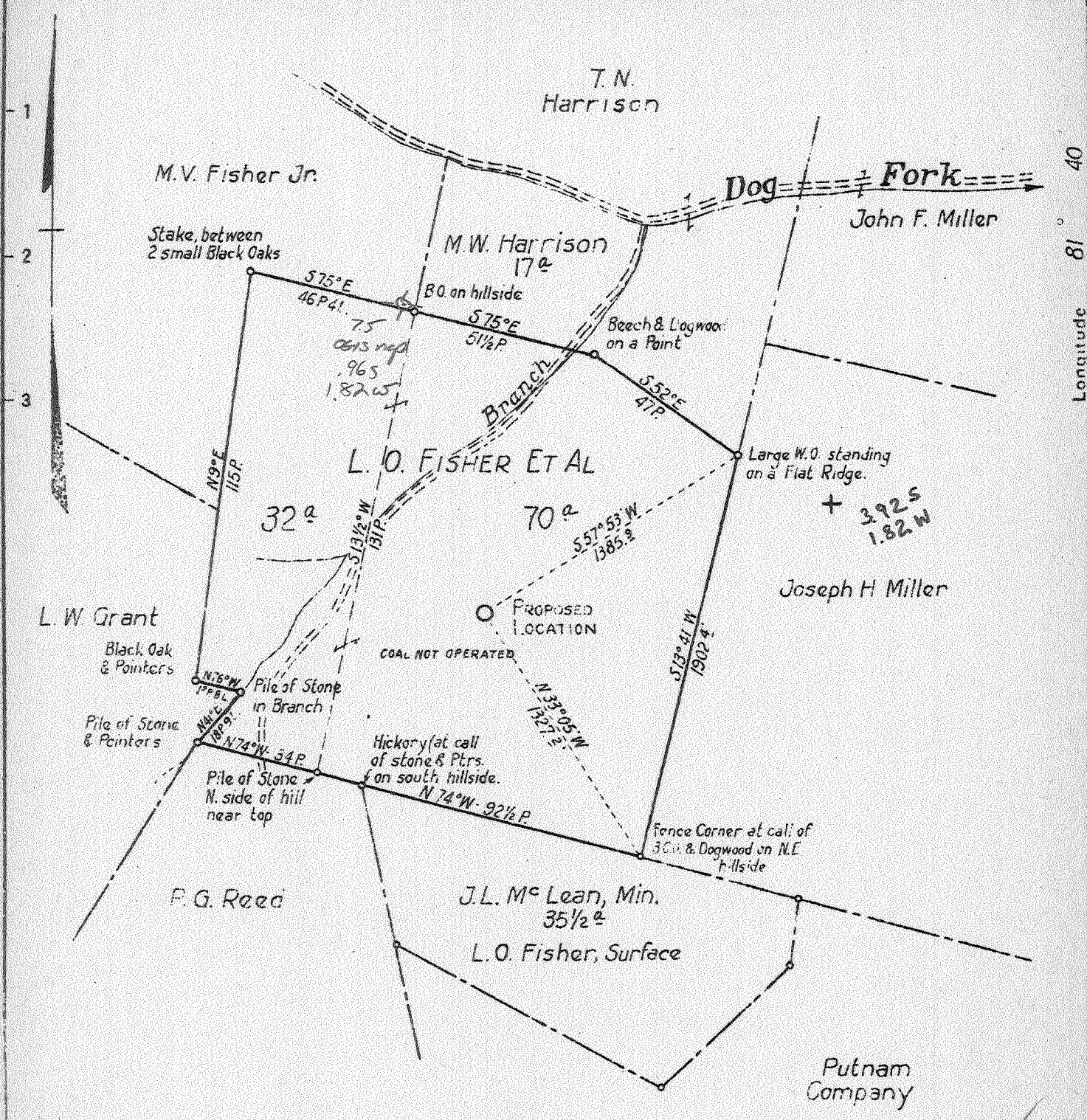


38° 37' 30"

Latitude 38° 40'

1 2 3

Longitude 81° 40'



505  
 NOV 10 1940  
 1.82 W  
 3.98 Q

New Location X  
 Drill Deeper  
 Abandonment

Company WEST VIRGINIA GAS CORPORATION  
 Address 401 UNION BLDG., CHARLESTON, W. VA.  
 Farm L.O. FISHER ET AL  
 Tract \_\_\_\_\_ Acres 102 Lease No. 0V661  
 Well (Farm) No. ONE Serial No. 047  
 Elevation (Spirit Level) \_\_\_\_\_  
 Quadrangle KENNA S.W.  
 County KANAWHA District POCA  
 Engineer W.S. GRAVELY  
 Engineer's Registration No. \_\_\_\_\_  
 File No. 3 Drawing No. \_\_\_\_\_  
 Date OCT 30, 1910 Scale 1" = 40 FEET OR 660'

STATE OF WEST VIRGINIA  
 DEPARTMENT OF MINES  
 OIL AND GAS DIVISION  
 CHARLESTON

WELL LOCATION MAP  
 FILE NO. KAN-760

+ Denotes location of well on United States Topographic Maps, scale 1 to 62,500, latitude and longitude lines being represented by border lines as shown.  
 - Denotes one inch spaces on border line of original tracing

1000

WEST VIRGINIA DEPARTMENT OF MINES  
OIL & GAS DIVISION  
W E L L R E C O R D

Permit No. Kan-760  
Kenna S. W. Quad.

Gas Well

Company West Virginia Gas Corp.,  
Address 401 Union Bldg., Charleston, W. Va.  
Farm L. I. Fisher, et al ACRES 102  
Location Branch Dog Fork  
Well No. 1 - Serial O-47 ELEV. 915.6  
District Poca - Kanawha County  
Surface & Mineral L. O. Fisher, et al, Liberty, W. Va.  
Commenced Nov. 20, 1940  
Completed Feb. 19, 1941  
Shot 2/19/41 - depth 5100-5180  
Open Flow 5/10ths Water in 7" OD (22#)  
Volume 960,000 c.f.  
Rock Pressure 1690 lbs. 21 hrs.  
Salt Water 1636 and 1732

CASING & TUBING  
16 24-10 24-10  
13-3/8 241-5  
10-3/4 908-11  
8-5/8 2163-9 2163-9  
7 5059-11 5059-11  
2 5126 5126  
Perf. top - 5101  
" bot. - 5106

CASING CEMENTED:  
8-5/8 - 125 bags  
25 bags cement behind  
7" OD

Red Clay	0	35	Slate & Shells	2565	3773
White Slate	35	105	Brown Shale	3773	3825
Red Rock	105	120	White Slate	3826	4120
White Slate	120	180	Brown Shale	4120	4340
Sand	180	202	White Slate	4340	4460
Slate	202	240	Brown Shale	4460	4488
Red Rock	240	275	White Slate	4488	4745
Slate	275	295	Brown Shale	4745	4989
Sand	295	310	Black Shale	4989	5009
Red Rock	310	410	Corniferous Lime	5009	5106
Sand	410	430	Oriskany Sand	5106	5147
Slate	430	480	Lime - 0 2	5147	5156
Limey Sand	480	505	Sand - 4-0	5156	5176
White Slate	505	533	Lime - 8	5176	5180
Red Rock	533	552	Total Depth		5180
Slate	552	567			
Red Rock	567	633			
Sand	633	670	Show oil in Salt Sand at 1602		
Slate	670	770	Settling water sand 1636 to 1732		
Sand	770	795	Gas pay 5108-5111		
Slate	795	805	" " 5123-5126		
Sand	805	850	Test before shot 2/10 W 7" 610 M		
Red Rock	850	880	Test 1 hour A.S. 18/10 W 7" 1,831 M		
Sand	880	920	Final Test 5/10 W 7" 960 M		
Slate	920	952			
Sand	952	1037	Shot 2/19/41 from 5100 to 5180 with		
Slate	1037	1125	350# free running #5 high explosive		
Sand	1125	1135	and 400# 80% gelatin.		
Slate	1135	1145			
Sand	1145	1168			
Slate	1168	1183			
Hard Sand	1183	1253			
Slate	1253	1315			
Sand	1315	1370			
Slate	1370	1478			
Sand	1478	1484			
White Slate	1484	1545			
Salt Sand	1545	1943			
Big Lime	1943	2042			
Keener Sand	2042	2064			
Slate	2064	2075			
Injun Sand	2075	2117			
Slate & Shells	2117	2140			
White Sand	2140	2144			
Slate & Shells	2144	2532			
Brown Shale	2532	2552			
Berea Sand	2552	2565			

