

Latitude 38° 23'

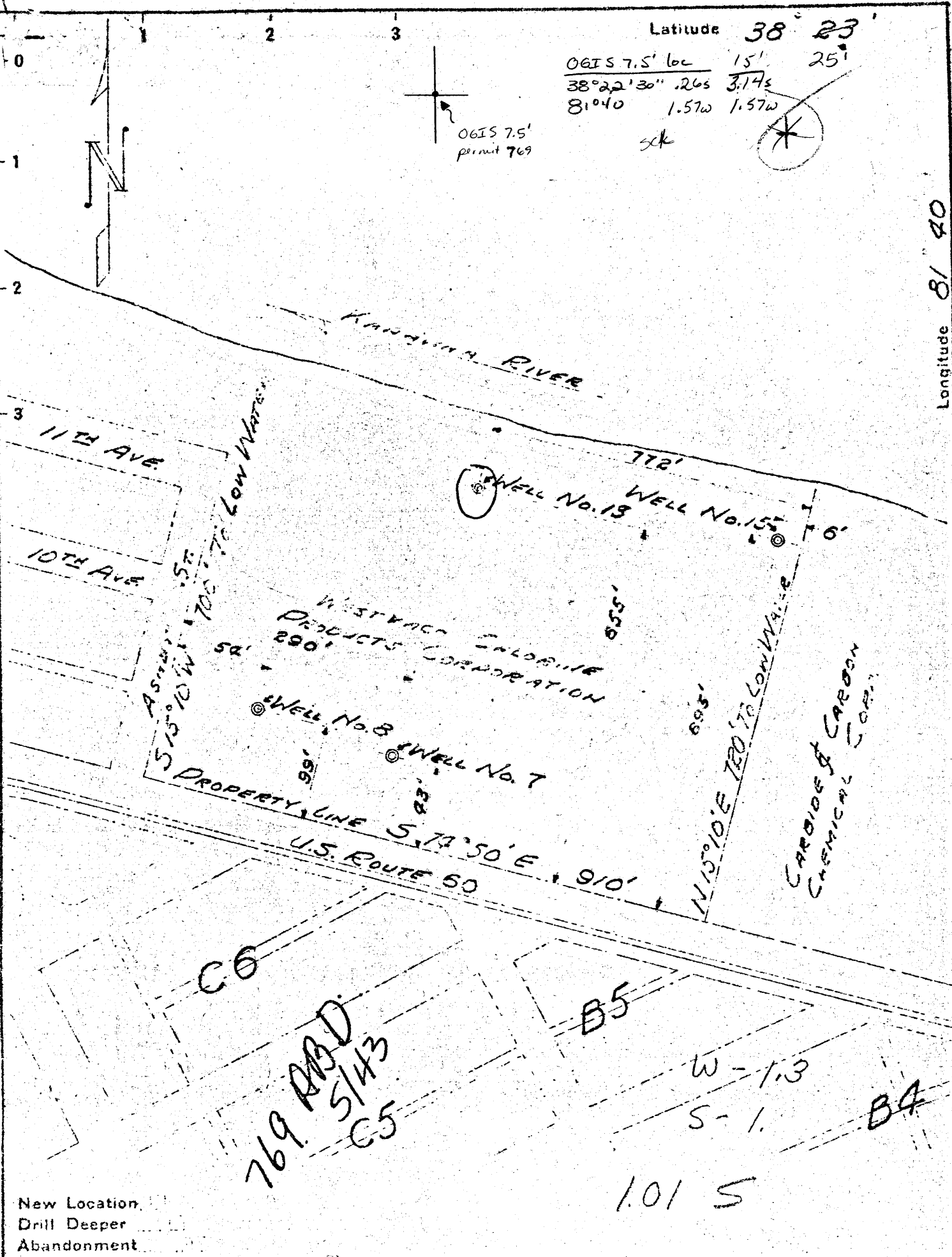
OGIS 7.5' loc 15' 25'  
38° 22' 30" .26s 3.17s  
81° 40' 1.57w 1.57w

OGIS 7.5'  
permit 769

sk



Longitude 81° 40'



New Location  
Drill Deeper  
Abandonment

Company WESTVACO CHLORINE PROD. CORP.  
Address SOUTH CHARLESTON, W. VA.  
Farm WESTVACO CHLORINE PROD. CORP.  
Tract \_\_\_\_\_ Acres \_\_\_\_\_ Lease No. \_\_\_\_\_  
Well (Farm) No. 13 Serial No. \_\_\_\_\_  
Elevation (Spirit Level) 600.0  
Quadrangle CHARLESTON  
County KANAWHA District LOODON  
Engineer C. R. Smith  
Engineer's Registration No. 941  
File No. \_\_\_\_\_ Drawing No. \_\_\_\_\_  
Date 11/26/40 Scale 1" = 200'

STATE OF WEST VIRGINIA  
DEPARTMENT OF MINES  
OIL AND GAS DIVISION  
CHARLESTON

WELL LOCATION MAP

FILE NO. KAN 767 TO 770 INC.  
WELLS 7, 8, 13, 15 769

+ Denotes location of well on United States Topographic Maps, scale 1 to 62,500, latitude and longitude lines being represented by border lines as shown.

- Denotes one inch spaces on border line of original tracing.



WESTVACO CHLORINE PRODUCTS CORP. NO. 13 SALT WELL.

.....District, Kanawha County, W. Va.  
 By Westvaco Chlorine Products Corp., South Charleston, W. Va.  
 Elevation, 601.3' L.  
 Shooting - Elevation, 927-1135', 260 qts. nitroglycerine; 1314-1395',  
 80 qts. nitroglycerine; 1669-1709', 40 qts. nitroglycerine.  
 North side of plant, back of No. 9 Building.  
 J. T. Gallaspie, Contractor.  
 Record from Martens Sept. 16, 1944. Old File No. 1040.

	Top.	Bottom.		
Clay	0	-	65	
Slate	65	-	115	
Boulders	115	-	120	
Sand	120	-	126	
Slate	126	-	129	
Sand	129	-	134	
Slate	134	-	200	
Sand	200	-	242	
Coal	242	-	245	
Slate	245	-	250	
Sand	250	-	300	
Slate	300	-	365	
Sand	365	-	430	
Slate	430	-	475	
Sand	475	-	505	
Slate	505	-	595	
Sand	595	-	628	
Blue slate	628	-	710	
Sand	710	-	720	
Slate	720	-	735	
Sand	735	-	742	
Slate	742	-	758	
Gas Sand (3,000)	758	-	807	
Black slate	807	-	828	
Salt Sand (dry)	828	-	846	
Salt Sand (pay)	846	-	882	30
Salt Sand (dry)	882	-	927	
Salt Sand (pay)	927	-	1185	258
Salt Sand (dry)	1185	-	1205	
Salt Sand (pay) 0	1205	-	1265	60
Salt Sand (dry)	1314	-	1395	
Red rock, hard	1395	-	1416	
Maxton Sand	1416	-	1440	
Little Lime	1440	-	1477	
Pencil	1477	-	1479	
Big Lime	1479	-	1652	
Slate	1652	-	1669	
Big Injun Sand (pay)	1669	-	1709	
Total depth			1709	

WEST VIRGINIA DEPARTMENT OF MINES  
OIL & GAS DIVISION  
W E L L R E C O R D

Permit No. Kan 769		Salt Brine Well
Charleston Quad.		CASING & TUBING
Company	Westvaco Chlorine Products Corp.	
Address	South Charleston, W.Va.	16      71      71
Farm		13      127      127
Location	Kanawha	10      834      834
Well No	13 Elev. 601.3	
District	Loudon Kanawha County	Oil Well Bottom Hole
Surface	Westvaco Chlorine Products Corp.	Packer
	So. Charleston, W.Va.	Size 16" Rubber
Mineral	Same	Depth 834'
Commenced	1934	
Completed	Feb. 1935	Coal at 242'      36"
Date shot	Feb. 1935	

Clay	0	65	
Slate	65	115	
Boulders	115	120	
Sand	120	126	
Slate	126	129	
Sand	129	134	
Slate	134	200	
Sand	200	242	
Coal	242	245	<i>No 5 Block</i>
Slate	245	250	
Sand	250	300	
Slate	300	365	
Sand	365	430	
Slate	430	475	
Sand	475	505	
Slate	505	595	
Sand	595	628	
Slate	628	710	
Sand	710	720	
Slate	720	735	
Sand	735	742	
Slate	742	758	
Gas Sand	758	807	Gas 758 Est 3,000
Slate	807	828	
Salt Sand Dry	828	846	
Salt Sand Pay	846	882	
Salt Sand Dry	882	927	
Salt Sand Pay	927	1185	
Salt Sand Dry	1185	1205	927-1185 260 qts. Nitroglycerine
Salt Sand Pay	1205	1265	
?	1265	1314	
Salt Sand Dry	1314	1395	1314-1395 80 qts. Nitro glycerine
Red Rock	1395	1416	
Maxon Sand	1416	1440	
Little Lime	1440	1477	
Pencil	1477	1479	
Big Lime	1479	1652	
Slate	1652	1669	
Big Injun-Sand Pay	1669	1709	1669-1709 40 qts. Nitro glycerine

WESTVACO CHLORINE PRODUCTS CORP. NO. 13 SALT WELL.

.....District, Kanawha County, W. Va.

By Westvaco Chlorine Products Corp., South Charleston, W. Va.

Elevation, 601.3' L.

Shooting - Elevation, 927-1135', 260 qts. nitroglycerine; 1314-1395',

80 qts. nitroglycerine; 1669-1709', 40 qts. nitroglycerine.

North side of plant, back of No. 9 Building.

J. T. Gallaspie, Contractor.

Record from Martens Sept. 16, 1944. Old File No. 1040.

	Top.	Bottom.
Clay	0	65
Slate	65	115
Boulders	115	120
Sand	120	126
Slate	126	129
Sand	129	134
Slate	134	200
Sand	200	242
Coal	242	245
Slate	245	250
Sand	250	300
Slate	300	365
Sand	365	430
Slate	430	475
Sand	475	505
Slate	505	595
Sand	595	628
Blue slate	628	710
Sand	710	720
Slate	720	735
Sand	735	742
Slate	742	758
Gas Sand (3,000)	758	807
Black slate	807	828
Salt Sand (dry)	828	846
Salt Sand (pay)	846	882
Salt Sand (dry)	882	927
Salt Sand (pay)	927	1185
Salt Sand (dry)	1185	1205
Salt Sand (pay) 0	1205	1265
Salt Sand (dry)	1314	1395
Red rock, hard	1395	1416
Maxton Sand	1416	1440
Little Lime	1440	1477
Pencil	1477	1479
Big Lime	1479	1652
Slate	1652	1669
Big Injun Sand (pay)	1669	1709
Total depth		1709