

New Location Partially Plugged 9-15-48
 Drill Deeper
 Abandonment issued

559-60 W 54.

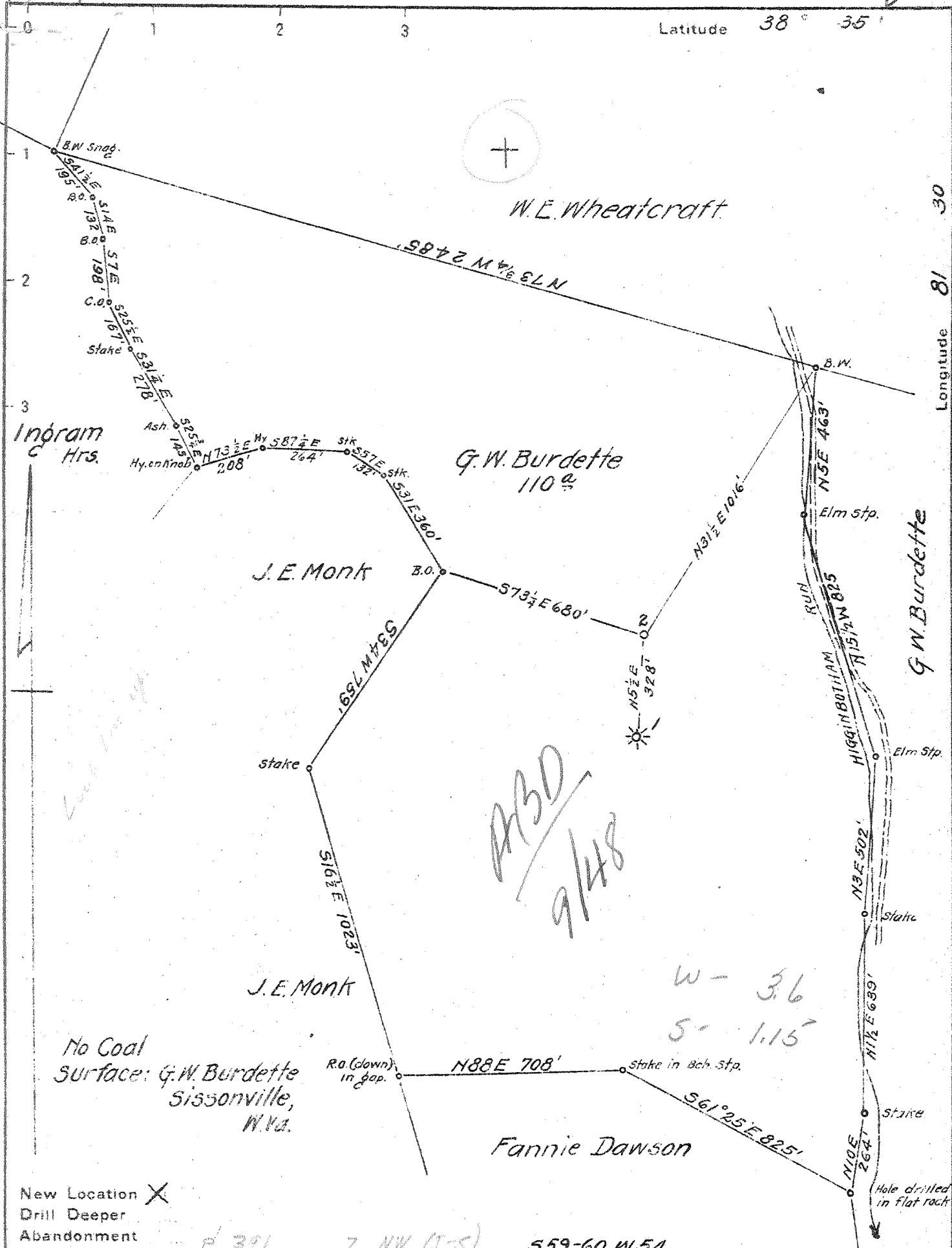
Company	South Penn Natural Gas Co.	
Address	Parkersburg, W. Va.	
Farm	G.W. Burdette	
Tract	Acres 110	Lease No. 79609
Well (Farm) No.	2	Serial No.
Elevation (Spirit Level)	808.86	
Quadrangle	Kenna SE	
County	Kanawha	District Pocahontas
Engineer	E.C. Tabler	
Engineer's Registration No.		
File No.	Drawing No.	
Date	Nov. 29 1940 Scale 1" = 400'	

STATE OF WEST VIRGINIA
 DEPARTMENT OF MINES
 OIL AND GAS DIVISION
 CHARLESTON

WELL LOCATION MAP
 FILE NO. KAN-772-P

+ Denotes location of well on United States Topographic Maps, scale 1 to 62,500, latitude and longitude lines being represented by border lines as shown.

- Denotes one inch spaces on border line of original tracing.



New Location X
 Drill Deeper
 Abandonment

R. 391 7 NW (I-S) 559-60 W.54.

Company	South Penn Natural Gas Co.
Address	Parkersburg, W. Va.
Farm	G.W. Burdette
Tract	Acres 110 Lease No. 79609
Well (Farm) No.	2 Serial No.
Elevation (Spirit Level)	808.86
Quadrangle	Kenna 80
County	Hanawha District Pocahontas
Engineer	E.C. Tabler
Engineer's Registration No.	
File No.	Drawing No.
Date	Nov. 29 1940 Scale 1" = 400'

STATE OF WEST VIRGINIA
 DEPARTMENT OF MINES
 OIL AND GAS DIVISION
 CHARLESTON

WELL LOCATION MAP
 FILE NO. KAN-772

+ Denotes location of well on United States Topographic Maps, scale 1 to 62,500, latitude and longitude lines being represented by border lines as shown.
 - Denotes one inch spaces on border line of original tracing.

Samples 7-F (4936-5123') Deep Well

WEST VIRGINIA DEPARTMENT OF MINES
OIL & GAS DIVISION
W E L L R E C O R D

Permit No. Kan-772
Kenna Quad.

Gas Well

Company South Penn Natural Gas Co.
Address Union Tr. Bldg., Parkersburg, W. Va.
Farm G. W. Burdette ACRES 110
Location Higginbotham Run of Poca River
Well No. 2 ELEV. 808.86
District Poca - Kanawha County
Surface & Mineral G.W. Burdette, Sissonville, W. Va.
Commenced 1/2/41 - completed 5/22/41
Shot 5/23/41 - depth 4961-4977
Open Flow 12/10ths Merc. in 2" op.
Volume 608,000 c.f.
Rock Pressure 630 lbs. 15 hrs.
Salt Water 1245, 1265, 1285, 1720

CASING & TUBING
16 19-2 pulled 7-6
13-3/8 549-9 " 15-10
13-3/8 16-2
10-3/4 1645-10
8-5/8 1849
7 5010

PACKER RECORD:
Steel Shoe 10 1/2 1624' 2/ 6/41
" " 8-5/8 1836 3/27/41
" " 7 O.D 4956 5/ 8/41

4956' of 7" casing cemented.

Clay	50	50	Brown Slate	4560	4900
Sand	50	70	Lime Shell	4900	4903
Slate&Shells	70	125	Black Slate	4903	4936
Sand	125	195	→ Corniferous Lime	4936	5049
Slate	195	210	Oriskany Sand	5049	5092
Red Rock	210	260	Black Lime - 2	5092	5100
Slate	260	270	Total Depth		5100'
Red Rock	270	320			
Lime	320	335	Gas 1672 10/10 W 2" op. -	151,000	c.f.
Slate	335	370	Gas 1678 14/10 W 7" OD -	1,859,000	c.f.
Red Rock	370	410	red. to insf. to test		
Slate	410	420	Gas 1710 36/10 W 7" OD -	2,934,000	c.f.
Red Rock	420	450	red. to insf. to test.		
Slate	450	530	Gas 1716 50/10 W 3" op. -	758,000	c.f.
Red Rock	530	540	Oil & Water 1716 -	30 ft.	fluid
Lime Shells	540	583	Water 1720 -	1/2 blr.	pr hr.
Sand	583	612	Gas 3830 -	Insf. to test	
Slate	612	615	Gas 5064 14/10 W 1" op. -	44,000	c.f.
Sand	615	765	Gas 5064-5067 14/10 M 2" op. -	657,000	c.f.
Slate&Shells	765	810	Gas 5067-5070 18/10 M 2" op. -	745,000	c.f.
Sand	810	826	Gas reduced		
Slate&Shells	826	973	5070-5100 to 12/10 M 2" op.	608,000	c.f.
Sand	973	1030			
Slate& Shells	1030	1143			
Sand	1143	1155			
Slate&Shells	1155	1217			
• Salt Sand	1217	1539	Sh. Oil	1231	
Slate	1539	1543	SW	1245	1BPH
Lime	1543	1560	SW	1265	HF
Slate	1560	1570	SW	1285	
• Lime	1570	1609			
• Slate	1609	1612			
• Big Lime	1612	1761			
Shut down, well feeding gas temporarily					
• Big Injun	1761	1810			
Slate	1810	1830			
Slate&Shells	1830	1950			
Slate	1950	2223			
→ Berea Sand	2223	2227			
Slate&Shells	2227	3445			
Black Shale	3445	3510			
Lime Shells	3510	3630			
Slate&Shells	3630	3740			
Brown Shale	3740	4040			
White Slate	4040	4250			
Dark Slate	4250	4320			
White Slate	4320	4388			
Sand	4388	4400			
White Slate	4400	4560			

CLOSED PRESSURE TEST:

	MINUTES									
Opg.	1	2	3	4	5	10	1hr.	Lb.	Hrs.	
7"OD	0	0	0	0	20	60	340	630	15	
24#										

4936 5049 5092
 809 809 809

 4127 4240 4283