



WEST VIRGINIA DEPARTMENT OF MINES  
OIL & GAS DIVISION  
W E L L R E C O R D

Permit No. Kan-785  
Charleston Quad.

Gas Well

Company	Columbian Carbon Co.	CASING & TUBING	16	48-6	48-6
Address	Box 1240, Charleston, W. Va.	10-3/4	391-4	324-7	
Farm	Shelby T. Jones, et al ACRES 109	8-5/8	1753-1	1753-1	
Location	Huggards Fork	7	4804-5	4804-5	
Well No.	1 (GW-471) ELEV. 797.9 DF	2-3/8	4968-7	4968-7	
District	Poca - Kanawha County	3	61-9	61-9	
Surface	Louisa Spencer, Legg, W. Va.				
Mineral	Ida May Jones, et al, Legg, W. Va.	No packer			
Commenced	Feb. 13, 1941				
Completed	May 10, 1941				
Shot	5/11/41 - depth 4872 SLM 4947 SLM				
Volume	2,893,000 c.f.				
Rock Pressure	540 lbs. 4 days				
Fresh Water	80 - 1/2-15" blr. ev. 2 hrs.				
	440 1-10 blr. per hr.				
Salt Water	1040- 5-10 blr. per hr. 1085 HF				

Red Rock	0	30	
Blue Mud & Lime	30	40	
Sand	40	100	FW 80
Slate	100	115	
Red Rock	115	183	
Sand	183	210	
Slate	210	220	
Sand	220	225	
Slate&Shells	225	290	
Sand	290	325	
Slate	325	377	
Sand	377	400	
Slate	400	410	
Sand	410	450	FW 440
Slate&Shells	450	505	
Sand	505	550	
Slate&Shells	550	590	
Sand	590	625	
Slate	625	652	
Slate&Shells	652	700	
Sand	700	770	
Slate&Shells	770	890	
-Salt Sand	890	1395	SW 1040
Slate	1395	1406	
-Sand	1406	1457	HFSW 1085
-Little Lime	1457	1490	
-Pencil Cave	1490	1500	
-Big Lime	1500	1648	
-Big Injun Sand	1648	1705	
Slate	1705	1712	
Black Lime	1712	1820	
Slate	1820	1878	
Slate&Shells	1878	2007	
-Borea Shell	2007	2012	Gas 2009
			Show
Slate&Shells	2012	2158	
Lime	2158	2168	
Slate&Shells	2168	2560	
White Slate	2560	3050	
Slate & Shells	3050	3323	
Shale & Shells	3323	3485	
Slate	3485	3635	
Brown Shale	3635	3655	
Slate	3655	3760	
Brown Shale	3760	3920	
White Slate	3920	4420	
Brown Shale	4420	4500	

White Slate	4500	4520
Brown Shale	4520	4670
White Slate	4670	4705
Brown Shale	4705	4762 SLM
- Corniferous Lime	SLM4762	4874 CSIM
Oriskany Sand	CSIM4874	4920
Lime Break	4920	4932
Oriskany Sand	4932	4947 SLM
-Black Lime - #	SLM 4947	4953
Total Depth		4953

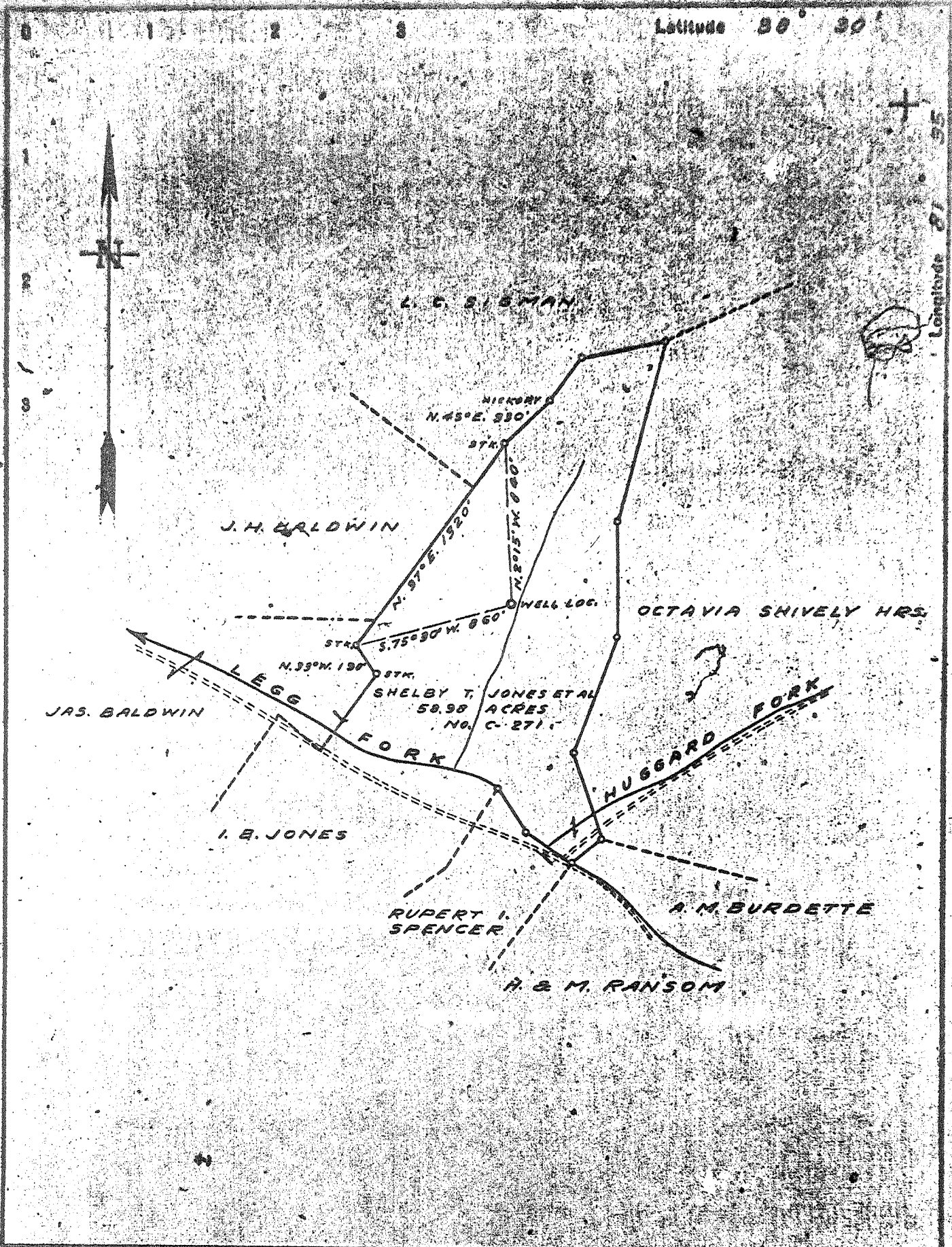
PAYS: 4878-90; 4899-4900; 4913-14

CASING RECORD:

3/20/41 Cemented 8-5/8 casing. Ran 110 sacks Alpha cement mixed with 1 sack Aquagel. Ran 9 sacks Aquagel mixed with 1 sack Fibertex ahead of cement. Pulled pipe up 30' and worked up and down and set back on bottom. 12' cement in pipe. F. M. Mills, Cementer - Halliburton Oil Well Cementing Co.

4/25/41 - Cemented 7" casing. Ran 12 sacks Alpha cement in dump bailer. Picked up and set back on bottom. 45' cement in hole. Cemented by Columbian Carbon Co. Crew.

4762	4874	4947
798	798	798
3964	4076	4149



Company	COLUMBIAN CARBON CO.
Address	BOX 1240 - CHARLESTON - W. VA.
Farm	SHELBY T. JONES, ET AL
Tract	Acres 58.98 Lease No. C-271
Well (Farm) No.	1 Serial No.
Elevation (Spirit Level)	809.0
Quadrangle	CHARLESTON - N.E.
County	KANAWHA District ROCA
Engineer	James N. Sell
Engineer's Registration No.	772
File No.	Drawing No.
Date	APRIL 16, '37 Scale 1" = 660'

STATE OF WEST VIRGINIA  
DEPARTMENT OF MINES  
OIL AND GAS DIVISION  
CHARLESTON

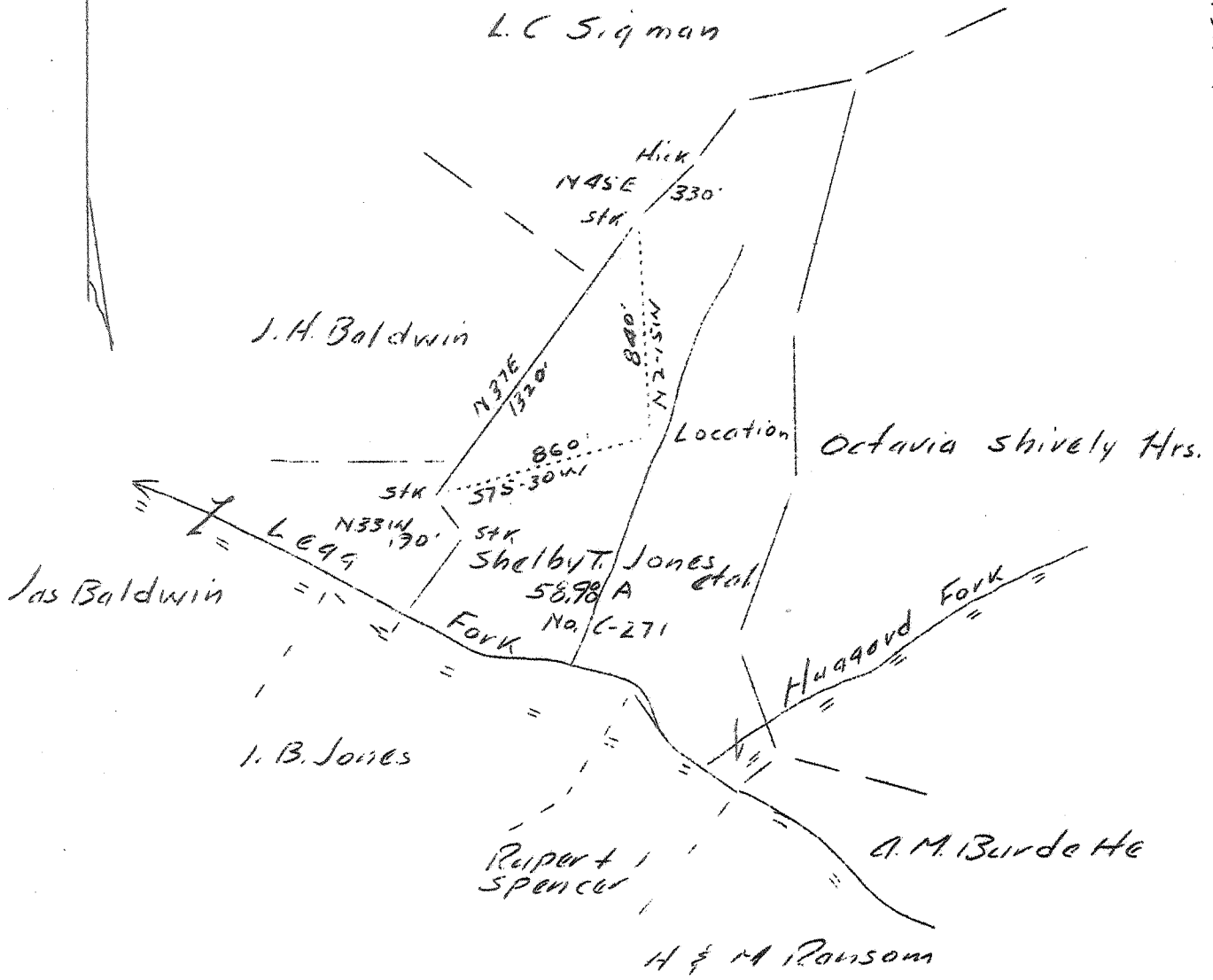
**WELL LOCATION MAP**  
FILE NO. KAN-367 <sup>now 785</sup>  
*Drilling Cancelled*

• Denotes location of well on United States Topographic Maps, scale 1 to 62,500, latitude and longitude lines being represented by border lines as shown.

• Denotes one inch spaces on border line of original tracing.

0 1 2 3 LATITUDE 38° 30'

1 2 3 LONGITUDE 81° 35'



*Dredging 1927*

0.35 W  
0.77 R

Company Columbian Carbon Co  
 Address Box 1240, Charleston, W. Va.  
 Farm Shelby T. Jones, et al  
 Tract Acres 58.98 Lease No. C-271  
 Well (Farm) No. 1 Serial No. \_\_\_\_\_  
 Elevation (Spirit Level) 809.0  
 Quadrangle Charleston - N. E. **NE**  
 County Kanawha District Poca  
 Engineer James N. Sell  
 Engineer's Registration No. 772  
 File No. \_\_\_\_\_ Drawing No. \_\_\_\_\_  
 Date 4-16-37 Scale 1" = 660'

STATE OF WEST VIRGINIA  
 Department of Mines  
 OIL AND GAS DIVISION  
 Charleston

WELL LOCATION MAP  
 File No. KAN-367  
*Cancelled - renewed as Kan. 785*  
 + Denotes location of well on U. S. Topographic Maps, scale 1" to 62,500 latitude and longitude lines being represented by border lines as shown  
 - Denotes one inch spaces on border line of original tracing.