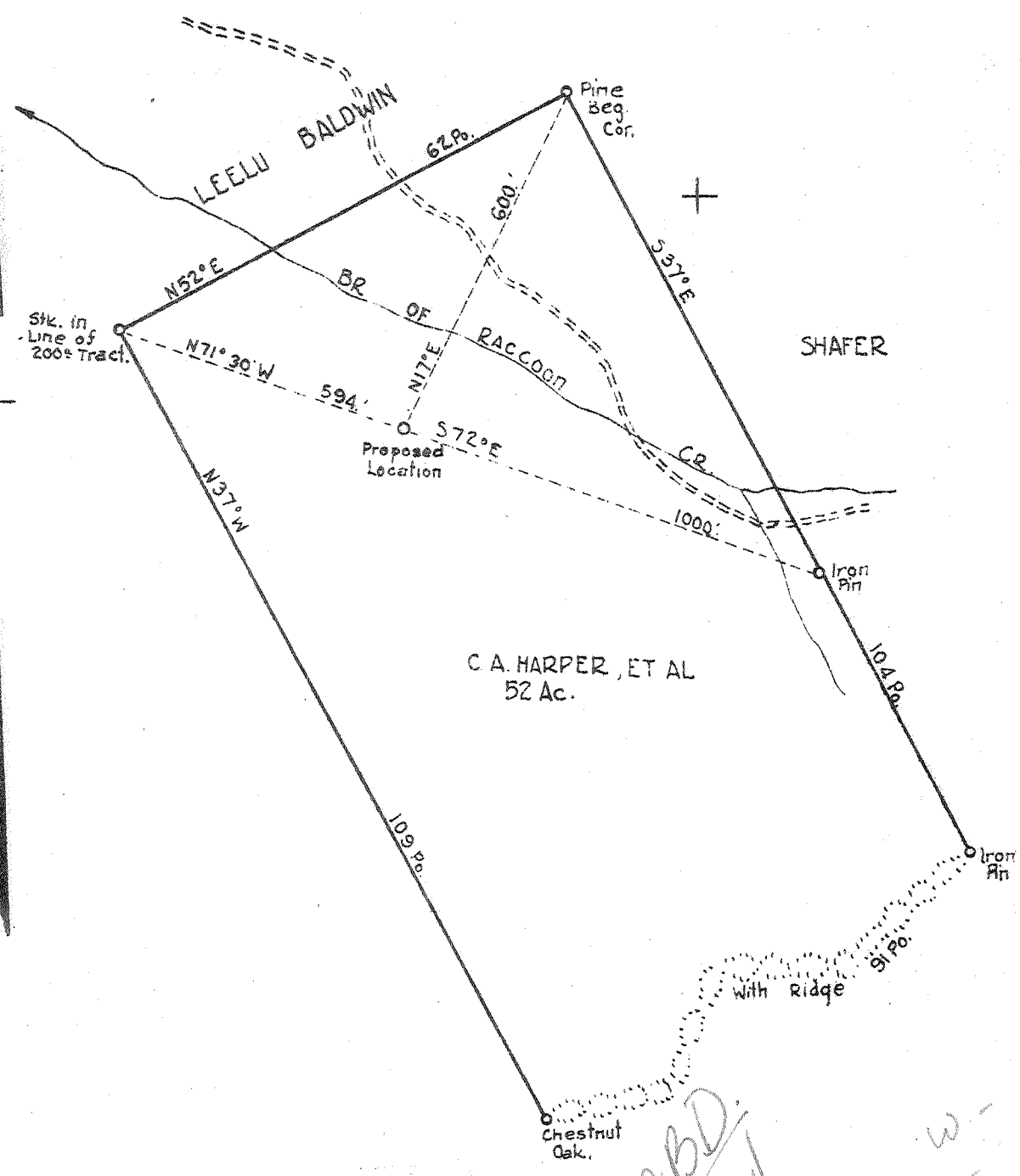


$\frac{3353.75' \times 15}{37^{\circ}32'30'' \cdot 235} = 3115$   
 $\frac{3115}{81^{\circ}30'30'' \cdot 682} = 2.932$   
 2.932  
 2.932

Latitude 38 35

Longitude 81 30

United Fuel Well



New Location  X  
 Drill Deeper   
 Abandonment

Company HAYS OIL & GAS CO.  
 Address CLENDENIN, W. VA.  
 Farm C. A. HARPER, ET AL  
 Tract \_\_\_\_\_ Acres 52 Lease No. \_\_\_\_\_  
 Well (Farm) No. ONE Serial No. \_\_\_\_\_  
 Elevation (Spirit Level) 995 960-7.6' topo. KMA 12/1/87  
 Quadrangle KENNA - SE  
 County KANAWHA District DOCA  
 Engineer A. E. PRICE  
 Engineer's Registration No. 819  
 File No. \_\_\_\_\_ Drawing No. \_\_\_\_\_  
 Date 1/16/41 Scale 1" = 20 PO.

STATE OF WEST VIRGINIA  
 DEPARTMENT OF MINES  
 OIL AND GAS DIVISION  
 CHARLESTON

WELL LOCATION MAP  
 FILE NO. KAN-786

+ Denotes location of well on United States Topographic Maps, scale 1 to 62,500, latitude and longitude lines being represented by border lines as shown.

- Denotes one inch spaces on border line of original tracing.

ABD.  
 2/1/44

W - 2.87  
 S - 2.82

DEEP

WEST VIRGINIA DEPARTMENT OF MINES  
OIL & GAS DIVISION  
W E L L R E C O R D

Permit No, Kan-786					Gas Well
Company	Hays Oil & Gas Co. Inc.				Casing & Tubing
Address	Clendenin, W.Va.				
Farm	D.M. Shaffer	Acres 52		10	613
Location	Coon Creek			8 1/2	1787
Well No.	1	Elev. 995		7" OD	4888
District	Poca	Kanawha County		1 1/2	5018
Surface	D.M. Shaffer, Charleston, W.Va.				
Mineral	C.A. Harper, N.N. Snyder, Leo Joplin, et. als				
Commenced	2-18-41				
Completed	5-26-41				
Shot	5-27-41      Depth 4989-5019'				
Flow	19/10ths M 2"				
Volume	1,000,000 C.F.				
Rock Pressure	325#      12 hrs.				
Salt Water	1130'				

CASING CEMENTED:  
7" O D    and  
8 5/8"

Clay	0	12	
Sand	12	100	
Red Rock	100	110	
Blue Rock	110	125	
Sand	125	305	
Red Rock	305	325	
Blue Slate	325	380	
Sand	380	425	
Blue Slate	425	480	
Sand	480	560	
Slate	560	570	
Sand	570	600	
Slate	600	760	
Sand	760	785	
Slate	785	795	
Sand	795	817	
Slate	817	850	
Sand	850	928	
Slate	928	1040	
Sand	1040	1065	
Slate	1065	1120	
-Salt Sand	1120	1595	
-Big Lime	1595	1727	
-Injun Sand	1727	1776	
Slate	1776	1783	
Lime Shell	1783	1790	
Slate & Shells	1790	2610	
Grey Lime	2610	2640	
Slate & Shells	2640	3345	
White Lime	3345	3700	
Brown Shale	3700	3749	
Slate & Shells	3749	3840	
Brown Shale	3840	4000	
S.&S White	4000	4450	
Brown Shale	4450	4760	
White Slate	4760	4790	
Brown Shale	4790	4872	
-Corniferous	4872	4980	SLM -Oriskany Sand-Top 4980
-Oriskany	4980	5019	Showing of Gas 4989
Grey Lime	5019	5065	Showing of Gas 3887
			Shot with 120 qts.