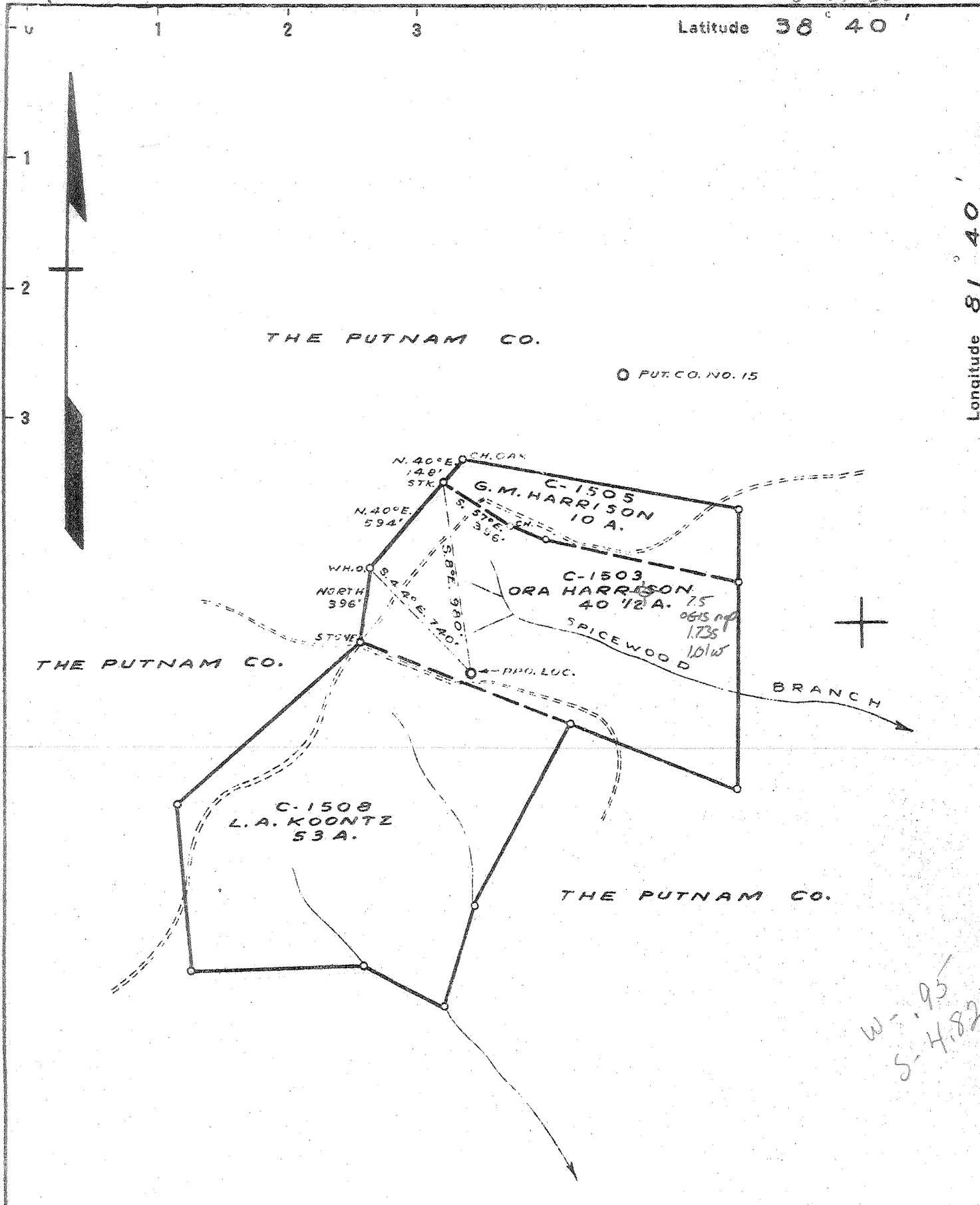


38° 37' 30" P

Latitude 38° 40'

Longitude 81° 40'



THE PUTNAM CO.

PUT. CO. NO. 15

THE PUTNAM CO.

THE PUTNAM CO.

- New Location
- Drill Deeper
- Abandonment

LOC. 15 IS 1.9 MILES S.W. GOLDTOWN

Company COLUMBIAN CARBON CO.
 Address BOX 1240 - CHARLESTON - W. VA.
 Farm ORA HARRISON ET AL
 Tract C-1503, C-1505 Acres 103 1/2 Lease No. & C-1508
 Well (Farm) No. ONE Serial No. _____
 Elevation (Spirit Level) 1038.9
 Quadrangle KENNA S.W. (4)
 County KANAWHA District POCA
 Engineer J. Sell
 Engineer's Registration No. 772
 File No. _____ Drawing No. _____
 Date JAN. 29, 1941 Scale 1" = 660'

STATE OF WEST VIRGINIA
 DEPARTMENT OF MINES
 OIL AND GAS DIVISION
 CHARLESTON

WELL LOCATION MAP
 FILE NO. KAN-788

+ Denotes location of well on United States Topographic Maps, scale 1 to 62,500, latitude and longitude lines being represented by border lines as shown.
 - Denotes one inch spaces on border line of original tracing.

W = .95
 S = 4.82

Deepwell

WEST VIRGINIA DEPARTMENT OF MINES
OIL & GAS DIVISION
W E L L R E C O R D

Permit No. Kan-788
Kenna Quad.

Gas Well

Company Columbian Carbon Co.
Address Box 1240, Charleston, W. Va.
Farm Ora Harrison, et al ACRES 103-1/2
Location Spicewood Branch
Well No. 1 ELEV. 1043.6
District Poca - Kanawha County
Surface & Mineral Ora Harrison, et al, Sissonville, W. Va.
Commenced 2/24/41 - completed 5/26/41
Shot Not shot
Volume 3,181,000 c.f.
Rock Pressure 1280 lbs. 37 hrs.
Oil Show at 5300'
Fresh Water 1310 - 2 BPH
Salt Water 1725 - hole full

CASING & TUBING
16 29 29
10-3/4 1055-1 1055-1
8-5/8 2285-5 2285-5
7 5198-10 5198-10
2-3/8 5335-2 5335-2

No packer

Red Rock	0	25	Salt Sand	1698	2087	HPW 1725
Mt. Sand	25	38	Big Lime	2087	2176	
Red Rock	38	80	Slate&Shells	2176	2186	
Sand	80	115	Big Injun Sand	2186	2227	
Red Rock	115	145	Slate&Shells	2227	2245	
Limo	145	160	Squaw Sand	2245	2252	
Red Rock	160	190	Slate&Shells	2252	2638	
Sand	190	220	Brown Shale	2638	2651	
Slate	220	238	Berea Grit	2651	2664	Gas 2653
Red Rock	238	376	Slate & Shells	2664	4265	Show
Slate	376	396	Shale & Lime	4265	4329	
Sand	396	415	Brown Shale	4329	4470	
Red Rock	415	460	White Slate	4470	4860	
Sand	460	480	Shale	4860	5147	SLM
Red Rock	480	518				Gas 5060
Slate&Shells	518	580				Show
Sand	580	595	Corniferous Lime	SLM 5147	5243	SLM
Pink Rock	595	610	Oriskany Sand	SLM 5243	5290	
Slate&Shells	610	695	Lime	5290	5301	Oil 5300
Red Rock	695	710	Oriskany Sand	5301	5325	show
Lime	710	730	Lime - held	5325	5328	
Slate&Shells	730	745	Total Depth		5328	
Sand	745	770				
Slate&Shells	770	800				
Red Rock	800	835				
Slate&Shells	835	885				
Sand	885	900				
Slate	900	910				
Black Slate	910	918				
Lime	918	936				
Red Rock & Shells	936	980				
Slate&Shells	980	1012				
Black Slate	1012	1022				
Slate	1022	1038				
Sand	1038	1118				
Slate&Shells	1118	1138				
Sand	1138	1195				
Slate&Shells	1195	1292				
Sand	1292	1335	W 1310 2BPH			
Slate&Shells	1335	1420				
Sand	1420	1445				
Slate&Shells	1445	1468				
Sand	1468	1498				
Slate&Shells	1498	1605				
Lime Shell	1605	1628				
Slate&Shells	1628	1640				
Sand	1640	1665				
Slate	1665	1675				
Lime	1675	1693				
Slate	1693	1698				

PAYS: 5248-56; 5275-78

CEMENT RECORD:

3/21/41 Aquagelled 10-3/4 csg. Cleaned out 5' of cavings and ran 1 bag of Fibrotex and 25 bags of Aquagel mixed to a 6% solution. Ran plug within 20' of bottom - no return. F. M. Mills, Cementer - Halliburton Oil Well Cementing Co.
4/10/41 Cemented 8-5/8 csg. Ran 15 sacks of Aquagel, mixed 6% solution, then ran 123 sacks of cement mixed with 2 sacks of Aquagel and 1 sack Fibrotex. Piced pipe up 3'; worked up and down after cement started around shoe. Ran 10' spacer nailed to bottom of plug following cement. Plug stopped 187' off bottom at 2083'. Held 1000# pressure against plug for 1 hour. 185' solid cement in hole. F. M. Mills, Cementer, Halliburton Oil Well Cementing Co.
5/15/41 Ran 12 sacks of Alpha cement in dump bailer. Picked pipe up and set back on bottom. Cemented by Columbian Carbon Co. Drew. 45' solid cement in hole.

5325
1038
5280

5147 5243 5325
1044 1044 1044
4103 4199 4281