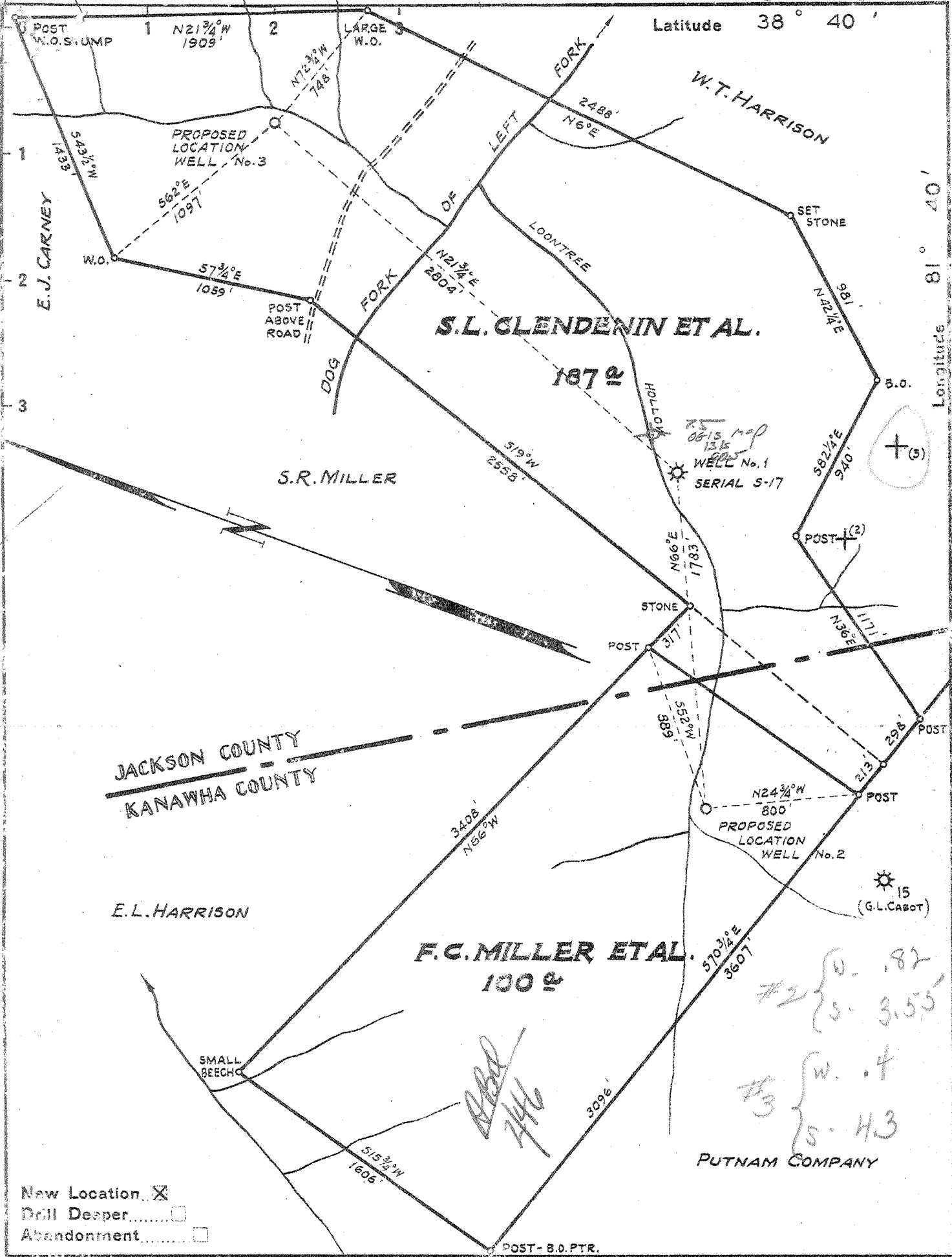


38° 37' 30"

Latitude 38° 40'

Longitude 81° 40'



- New Location
- Drill Deeper
- Abandonment

Company SPARTAN GAS COMPANY
 Address KANAWHA VALLEY BLDG, CHARLESTON, W.VA.
 Farm S.L. CLENDENIN ET AL.
 Tract _____ Acres 287 Lease No. _____
 Well (Farm) No. TWO Serial No. S-20
THREE Serial No. S-21
 Elevation (Spirit Level) 2 - 746.0 RIG FLOOR
3 - 689.4 GROUND
 Quadrangle KENNA SW
2 - KANAWHA POCA
 County 3 - JACKSON District RIPLEY
 Engineer Robert S. Hyde
 Engineer's Registration No. 646
 File No. _____ Drawing No. _____
 Date FEBRUARY 24, 1941 Scale 1 INCH = 660 FEET

STATE OF WEST VIRGINIA
 DEPARTMENT OF MINES
 OIL AND GAS DIVISION
 CHARLESTON

WELL LOCATION MAP
 FILE NO. KAN-793-JAC-122
 WELLS 2

- + Denotes location of well on United States Topographic Maps, scale 1 to 62,500, latitude and longitude lines being represented by border lines as shown.
- Denotes one inch spaces on border line of original tracing.

WEST VIRGINIA DEPARTMENT OF MINES
OIL & GAS DIVISION
W E L L R E C O R D

Permit No. Kan-793
Kenna gW Quad.

Gas Well

Company	Spartan Gas Company	Casing & Tubing
Address	518 Kanawha Valley Bldg., Chas. W. Va.	16 22
Farm	S. L. Clendenin et al Acres 287	13- 7 8 160 Pulled
Location	Dog Fork	10 1 853 Pulled
Well No.	2	2- 5 8 1948' 6"
District	Poca Kanawha County	7" 4918'
Surface	S. L. Clendenin et al, Kenna, W. Va.	2-3/8 4941
Commenced	March 1, 1941	Cemented 7" 5/5/41
Completed	May 18, 1941	4878 SLM 20 Sacks cement
Date Shot	5-19-41 Depth Top 4967 Bot. 5047	
Flow	Before Shot 7" 22#-862,000	
	After Shot 1 hr. 30 min 7" 23#	
Volume	3,626,000 Cu.Ft.	
Rock Pressure	1375# 36 hrs.	

Surface	0	10	
Rock	10	30	
Red Rock	30	45	
Blue Slate	45	60	
Red Rock	60	75	
Slate	75	125	
Slate & R. R.	;25	215	
Sand	215	235	
Red Rock	235	250	
Slate	250	490	
Red Rock	490	550	
Slate	550	585	
Sand	585	605	
Red Rock	605	730	
Blue Slate	730	780	
Sand	780	850	
Slate	850	930	
Sand	930	1075	
Slate	1075	1105	
Sand	1105	1220	
Slate	1220	1370	
-Salto Sand	1370	1804	Water 1430
-Big Lime	1805	1880	Hole Full Water 1480
-Injun Sand	1880	1916	
Slate	1916	1922	
-Squaw Sand	1922	1930	
Slate	1930	2345	
-Brown Shale	2345	2355	
-Berea Sand	2355	2367	
Slate & Shells	2367	2950	
Slate	2950	3540	
Slate & Shells	3540	3952	
Brown Shale	3952	4161	
White Slate	4161	4550	
Brown Shale	4550	4863	
-Corniferous Lime	4863	4966	SLM 4878
-Oriskany Sand	4966	5007	Casing Point
Lime - 022	5007	5020	
Sand - 022	5020	5045	
-Lime - 4	5045	5047	
Total Depth		5047	Gas 4971-4979 1,494,000