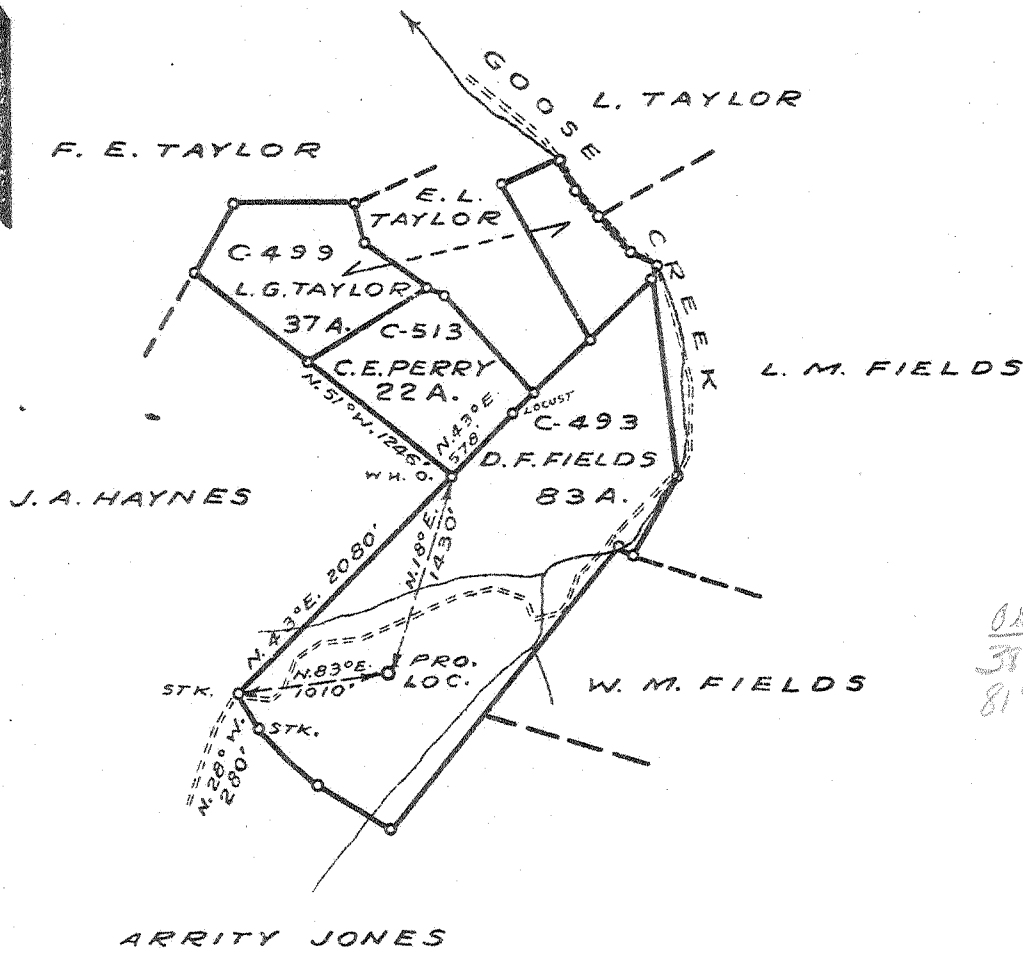


Latitude 38° 35'

Longitude 81° 30'



$\frac{0.415 \times 75' \text{ loc}}{37'35''} = 2.035$ $\frac{15'}{2.035} = 7.37$
 $\frac{81'36''}{.390} = 209.5$ $\frac{15'}{.390} = 38.5$
 W. 1.48
 S. 2.1

New Location
 Drill Deeper
 Abandonment

LOCATION 1.2 MI. N.E. BLUNDON

Company COLUMBIAN CARBON CO.
 Address BOX 1240 - CHARLESTON - W. VA.
 Farm D. F. FIELDS ET AL
 Tract C-499 C-513 Acres 142 Lease No. C-499
 Well (Farm) No. ONE Serial No. _____
 Elevation (Spirit Level) 1042.1
 Quadrangle KENNA S.E. (7)
 County KANAWHA District POCA
 Engineer J. M. Sell
 Engineer's Registration No. 772
 File No. _____ Drawing No. _____
 Date MARCH 13, '41 Scale 1" = 1320'

STATE OF WEST VIRGINIA
 DEPARTMENT OF MINES
 OIL AND GAS DIVISION
 CHARLESTON

WELL LOCATION MAP
 FILE NO. KAN-795

+ Denotes location of well on United States Topographic Maps, scale 1 to 62,500, latitude and longitude lines being represented by border lines as shown.

- Denotes one inch spaces on border line of original tracing.

WEST VIRGINIA DEPARTMENT OF MINES
OIL & GAS DIVISION
W E L L R E C O R D

Permit No. Kan-795

Gas Well

Company	Columbian Carbon Company	Casing & Tubing		
Address	Box 1240, Charleston, W. Va.	14" 44'0" 44'0"		
Farm	D. F. Fields, et al Acres 142	10 1/2" 704' 2" Pulled		
Location	Goose Creek	8-5/8" 2054' 4" 2054' 4"		
Well No.	1 (GW-480)	Elev. 1044.57" 5251' 6" 5251' 6"		
District	Poca Kanawha County	2-3/8" 5393' 10" 5393' 10"		
Surface	D. F. Fields, et al, Sissonville, W. Va.	Liners Used		
Commenced	4-11-41	3 1/2" 93' 2" 93' 2"		
Completed	7-31-41			
Shot	7-31-41	Depth 5345' SLM 5385' SLM		
Volume	5,512M			
Rock Pressure	1515 lbs. 9 days			
Fresh Water	880' Show			
Salt Water	1485' 2-10 BPH 1525' Hole Full			

Soil	0	20
Slate	20	34
Sand	34	55
Slate	55	65
Sand	65	135
Slate	135	250
Red Rock	250	278
Lime	278	295
Red Rock	295	350
Slate	350	360
Red Rock	360	474
Shale	474	525
Red Rock	525	545
Shale	545	585
Sand	585	636
Slate	636	660
Sand	660	675
Slate	675	685
Sand	685	880
Shale	880	1005
Sand	1005	1055
Lime	1055	1075
Slate	1075	1120
Sand	1120	1150
Slate	1150	1174
Lime	1174	1215
Slate	1215	1300
Sand	1300	1326
Lime	1326	1346
Slate	1346	1356
Lime	1356	1370
Sand	1370	1435
Salt Sand	1435	1665
Slate	1665	1670
Lime	1670	1675
Sand	1675	1785
Little Lime	1785	1813
Slate	1813	1818
Big Lime	1818	1975
Big Injun Sand	1975	2005
Slate & Shells	2005	2040
Black Lime	2040	2050
Slate & Shells	2050	2246
Lime Shell	2246	2258
Slate & Shells	2258	3150
Slate	3150	3425
Slate & Shells	3425	4100
Brown Shale	4100	4310
Slate	4310	4820
Brown Shale	4820	5100
White Slate	5100	5125
Black Shale	5125	5206
Corniferous Lime	5206	5325

Oriskany Sand	5325	5369
Black Lime	5369	5379
Oriskany Sand	5379	5402
Lime - H	5402	5409 SLM
Pays: 5345-52; 5380-83		
Total Depth		5409 SLM

Cement Record:

4-20-41 Aquagelled 10 1/2" casing. Ran 16 sacks Aquagel mixed with 1 bail Fibrotex. Ran plug on top aquagel. Circulation at 450 S.K. Johnson, Cementer- Haliburton Oil Well Cementing Co.

5-19-41 Cemented 8-5/8" casing. Ran 90 sacks Alpha cement mixed with 2 sacks of Aquagel. Ran 10' spacer and plug on top of cement. Pipe lacked 4" going to bottom after cementing. 30' solid cement in hole. S.K. Johnson, Cementer. Halliburton Oil Well Cementing Co.

7-4-41 Cement squeeze job on 8-5/8". Set bridge at 937'. Filled up to 835'. Ran 25 sacks Alpha cement. Ran plug to 708'. 140' cement in hole. M.C. Mills, Cementer. Halliburton Oil Well Cementing Co.

7-9-41 Line cut pipe. Pipe ripped from 801' to 806'. Ran 25 sacks Alpha cement after filling back to 815'. Ran plug on top of cement and pumped plug down to 775'. M.C. Mills, Cementer, Halliburton Oil Well Cementing Co.

7-17-41 Cemented 7" casing. Dumped 10 sacks Alpha cement on bottom with dump bailer. Picked pipe up and set back on bottom. 50' cement in hole. Columbian Carbon Crew.