

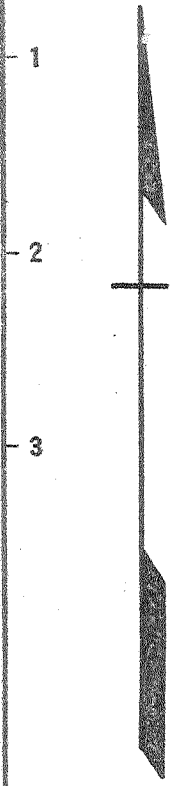
M

38° 37' 30" P

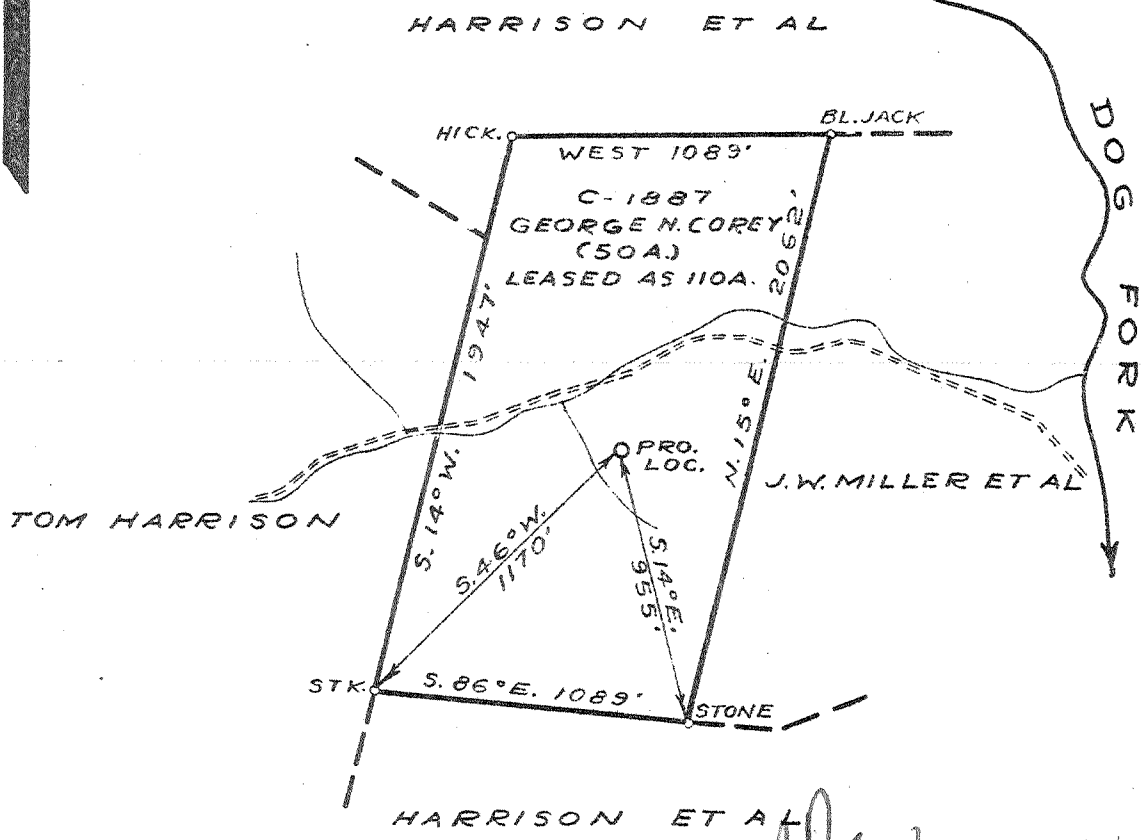
1 2 3

Latitude 38 40

Longitude 81 40



75
0615 mag
-625
1.37 W



ASD
7/48

W-1.4
S-3.63

New Location
 Drill Deeper
 Abandonment

P. 407 4 EC (I-5) LOCATION 1.7 M. S.E. OF EMMA

Company COLUMBIAN CARBON CO.
 Address BOX 1240 - CHARLESTON - W.VA.
 Farm GEORGE N. COREY
 Tract _____ Acres 110 Lease No. C-1887
 Well (Farm) No. ONE Serial No. _____
 Elevation (Spirit Level) 832.1
 Quadrangle KENNA S.W. Q. (4)
 County KANAWHA District POCA
 Engineer J. McCall
 Engineer's Registration No. 772
 File No. _____ Drawing No. _____
 Date 4-11-41 Scale 1" = 660'

STATE OF WEST VIRGINIA
 DEPARTMENT OF MINES
 OIL AND GAS DIVISION.
 CHARLESTON

WELL LOCATION MAP
 FILE NO. KAN-807

+ Denotes location of well on United States Topographic Maps, scale 1 to 62,500, latitude and longitude lines being represented by border lines as shown.

- Denotes one inch spaces on border line of original tracing.

Deep Well

WEST VIRGINIA DEPARTMENT OF MINES
OIL AND GAS DIVISION
W E L L R E C O R D

Permit No. Kan-807

Kenna Quad.

Company

Address

Farm

Location

Well No.

District

Surface

Mineral

Commenced

Completed

Shot

Volume

Rock Pressure

Salt Water

Columbian Carbon Company

Box 1240, Charleston, W. Va.

George N. Corey Acres 110

Dog Fork of Poca River

1 (GW-486) Elev. 836.108-56

Poca, Kanawha County

Paobe Miller et al, Columbian Carbon,

George N. Corey et al., " " 2-36

5-7-41

7-17-41

7-18-41 Depth 5042-5112

3,559Mcf

1580# 14 days

915' 1-9 1/2 BPH; 978' 1 1/2-9 1/2 BPH; 1580'

Hole full; 1678' Hole Full

Gas Well

Casing & Tubing

16' 21' 0" 21' 0"

10 1/2" 864' 11" 535' 2"

10 1/2" 2080' 4" 2080' 4"

7" 5003' 11" 5003' 11"

2-3/8" 5053' 5053'

Surface	0	5	Squaw Sand	2020	2025
Sand	5	30	Slate	2025	2062SLM
Slate	30	65	Lime	2062	2070
Red Rock	65	115	Slate & Shells	2070	2210
Sand	115	120	Shale	2210	2450
Red Rock	120	140	Lime	2450	2470
Slate, sandy	140	160	Slate & Shells	2470	2480
Red Rock	160	205	Sandy Lime	2480	2490
Grey sand	205	230	Slate	2490	2520
Red Rock	230	265	Lime	2520	2545
Green Shale	265	290	Shells	2545	2760
Red Rock	280	335	Lime	2760	2810
Slate	335	395	Slate	2810	3032
Red Rock	395	400	Black Lime	3032	3052
Sand	400	415	Slate	3052	3695
Lime	415	425	Brown Shale	3695	3750
Shale	425	460	Slate	3750	4590
Sandy Lime	460	475	Brown Shale	4590	4710
Slate	475	505	Black Shale	4710	4800
Red Rock	505	525	Brown Shale	4800	4941SLM
White Slate	525	535	→ Cornif. Lime	4941	5035SLM
Sand	535	555	Criskany Sand	5035	5083
White Slate	555	580	Lime - H	5083	5120 5098
Sand	580	595	Sand - H	5120	5134
Red Rock	595	650	Lime - H	5134	5134
Sand	650	670	Pays: 5042-50; 5067-70; 5089-5108		
Red Rock	670	680	Total Depth	5134	
Lime	680	685	Cement Record: 5-15-41 Mudded 10 1/2" Csngr.		
Slate, hard	685	730	Dumped 10 nails of red mud in hole. Set		
Sand	730	745	Pipe back down in mud.		
Lime	745	760	6-2-41 Cemented 8-5/8" csng. Ran 74 sacks		
Grey shale	760	780	Alpha cement and 2 sacks Aquagel mixed		
Brown Shale	780	800	together. Circulation at 350'. No cavings.		
Sand	800	815	Pipe lacked 1' going to bottom after cement-		
Slate	815	841	ing. 10' cement in hole.		
Sand	841	845	7-7-41 Cemented 7" csng. Ran 12 sacks Sup.		
Slate & Shells	845	847	cement in dump Bailer. Cleaned out 7' of		
Sand	847	980SW.915'	cavings. Set pipe back on bottom. 55' cem.		
Slate	980	1180SW.978'	in hole		
Lime Shells	1180	1195			
Lime	1195	1205			
Sand	1205	1245			
Slate	1245	1260			
Sand	1260	1310			
Dark Shale	1310	1370			
Sandy Lime	1370	1380			
Slate	1380	1478			
Salt Sand	1478	1910SW.1580'			
Big Lime	1910	1930SW.1678'			
Slate	1930	1935			
Big Lime	1935	1945			
Slate	1945	1955			
Big Injun	1955	2005			
Slate	2005	2020			

Barea 2400 ±

4941 5035 5120
 836 836 836

 41054199 4284