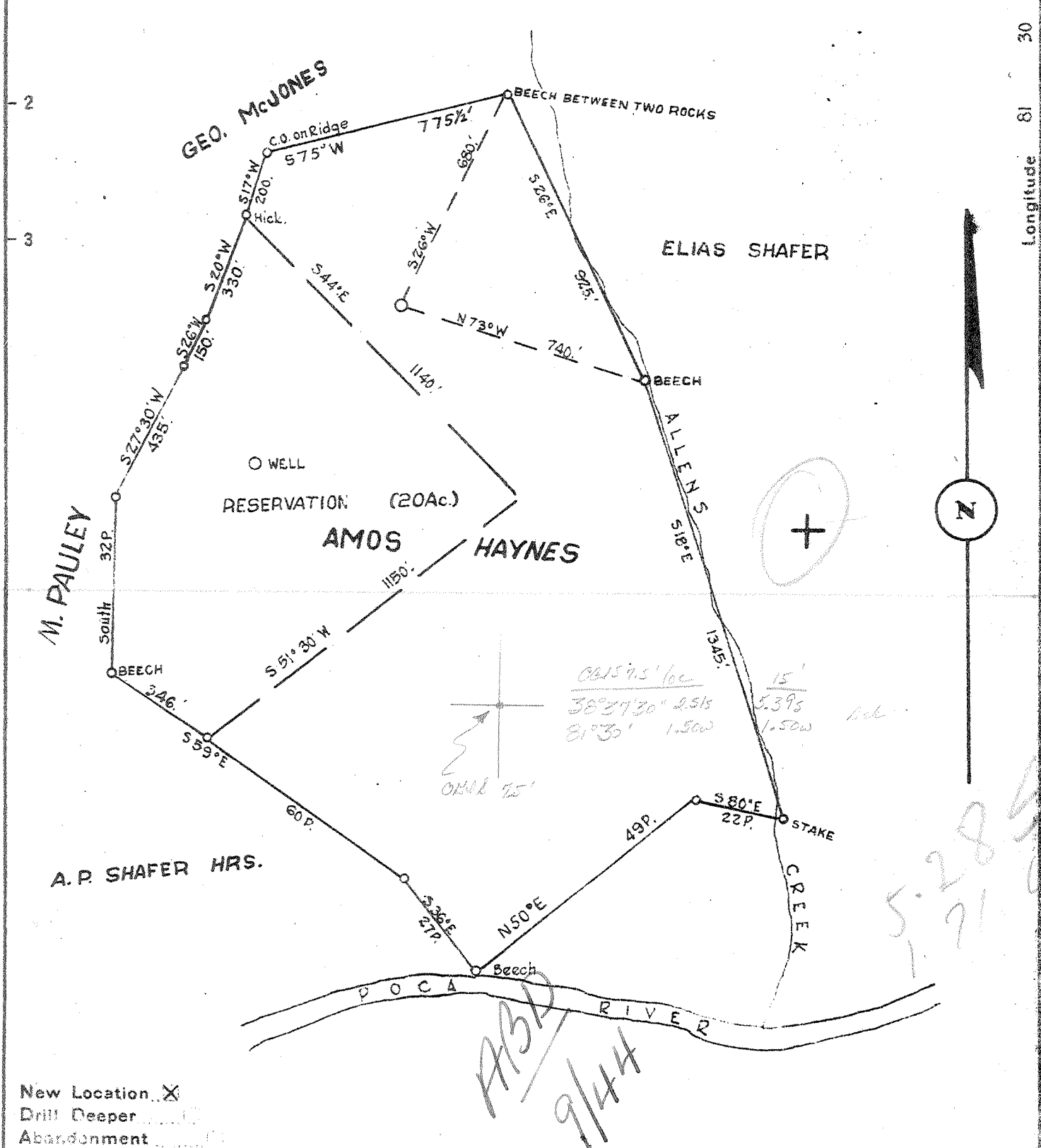


Latitude 38° 40'

Longitude 81° 30'



Company POCA FORK O. & G. Co.

Address CLENDENIN - W. VA.

Farm AMOS HAYNES

Tract \_\_\_\_\_ Acres 65 Lease No. \_\_\_\_\_

Well (Farm) No. ONE Serial No. \_\_\_\_\_

Elevation (Spirit Level) 1000.

Quadrangle KENNA.

County KANAWHA District POCA

Engineer A. E. PRICE

Engineer's Registration No. 819

File No. \_\_\_\_\_ Drawing No. \_\_\_\_\_

Date 9/6/41 Scale 1" = 400'

STATE OF WEST VIRGINIA  
DEPARTMENT OF MINES  
OIL AND GAS DIVISION  
CHARLESTON

**WELL LOCATION MAP**  
FILE NO. KAN-867

+ Denotes location of well on United States Topographic Maps, scale 1 to 62,500, latitude and longitude lines being represented by border lines as shown.

- Denotes one inch spaces on border line of original tracing.

WEST VIRGINIA DEPARTMENT OF MINES  
OIL & GAS DIVISION  
W E L L R E C O R D

Permit No. Kan 867

Company Pocahontas Oil & Gas Co.  
Address Clendenin, W.Va.  
Farm Norma Haynes Acres ---  
Location Pocahontas  
Well No One  
Surface Haynes Heirs  
Mineral Same  
Commenced ---  
Completed Jan. 5, 1942  
Shot 1-5-42 Depth 5261-5294, 110 qts.  
Flow 19/10ths M in 7" O.D.  
Volume 7,883,000 C.F.  
Rock Pressure 1440 lbs. 24 hrs.  
Oil None

Gas Well  
CASING & TUBING  
13 12 ---  
10 725 ---  
8 5/8 1967 1967  
7" O.D. 5133 5133

Casing cemented:  
7" 15 bags. 8 5/8"  
200' with 25 bags.

*anna  
plot*

*pocahontas*

Formation	0	10	Corniferous	5123	5263
Sand	10	35	Oriskany	5263	5293
Red Rock	35	60	Black Lime	5293	5312
Lime Shells	60	80	Sand	5312	5325
Slate Shells	80	120	Lime	5325	
Sand	120	190	TOTAL DEPTH		5329
Slate & Shells	190	309			
Sand	309	325			
Slate & Shells	325	345			
Red Rock	345	365			
Lime Shells	365	375			
Sand	375	402			
Red Rock	402	495			
Lime, S	495	505			
Red Rock	505	525			
Slate & Shells	525	600			
Sand	600	620			
Slate & Lime S	620	760			
Sand	760	785			
Slate & Shells	785	812			
Sand	812	860			
Break	860	862			
Sand	862	920			
Slate	920	1025			
Sand	1025	1090			
Slate, S	1090	1102			
Sand	1102	1190			
Slate & Shells	1190	1220			
Sandy Lime	1220	1250			
Slate, S	1250	1312			
Sand	1312	1345			
Slate & Lime	1345	1385			
Sandy Lime	1385	1400			
Salt Sand	1400	1594			
Slate	1594	1602			
Salt Sand	1602	1752			
Little Lime	1752	1775			
Slate	1775	1778			
Lime Shells	1778	1785			
Pencil Cave	1785	1790			
Big Lime	1790	1935			
Big Injun	1935	1960			
Slate	1960	1965			
Lime Shells	1965	1977			
Slate & Shells	1977	3920			
Brown Shale	3920	3980			
White Slate	3980	4005			
Brown Shale	4005	4275	Gas in shale at 4180		
White Slate	4275	4740			
Brown Shale	4740	4800			
White Slate	4800	4820			
Brown Shale	4820	5045			
White Slate	5045	5080			
Brown Shale	5080	5100			
Black Shale	5100	5123			