

Topo Quad: Romance 7.5'

Scale: 1" = 2000'

County: Kanawha

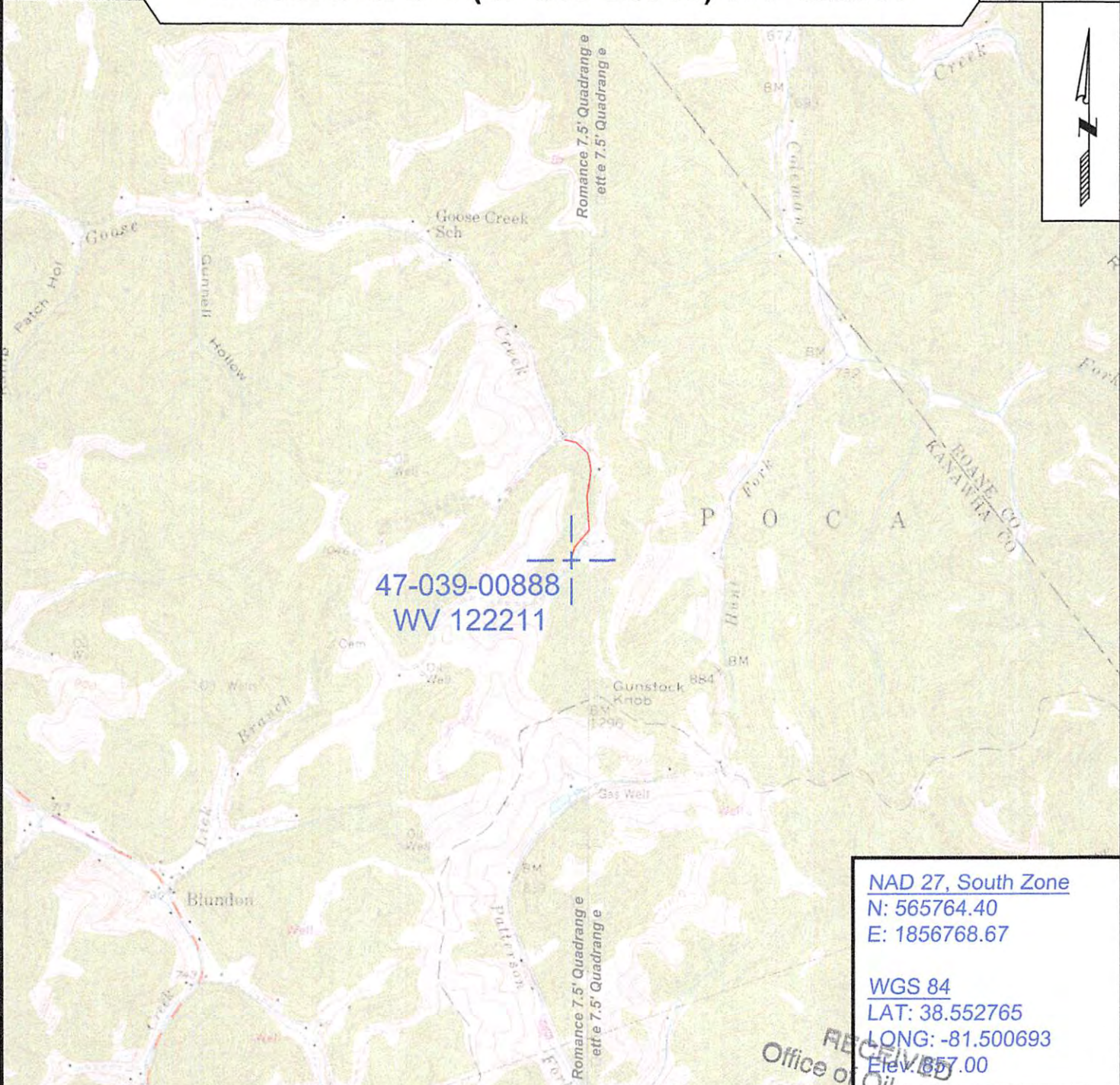
Date: October 17, 2016

District: Poca

Project No: 52-14-00-07

L. Jackson B-1 (47-039-00888) WV 122211

Topo



47-039-00888
WV 122211

NAD 27, South Zone
N: 565764.40
E: 1856768.67

WGS 84
LAT: 38.552765
LONG: -81.500693
Elev: 857.00

RECEIVED
Office of Oil and Gas

PREPARED FOR:

EQT Production Company
P.O. Box 280
Bridgeport, WV 26330



ALLEGHENY SURVEYS, INC.

1-800-482-8606
237 Birch River Road
Birch River, WV 26610
PH: (304) 649-8606
FAX: (304) 649-8608

WV Department of
Environmental Protection

12/16/2016