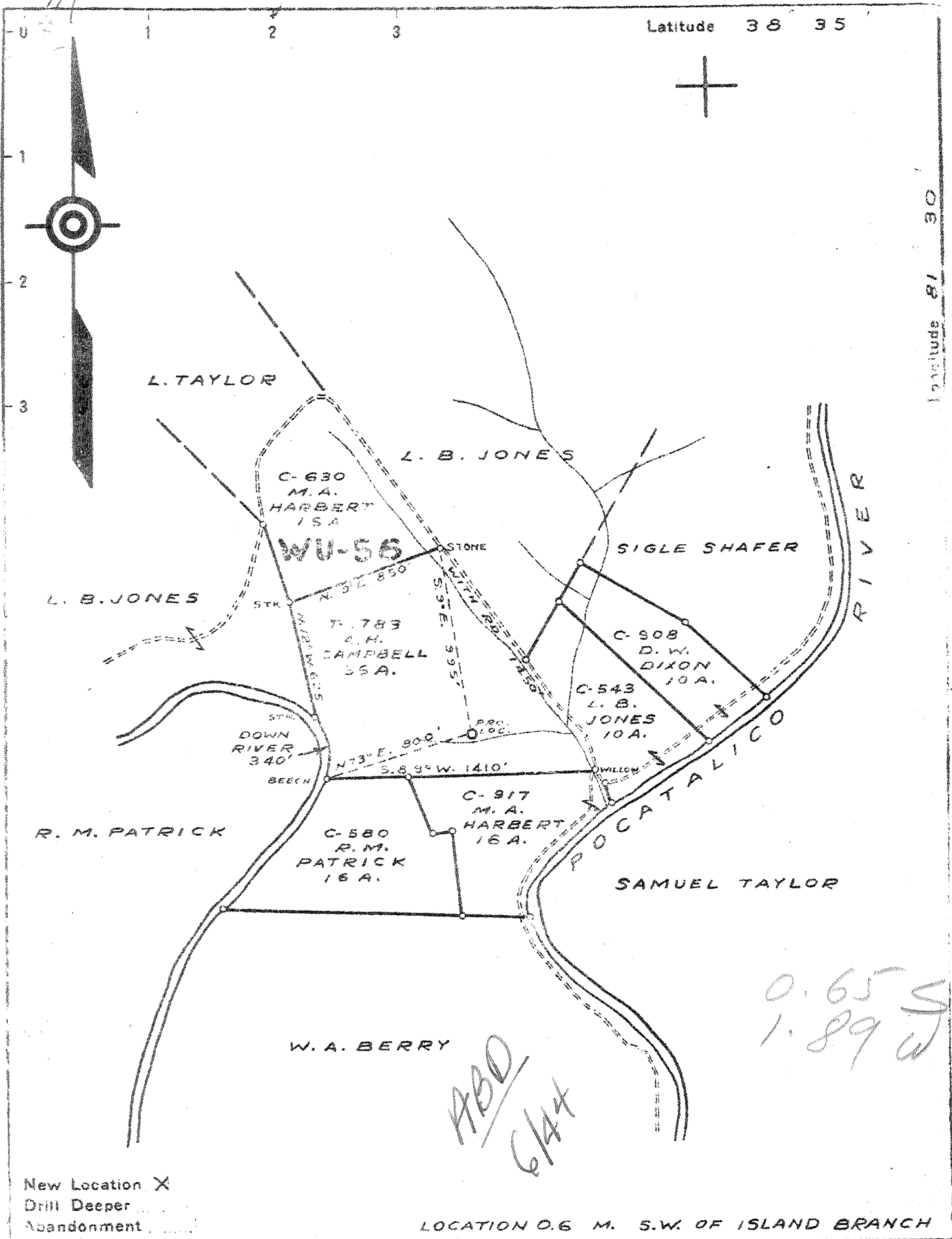


Latitude 38 35

Longitude 81 30



0.65 S
1.89 W

Handwritten: ABD
6/44

New Location X
Drill Deeper
Abandonment

LOCATION 0.6 M. S.W. OF ISLAND BRANCH

Company COLUMBIAN CARBON CO.
 Address BOX 1240 CHARLESTON W.VA.
 Farm A.H. CAMPBELL - ET AL
 Tract _____ Acres 104 Lease No. WU-56
 Well (Farm) No. ONE Serial No. _____
 Elevation (Spirit Level) 740.0
 Quadrangle KENNA S.E. -7-
 County KANAWHA District POCA
 Engineer J. M. Bell
 Engineer's Registration No. 772
 File No. _____ Drawing No. 393
 Date NOV. 18, 1941 Scale 1" = 660'

STATE OF WEST VIRGINIA
DEPARTMENT OF MINES
OIL AND GAS DIVISION
CHARLESTON

WELL LOCATION MAP
FILE NO. KAN-894

+ Denotes location of well on United States Topographic Maps, scale 1 to 62,500, latitude and longitude lines being represented by border lines as shown.
 - Denotes one inch spaces on border line of original tracing.

WEST VIRGINIA DEPARTMENT OF MINES
OIL & GAS DIVISION
W E L L R E C O R D

Permit No. Kan 894
Kenna Quad. S.E.

Gas Well
CASING & TUBING

Company	Columbian Carbon Company			
Address	Box 1240, Charleston, W.Va.	14	25'1	Same
Farm	A. H. Campbell Acres 104	10 $\frac{1}{2}$	464'4	Pulled
Location	Pacatalico River	8 5/8	1564'4	Same
Well No	1-B (GW 632) Elev. 744.7 DF	7	4923'6	Same
District	Poca Kanawha County	2 3/8	5100'4	Same
Surface	F. M. Harbert Heirs, (for further addresses contact Columbian Carbon Co)	3 $\frac{1}{2}$	84'9	Same

Mineral

Commenced 12-26-42
Completed 4-16-42
Date shot 4-16-42 Depth 5101 SLM to 5046' SLM with 450# 80% Gelatin

Volume 412 MCF
Rock Pressure 1170 lbs 2 days
Oil 1182-86 show
Fresh Water 510' 4-10" Blrs. per hr.
Salt Water 1260' H.F.

Clay	0	25	Brown Shale	4500	4880SLM
Sand	25	60	Corniferous Lime	4880 SLM	5002SLM
Gray Shale	60	65	Oriskany Sand	5002 SLM	5046
Sand	65	90	Black Lime	5046	5070
Red Rock	90	125	Oriskany Sand	5070	5082
Sand	125	140	Lime	5082	5084SLM
Red Rock	140	150	TOTAL DEPTH		5084SLM
White Slate	150	160	PAYS: 5029-29 $\frac{1}{2}$; 5035-38		
Red Rock	160	215			
White Slate	215	225	CEMENT RECORD:		
Red Rock	225	235	1-2-42 Mudded 10 $\frac{1}{2}$ " casing. Ran 28 buckets of red clay in hole with dump bailer.		
Sandy Shale	235	265			
Red Rock	265	275			
Sandy Shale	275	290			
Red Rock	290	320	2-13-42 Cemented 8 5/8" casing. Ran 15 buckets red mud. Ran 150 sacks Alpha cement. Ran plug on bottom- 10' spacer- plug on top cement. Plug stopped 10' off bottom. 32' cement in pipe. S.K. Johnson, Cementer, Halliburton Oil Well Cementing Co.		
White Shale	320	340			
Sand	340	355			
White Slate	355	420			
Sand	420	432			
White Shale	432	460			
White Sand	460	515			
Gray Shale	515	520			
Sand	520	635	3-30-42 Cemented 7" casing. Ran 10 sacks Alpha cement by dump bailer. Picked pipe up and set down in cement. 35' cement in hole. Columbian Carbon Company Crew.		
Gray Slate	635	645			
Sand	645	680			
Black Slate	680	710			
White Slate	710	760			
Sand	760	920			
Slate	920	1140			
Salt Sand	1140	1220	Oil 1182-86 Show		
Slate	1220	1226			
Salt Sand	1226	1473			
Slate	1473	1483			
Lime	1483	1493			
Sand	1493	1502			
Lime	1502	1510			
Sand - <i>Marion</i>	1510	1518			
Little Lime	1518	1542			
Break - <i>P. L. L.</i>	1542	1545			
Big Lime	1545	1698			
Sand - <i>Blue Limestone</i>	1698	1722			
Slate & Shells	1722	3340			
Brown Shale	3340	3410			
Slate & Shells	3410	3630			
Brown Shale	3630	3705			
Slate	3705	3830			
Brown Shale	3830	4040			
Slate	4040	4430			
Brown Shale	4430	4455			
Slate	4455	4500			