

New Location   
 Drill Deeper   
 Abandonment  issued 6-4-70

**CABOT CORP.**

Company Cabot Corp. Inc.  
 Box 1473

Address 900 Union Bldg. Charleston W.Va.

Farm D. Holmes Morton

Tract \_\_\_\_\_ Acres 117 Lease No. 3-467

Well (Farm) No. 8 Serial No. 51026

Elevation (Spirit Level) 896.59

Quadrangle Kenna SW

County Kanawha District Poca

Engineer Charles Sturm

Engineer's Registration No. 975

File No. \_\_\_\_\_ Drawing No. \_\_\_\_\_

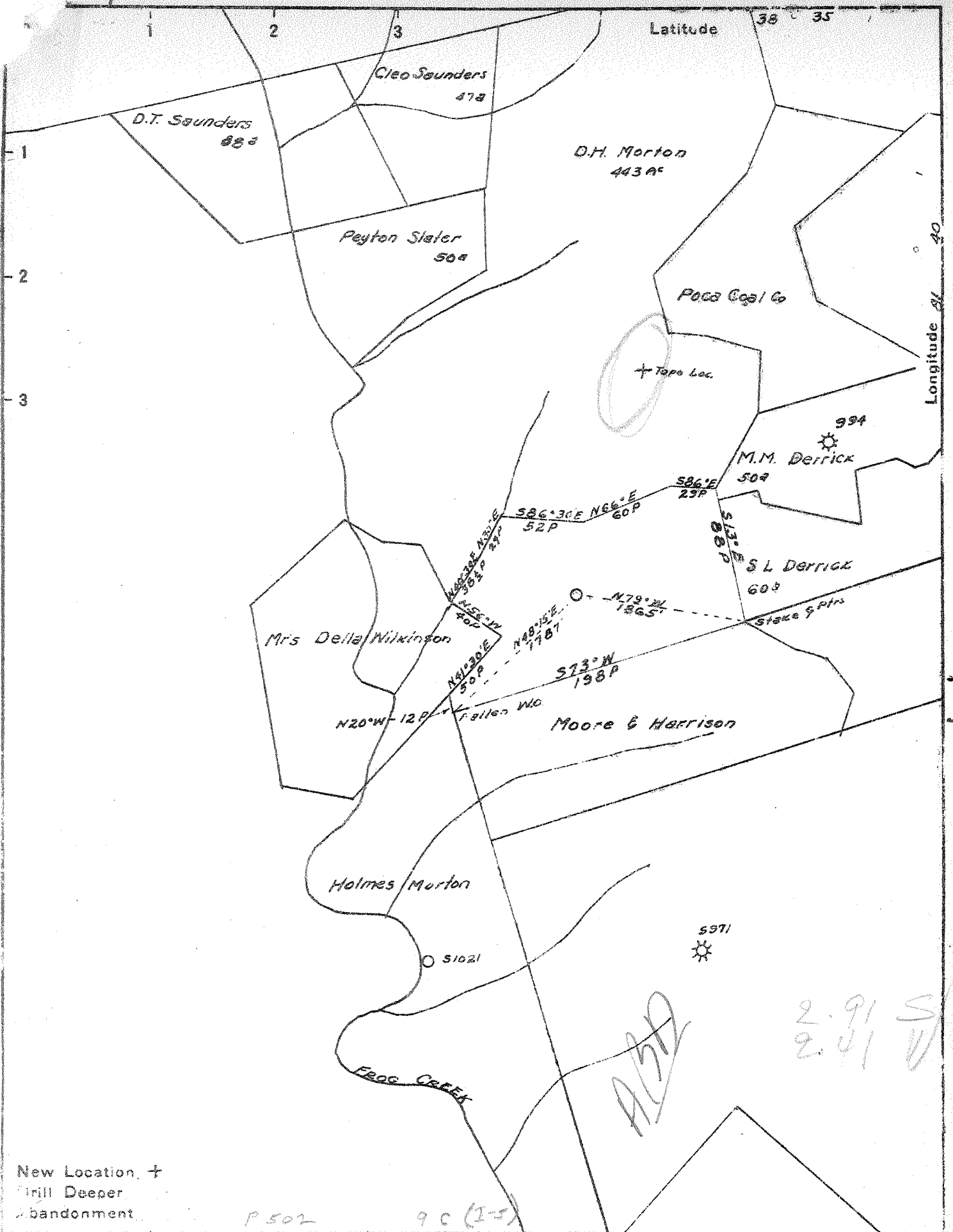
Date 12-23-41 Scale 1" = 1320'

STATE OF WEST VIRGINIA  
 DEPARTMENT OF MINES  
 OIL AND GAS DIVISION  
 CHARLESTON

**WELL LOCATION MAP**  
 FILE NO. Kan-912-P

+ Denotes location of well on United States Topographic Maps, scale 1 to 62,500, latitude and longitude lines being represented by border lines as shown.

- Denotes one inch spaces on border line of original tracing.



New Location, +  
 Drill Deeper  
 Abandonment.

P 502 9 C (I-5)

Company GODFREY L. CABOT INC.  
 Address 900 UNION BLDG. CHARLESTON W.Va.  
 Farm D. HOLMES MORTON  
 Tract \_\_\_\_\_ Acres 117 Lease No. 3-467  
 Well (Farm) No. 8 Serial No. 51026  
 Elevation (Spirit Level) 896.59  
 Quadrangle Keona  
 County Kanawha District Poca  
 Engineer Charles Stinson  
 Engineer's Registration No. 975  
 File No. \_\_\_\_\_ Drawing No. \_\_\_\_\_  
 Date 12-23-41 Scale 1"=1320'

STATE OF WEST VIRGINIA  
 DEPARTMENT OF MINES  
 OIL AND GAS DIVISION  
 CHARLESTON

WELL LOCATION MAP  
 FILE NO. K27-912

+ Denotes location of well on United States Topographic Maps, scale 1 to 62,500, latitude and longitude lines being represented by border lines as shown.

- Denotes one inch spaces on border line of original tracing.

✓ Deepwell

WEST VIRGINIA DEPARTMENT OF MINES  
OIL & GAS DIVISION  
W E L L R E C O R D

Permit No. Kan 912	Godfrey L. Cabot, Inc.	Gas Well
Company	Charleston, W. Va.	CASING & TUBING
Address	D. H. Morton Acres	10 1/2" 679 679
Farm		8 5/8" 2072 2072
Location		7" 4985 4985
Well No.	8 Ser. 1026 Elev. 897	2 3/8" 5107 5107
District	Poca Kanawha County	1 8 5/8" x 16" D. H. Packer
Commenced	1-27-42	23 sacks aquagel
Completed	4-20-42	1 7" ODSp. Orisk. D. H.
Shot	4-22-42	Packer, 5 sacks aquag.
Volume	4500 MCF A.S. (20 Min) D.S. 873 M	& 4 sacks fibertex.
Rock Pressure	1655 lbs. 47 hrs.	(2 3/8) bottom joint
Salt Water	1500' hole full	welded. Line pipe
		used as tubing. Tubed
		under pressure.
		Perf. top bot
	Tubed and shut in 4-30-42	5046 5054
		5100 5105

Red Rock	0	25	Gray Shale	2535	2635
Slate	25	45	Slate & Shells	2635	3100
Sand	45	68	Gray Shale	3100	3720
Red Rock	68	75	Brown Shale	3720	3780
Blue Slate	75	78	Gray Lime	3780	3805
Red Rock	78	93	Gray Shale	3805	4000
Slate	93	149	Brown Shale	4000	4280
Red Rock	149	168	White Shale	4280	4700
Slate Blue	168	315	Brown Shale	4700	4960
Red Rock	315	340	Corniferous Lime	4960	5049
Shale	340	350	Oriskany Sand	5049	5069
Limo	340	350	Lime	5069	5070
Shale	350	385	Oriskany Sand	5070	5106
Red Rock	385	435	Holderborg Lime	5106	5128
Limo	435	440	TOTAL DEPTH		5128 SLM
Shale	440	465	Show gas	2485	
Lime, gritty	465	520	Shale Gas	3112	60 M
Slate	520	560	Show gas	5055	
Limo	560	570	Gas	5063	343 M
Slate, White	570	600	Gas	5064	822 M
Gritty, Lime	600	615	Gas	5066	1443 M
Slate & Shells	615	668	GAUGES IN ORISKANY		
Red Rock	668	683	5055	show of gas	
Slate	683	695	5059	146 M	
Limo	695	705	Shut in to test casing.		
Slate	705	725	5059	Before drilling	94 M
Dunkard Sand	725	765	5064	822 M	
Shale	765	780	5066	69	1443 M
Dunkard Sand	780	830	5070	889 M	
Slate & Shells	830	865	5073	678 M	
Shale	865	875	5078	516 M	
Limo	875	885	5089	93	381 M
Shale	885	945	5105	260 M	
Shale & Shells	945	1030	5108	253 M	
Sand	1030	1090	5124	231 M	
Slate & Shells	1090	1125	GAUGES IN ORISKANY AFTER SHOT		
Coal	1125	1130	Gauge before shot	783 M	
Slate & Shells	1130	1165	5 mins A.S.	4720 M	
Limo	1165	1235	10 Mins A.S.	4720 M	
Limo Shells	1235	1310	15 " "	4500 M	
Slate & Shells	1310	1415	20 " "	4500 M	
Salt Sand	1415	1850			
Shale	1850	1855			
Limo Big	1855	2030			
Injun Sand	2030	2060			
Limo Shells	2060	2085			
Slate & Shells	2085	2340			
Limo	2340	2355			
Gray Shale	2355	2413			
Shale & Shells	2413	2480			
Berea Grit	2480	2494			
Gray Shale	2494	2505			
Limo	2505	2535			