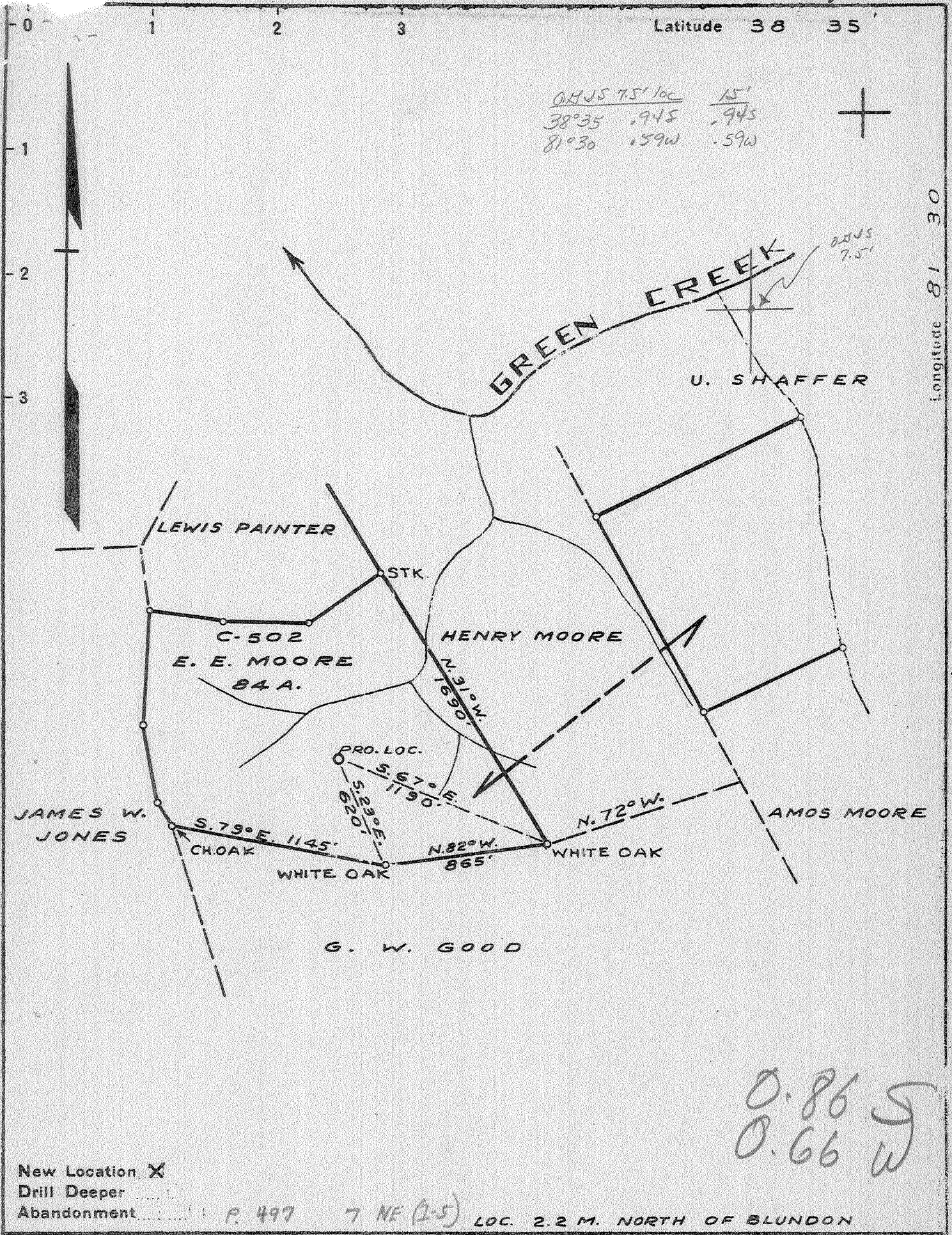


P



0.86 S
0.66 W

New Location X
 Drill Deeper
 Abandonment P. 497 7 NE (2.5) LOC. 2.2 M. NORTH OF BLUNDON

Company COLUMBIAN CARBON CO.
 Address BOX 1240 CHARLESTON W.VA.
 Farm E. E. MOORE
 Tract _____ Acres 84 Lease No. C-502
 Well (Farm) No. ONE Serial No. _____
 Elevation (Spirit Level) 991.9
 Quadrangle KENNA S. E. -7-
 County KANAWHA District POCA
 Engineer J. M. Cole
 Engineer's Registration No. 772
 File No. _____ Drawing No. 427
 Date 12-23-41 Scale 1" = 660'

STATE OF WEST VIRGINIA
 DEPARTMENT OF MINES
 OIL AND GAS DIVISION
 CHARLESTON

WELL LOCATION MAP
 FILE NO. KAN - 914

+ Denotes location of well on United States Topographic Maps, scale 1 to 62,500, latitude and longitude lines being represented by border lines as shown.
 - Denotes one inch spaces on border line of original tracing

✓ Deepwell

WEST VIRGINIA DEPARTMENT OF MINES
OIL & GAS DIVISION
WELL RECORD

Permit No. Kan 914		Gas Well
Company	Columbian Carbon Co.	CASING & TUBING
Address	Box 873, Charleston, W.Va.	14 39" 39"
Farm	E. E. Moore Acres 84	10(32.75#)763'7
Location	Green Creek	481'
Well No.	GW-641 Elev. 994.3DF	85/8(24#) 1790'4
District	Colbon #6 Kanawha County	1790'4
Surface	E.E. Moore & C.A. Huffman	7"(22#) 5194'8 5194'8
	Elkview, W.Va.	2 3/8 5379'11 5379'11
Commenced	3-11-42	3 1/2(8.70#) 85' 85'
Completed	7-2-42	
Shot	6-27-42 Depth 5280-5310 SLM	
	with 200# Gelatin	
Volume	747 MCF	
Rock Pressure	1320# 7 days	
Fresh Water	550' 1-13" blr. 1 hr.	
Salt Water	1460'-1475 2 blr. pr. hr.	
	1840' 1 blr. pr. hr.	

Joca

District

Surface	0	20	
Shale	20	30	
Red Rock	30	40	
Shale	40	45	
Sand	45	145	
Slate	145	225	
Sand	225	285	
Slate	285	300	
Red Rock	300	525	
Sand	525	580	
Red Rock	580	610	
Shale	610	700	
Sand	700	900	
Slate	900	980	
Sand	980	1120	
Slate	1120	1385	
Salt Sand	1385	1651	
Coal	1651	1655	
Sand - <i>Marble</i>	1655	1745	
Little Lime	1745	1773	
Pencil Cave	1773	1775	Gas show 1365'
Lime - <i>PC</i>	1775	1780	Oil 1360' slight show
Slate - <i>PC</i>	1780	1785	Gas 1917' show
Big Lime	1785	1938	
Big Injun Sand	1938	1955	
Shale	1955	1975	
Sand	1975	1990	
Lime	1990	2005	
Slate & Shells	2005	2360	
Lime	2360	2380	
Slate & Shells	2380	4000	
Brown Shale	4000	4200	
Shale, White	4200	4740	
Brown Shale	4740	4825	
White Shale	4825	4850	
Brown Shale	4850	5050	
White Shale	5050	5085	
Brown Shale	5085	5098	
Black Shale	5098	5150	SLM
→ Corniferous Lime	5150	SLM5271	SLM
Oriskany Sand	5271	SLM5319	
Black Lime	5319	5328	
Oriskany Sand	5328	5359	
Black Lime	5359	5362	SLM Pay 5297-5305
TOTAL DEPTH		5362	SLM

CEMENT RECORD: 4-8-42 Cemented 85/8" casing. Ran 75 sacks Alpha cement and 1 bag aquagel mixed 6%. 12' cement in hole.

4-13-42 Ran cement squeeze job to shut off water. Ran 25 bags Alpha Cement through tubing. Squeezed cement with 1200# pressure for 3 hrs. 44' cement in hole.

6-4-42 Cemented 7" casing. Ran 10 bags of Alpha Cement with the dump bailer. Picked pipe up 15' and set down on bottom. 7' cement in pipe.

6-14-42 Water leaked through above cement job. Filled hole up with rock and stone from 5241-5173' (see below)

Ran 35 sacks aquagel 6% mixed and spotted 10 sacks cement through tubing to bottom - put 1500# pressure on cement. Could not pump aquagel around 2" pipe at 2000#. 50' solid cement in pipe.

5150	5271	5359
994	994	994
4156	4277	4365