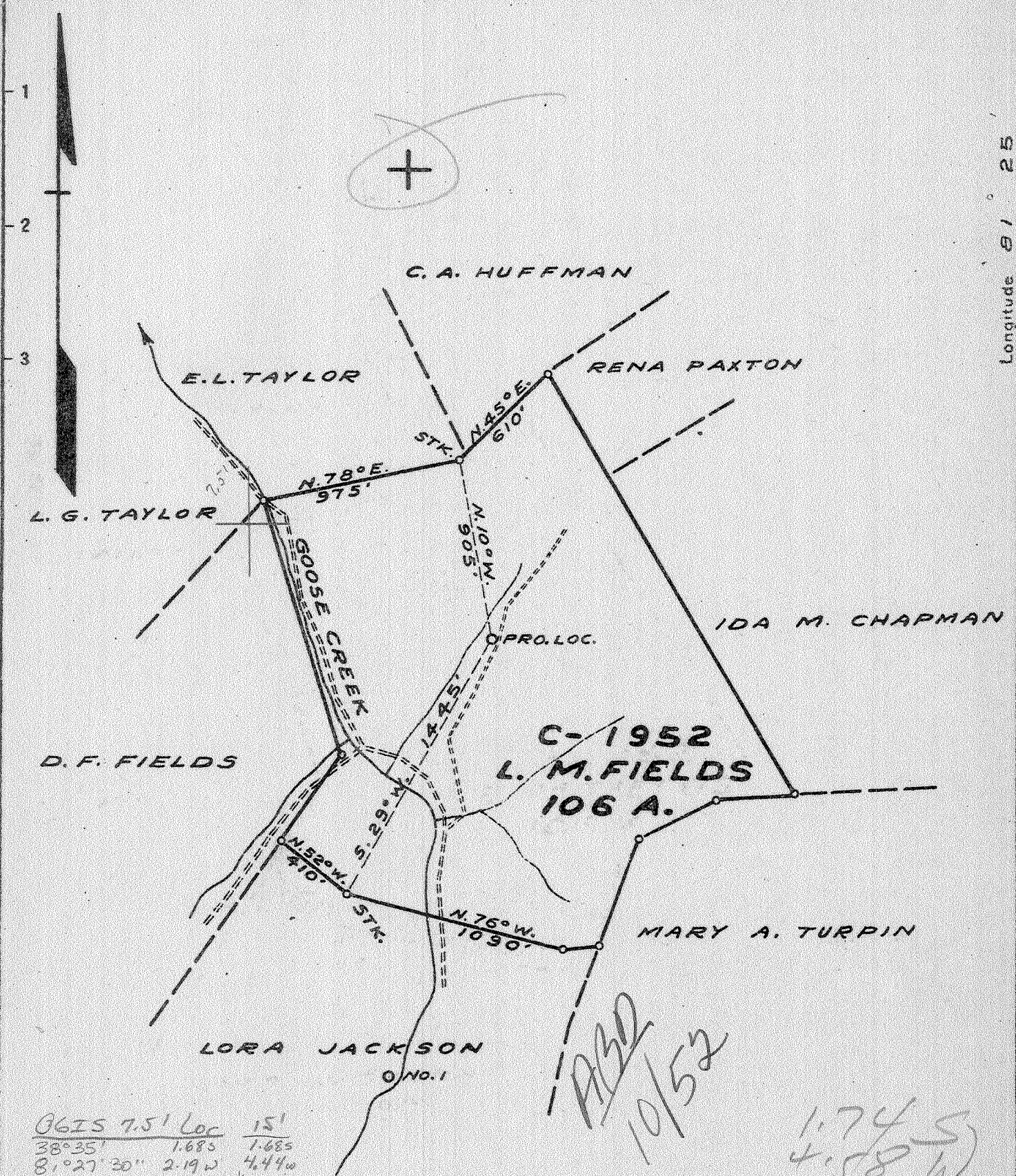


P

Latitude 38° 35'

Longitude 81° 25'



6625 7.5' Loc 15'
 38° 35' 1.685 1.685
 81° 27' 30" 2.19 W 4.44 W
 sdc

10/52
 1.74
 4.58 W

New Location X
 Drill Deeper
 Abandonment

2.420 9 NW (I-6) LOC. 1.4 M. S.W. OF KETTLE

Company COLUMBIAN CARBON CO.
 Address BOX 1240 CHARLESTON W.VA.
 Farm L. M. FIELDS
 Tract _____ Acres 106 Lease No. C-1952
 Well (Farm) No. ONE Serial No. GW-672
 Elevation (Spirit Level) 304.4
 Quadrangle WALTON S.W. -9- Kettle
 County KANAWHA District POCA
 Engineer J. M. Sell
 Engineer's Registration No. 772
 File No. _____ Drawing No. 384
 Date 4-22-42 Scale 1" = 660'

STATE OF WEST VIRGINIA
 DEPARTMENT OF MINES
 OIL AND GAS DIVISION
 CHARLESTON

WELL LOCATION MAP
 FILE NO. KAN-934

+ Denotes location of well on United States Topographic Maps, scale 1 to 62,500, latitude and longitude lines being represented by border lines as shown.

- Denotes one inch spaces on border line of original tracing.

✓ deep well

WEST VIRGINIA DEPARTMENT OF MINES
OIL & GAS DIVISION
W E L L R E C O R D

Permit No. Kan 934

Walton Quad.

Company

Address

Farm

Location

Well No

District

Surface

Mineral

Commenced

Completed

Date shot

Volume

Rock Pressure

Fresh Water

Salt Water

Columbian Carbon Company

Box 873, Charleston, W.Va.

L.M. Fields Acres 106

Goose Creek

B-1 GW-672

Poca

L.M. Fields et ux, Elkview, W.Va.

Gas Well

CASING & TUBING

10 $\frac{1}{2}$ " 51'8" 51'8"

85/8 608'10" 0

7" 1735'7" 0

5 $\frac{1}{2}$ " 5162'6" 5162'6"

23/8 5322'10" 5322'10"

3 93'4" 93'4"

Elev. 911.2DF

Kanawha County

6-9-42

9-17-42

9-17-42 Depth 5241 SLM to 5266 SLM

with 166-2/3# Gelatin

747 MCF

770# 16 hrs.

735' $\frac{1}{2}$ blr. pr. hr;

1350' H.F.

Sand	0	72	Oriskany Sand	5291	5304
Red Rock	72	150	Lime	5304	5311 SLM
Sand	150	170	TOTAL DEPTH		5311 SLM
Red Rock	170	200			
Sand	200	215	PAYS: 5256; 5260-61		
Red Rock	215	220			
Slate	220	270	Oil 1330' Slight show		
Red Rock	270	280	Gas 1326 Show		
Sand	280	315			
Slate	315	325	CEMENT RECORD: 6-30-42		
Lime	325	330	Aquagelled 7" casing. Ran 15 sacks		
Red Rock	330	360	aquagel and 1 bale Fibrotex, mixed 6%.		
Slate & Shells	360	410	Ran plug on top aquagel. Returns 711'		
Red Rock	410	430			
Sand	430	450	8-25-42 Cemented 5 $\frac{1}{2}$ " casing. Ran 30		
Slate	450	470	sacks aquagel mixed with 1 bale Fibrotex.		
Lime	470	480	Ran water to displace aquagel-leaving		
Slate & Shells	480	595	200' of aquagel in hole. Picked pipe		
Sand	595	620	up 48' and ran 3 sacks Alpha cement		
Slate	620	655	with dump bailer. Pipe went back to		
Sand	655	698	bottom. 16' cement in pipe.		
Slate	698	703			
Sand	703	770			
Slate	770	925			
Sand	925	985			
Slate	985	1082			
Sand	1082	1112			
Slate	1112	1170			
Sand	1170	1230			
Slate	1230	1250			
Salt Sand	1250	1520			
Slate	1520	1530			
Sand - Shells	1530	1648			
Slate	1638	1653			
Little Lime	1653	1690			
Slate	1690	1695			
Big Lime	1695	1870			
Big Injun Sand	1870	1940			
Slate & Shells	1940	2270			
Brown Shale	2270	2283			
→ Berea Shell	2283	2290			
Slate & Shells	2290	3930			
Brown Shale	3930	4150			
Slate & Shells	4150	4230			
White Slate	4230	4680			
Brown Shale	4680	4985			
White Slate	4985	5025			
Brown Shale	5025	5055			
Black Shale	5055	5106 SLM			
Corniferous Lime	5106 SLM	5231 SLM			
Oriskany Sand	5231 SLM	5279			
Lime	5279	5291			

5106 5231 5304
911 911 911

4195 4320 4393