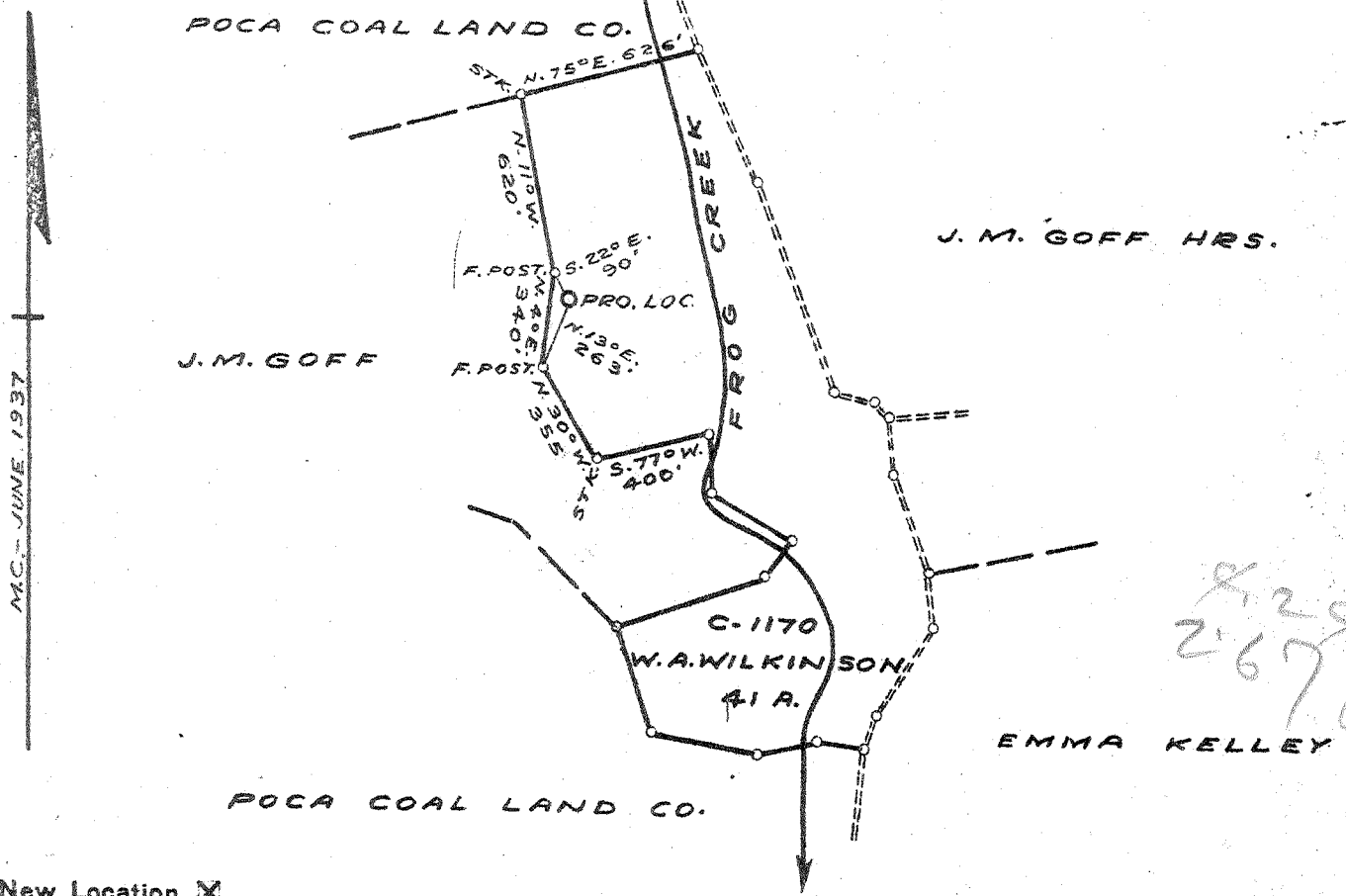


SKETCH SHOWING COMPOSITION OF WU-81
1" = 2640'



75
0615mof
1245
24W



- New Location
- Drill Deeper
- Abandonment

2 P. 484 95C (I-5) LOC. 2.0 M. N.E. OF WINTER

Company	COLUMBIAN CARBON CO.
Address	BOX 873 CHARLESTON W.VA.
Farm	C. J. HOLMES ET AL
Tract	Acres 177 Lease No. WU-81
Weil (Farm) No.	ONE Serial No.
Elevation (Spirit Level)	763.0
Quadrangle	KENNA S.W. -9-
County	KANAWHA District POCA
Engineer	<i>J. Smith</i>
Engineer Registration No.	772
File No.	Drawing No. 189
Date	SEPT. 29, 1942 Scale 1" = 660'

STATE OF WEST VIRGINIA
DEPARTMENT OF MINES
OIL AND GAS DIVISION
CHARLESTON

WELL LOCATION MAP
FILE NO. KAN-972

+ Denotes location of well on United States Topographic Maps, scale 1 to 62,500, latitude and longitude lines being represented by border lines as shown.
- Denotes one inch spaces on border line of original tracing.

Deep Well.

WEST VIRGINIA DEPARTMENT OF MINES
OIL & GAS DIVISION
W E L L R E C O R D

Permit No. Kan 972
Kenna Quad S.W.

Gas Well
CASING & TUBING

Company	Columbian Carbon Company		
Address	Box 873, Charleston, W.Va.	13 3/8	19'6 Same
Farm	C.J.Holmes et al Acres 177	10 1/2	567'9 Pulled
Location	Frog Creek	8 5/8	1693' "
Well No	1 (GW-688) Elev. 764.5 D.F.	7"	1939'8 "
District	Poca Kanawha County	5 1/2 mixed	4814'4 Same
Surface	Dexter Parsons Route 4, Box 35 Charleston, W.Va. (41A)	2 3/8	4906'8 Same
Mineral	D.J.Holmes et al (for further addresses contact Col. Carbon)	3 1/2	82'5 Same
Commenced	10-12-42		
Completed	3-10-43		
Date shot	3-11-43 Depth 4850 to 4890 SLM with 266-2/3 # Atlas Gelatin		
Volume	1220 M.C.F.		
Rock Pressure	1480 lbs. 55 hrs.		
Salt Water	885' 1 1/2-10" blr. 1 hr.; 1286'H.F. 1845' filled up to 1200'		

Soil	0	6	PAYS: 4850; 4855; 4860-63;
Sand	6	60	4865-66; 4874-75; 4886-87
Slate	60	90	
Red Rock	90	108	Gas 1898' Show
Sand	108	130	Gas 3040' show
Slate	130	192	
Red Rock	192	265	CEMENT RECORD:
Slate & Shells	265	295	10-17-42 Aquagelled 10 1/2" casing. Ran
Sand	295	334	8 sacks Aquagel. Good Circulation and
Red Rock	334	374	returns.
Slate & Shells	374	475	11-4-42 Aquagelled 8 5/8" casing. Ran
Red Rock	475	485	21 sacks Aquagel and 50# Fibrotex. Good
Slate & Shells	485	520	circulation - good returns at 1698'
Sand	520	560	11-15-42 Aquagelled 7" casing. Ran 16
Slate & Shells	560	615	sacks Aquagel and 20# Fibrotex.
Sand	615	680	Circulation about 200'. Returns 1700'
Slate	680	700	1-25-42 Ran 50 sacks Aquagel, running
Sand	700	744	tubing to float 5 1/2" pipe in with
Slate	744	1120	floating shoe. Pulled tubing.
Sand	1120	1135	1-27-43 Ran 50 sacks Aquagel and 3 sacks
Slate	1135	1165	Fibrotex. Ran 4 sacks Superior Cement
Sand	1165	1218	in dump bailer. Pipe went to bottom.
Slate & Shells	1218	1236	
Salt Sand	1236	1555	
Slate	1555	1558	
Lime	1558	1570	
Maxon Sand	1570	1659	SLM
Big Lime	1659	SLM 1828	
Slate	1828	1835	
Big Injun Sand	1835	1883	
Black Lime	1883	2029	
Slate & Shells	2029	2283	
Shale	2283	2285	
Berea Grit	2285	2300	
Lime	2300	2763	
Slate & Shells	2763	3852	
Shale	3852	3875	
Slate & Shells	3875	3907	
Shale	3907	3979	
Slate & Shells	3979	4560	
Shale	4560	4763	SLM
Corniferous	4763	SLM 4850	SLM
Oriskany	4850	SLM 4879	
Lime	4879	4885	
Oriskany	4885	4904	
Lime	4904	4924	SLM
TOTAL DEPTH		4924	SLM
		4920	DLM