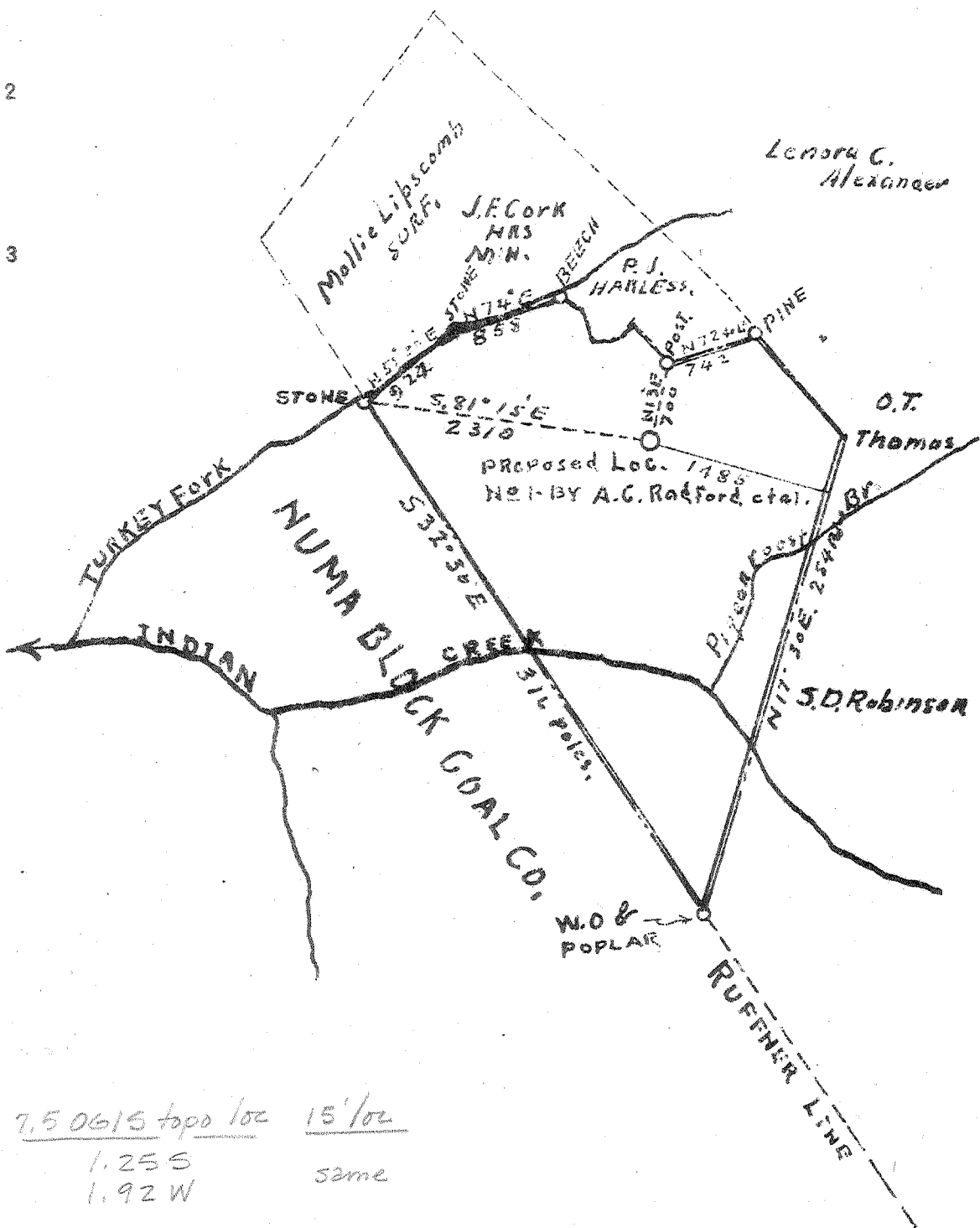


Latitude 38 25

Longitude 81 35



7.5 0615 topo loc 15' loc  
 1.255  
 1.92 W same

1.35 S  
 2.0 W

New Location   
 Drill Deeper   
 Abandonment  No Samples 4 NC (J-6)

Company A.C. RADFORD, ET AL.  
 Address 918-Bigley AVE. Charleston, W.Va.  
 Farm Geo. W. Harless  
 Tract \_\_\_\_\_ Acres 244.0 Lease No. \_\_\_\_\_  
 Well (Farm) No. 1 Serial No. \_\_\_\_\_  
 Elevation (Spirit Level) ~~1010.79~~ 1062  
 Quadrangle CLENDENIN - WC  
 County Kanawha District ELK  
 Engineer J.D. Moore  
 Engineer's Registration No. 159  
 File No. \_\_\_\_\_ Drawing No. \_\_\_\_\_  
 Date March 14, 1945 Scale 1" = 1320'

STATE OF WEST VIRGINIA  
 DEPARTMENT OF MINES  
 OIL AND GAS DIVISION  
 CHARLESTON

**WELL LOCATION MAP**  
 FILE NO. KAN-1214

+ Denotes location of well on United States Topographic Maps, scale 1 to 62,500, latitude and longitude lines being represented by border lines as shown.  
 - Denotes one inch spaces on border line of original tracing.

Examined by RR. Flowers  
 Record all file (5297-5371)

Deep Well, ✓

WEST VIRGINIA DEPARTMENT OF MINES  
OIL & GAS DIVISION  
W E L L R E C O R D

Permit No. Kan 1214			Gas Well
Clendenin Quad.			CASING & TUBING
Company	Linden Drilling Company		
Address	918 Bigley Ave., Charleston 2, W.Va.	10	1692 1692
Farm	G.W. Harless et al Acres 244	8½	2183 2183
Location	Indian Creek	6 5/8	5243 5243
Well No.	One Elev. 1062	2	5330 5330
District	Elk Kanawha County		
Surface	G.W. Harless et al, Pinch, W.Va.		CASING CEMENTED
Mineral	Same	7"	2500' 8-25-45
Commenced	March 28, 1945		
Completed	Aug. 11, 1945		
Open flow	80/10ths M in 7" OD		
Rock Pressure	1850 lbs. 2 hrs.		
Fresh Water	1075' H.F.		
Salt Water	1772' H.F.		

*13,962,000 cu ft*

Soil	0	15 White Slate	5050	5110
Sand	15	35 Black Shale	5110	5187
Slate	35	75 Corniferous Lime	5187	5310
Sand	75	100 Oriskany	5310	5323
Slate	100	150 <i>Gas in Oriskany</i>		
Sand	150	200		
Slate	200	240		
Sand	240	275		
Slate	275	285		
Coal	285	288 ✓		
Slate	288	350		
Sand	350	375		
Slate	375	385		
Coal	385	389 ✓		
Slate	389	440		
Coal	440	444 ✓		
Slate	444	464		
Sand	464	485		
Slate	485	520		
Sand	520	590		
Slate	590	610		
Sand	610	631		
Slate	631	655		
Sand	655	671		
Slate	671	740		
Sand	740	768		
Slate	768	805		
Sand	805	835		
Slate	835	880		
Sand	880	905		
Slate	905	958		
Sand	958	1030		
Slate	1030	1034		
Salt Sand	1034	1150		
Slate	1150	1160		
Sand	1160	1220		
Slate	1220	1230		
Salt Sand	1230	1480		
Slate	1480	1487		
Red Rock	1487	1519		
Slate	1519	1555		
Red Rock	1555	1560		
Slate & Shells	1560	1585		
Maxon Sand	1585	1617		
Little Lime	1617	1655		
Pencil Cave	1655	1674		
Big Lime	1674	1832	Gas 1707 SLM 1674	
Injun Sand	1832	1880	Gas & Oil 2095-2101	
Slate & Shells	1880	1895		
Weir Sand	1895	2101		
Slate & Shells	2101	3450		
Brown Shells	3450	3475		
Slate & Shells	3475	3950		
Brown Shale	3950	4165		
White Slate	4165	4700		
Brown Shale	4700	5050		