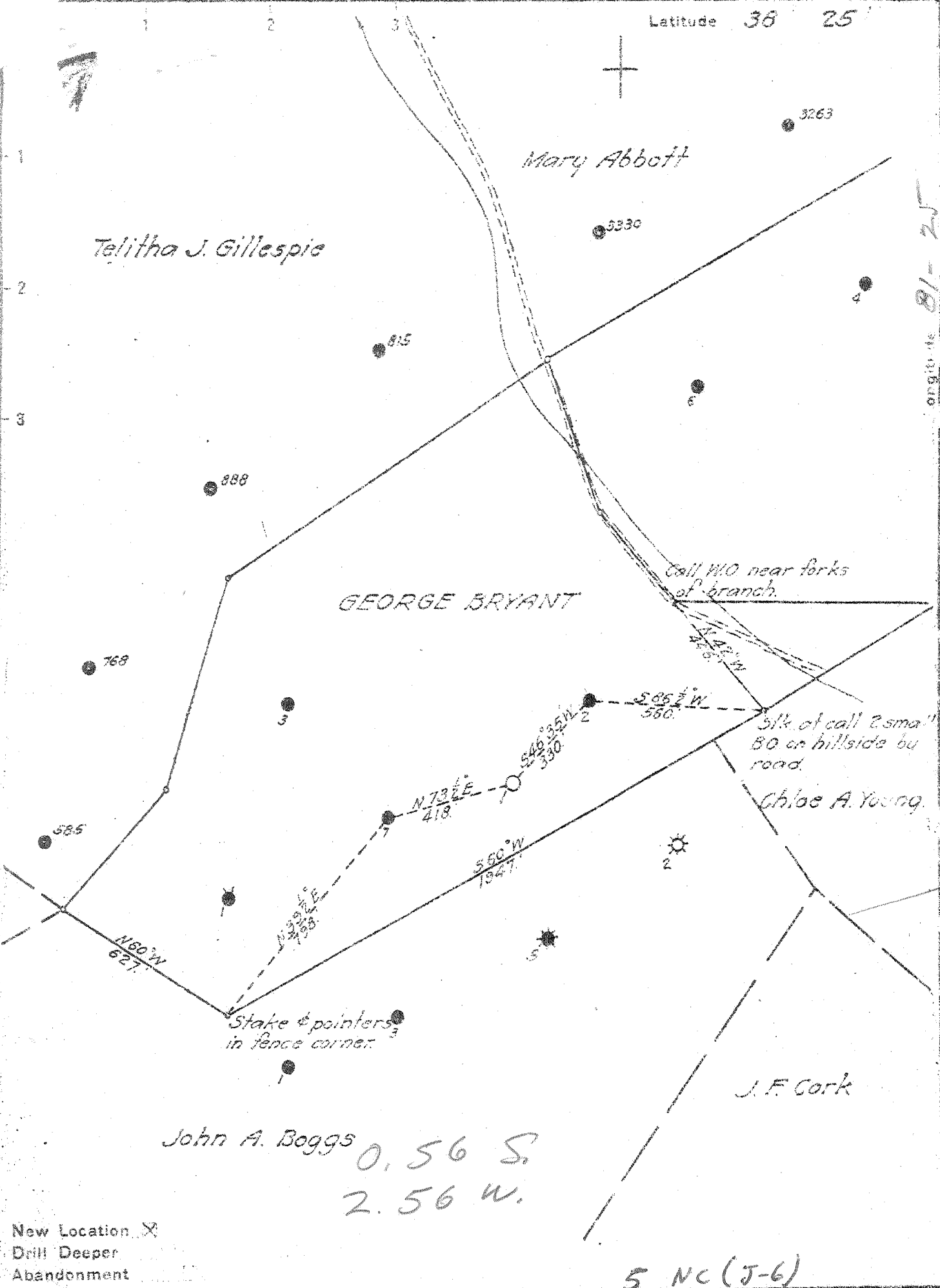


Latitude 38 25



John A. Boggs
 0.56 S.
 2.56 W.

New Location X
 Drill Deeper
 Abandonment

5 NC (J-6)

Company GLENN DEARTH
 Address CHARLESTON W.VA
 Farm GEORGE G. BRYANT
 Tract _____ Acres 91.4 Lease No. _____
 Well (Farm) No. 1 Serial No. _____
 Elevation (Spirit Level) 886.15 Ground
 Quadrangle CLENDENIN - WVC
 County KANAWHA District ELK
 Engineer John Moore
 Engineer's Registration No. 662
 File No. 70-63 Drawing No. _____
 Date Dec. 26 1945 Scale 1" = 400'

STATE OF WEST VIRGINIA
 DEPARTMENT OF MINES
 OIL AND GAS DIVISION
 CHARLESTON

WELL LOCATION MAP
 FILE NO. KAN-1261

+ Denotes location of well on United States Topographic Maps, scale 1 to 62,500, latitude and longitude lines being represented by border lines as shown.
 - Denotes one (1) ft. spaces on border line of original tracing.

Donald W. H.

WEST VIRGINIA DEPARTMENT OF MINES
OIL & GAS DIVISION
W E L L R E C O R D

Permit No. Kan 1261
Clendenin Quad.
Company
Address
Farm
Location
Well No.
District
Surface
Mineral
Commenced
Completed
Volume
Salt Water

Glenn Dearth
Charleston, W.Va.
George G. Bryant Acres 91.4
Pinch Cr.
Elev. 886.15
Elk Kanawha County
Geo. Bryant, Pinch, W.Va.
Geo. G. Bryant, Pinch, W.Va.
Feb. 9, 1946
June 29, 1946
Dry Hole
968 & 1620

Dry Hole
CASING & TUBING

| | | | |
|--|--------|-----|------|
| | 16 | | 15 |
| | 13 3/8 | 451 | 0 |
| | 10 1/2 | | 1414 |
| | 8 5/8 | | 2031 |
| | 7 | | 5100 |

CASING CEMENTED 7" 150'

| | | | |
|-----------------------|------|------|-----------------------|
| Red Rock | 0 | 25 | |
| Blue Rock | 25 | 60 | |
| Sand | 60 | 135 | |
| Slate & Shells | 135 | 195 | |
| Sand, Slate & Shells | 195 | 485 | |
| Lime | 485 | 500 | |
| Sand & Slate | 500 | 652 | |
| Lime | 652 | 672 | |
| Sand, Slate, & Shells | 672 | 906 | |
| 1st Salt Sand | 906 | 1132 | |
| Sand & Slate | 1132 | 1414 | Gas 944 |
| Slate & Red Rock | 1414 | 1532 | |
| Little Lime | 1532 | 1585 | |
| Pencil Cave | 1585 | 1589 | |
| Big Lime | 1589 | 1775 | |
| Injun Sand | 1775 | 1833 | |
| Squaw Sand | 1833 | 1900 | |
| Slate | 1900 | 1904 | |
| Weir | 1904 | 2018 | |
| Slate | 2018 | 2027 | |
| Lime Shells | 2027 | 2033 | |
| Slate & Shells | 2033 | 3005 | |
| Blue Lime | 3005 | 3785 | |
| Brown Lime | 3785 | 3810 | |
| Gray Slate | 3810 | 3878 | |
| Brown Shale | 3878 | 4042 | |
| Blue Gray Lime | 4042 | 4140 | |
| White Slate | 4140 | 4225 | Oil and Gas 4225 show |
| Black Slate | 4225 | 4275 | |
| White Slate | 4275 | 4610 | |
| Brown Shale | 4610 | 4970 | |
| White Slate | 4970 | 5015 | |
| Brown Shale | 5015 | 5060 | |
| Corniferous Lime | 5078 | 5204 | |
| Oriskany | 5204 | 5246 | |

| | |
|-------|------|
| 5078 | 5204 |
| 886 | 896 |
| ----- | |
| 4192 | 4318 |