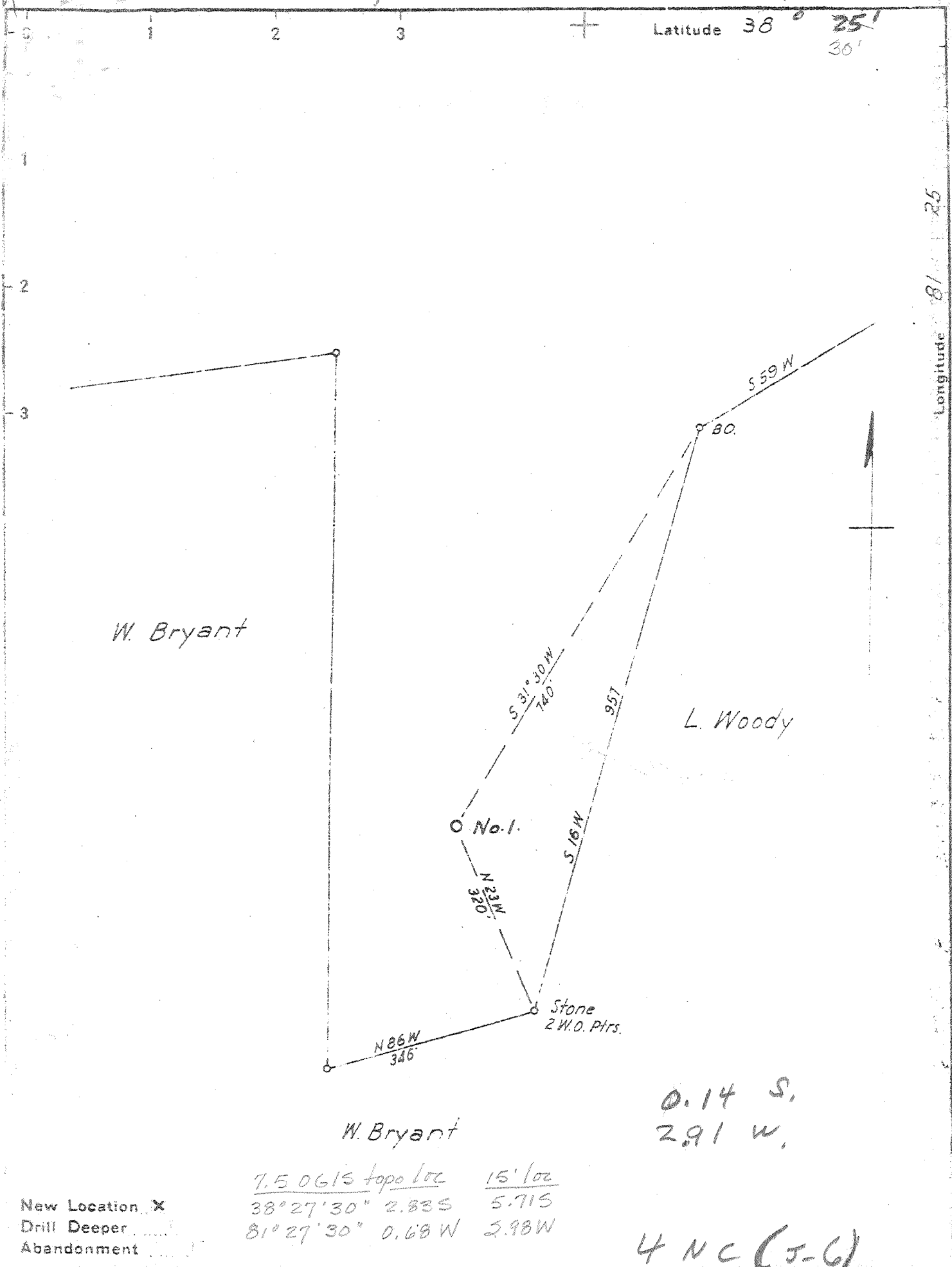


P



New Location X  
Drill Deeper  
Abandonment

7.50615 topo loc 15' loc  
38° 27' 30" 2.835 5.715  
81° 27' 30" 0.68 W 2.98 W

4 NC (J-G)

Company HAROLD H. NEFF, AGENT  
 Address 608 SECURITY BLDG. CHARLESTON, W. VA.  
 Farm S A GREGG  
 Tract \_\_\_\_\_ Acres 38 1/8 Lease No. \_\_\_\_\_  
 Well (Farm) No. 1 Serial No. \_\_\_\_\_  
 Elevation (Spirit Level) 855 B.  
 Quadrangle CLENDENIN - W.C.  
 County KANAWHA District ELK  
 Engineer Robert C. Rofferty  
 Engineer's Registration No. OHIO 2504  
 File No. \_\_\_\_\_ Drawing No. \_\_\_\_\_  
 Date JUNE 17 1946 Scale 1" = 200'

STATE OF WEST VIRGINIA  
DEPARTMENT OF MINES  
OIL AND GAS DIVISION  
CHARLESTON

WELL LOCATION MAP  
FILE NO KAN-1293

plotted on map with -1295

+ Denotes location of well on United States Topographic Maps, scale 1 to 62 500. Latitude and longitude lines being represented by border lines as shown.

- Denotes one inch spaces on border line of original tracing.

WEST VIRGINIA DEPARTMENT OF MINES  
OIL & GAS DIVISION  
W E L L R E C O R D

*oil show*

Permit No. Kan 1293  
Glendenin Quad.  
Company  
Address  
Farm  
Location  
Well No.  
District  
Surface  
Mineral  
Commenced  
Completed  
Not shot  
Volume  
Rock Pressure  
Fresh Water  
Salt Water

Harold H. Neff, Agent  
608 Security Bldg., Charleston, W.Va.  
S.A. Gregg      Acres      16      39      39  
Pinch Creek      13 3/8      579  
One ( 1 )      Elev. (814 L)      10 1/2      1615      1615  
Elk      Kanawha County      8 5/8      2025      2025  
W. Bryant, R.F.D. #1, Elkview, W.Va.      6 5/8      5045      5045  
S. A. Gregg et al, Lakeland, Fla.      2      5163      5163  
7-19-46  
11-15-46

Gas Well  
CASING & TUBING

No Packer

Perf. top      5147  
Perf. bot      5163

Casing cemented:  
6 5/8      31'      10-31-46

Coal at 255'; 258'

Clay Y	0	17	-Corniferous Lime	5033	5145
Mud Bl	17	28	-Oriskany Sand	5145	5180
Sand Stone Gr	28	60	T.D.		5180
Slate	60	90			
Sand	90	160	Gas 5161-79		
Slate	160	190			
Sand	190	250			
Slate	250	255			
Coal	255	258			
Slate	258	265			
Sand	265	322			
Lime Bk	322	340			
Slate	340	375			
Sand	375	480			
Slate	480	505			
Sand	505	535			
Lime Bk	535	550			
Slate Wh	550	600			
Sand	600	639			
Slate	639	656			
Lime Gr	656	671			
Slate	671	711			
Sand	711	750			
Slate	750	776			
Sand	776	806			
Slate	806	813			
Lime	813	823			
Sand	823	838			
Slate	838	878			
-Salt Sand	878	1085			
Slate	1085	1090			
Lime	1090	1105			
-Salt Sand	1105	1371			
Slate & Shells	1371	1410			
-Maxon Sand	1410	1493			
Slate	1493	1498			
-Little Lime	1498	1535			
-Pencil Cave	1535	1540			
-Big Lime	1540	1738			
-Big Injun	1738	1758	Oil 1743		
-Red Rock	1758	1770			
Lime	1770	1810			
-Squaw Sand	1810	1836	Gas 1830-35		
Lime	1836	1866			
-Woir Sand	1866	1995	Oil 1920		
Slate	1995	2023	Gas 1975-88		
Lime	2023	2028	Oil 1983-88		
Slate & Shells	2028	3345			
Shale Brown	3345	3385			
Slate & Shells	3385	3870			
Shale Brown	3870	4040	Gas 3870-4040		
Slate & Shells	4040	4575			
Shale Brown	4575	5033	Gas 4600		