

STATE OF WEST VIRGINIA
DEPARTMENT OF ENVIRONMENTAL PROTECTION
OFFICE OF OIL AND GAS



AFFIDAVIT OF PLUGGING AND FILLING WELL

AFFIDAVIT SHOULD BE IN TRIPLICATE, one copy mailed to the Department, one copy to be retained by the Well Operator and the third copy (and extra copies if required) should be mailed to each coal operator at their respective addresses.

Farm name: Ursula C. Mudd, et al Operator Well No.: Coco B 7078

LOCATION: Elevation: 752.9 Quadrangle: Blue Creek, WV
District: Elk County: Kanawha
Latitude: 5071 Feet South of 38 Deg. 25 Min. 00 Sec.
Longitude: 6278 Feet West of 81 Deg. 27 Min. 30 Sec.

Well Type: OIL _____ GAS X

Company Columbia Gas Transmission, LLC Coal Operator Not operated
1700 MacCorkle Avenue S.E. or Owner _____
Charleston, WV 25314 _____
Agent Maria Medvedeva Coal Operator _____
Permit Issued Date 3.29.2021 or Owner _____

AFFIDAVIT

STATE OF WEST VIRGINIA,
County of Kanawha ss:

RECEIVED
Office of Oil and Gas

Maria Medvedeva and Nathan Salyers being first duly sworn according to law deposited and say that they are experienced in the work of plugging and filling oil and gas wells and were employed by the above named well operator, and participated in the work of plugging and filling the above well say that said work was commenced on the 13th day of July, 2022, and the well was plugged and filled in the following manner: AGG 24 2022
WV Department of Environmental Protection

TYPE	FROM	TO	PIPE REMOVED	LEFT
15.6 ppg Class A Cement	5140 (TD)	5109	N/A	openhole
15.6 ppg Class A Cement	5109	5025	N/A	3-1/2"
15.6 ppg Class A Cement	5025	4957	N/A	3-1/2", 5-1/2"
15.6 ppg Class A Cement	4957	3370	N/A	3-1/2", 5-1/2", 7"
Cast Iron Bridge Plug	3370	3370	N/A	3-1/2", 5-1/2", 7"
15.6 ppg Class A Cement	3370	3358	N/A	CIBP wireline running tool, 3-1/2", 5-1/2", 7"
15.6 ppg Class A Cement	3358	3206	<u>Nathan Salyers</u>	3-1/2", 5-1/2", 7"

See additional plugging data.

Description of monument: 7" casing, 4' above ground level, API number affixed and that the work of plugging and filling said well was completed on the 11th day of August, 2022.

And further deponents saith not. Nathan Salyers
[Signature]



Sworn and subscribe before me this 16 day of August, 2022

My commission expires: June 14, 2023
[Signature]
Notary Public

Affidavit reviewed by the Office of Oil and Gas: [Signature] Title: Inspector DeLegas
01/06/2023

Coco B 7078 Additional Plugging Data (API 47-039-01306)

TYPE	FROM	TO	PIPE REMOVED	LEFT
15.6 ppg Class A Cement	3206	2888	3-1/2"	5-1/2", 7"
Cast Iron Bridge Plug	2888	2888	3-1/2"	5-1/2", 7"
15.6 ppg Class A Cement	2888	1920	3-1/2"	5-1/2", 7"
15.6 ppg Class A Cement	1920	1900	3-1/2"	5-1/2", 7", 8-5/8"
15.6 ppg Class A Cement	1900	1840	3-1/2"	5-1/2", 8-5/8"
15.6 ppg Class A Cement	1840	1501	3-1/2"	5-1/2"
15.6 ppg Class A Cement	1501	1480	3-1/2"	5-1/2", 10-3/4"
Cement Retainer	1480	1480	3-1/2"	5-1/2", 10-3/4"
15.6 ppg Class A Cement	1480	1270	3-1/2"	5-1/2", 10-3/4"
Cement Retainer	1270	1270	3-1/2"	5-1/2", 10-3/4"
15.6 ppg Class A Cement	1270	281	3-1/2"	5-1/2", 10-3/4"
15.6 ppg Class A Cement	281	0	3-1/2"	5-1/2", 10-3/4", 13-3/8" *
* Note - topped off all annuluses with cement to surface				
** Note - refer to attached wellbore diagram for additional wellbore details				

August 24 2022



ORIGINAL

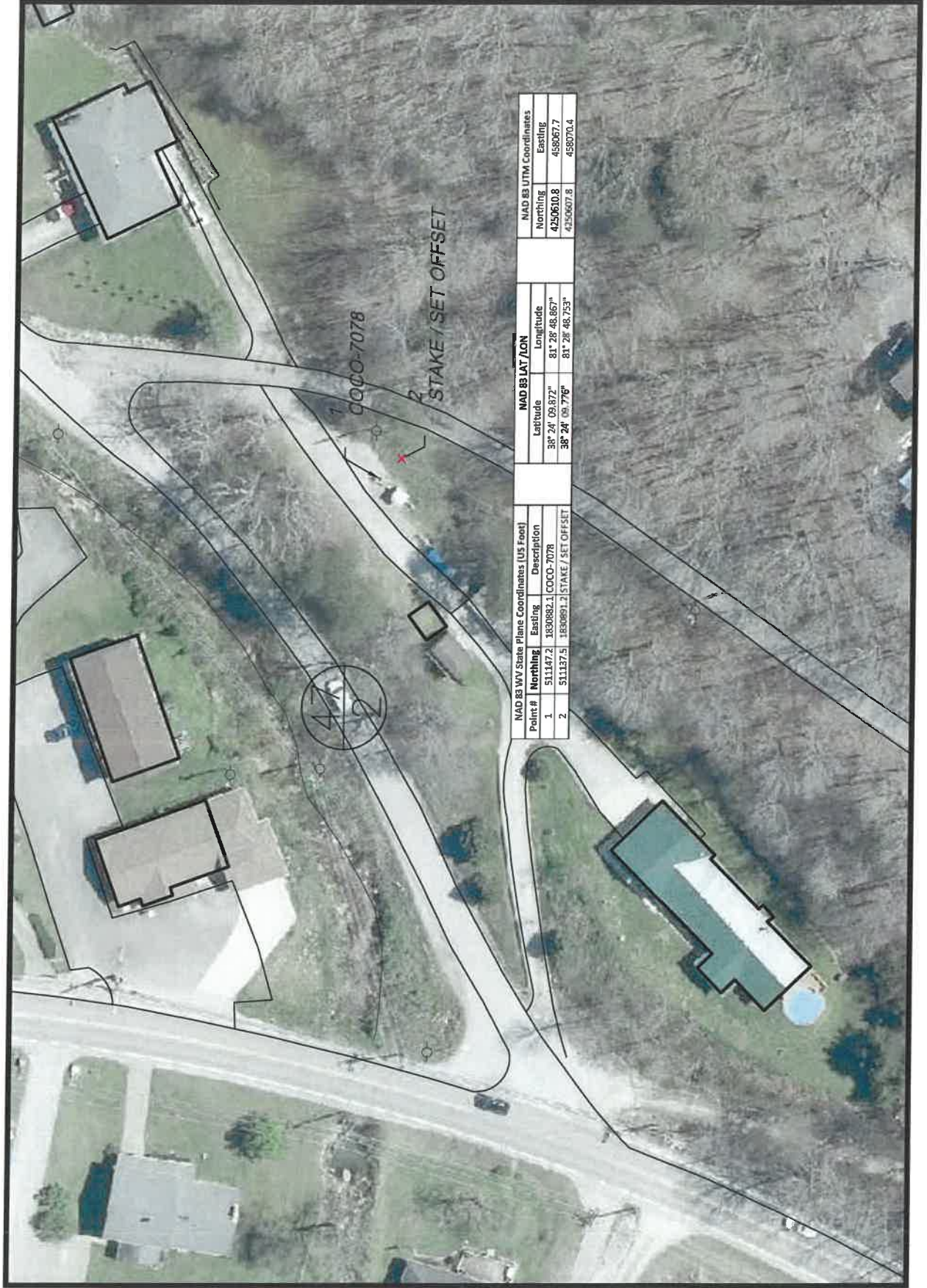
RECEIVED
Office of Oil and Gas

AUG 24 2022

WV Department of
Environmental Protection

01/06/2023

COCO B 7078
 OFFSET EXHIBIT
 7/6/2022

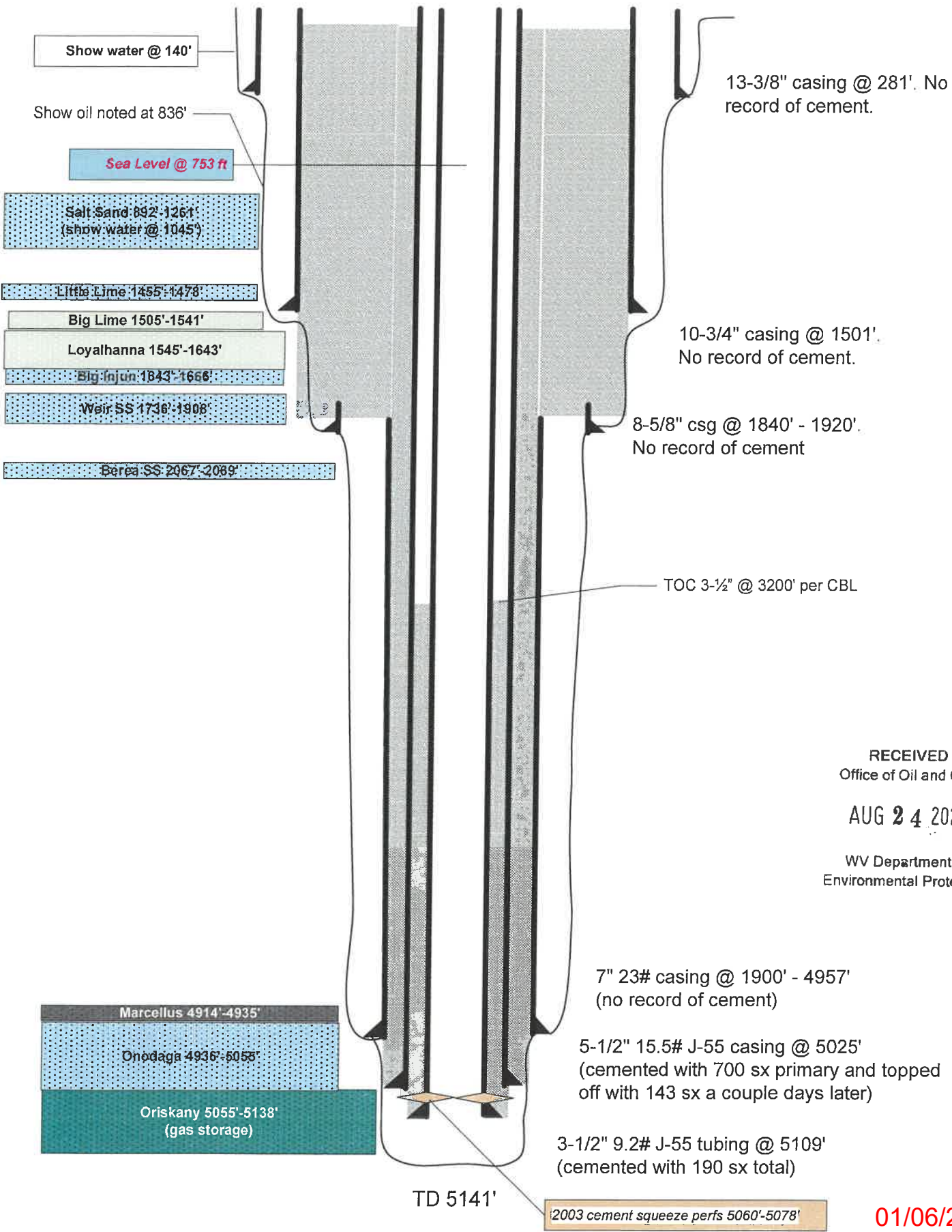


NAD 83 WV State Plane Coordinates [US Foot]			NAD 83 LAT / LON		NAD 83 UTM Coordinates		
Point #	Northing	Easting	Description	Latitude	Longitude	Northing	Easting
1	511147.2	183082.1	COCO-7078	38° 24' 03.872"	81° 28' 48.867"	4250610.8	458067.7
2	511137.5	183091.1	STAKE / SET OFFSET	38° 24' 03.776"	81° 28' 48.753"	4250607.8	458070.4

~ not to scale ~

COCO B 7078

Prior to P&A
(as of 10/14/2020)



RECEIVED
 Office of Oil and Gas
 AUG 24 2022
 WV Department of
 Environmental Protection

01/06/2023

~ not to scale ~

COCO B 7078

Post P&A

(as of 08/11/2022)

Sea Level @ 753 ft

Show water @ 140'

Show oil noted at 836'

Salt Sand 892'-1267'
(show water @ 1045')

Little Lime 1455'-1478'

Big Lime 1505'-1541'

Loyalhanna 1545'-1643'

Big Iron 1643'-1668'

Wair SS 1738'-1908'

Berea SS 2067'-2069'

Shot 5-1/2" & 7" csgs @
2876' - 2878', 2320' - 2322',
2070' - 2072', 1800' - 1802',
pressure out, cannot inject.

Bridge plug @ 2888'

Bridge plug @ 3370'

Dark grey cement indicates
cement installed during P&A.

Light grey cement indicates
existing cement prior to P&A.

Marcellus 4914'-4935'

Onondaga 4936'-5055'

Oriskany 5055'-5138'
(gas storage)

TD 5140'

13-3/8" csg @ 281'

No record of cement,
Grouted from surface

RECEIVED
Office of Oil and Gas

AUG 24 2022

WV Department of
Environmental Protection

Cement Retainer @ 1270'

Established circulation b/w 10-3/4"
x 13-3/8" at perms 1350 - 1352'

10-3/4" casing @ 1501'.
No record of cement.

Cement Retainer @ 1480'

Inject 8 bbls @ 1510 - 1512' perf

8-5/8" csg @ 1840' - 1920'
(no record of cement, partially pulled in 1952)

3-1/2" casing stub @ 3200'

TOC 3-1/2" @ 3200' per CBL

Unable to release running tool from plug. Pulled out of
rope socket. Top of wireline running tools tagged at 3358'.

Cable Head	1.38" OD	Length 1.33'
Weight Bar	1.68" OD	Length 7'
CCL	1.68" OD	Length 1.70'
Atlas to Go	1.38" OD	Length .033'
Adapter	1.38"	Length .05'
Setting tool		Length 8.75'
Plug		Length 2.75'

5-1/2" CBL ran on 07.26.22 from 3200' to
surface, found cement from 1850' - 1780'
and 400' - 150', ratty stringers to surface.

Cannot CBL all of the 5-1/2" string due to 3-
1/2" casing being in the way. Unconfirmed
cement top from the primary job.

7" 23# casing @ 1900' - 4957'
(no record of cement, partially pulled in 1952)

5-1/2" 15.5# J-55 casing @ 5025'
(cemented with 700 sx primary and topped
off with 143 sx a couple days later)
3-1/2" 9.2# J-55 tubing @ 5109'
(cemented with 190 sx total)

2003 run and cement 3-1/2" casing, perf 5060' - 5078' with 72 bbls

01/06/2023