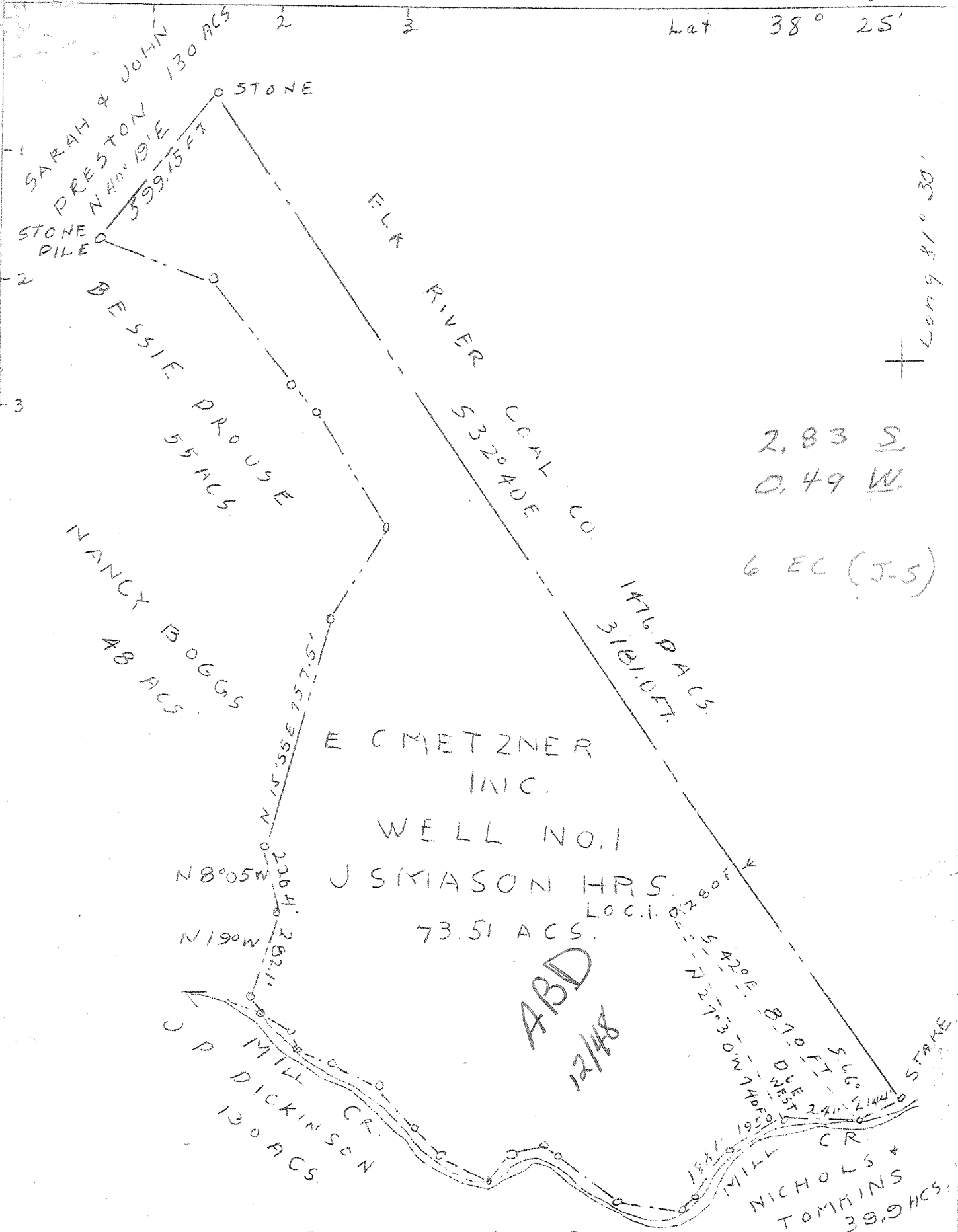


Lat 38° 25'

Long 81° 30'



2.83 S
 0.49 W
 6 EC (J-5)

NEW LOCATION X COAL NOT OPERATED.

COMPANY E. C. METZNER, INC.
 ADDRESS CHARLESTON, W. VA.
 FARM J. S. MASON HRS.
 TRACT 73.51 ACRES LEASE NO. _____
 WELL (FARM) NO. 1 SERIAL NO. _____
 ELEVATION (S.L.) 799.00.
 QUADRANGLE CHARLESTON - EC
 COUNTY KANAWHA ELK DISTRICT
 ENGINEER C. E. KREBS
 ENGINEER'S REG. NO. 9
 FILE NO. 11.976 DRAWING NO. _____
 DATE 8/12/46 SCALE 1"=400'

STATE OF WEST VIRGINIA
 DEPARTMENT OF MINES
 OIL AND GAS DIVISION
 CHARLESTON
 WELL LOCATION MAP
 FILE NO. KAN -1307

✚ DENOTES LOCATION OF WELL ON U.S. TOPOGRAPHIC MAPS, SCALE 1 TO 62,500, LATITUDE AND LONGITUDE LINES BEING REPRESENTED BY BORDER LINES AS SHOWN.
 - DENOTES ONE INCH SPACES ON BORDER LINE OF ORIGINAL TRACING.

Deep Well

WEST VIRGINIA DEPARTMENT OF MINES
OIL & GAS DIVISION
W E L L R E C O R D

Permit No. Kan 1307		Gas Well
Charleston Quad.		CASING & TUBING
Company	E.C. Metzner Inc.	
Address	Peoples Bldg., Charleston	13 45 45
Farm	J.S. Mason Heirs A 73	10 485
Location	Mill Creek	8½ 1618
Well No.	1 Elev. 799.1'	6 5/8 2127
District	Elk Kanawha County	5 3/16 4918
Surface	J.S. Mason Hrs., Villa, W.Va.	
Mineral	Same	
Commenced	Oct. 23, 1946	
Completed	March 28, 1947	
Date shot	4-3-47 Depth 5010 to 5072	
	with 425# EL 409 and 75# Gel.	
Open flow	19/10ths W in 2"	
Volume	184,000 C.F.	
Water	30' 2 BPH; 110' 3 BPH; 155' 10 BPH	
	160' HFW; 785' 2½ BPH; HFW 870'	

Surface	0	10	Slate & Shells	2147	3250
Sand	10	20	Slate & Shells	3250	3330
Slate	20	23	Slate & Shells	3330	3650
Sand	23	34	Brown Shale	3650	3700
Slate	34	45	White Slate	3700	3720
Lime	45	75	Brown Shale	3720	3990
Slate	75	100	White Slate	3990	4470
Lime	100	130	Shale	4470	4540
Slate	130	135	Brown Shale	4540	4780
Sand	135	175	White Slate	4780	4825
Slate	175	270	Brown Shale	4878	4902
Sand	270	295	Corniferous Lime	4902	5009
Slate	295	370	Oriskany Sand	5009	5038
Sand	370	390	Lime	5038	5041
Slate	390	400	Sandy Lime	5041	5051
Sand	400	454	Oriskany	5051	5075
Slate & Shells	454	642	Total Depth		5075
Sand	642	675			
Slate	675	687	Gas show 1736'		
Sand	687	740	Gas 1780'-1786' 7/10 W 1" 30 M		
Slate	740	742	Oil show 1805-1819'		
Sand	742	965	Gas show 2066'		
Slate & Shells	965	1018			
✓ Salt Sand	1018	1220	Oriskany gas 5014-5015 4/10 W 2" 84 M		
Slate	1220	1245	Test B.S. 10/10 W 1" 33 M		
✓ Sand	1245	1271	1 hr. A.S. 30/10 W 2" 231 M		
Slate	1271	1288	18 hrs. A.S. 19/10 W 2" 184 M		
✓ Sand	1288	1337	Open flow 184,000		
Slate	1337	1348			
Red Rock	1348	1365			
Slate & Shells	1365	1378			
✓ Maxon Sand	1378	1400			
Slate	1400	1412			
✓ Little Lime	1412	1443			
Slate	1443	1458			
Lime Shells	1458	1464			
✓ Slate	1464	1478			
✓ Big Lime	1478	1617			
✓ Big Injun - 305	1617	1655			
✓ Red Rock - 304	1655	1670			
Slate & Shells	1670	1730			
Shale	1730	1736			
Slate & Shells	1736	1771			
Sand	1771	1790			
Slate	1790	1805			
Sand	1805	1819			
Slate	1819	1821			
Sand	1821	1860			
Brown Shale	2054	2060			
Berea	2060	2068			
Slate & Shells	2068	2125			
Lime	2125	2147			

4902 5009