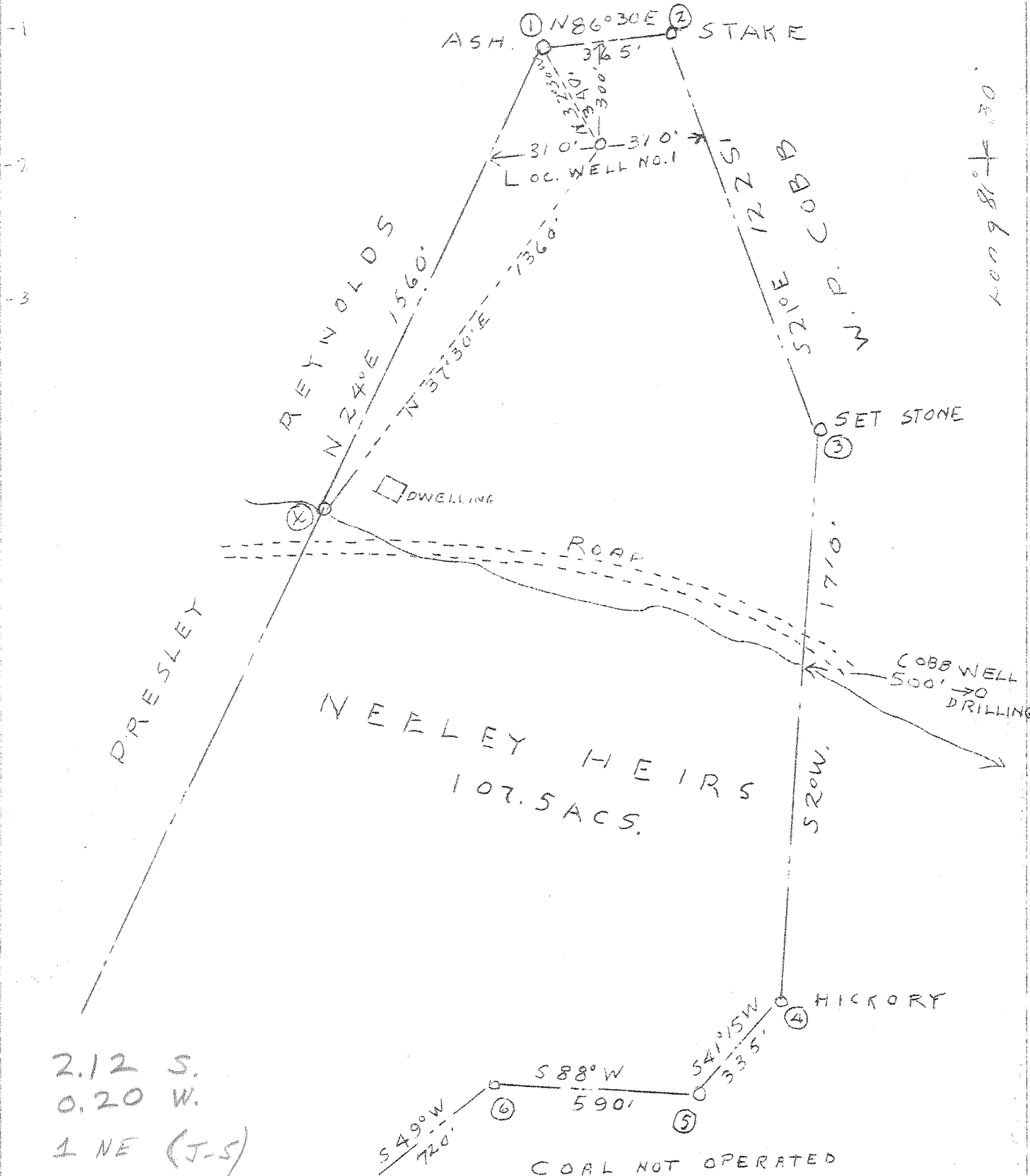
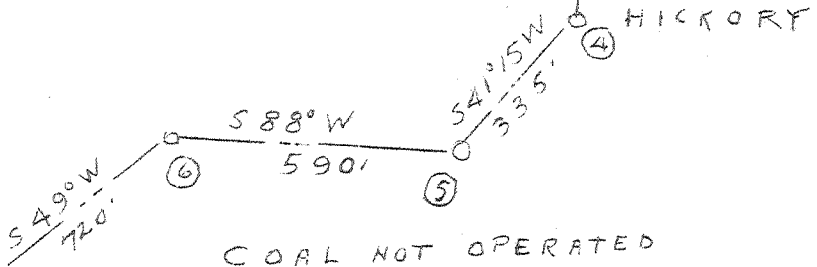


Lat. 38° 30'



2.12 S.
 0.20 W.
 1 NE (J-S)



NEW LOCATION X

COMPANY	E. C. METZNER, INC.
ADDRESS	CHARLESTON, W. VA.
FARM	NEELEY HEIRS
TRACT	107.5 ACRES
LEASE NO.	
WELL (FARM) NO.	1
SERIAL NO.	
ELEVATION (S.L.)	914.00
QUADRANGLE	CHARLESTON - NE
COUNTY	KANAWHA
DIST.	ELK
ENGINEER	C. E. KREBS
ENGINEER'S REG. NO.	9
FILE NO.	12002.A
DRAWING NO.	
DATE	10/28/46
SCALE	1" = 400'

STATE OF WEST VIRGINIA
 DEPARTMENT OF MINES
 OIL AND GAS DIVISION
 CHARLESTON
 WELL LOCATION MAP
 FILE NO. KAN - 1322

+ DENOTES LOCATION OF WELL ON U.S. TOPOGRAPHIC MAPS, SCALE 1 TO 62,500. LATITUDE AND LONGITUDE LINES BEING REPRESENTED BY BORDER LINES AS SHOWN.

- DENOTES ONE INCH SPACES ON BORDER LINE OF ORIGINAL TRACING.

6-6 192 Deep Well,

WEST VIRGINIA DEPARTMENT OF MINES
OIL & GAS DIVISION
W E L L R E C O R D

Gas Well
CASING & TUBING

Permit No. Kan 1322
Charleston Quad.

Company

E.C. Metzner

Address

Peoples Bldg., Charleston, W.Va. 10

594'1 Same

Farm

Neeley Heirs A 107.5

8 1/2 1682'7 Same

Location

6 5/8 5094 Same

Well No.

1 Elev. 914'

District

Elk Kanawha County

Surface

Neeley Hrs.

c/o Ada Moles, Charleston, W.Va.

Mineral

Neeley Hrs.

Commenced

Nov. 1, 1946

Completed

April 1947

Date shot

5214 to 5234 with EL 409

Fresh Water

1170'

Surface	0	50	Gas 5215 (first) 10/10 W in 2" 5217'
Lime	50	120	14/10 W in 2" 5219 (4 1/2' good pay
Mud	120	165	9/10 in 2" 5226'
Lime	165	180	
Slate	180	270	Sunday A.M. 9:15. 6/10 W in 2"
Sand	270	300	recommend shooting from 5214 to 5234
Slate	300	350	with EL 409
Sand	350	375	
Slate & Shells	375	380	Monday 1st shot with 200#
Sand	380	400	Tuesday 2nd shot 66 2/3# detonite gel
Slate & Shells	400	450	
Sand	450	525	Test B.S. 4/10" W 2"
Slate	525	550	
Sand	550	605	Wednesday A.M. after shot 9/10 W 2"
Slate & Shells	605	630	133 M
Lime	630	650	
Sand	650	735	
Slate & Sh	735	835	
Sand	835	850	
Slate	850	887	
Lime	887	907	
Sand	960	975	
Lime	975	1070	
Slate	1070	1088	
Lime	1088	1098	
✓ Salt Sand	1098	1410	
✓ Blue Slate	1410	1473	
✓ Salt Sand	1473	1525	
✓ Maxon	1525	1621	
✓ Little Lime	1621	1656	
✓ Pencil Cave	1656	1662	
✓ Big Lime	1662	1823	Gas 1715'
✓ Big Injun	1823	1873	
Slate	1873	1880	
✓ Squaw	1880	1962	
Slate & Shells	1962	3465	
Brown Shale	3465	3512	
Slate & Shells	3512	3885	
Brown Shale	3885	3895	
Slate & Shells	3895	3990	
Brown Shale	3990	4040	
Slate & Shells	4040	4750	
✓ Brown Shale	4750	5044	
White Slate	5044	5079	
✓ Black Shale	5079	5087	
✓ Corniferous Lime	5087	5205	
✓ Oriskany	5205	5242	
✓ Black Lime - M	5242		
Total Depth	5268		
Filled back to 5234			
Gas 1715'			