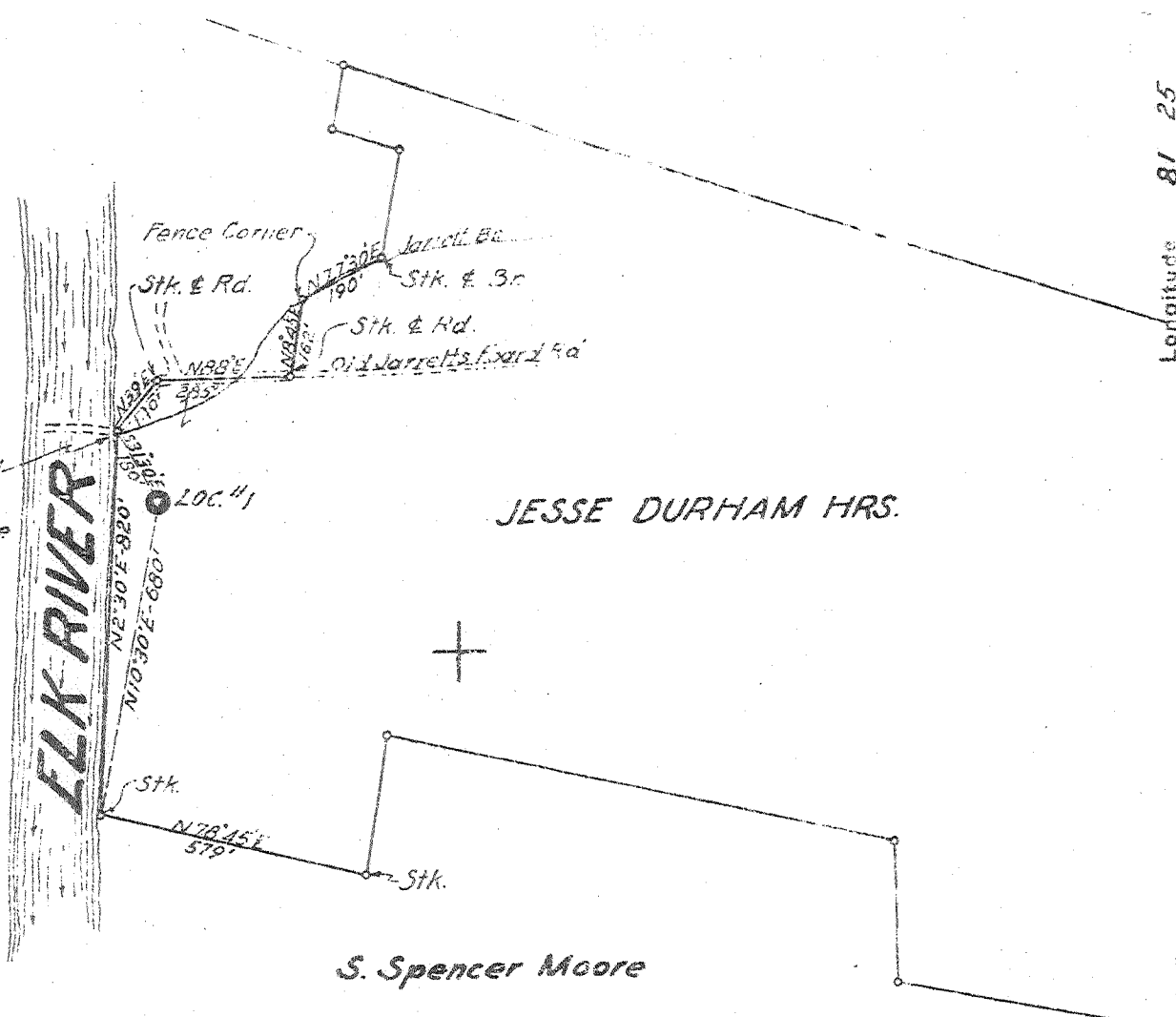


Latitude 38 30

Longitude 81 25



Stake & Road
at mo. Jarrett
Br. at River edge

JESSE DURHAM HRS.

S. Spencer Moore

4.8 S
3.88 W

7.5 pop. map loc	15' loc
38°27'30"	1.86S
81°27'30"	1.58W
	4.73S
	3.84W

3 SW (J-6)

New Location X
Drill Deeper
Abandonment

Company W. E. BURCHETT, ET AL
 Address RIVER VIEW APTS., KANAWHA BLVD. CHARLESTON, W. VA.
 Farm JESSE DURHAM, HRS.
 Tract _____ Acres 96 Lease No. _____
 Well (Farm) No. 1 Serial No. 1
 Elevation 650 (BAR)
 Quadrangle CLENDENIN - NW
 County KANAWHA District ELK
 Engineer _____
 Engineer's Registration No. 662
 File No. _____ Drawing No. _____
 Date DEC. 19, 1946 Scale 1" = 400'

STATE OF WEST VIRGINIA
DEPARTMENT OF MINES
OIL AND GAS DIVISION
CHARLESTON

WELL LOCATION MAP
FILE NO. KAN-1353

+ Denotes location of well on United States Topographic Maps, scale 1 to 62,500, latitude and longitude lines being represented by border lines as shown

- Denotes one inch spaces on border line of original tracing.

Deep Well

WEST VIRGINIA DEPARTMENT OF MINES
OIL & GAS DIVISION
W E L L R E C O R D

Permit No. Kan 1353

Dry Hole
casing & tubing

Clendenin Quad.

Company

W.E. Burchett

Address

Capitol Bldg., Chas., W.Va.

13 394 394

Farm

Jesso Burham Acres 96

10 1400 1400

Location

Jarretts Branch of Elk River

8½ 1871 1871

Well No.

1 Elev. 650' B

6 5/8 4900 4900

District

Elk Kanawha County

Surface

Mineral

Commenced

Completed

June 1, 1947

Volume

5,000 C.F.

Rock Pressure

Water

75' H.F.

Surface	0	65	Dark Shale	4450	4788
Slate	65	85	White Slate	4788	4828
Sand	85	125	Brown Shale	4828	4886
Slate	125	135	Cornf. Lime	4886	5018
Sand	135	185	Oriskany	5018	5055
Slate	185	250	Lime	5055	5065
Sand	250	300	Sand	5065	5076
Slate	300	325	Lime	5076	5082
Sand	325	350	Total Depth		5082
Slate	350	355			
Sand	355	383	Show oil 5032		
Slate	383	387			
Sand	387	400			
Slate	400	425			
Sand	425	450			
Lime	450	460			
Slate	460	475			
Sand	475	490			
Slate	490	518			
Sand	518	550			
Slate	550	570			
Sand	570	580			
Slate	580	635			
Sand	635	665			
Slate	665	795			
Sand	795	840			
Slate	840	860			
Sand	860	903			
Slate	903	917			
Sand	917	1020			
Slate	1020	1025			
Sand	1025	1233			
Slate	1233	1255			
Red Rock	1255	1275			
Slate	1275	1283			
Maxon Sand	1283	1322			
Slate	1322	1325			
Lime	1325	1335			
Slate	1335	1343			
Lime	1343	1347			
Slate	1347	1351			
Gritty Lime	1351	1358			
Slate	1358	1364			
Gritty Lime	1364	1370			
Slate	1370	1375			
Lime	1375	1380			
Slate - P. Co.	1380	1385			
Big Lime	1385	1424			
Slate Break	1424	1432			
Lime	1432	1560			
Injun	1560	1618	show gas 1560		
Broken Lime	1618	1640			
Red Sand - S. Co.	1640	1657			
Slate Shells	1657	3718	show gas at 3750		
Brown Shale	3718	3865			
White Slate	3865	4450			

4886	5018	5076
650	650	650
4236	4368	4426