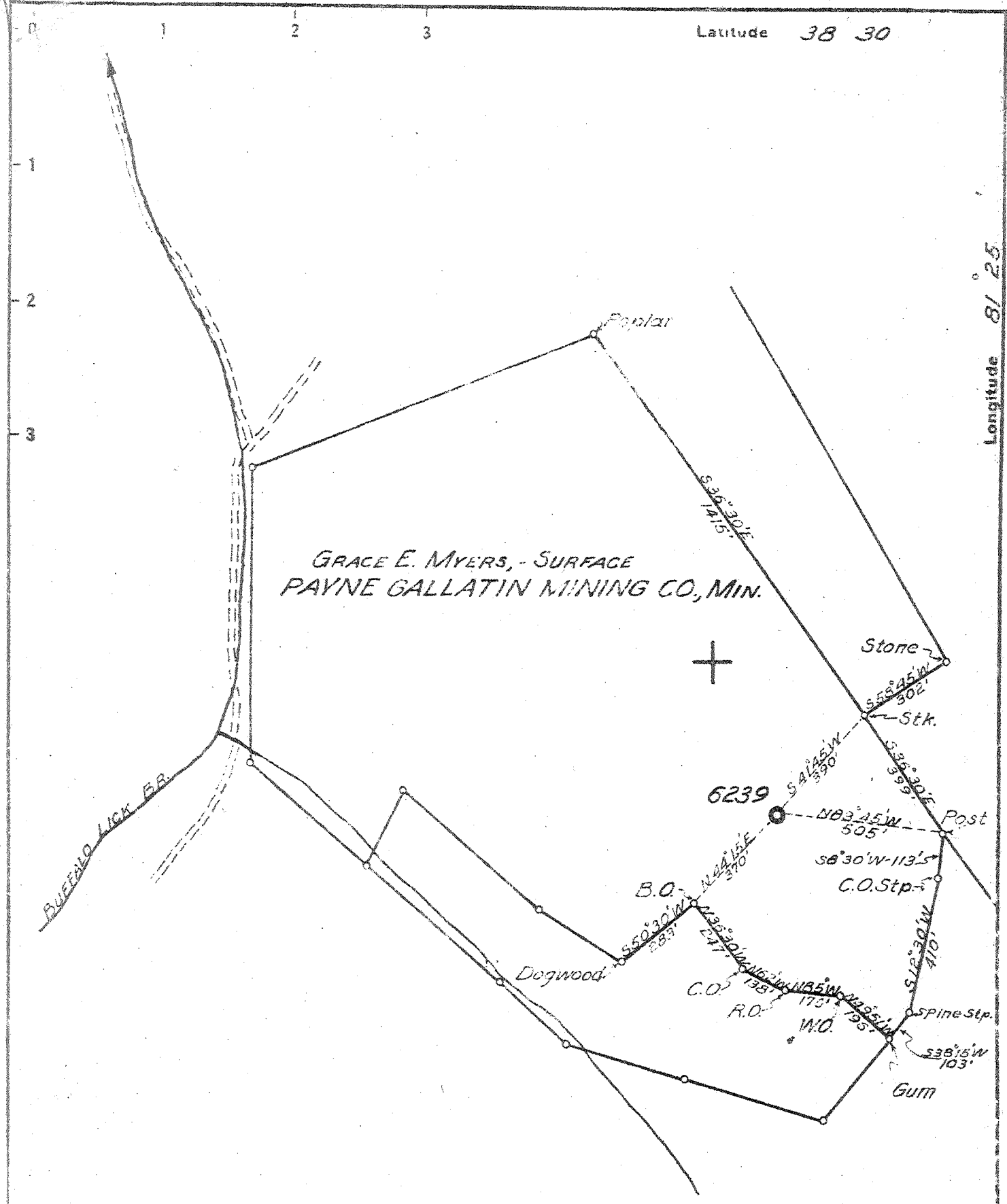


P



GRACE E. MYERS, - SURFACE  
PAYNE GALLATIN MINING CO., MIN.



7.5' OGIS topo loc	15' loc	
38° 27' 30" 1.98 S.	4.86 S	
81° 25' 00" 2.16 W	2.16 W	

4.96 S.  
2.16 W.  
3 SC (J-6)

New Location... X  
Drill Deeper...  
Abandonment...

Company UNITED FUEL GAS CO.  
 Address CHARLESTON, W. VA.  
 Farm PAYNE GALLATIN MINING CO.  
 Tract 12-53.5 Acres 15 Lease No. 44608  
 Well (Farm) No. 5 Serial No. 6239  
 Elevation (Spirit Level) 1045.5'  
 Quadrangle CLENDENIN - NW  
 County KANAWHA District ELK  
 Engineer [Signature]  
 Engineer's Registration No. 662  
 File No. 70-63 Drawing No. [Blank]  
 Date AUGUST 25, 47 Scale 1" = 400'

STATE OF WEST VIRGINIA  
DEPARTMENT OF MINES  
OIL AND GAS DIVISION  
CHARLESTON

WELL LOCATION MAP  
FILE NO. KAN-1380

+ Denotes location of well on United States Topographic Maps, scale 1 to 62,500, latitude and longitude lines being represented by border lines as shown.  
 - Denotes one inch spaces on border line of original tracing.

66-215 Deep Well

WEST VIRGINIA DEPARTMENT OF MINES  
OIL & GAS DIVISION  
W E L L R E C O R D

Permit No. Kan 1380		Gas Well
Clendenin Quad.		CASING & TUBING
Company	United Fuel Gas Co.	
Address	P.O. Box 1273, Charleston 25, W.Va.	13 3/8 45 45
Farm	Payne Gallatin Mining Co. A 42.75 A	10 1/2 1820 1820
Location	Buffalo Lick Branch	8 5/8 2280 2280
Well No.	P.I. 6239 Elev. 1075.42 DF	7 5346 5346
District	Elk Kanawha County	
Surface		Coal at 675' 84"
Mineral	Payne Gallatin Mining Co. et al	
	1510 Kan. Valley Bldg., Chas., W.Va.	
Commenced	9-9-47	
Completed	12-18-47	
Date shot	12-18-47 Depth 5447 to 5521	
	12-20-47 Depth 5452 to 5483	
	with 766 2/3# EL 409 and 125# Gel. 300# EL-409	
	and 75# Gel.	
Open flow	28/10ths W in 7"	
	74/10ths W in 2"	
Volume	363 M, 10 bbls. Oil Shale 2,282 M Shale	
Rock Pressure	1350 lbs. 18 hrs.	
Fresh Water	650' H.F.	

Surface	0	9	Lime	5490	5499
Red Rock	9	75	Sand	5499	5521
Sandy Lime	75	135	Total Depth	5521 SLM	
Red Rock	135	180			
Sand	180	193	Gas 1120	Small show	
Red Rock	193	220	Gas 1885	small show - Big Lime	
Blue Slate	220	290	Gas 1955-1960	Big Lime	
Sand	290	335	Oil 2182-2192	show - Weir	
Slate	335	380	Gas 4312-4318	Oil show	
Sand	380	420	Gas test 74/10 W 2"	363 M Oil Est.	
Slate	420	480	1/2 to 1 bbl. in 2 1/2 hrs.		
Sand	480	500	Gas 5463-5471	70/10 W 2" 353 M	
Slate	500	580	Test 30 Min after opened up	16/10	
Sand	580	615	M 2" 622 M		
Lime	615	625	Test B.S. 14/10 W 2"	158 M	
Slate & Shells	625	675	Shot 12-18-47 with 766-2/3 "	158 M	
Coal	675	682	Shot 12-18-47 with 766 2/3# EL 409		
Slate	682	690	and 125# gel. from 5447-5521.		
Slate & Shells	690	1115	Test A.S. 28/10 W 7" 22#	2,282 M	
Gas Sand	1115	1125	Shot 12-20-47 with 300# EL 409 and 75		
Salt Sand	1125	1607	Gel. from 5452-5483.		
Lime Shells	1607	1636	No results after shot.		
Red Rock	1636	1641	Shut in 1-2-48 in 2" tubing		
Hard Lime	1641	1678			
Slate & Shells	1678	1700			
Red Rock	1700	1706			
Lime	1706	1725			
Maxon	1725	1749			
Slate	1749	1752			
Little Lime	1752	1795			
Pencil Cave	1795	1799			
Lime Shells	1799	1809			
Second Pencil Cave	1809	1816			
Big Lime	1816	1986			
Injun Sand	1986	2030			
Lime	2030	2092			
Weir Sand	2092	2240			
Slate & Shells	2240	3237			
Lime	3237	3345			
Slate & Shells	3345	4200			
Brown Shale	4200	4355			
White Slate	4355	4950			
Brown Shale	4950	5170			
White Slate	5170	5220			
Black Shale	5220	5319			
Corniferous Lime	5319	5450			
Oriskany Sand	5450	5478			
Shale Break	5478	5480			
Oriskany	5480	5490			