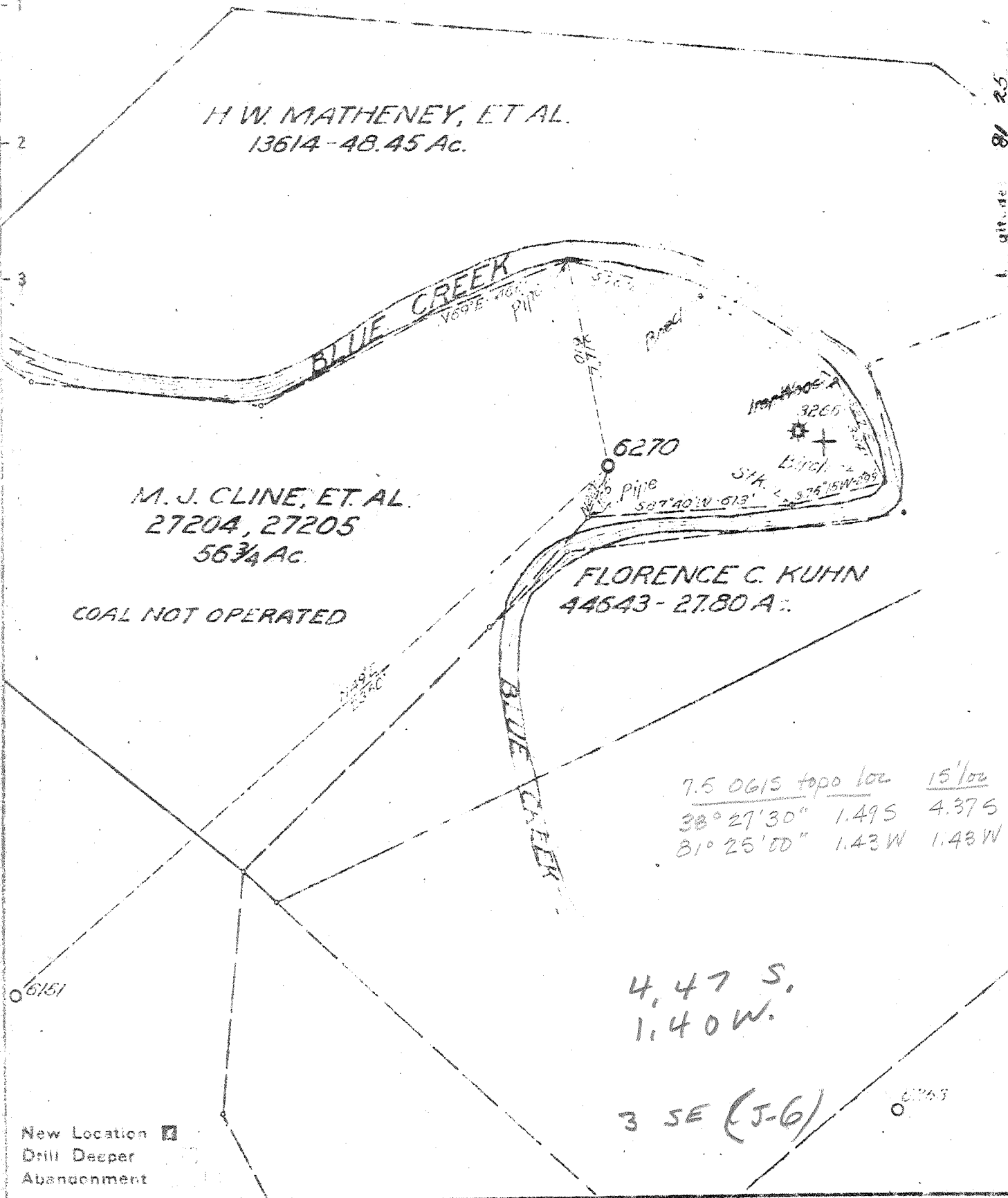


H W. MATHENEY, ET AL.
13614 - 48.45 Ac.

M. J. CLINE, ET AL.
27204, 27205
56 3/4 Ac.

COAL NOT OPERATED

FLORENCE C. KUHN
44643 - 27.80 A.



Company UNITED FUEL GAS CO.
 Address CHARLESTON, W. VA.
 Farm M. J. CLINE, ET AL.
 Tract _____ Acres 133 Lease No. 27205-27204
 Well (Farm) No. 2 Serial No. 6270
 Elevation (Spirit Level) 724.21'
 Quadrangle CLENDENIN - NW
 County KANAWHA District ELK
 Engineer _____
 Engineer's Registration No. 652
 File No. 72-65 Drawing No. _____
 Date NOV-20, 1947 Scale 1" = 400'

STATE OF WEST VIRGINIA
 DEPARTMENT OF MINES
 OIL AND GAS DIVISION
 CHARLESTON

WELL LOCATION MAP
 FILE NO. KAN-1404

+ Denotes location of well on United States Topographic Maps, scale 1 to 62,500. latitude and longitude lines being represented by border lines as shown.

- Denotes one inch spaces on border line of original tracing.

Deep Well

WEST VIRGINIA DEPARTMENT OF MINES
OIL & GAS DIVISION
W E L L R E C O R D

Permit No. Kan 1404 P
Glendenin Quad.

Dry Hole
CASING & TUBING

| | | | |
|-------------|-------------------------------------|--------------------|-----------|
| Company | United Fuel Gas Co. | | |
| Address | P.O. Box 1273, Charleston 25, W.Va. | | |
| Farm | M.J. Cline et al A 130 | 10 $\frac{1}{2}$ " | 1457 1457 |
| Location | Blue Creek | 8 5/8 | 1903 1903 |
| Well No. | 6270 Elev. 727.09 D.F. | 7 | 5000 5000 |
| District | Elk Kanawha County | | |
| Surface | | | |
| Mineral | H.W. Matheny et al, Pinch, W.Va. | | |
| Commenced | 12-8-47 | | |
| Completed | 7-10-48 | | |
| Not shot | | | |
| Open flow | 12/10ths W. 1" | | |
| Volume | 37,000 C.F. | | |
| Fresh Water | 350' H.F. | | |

ABANDONMENT

| | | | |
|-------------------|------|------|------------------|
| Soil | 0 | 10 | |
| Yellow Sand | 10 | 50 | |
| Broken Lime | 50 | 130 | |
| Sand | 130 | 180 | |
| Slate & Shells | 180 | 320 | |
| Sand | 320 | 365 | |
| White Slate | 365 | 390 | |
| Black Slate | 390 | 490 | |
| Gray Lime | 490 | 515 | |
| Black Slate | 515 | 580 | |
| Gray Lime | 580 | 640 | |
| Black Slate | 640 | 670 | |
| Black Lime | 670 | 805 | |
| Sand | 805 | 868 | |
| Lime | 868 | 900 | |
| Sand | 900 | 970 | |
| Lime Shell | 970 | 980 | |
| Broken Form | 980 | 1105 | |
| White Sand | 1105 | 1223 | |
| Black Slate | 1223 | 1250 | |
| White Lime | 1250 | 1305 | |
| Slate | 1305 | 1330 | |
| Red Rock | 1330 | 1333 | |
| Slate | 1333 | 1440 | |
| Pencil Cave | 1440 | 1450 | |
| Big Lime | 1450 | 1615 | |
| Slate & Shells | 1615 | 1670 | |
| Big Injun | 1670 | 1680 | |
| Sand <i>squaw</i> | 1680 | 1709 | |
| Slate & Shells | 1709 | 1818 | |
| Sand <i>well</i> | 1818 | 1865 | |
| Slate & Shells | 1865 | 1895 | |
| Lime | 1895 | 2005 | |
| Slate | 2005 | 2025 | |
| Black Lime | 2025 | 2253 | |
| Slate & Shells | 2250 | 3750 | |
| Brown Shale | 3750 | 3830 | |
| Slate & Shells | 3830 | 4032 | |
| White Slate | 4022 | 4508 | Gas 4390 no test |
| Brown Shale | 4508 | 4533 | |
| Slate & Shells | 4533 | 4630 | |
| Brown Shale | 4630 | 4975 | |
| Corniferous Lime | 4975 | 5127 | |
| Oriskany Sand | 5127 | 5162 | |
| Lime <i>H</i> | 5162 | 5190 | |

Gas 5140 12/10 W 1" 37,000