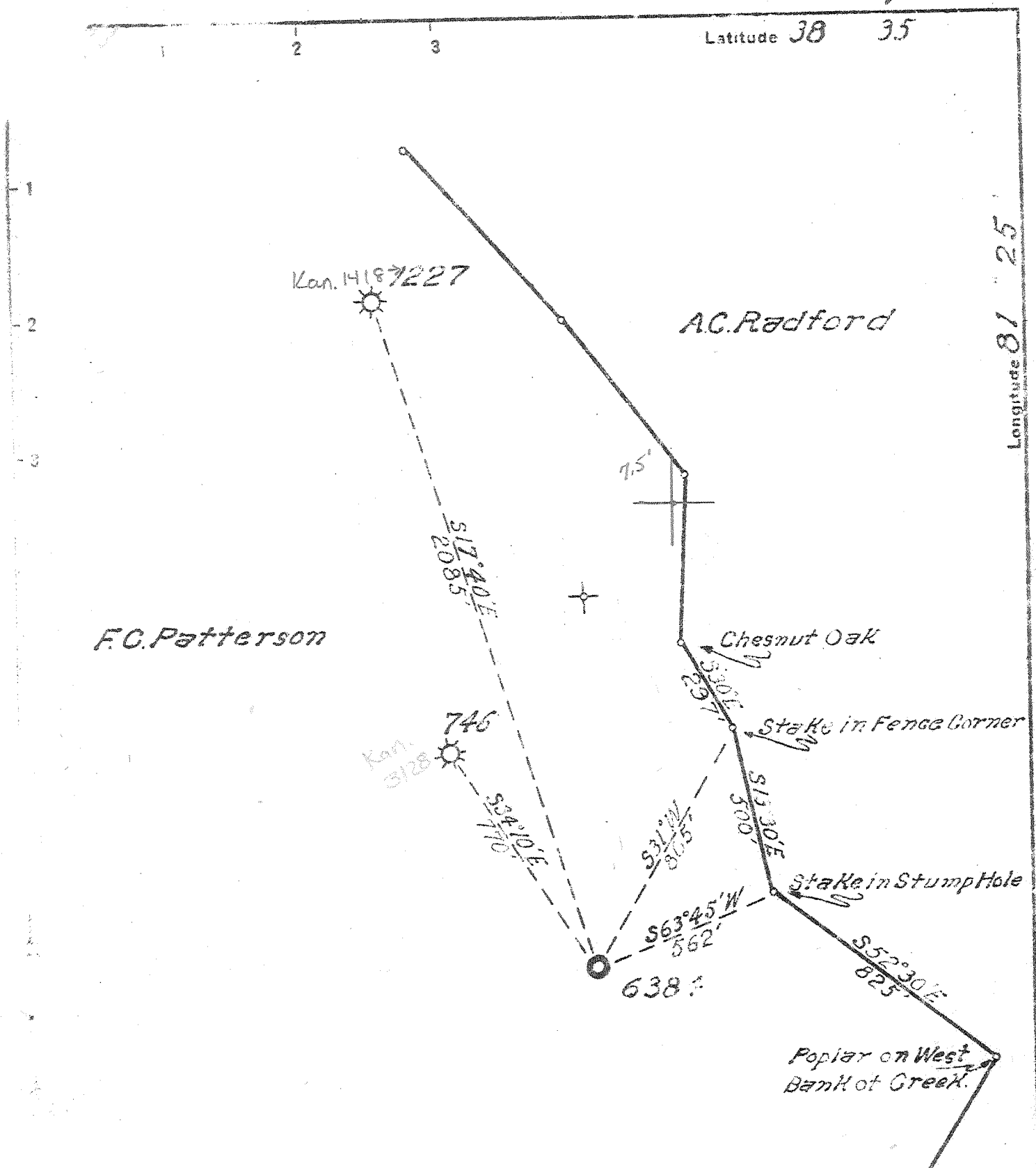


P



$\frac{0675 \ 75 \ 100}{38^{\circ}32'30'' \ 1375 \ 4.255}$
 $\frac{15'}{81^{\circ}27'30'' \ 1000 \ 3.250}$

$\frac{4.3'S}{3.31'W}$

9 SW (I-6)

New Location X
 Drill Deeper
 Abandonment

Company UNITED FUEL GAS CO.
 Address CHARLESTON, W.VA.
 Farm F.C. PATTERSON
 Tract _____ Acres 137 Lease No. 826
 Well (Farm) No. 3 Serial No. 6384
 Elevation (Spirit Level) 802.34
 Quadrangle WALTON - SW
 County KANAWHA District ELK
 Engineer _____
 Engineer's Registration No. 662
 File No. 70-71 Drawing No. _____
 Date JULY 1, 1918 Scale 1" = 400'

STATE OF WEST VIRGINIA
 DEPARTMENT OF MINES
 OIL AND G. S. DIVISION
 CHARLESTON

WELL LOCATION MAP
 FILE NO. KAN-1449

+ Denotes location of well on United States Topographic Maps, scale 1 to 62,500, latitude and longitude lines being represented by border lines as shown.
 - Denotes one inch spaces on border line of original tracing.

Deep Well

WEST VIRGINIA DEPARTMENT OF MINES
OIL & GAS DIVISION
W E L L R E C O R D

Permit No. Kan 1449
Walton Quad.

Gas Well
CASING & TUBING

Company	United Fuel Gas Co.		
Address	P.O. Box 1273, Charleston 25, W.Va.		
Farm	F.C. Patterson Acres 137		
Location	Poca Fk. of Little Sandy Cr.	14	16
Well No.	6384 Elev. 802.34 Gr.	10 $\frac{3}{4}$	399
District	Elk Kanawha County	8 5/8	1605
Surface		7	5042
Mineral	Della Patterson Agt., Frame, W.Va.		
Commenced	7-12-48		
Completed	10-6-48		
Not shot			
Open flow	38/10ths M in 7"		
Volume	9,811 M Oriskany		
Rock Pressure	1175 lbs. 21 hrs.		
Fresh Water	100-105 2 BPH		
Salt Water	1120'; 1200' H.F.		

Surface	0	20	Gas 1087' show
Slate	20	43	Oil 1140' show
Lime	43	51	Injun Gas 1730-1736 2/10 W 2" 60 M
Slate	51	67	Oriskany Gas 5175-5177 10/10 W 7" 22#
Red Rock	67	78	1,364 M
Slate	78	93	Oriskany Gas 5177-5191 38/10 M 7" 22#
Sand	93	115	9,811 M ✓
Slate	115	149	Well not shot
Red Rock	149	187	Open flow 9,811 M Oriskany
Slate	187	235	21 hr. R.P. 1175#
Sand	235	283	Shut in 10-6-48 in 2" tubing
Slate	283	325	
Sand	325	350	
Lime	350	385	
Sand	385	500	
Slate	500	560	
Sand	560	592	
Slate	592	698	
Sand	698	724	
Slate	724	870	
Lime	870	920	
Sand	920	945	
Slate	945	958	
Lime	958	993	
Slate	993	1040	
Salt Sand	1040	1245	
Gritty Lime	1245	1550	
Sand - Manton	1550	1562	
Little Lime	1562	1584	
Pencil Cave	1584	1595	
Big Lime	1595	1727	
Injun Sand	1727	1758	
Slate	1758	1768	
Sand - Squaw	1768	1813	
Slate & Shells	1813	2160	
Brown Shale	2160	2173	
Slate & Shells	2173	3350	
Brown Shale	3350	3405	
Slate & Shells	3405	3900	
Brown Shale	3900	3995	
Lime	3995	4100	
Slate & Shells	4100	4650	
Brown Shale	4650	4930	
White Slate	4930	4955	
Black Slate	4955	5021	
Worniferous Lime	5021	5165	
Oriskany Sand	5165	5191	
Total Depth		5191	