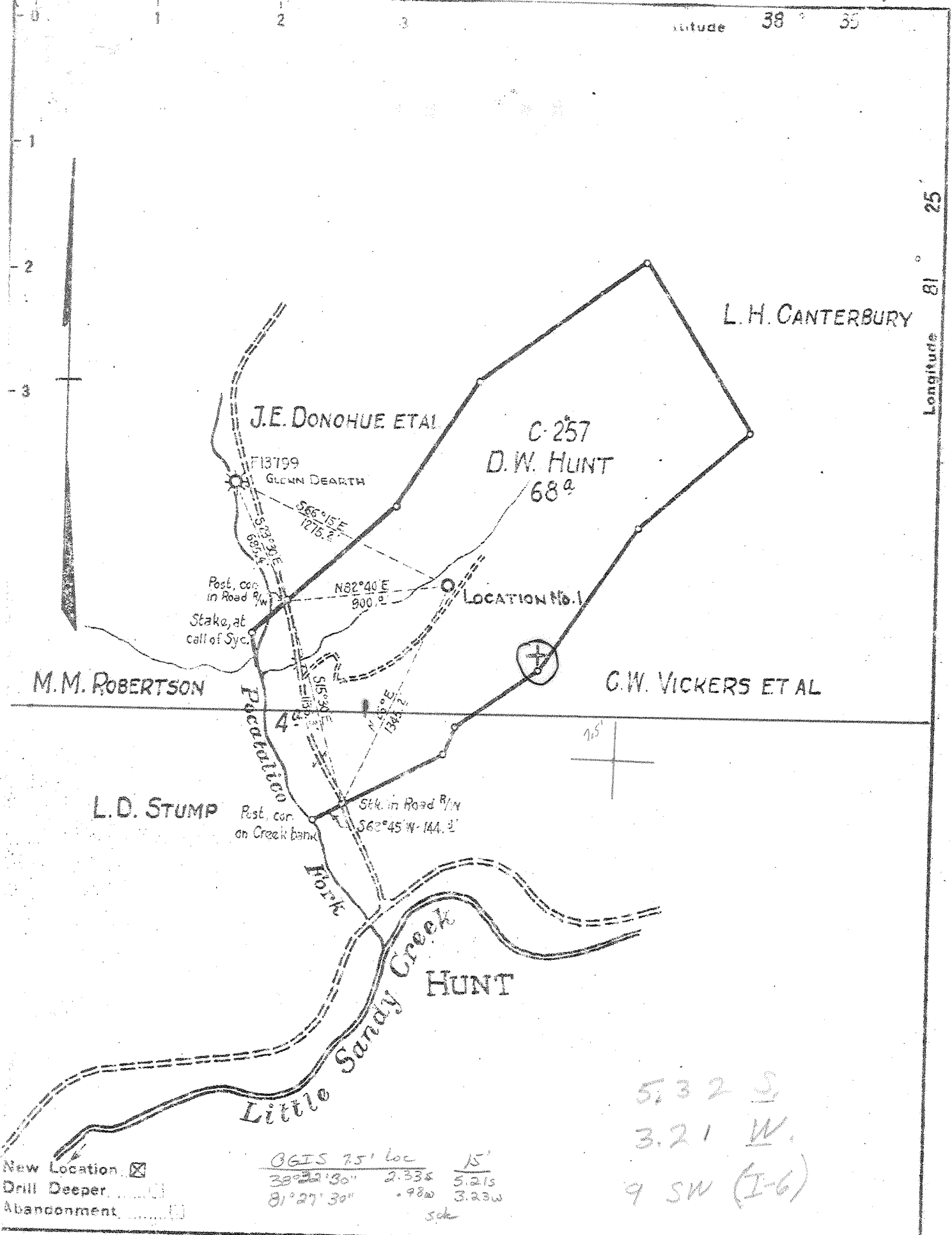


P



5.32 S
 3.21 W
 9 SW (I-6)

OGIS 75' loc 15'
 38° 22' 30" 2.334 5.215
 81° 27' 30" .980 3.23W
 Sch

New Location
 Drill Deeper
 Abandonment

Company COLUMBIAN CARBON COMPANY
 Address Box 873 CHARLESTON, W.VA.
 Farm D.W. HUNT
 Tract _____ Acres 72 Lease No. C-257
 Well (Farm) No. 1 Serial No. _____
 Elevation (Spirit Level) 821 W
 Quadrangle WALTON 9 - 3523 W322
 County KANAWHA District ELK
 Engineer C.A. Brubaker
 Engineer's Registration No. 683
 File No. _____ Drawing No. W 36/48
 Date JULY 13, 1948. Scale 1" = 660'

STATE OF WEST VIRGINIA
 DEPARTMENT OF MINES
 OIL AND GAS DIVISION
 CHARLESTON

WELL LOCATION MAP
 FILE NO. KAN-1455

+ Denotes location of well on United States Topographic Maps, scale 1 to 62,500, latitude and longitude lines being represented by border lines as shown.

- Denotes one inch spaces on border line of original tracing.

6-6-192 Deep Well

WEST VIRGINIA DEPARTMENT OF MINES
OIL & GAS DIVISION
W E L L R E C O R D

Permit No. Kan 1455		Dry Hole
Walton Quad.		CASING & TUBING
Company	Columbian Carbon Company	
Address	Box 873, Charleston 23, W.Va.	13 3/8 31'4 Same
Farm	D.W. Hunt Acres 92	10 1/2 40# 358'2 Pld.
Location	Little Sandy Creek	8 1/2 24# 1600'5 Pld.
Well No.	1 - GW-1090	Elev. 779.68' G 65/8 24# 5064'9 Same
District	Elk	Kanawha County
Surface	E.T. Hunt et al, Allen Ad., Chas., W.Va.	
Mineral	Same (for further addresses contact G.C.C.)	
Commenced	8-26-48	
Completed	12-2-48	
Not shot		Midget B.H. Packer
Volume	Dry Hole	Size 7"
Fresh Water	175' 1-13" blr. per hr.; 340' H.F.	Depth 5034' SLM
Salt Water	1160' 3-10" blrs. per hr.; 1188' H.F.	
	5160-62' 7 bbls. 7 hrs.	Coal at 457' 12"

Red Rock	0	50	CEMENT RECORD:
Slate	50	100	9-1-48 10 3/4" casing- ran 6 bags aquagel.
Red Rock	100	170	Circulation and returns.
Sand	170	220	
Red Rock	220	263	10-7-48 8 5/8" casing- ran 19 sacks
Slate	263	290	aquagel- Returns O.K.
Sand	290	334	
Slate 356' DLM-356' SLM	334	356	11-22-48 7" casing- ran 60 sacks aquagel- -
Sand	356	415	No circulation.
Slate	415	435	C.C.Crew
Sand	435	457	
Coal	457	458	
Slate	458	606	
Sand	606	662	
Slate	662	664	
Sand	664	705	
Slate	705	882	
Sand	882	926	
Slate	926	960	
Slate & Shells	960	1040	
Sand	1040	1064	
Slate	1064	1088	
Salt Sand	1088	1180	
Break	1180	1183	
Salt Sand	1183	1420	
Lime	1420	1422	
Slate	1422	1426	
Lime	1426	1453	
Red Rock	1453	1456	
Lime Black	1456	1460	
Sand - <i>Nahton</i>	1460	1507	
Black Lime - <i>L. Lime</i>	1507	1545	
White Lime - <i>B. Lime</i>	1545	1696	
Big Injun Sand	1696	1740	
Slate & Shells	1740	3330	
Brown Shale	3330	3420	
Slate & Shells	3420	3862	
Brown Shale	3862	4011	
Slate & Shells	4011	4570	
Brown Shale	4570	4880	
White Slate	4880	4910	
Brown Shale	4910	4983	5021 DLM
Corniferous Lime	4983	DLM	
	5021	SLM	5143 SLM
Oriskany Sand	5143	SLM	5225
Black Lime - <i>H</i>	5225		5252
Total Depth			5252

5021	5143	5225
780	780	780
4241	4363	4445

Gas 1637' show
 Gas 1718' show
 Gas 2003' 50/10 W 1" 75 M
 Gas 5154' SLM 2/10 W 2" 60 M
 Gas 5162' 8/10 W 2" 119 M
 Salt Water 5160-62' 7 bbls. 7 hrs. gas gauging 84 M after bailing dry