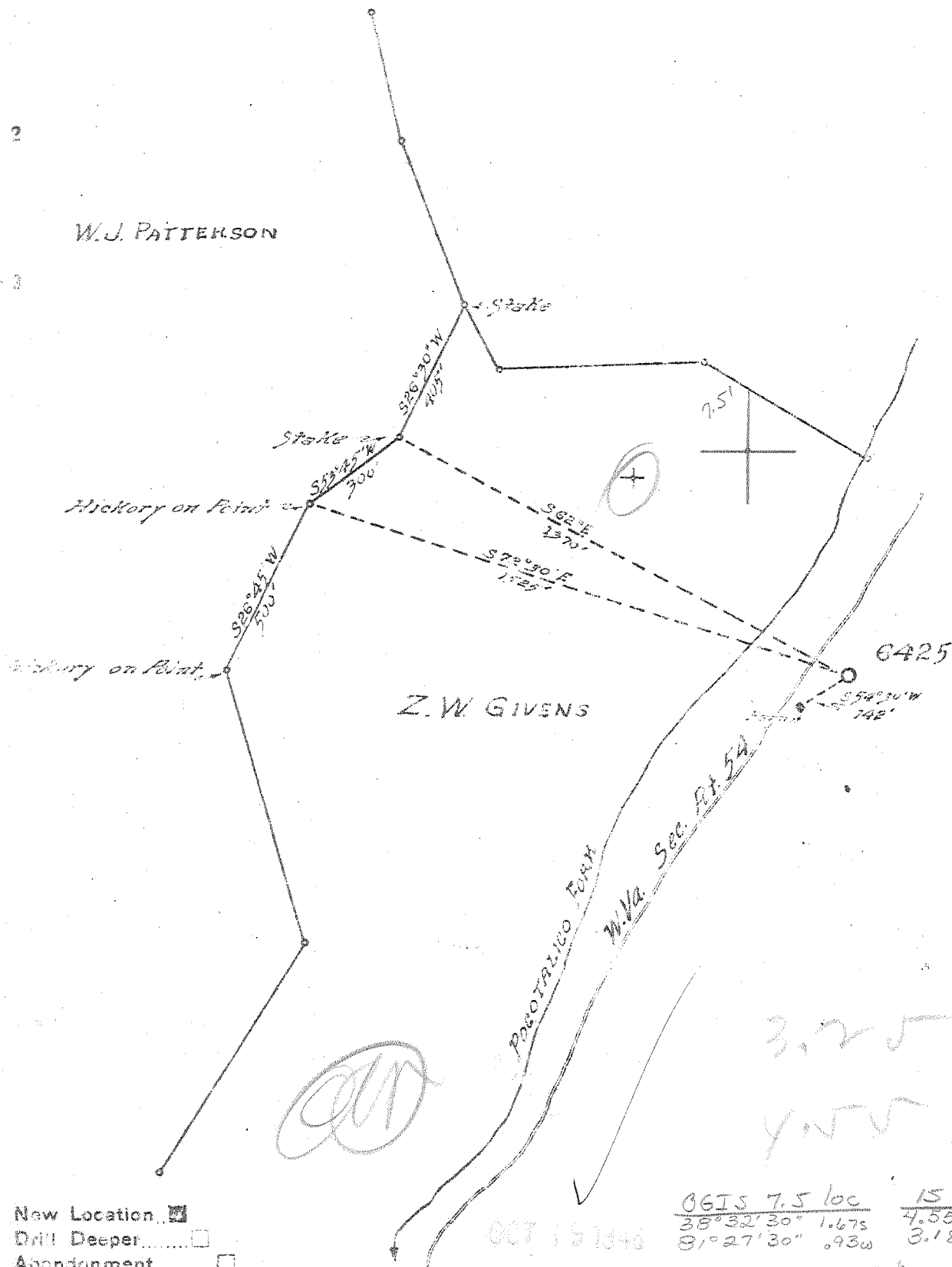


Latitude 36 35

Longitude 81 25



New Location
 Drill Deeper
 Abandonment

007 151346

0615 7.5 loc $\frac{15'}{4.55s}$
 $\frac{38^{\circ}32'30''}{81^{\circ}27'30''}$ $\frac{1.67s}{.93w}$ $\frac{4.55s}{3.18w}$
 sck

Company	UNITED FUEL GAS CO.		
Address	CHARLESTON, W.VA.		
Farm	Z.W. GIVENS		
Tract	Acres 157	Lease No.	46201
Well (Farm) No.	1	Serial No.	6425
Elevation (Spirit Level)	771.7		
Quadrangle	WALTON		
County	KANAWHA	District	ELK
Engineer	[Signature]		
Engineer's Registration No.	662		
File No.	70-69	Drawing No.	
Date	10-1-48	Scale	1"=400'

STATE OF WEST VIRGINIA
 DEPARTMENT OF MINES
 OIL AND GAS DIVISION
 CHARLESTON

WELL LOCATION MAP
 FILE NO. KAN-1472

Deep Well
 + Denotes location of well on United States Topographic Maps, scale 1 to 62,500, latitude and longitude lines being represented by border lines as shown.
 - Denotes one inch spaces on border line of original tracing.

Z.W. GIVENS No. 1 (6425) - UNITED FUEL GAS CO. - KAN-1472

4.54 S. 38° 35'
 3.21 W. 81° 25'
 9-SW (I-6)

WEST VIRGINIA DEPARTMENT OF MINES
 OIL & GAS DIVISION
 WELL RECORD

P

Permit No. Kan 1472
 SW-Walton Quad.

Gas Well
 CASING & TUBING

Company	United Fuel Gas Co.			
Address	P.O. Box 1273, Charleston 25, W.Va.			
Farm	Z.W. Given et al A 157	13 3/8	24	24
Location	Poca Fk. of Little Sandy Cr.	10 1/2	314	314
Well No.	6425 Elev. 771.7 Gr.	8 5/8	1525	1525
District	Elk Kanawha County	7	5039	5039
Surface				
Mineral	Gladys Robertson et al, Clendenin, W.Va.			
Commenced	9-10-48			
Completed	11-30-48			
Not shot				
Open flow	42/10ths W in 7"			
Volume	2795 M Oriskany			
Rock Pressure	1125 lbs. 48 hrs.			
Fresh Water	80' 3 BPH			
Salt Water	1128' 2 BPH; 1171' H.F.			

Red Clay	0	38	Gas 1054' show
Sandstone	38	43	Gas 1070' show
Shells	43	85	Gas 1605' in B. Lime exhausted
Blue Mud	85	116	Gas 1645' show
Red Rock	116	165	Gas 5145-5158 42/10 W 7" O.D. 22# 2,795 M
Slate	165	208	Well Notshot
Sand	208	238	Open flow 2,795 M Oriskany
Lime	238	265	48 hr. R.P. 1125#
Sand	265	304	Shut in 11-30-48 in 2" tubing
Slate	304	312	
Sand	312	326	
Slate	326	335	
Sand	335	447	
Slate	447	497	
Lime	497	536	
Slate	536	554	
Black Lime	554	560	
Slate & Shells	560	604	
Sand	604	627	
Slate	627	634	
Sand	634	683	
Slate & Shells	683	764	
Sand	764	783	
Slate	783	893	
Sand	893	912	
Slate & Shells	912	938	
Sand	938	953	
Slate & Shells	953	995	
Salt Sand	995	1322	
Slate	1322	1324	
Sand	1324	1436	
Slate	1436	1438	
Lime	1438	1458	
Maxon Sand	1458	1518	
Little Lime	1518	1547	
Pencil Cave	1547	1549	
Big Lime	1549	1688	
Injun Sand	1688	1740	
Sl. & Shells	1740	3700	
Shale & Shells	3700	3800	
Sl. & Shells	3800	3850	
Brown Shale	3850	4050	
Sl. & Shells	4050	4115	
White Slate	4115	4525	
Dark Shale	4525	4900	
White Slate	4900	4938	
Black Shale	4938	5013	
Corniferous Lime	5013	5137	
Oriskany Sand	5137	5158	
Total Depth		5158	

5013 5137
 772 772

 4241 4365

Deep Well