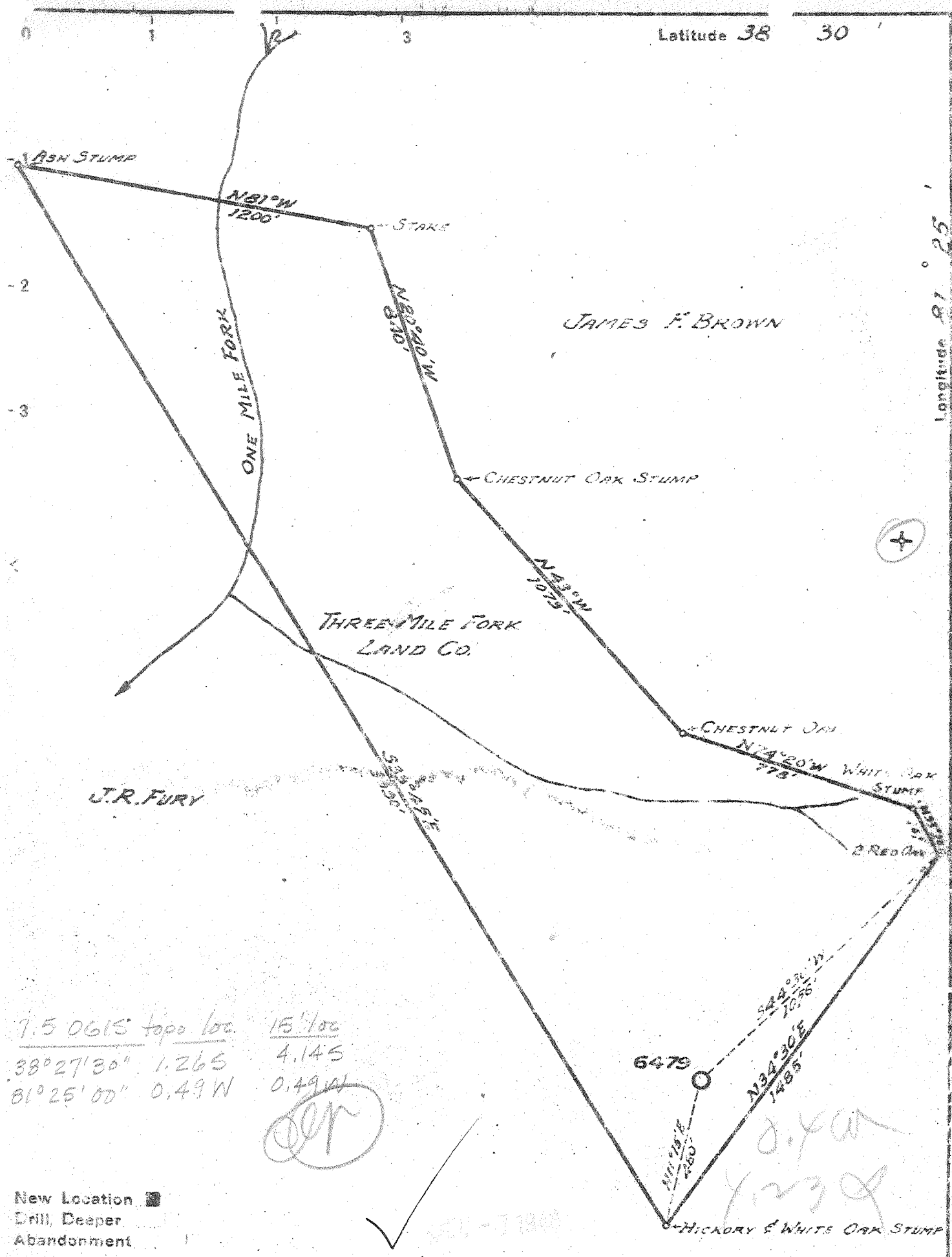


Latitude 38 30

Longitude 81 25



7.5 0615 topo loc. 15' loc
 38° 27' 30" 1.265 4.145
 81° 25' 00" 0.49 W 0.49 W

(Handwritten initials)

- New Location
- Drill, Deeper
- Abandonment

Company UNITED FUEL GAS CO
 Address CHARLESTON, W.VA.
 Farm THREE MILE FORK LAND CO
 Tract _____ Acres 71.70 Lease No. 32595
 Well (Farm) No. 1 Serial No. 6479
 Elevation (Spirit Level) 1113.15
 Quadrangle CLENDENIN
 County KANAWHA District ELK
 Engineer _____
 Engineer's Registration No. 662
 File No. 72-65 Drawing No. _____
 Date 11-18-28 Scale 1" = 400'

STATE OF WEST VIRGINIA
 DEPARTMENT OF MINES
 OIL AND GAS DIVISION
 CHARLESTON

WELL LOCATION MAP
 FILE NO. KAN-1484

Deep Well
 + Denotes location of well on United States Topographic Maps, scale 1 to 62,500, latitude and longitude lines being represented by border lines as shown.
 - Denotes one inch spaces on border line of original tracing.

4, 21 S. 38° 30'
 0.40 W. 81° 25'

WEST VIRGINIA DEPARTMENT OF MINES
 OIL & GAS DIVISION
 WELL RECORD

3 SE (J-6)

Permit No. Kan 1484				Gas Well
NW-Clendenin Quad.				CASING & TUBING
Company	United Fuel Gas Co.			
Address	P.O. Box 1273, Charleston, 25, W.Va.	10 1/2	486	486
Farm	Three Mile Fk. Land Co. A 589.39	8 5/8	1833	1833
Location	Upper Three Mile	7	5400	5400
Well No.	6479 Elev. 1113.15			
District	Elk	Kanawha County		
Surface				
Mineral	Three Mile Fk. Land Co.			
	c/o K.E. & Trust Co., Charleston, W.Va.			
Commenced	12-30-48			
Completed	4-30-49			
Date shot	6-2-49 Depth 4879 to 5140			
	with 2600# Det.			
Open flow	10/10ths W in 1"			
Volume	33 M Shale			
Rock Pressure	192 lbs. 48 hrs.			
Salt Water	1300' H.F.			
Red Rock	0	20	Sand	5552
Slate	20	35	Lime	5568
Red Rock	35	45	Total Depth	5580
Sand	45	95	Gas Injun 1968' show	
Slate	95	130	Oil Weir- 2150' show	
Red Rock	130	140	Shale Gas 4880-4900' 2/10 W 1" 15 M	
Slate	140	175	No show of gas in Oriskany	
Red Rock	175	200	Filled back to 5140'	
Slate & Shells	200	395		
Sand	395	505	Test B.S. 8/10 W 1" 30 M	
Limo	505	540	Shot 6-2-49 with 2600# Det. 4876-5140	
Sand	540	625	Test 2 hrs. after shot 10/10 W 1" 33 M	
Slate & Shells	625	668	Open flow 33 M Shale	
Sand	668	705	48 hrs. RoP. 192 #	
Slate	705	715	Shut in 6-2-49 in 8 5/8" casing.	
Sand	715	765		
Slate & Shells	765	970		
Sand	970	1020		
Slate & Shells	1020	1105		
Sand	1105	1125		
Slate	1125	1145		
Salt Sand	1145	1605		
Slate & Shells	1605	1690		
Red Rock	1690	1698		
Limo	1698	1710		
Red Rock	1710	1720		
Sand	1720	1732		
Slate & Shells	1732	1746		
Maxon	1746	1760		
Slate	1760	1768		
Little Lime	1768	1797		
Pencil Cave	1797	1805		
Big Lime	1805	1965		
Injun Sand	1965	2000		
Slate & Shells	2000	2120		
Weir Sand	2120	2210		
Slate & Shells	2210	2405		
Berea Shells	2405	2515		
Slate & Shells	2515	3590		
Brown Shale	3590	3657		
Slate & Shells	3657	4140		
Brown Shale	4140	4380		
White Slate	4380	4880		
Brown Shale	4880	5140		
White Slate	5140	5240		
Brown Shale	5240	5320		
Black Shale	5320	5370		
Corniferous	5370	5504		
Oriskany	5504	5528		
Limo	5528	5545		
Limo Sand	5545	5552		

5370 5504 5568
 1113 1113 1113
 4257 4391 4455

Deep Well