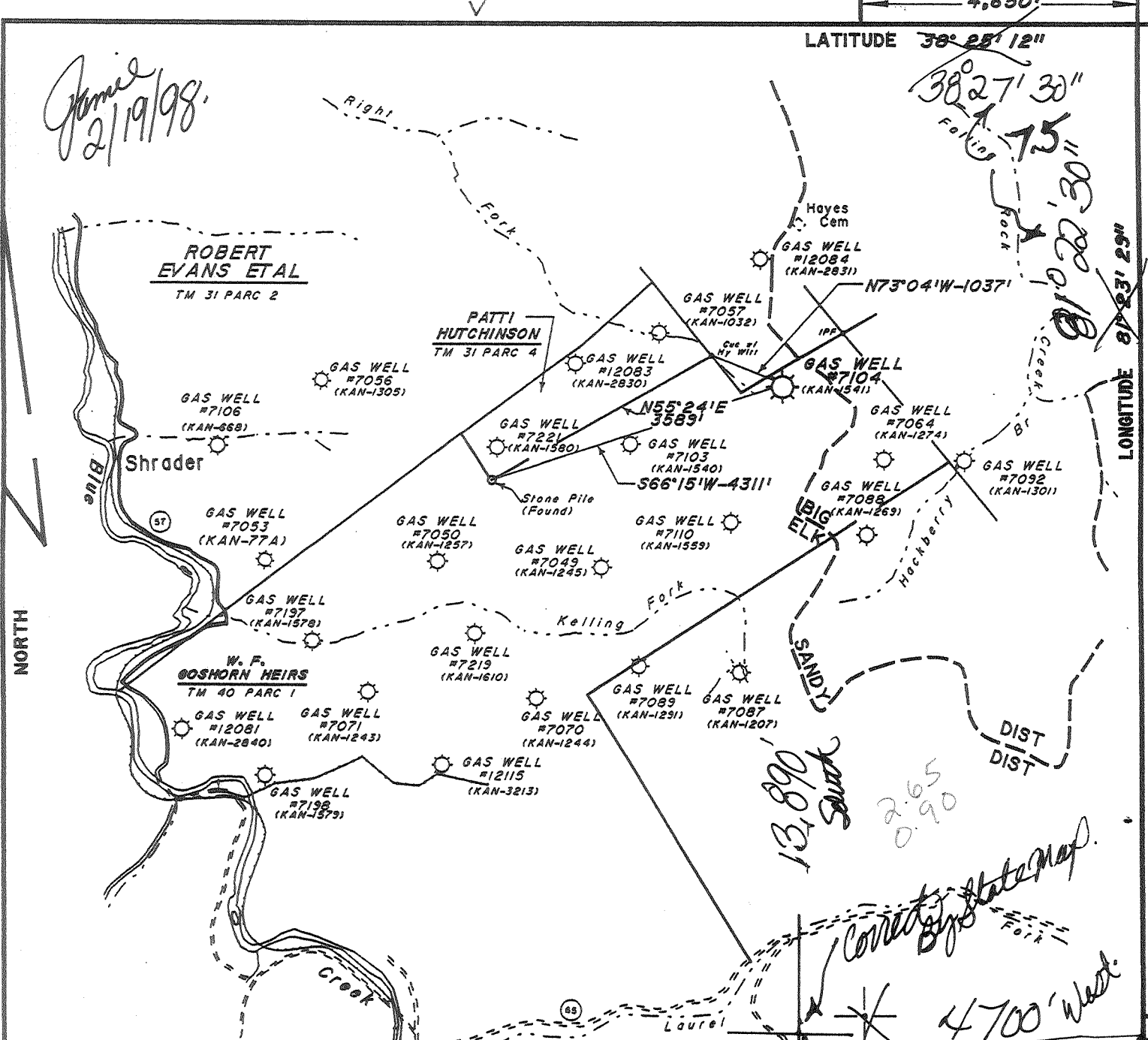


*James
2/19/98.*



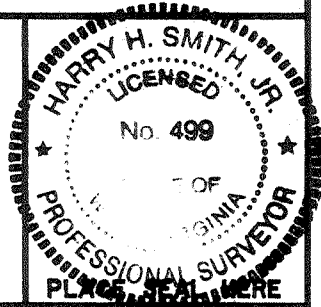
Notes
Well Location Determined
By Conventional Field Survey
And GPS.

Form Map 48 SO 72 - 63
(+) DENOTES LOCATION OF WELL ON UNITED STATES TOPOGRAPHIC MAPS (7 1/2")

Bench Mark Description
Standard Disc. in concrete post stamped
231 SKS - 1956 4' North of North rail,
4' west of east pier of R.R. Bridge
Over Elklick Creek at Coco, W.V.
Elev. 651.63'

FILE NO. _____
DRAWING NO. 12379
SCALE 1"=2000'
MINIMUM DEGREE OF
ACCURACY 1:200
PROVEN SOURCE OF
ELEVATION U.S.G.S. DISK
STAMPED "231-SKS-1956"
(See Benchmark Note Above)

I THE UNDERSIGNED, HEREBY CERTIFY THAT
THIS PLAT IS CORRECT TO THE BEST OF MY
KNOWLEDGE AND BELIEF AND SHOWS ALL THE
INFORMATION REQUIRED BY LAW AND THE REGU-
LATIONS ISSUED AND PRESCRIBED BY THE DEPART-
MENT OF ENERGY.
(SIGNED) Harry H. Smith, Jr.
R.P.E. _____ L.L.S. 499



WEST VIRGINIA
DIVISION OF ENVIRONMENTAL PROTECTION
OFFICE OF OIL AND GAS
#10 McJUNKIN ROAD
NITRO, WEST VIRGINIA 25143-2506



DATE JULY 7, 1997
OPERATOR'S WELL NO. 2104
API WELL NO. 47 239 01541 D.

WELL TYPE: OIL GAS LIQUID INJECTION WASTE DISPOSAL
(IF "GAS,") PRODUCTION STORAGE DEEP SHALLOW
LOCATION: ELEVATION 1034 WATER SHED RIGHT FORK OF UPPER THREE MILE CK. OF BLUE CREEK
DISTRICT ELK COUNTY KANAWHA

QUADRANGLE BLUE CREEK, WV COORDINATES LAT: 38° 25' 12" LONG: 81° 23' 29"
SURFACE OWNER W.F. GOSHORN HRS. - c/o JAMES F BROWN III ACREAGE 1161
OIL & GAS ROYALTY OWNER COLUMBIA GAS TRANS. CORP. LEASE ACREAGE 294
COAL OWNER W.F. GOSHORN HRS. LEASE NO. DEED 14334

PROPOSED WORK: DRILL CONVERT DRILL DEEPER REDRILL FRACTURE OR
STIMULATE PLUG OFF OLD FORMATION PERFORATE NEW
FORMATION OTHER PHYSICAL CHANGE IN WELL (SPECIFY) STORAGE
Well drilled in 1957 by United Fuel Co. 5404. Cold Plans will drill deeper
PLUG AND ABANDON CLEAN OUT AND REPLUG
TARGET FORMATION ORISKANY ESTIMATED DEPTH 5374' to 5475' FEB 20 1998
WELL OPERATOR COLUMBIA GAS TRANS CORP DESIGNATED AGENT RICHARD L COTY
ADDRESS PO BOX 1273, CHARLESTON, WV ADDRESS PO BOX 1273, CHARLESTON, WV
25325 - 1273 25325 - 1273

FORM 9-AW (REV)

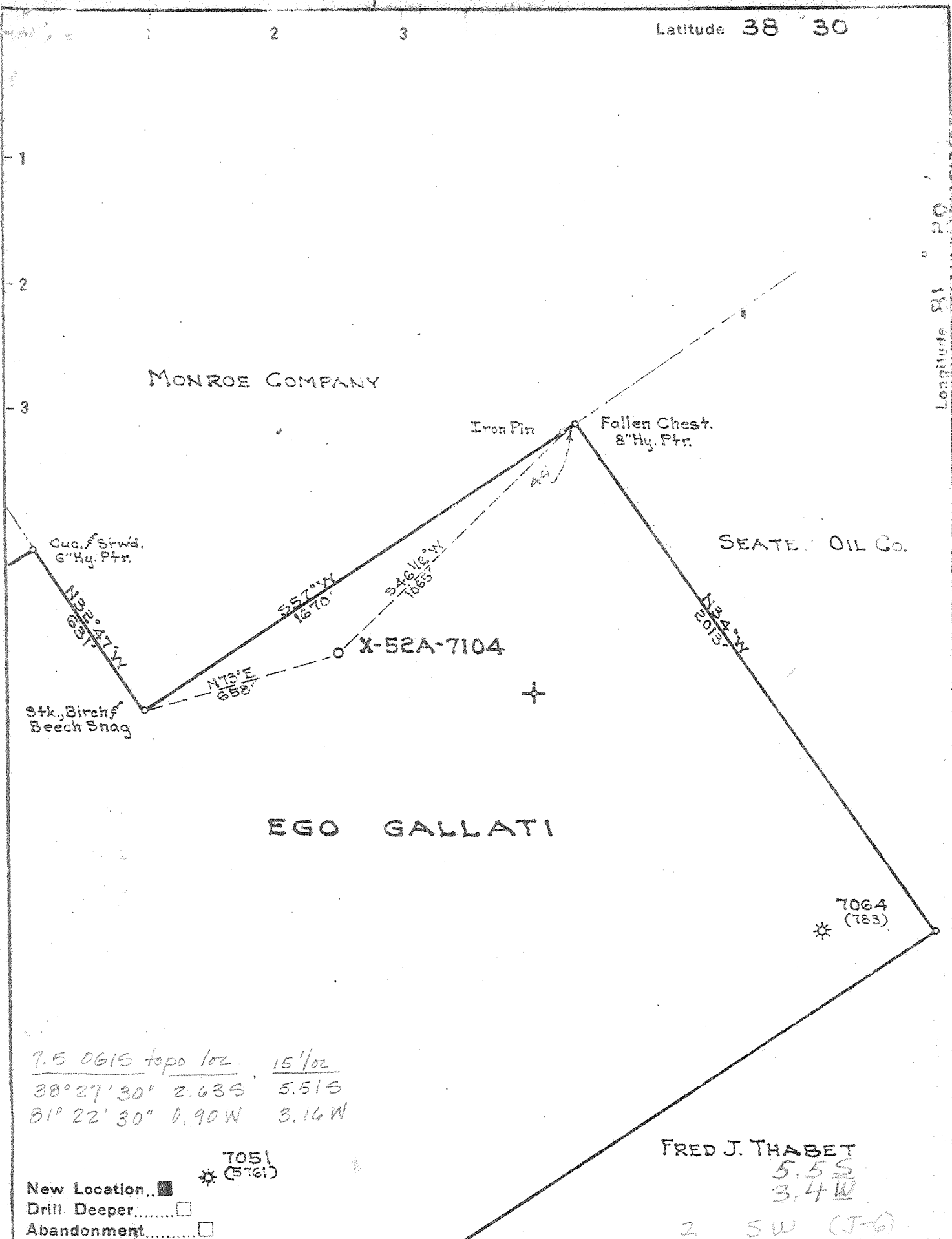
KANAWHA COUNTY NAME PERMIT 1541

DEEP WELL

P

Latitude 38 30

Longitude 81 20



7.5 0615 topo loc. 15' loc
 38° 27' 30" 2.63S 5.51S
 81° 22' 30" 0.90W 3.16W

New Location * 7051 (5761)
 Drill Deeper
 Abandonment

FRED J. THABET
 5.5S
 3.4W
 2 SW (J-6)

Company UNITED FUEL GAS CO.
 Address CHARLESTON, W.VA.
 Farm EGO GALLATI
 Tract Acres 455.4 ^{Deed} Lease No. 14334
 Well (Farm) No. 7 Serial No. X-52A-7104
 Elevation (Spirit Level) 1034.03
 Quadrangle CLENDENIN -1/C
 County KANAWHA District ELK
 Engineer _____
 Engineer's Registration No. 662
 File No. 74-63 Drawing No. _____
 Date 8-17-50 Scale 1" = 400

STATE OF WEST VIRGINIA
 DEPARTMENT OF MINES
 OIL AND GAS DIVISION
 CHARLESTON

WELL LOCATION MAP
 FILE NO. KAN-1541

+ Denotes location of well on United States Topographic Maps, scale 1 to 62,500, latitude and longitude lines being represented by border lines as shown.

- Denotes one inch spaces on border line of original tracing.

IMPERIAL TRACING CLOTH
 K & T CO., N. Y.

Orisk Storage 7-0 2/15 Deep Well ✓

WEST VIRGINIA DEPARTMENT OF MINES
OIL & GAS DIVISION
W E L L R E C O R D

Permit No. Kan-1541
Clendenin Quad.

Gas Well

	Casing & Tubing		
Company	United Fuel Gas Co.	14"	37
Address	P. O. Box 1273, Charleston 25, W.Va.	10-1/4	1390
Farm	Ego Gallati Acres 455.4	8-5/8	1627
Location	Three Mile Fk. of Blue Cr.	7	5285
Well No. X-52A-7104	Elev. 1034.03	2	5404
District	Elk County Kanawha		
Mineral	U.F.G.Co.		
Commenced	9/14/50		
Completed	3/1/51		
Date Shot	2/26/51 from 5383 to 5404		
	With 200 # Gel.		
Open Flow	12/10ths Merc. in 7"		
Volume	1,494 M. Oriskany		
Rock Pressure	420 lbs., 17 hrs.		
Salt water	1330-1335 feet		

Surface	0	25	
Sand	25	80	
Slate	80	150	
Sand	150	201	
Slate	201	384	
Sand	384	514	
Slate	514	576	
Sand	576	606	
Slate & shs.	606	885	
Salt Sand	885	1235	
Slate	1235	1240	water 1330-1335' sand
Salt sand	1240	1388	
Slate	1388	1390	
Lime	1390	1398	
Red Rock	1398	1408	
Lime	1408	1420	
Slate & shs.	1420	1514	
Maxon Sand	1514	1544	
Slate	1544	1547	
Little Lime	1547	1597	
Pencil Cave	1597	1600	Show gas 1708' , 1713' , 1730'
Big Lime	1600	1780	
Slate	1780	1815	show gas 1824'
Big Injun	1815	1865	
Weir Sand	1865	2010	
Slate & shs.	2010	3350	
Brown Shell	3350	3500	
Slate & shs.	3500	3875	
Brown shell	3875	3950	
Slate & shs.	3950	4000	
Brown shell	4000	4160	
White Slate	4160	4560	
Brown Shale	4560	4600	
Slate & shs.	4600	4633	
Brown Shale	4633	5085	
White Slate	5085	5115	
Brown Shell	5115	5255	
Corniferous Lime	5255	5374	Gas 5387-5402 19/10 W 5 1/2" 17# 1,099 M
Oriskany Sand	5374	5404	
Total Depth		5404	

5255	5374
1034	1034
4221	4340

Test before shot 18/10 W 5 1/2" 17# 1,070 M. Shot 2/26/51 with 200# gle. from 5383 - 5404.

Test 2 hr. after shot 12/10 W 7" 22# 1,494 M

FINAL OPEN FLOW - 1,494 M * oriskany 17 hr. r. p. 420#

Shut in 2/26/51 in 2" tubing

Electric Log

WR-35

20-Feb-98
API # 47- 39-01541 D

State of West Virginia
Division of Environmental Protection
Section of Oil and Gas

Reviewed [Signature]

Well Operator's Report of Well Work

Received
Office of Oil & Gas
Permitting

Farm name: GOSHORN, W. F. - HEIRS Operator Well No.: 7104

MAR 01 1998

LOCATION: Elevation: 1,034.00 Quadrangle: BLUE CREEK

WV Division of
Environmental Protection

District: ELK County: KANAWHA
Latitude: 14000 Feet South of 38 Deg. 27Min. 30 Sec.
Longitude 4650 Feet West of 81 Deg. 22 Min. 30 Sec.

Company: COLUMBIA GAS TRANSMISSION
P. O. BOX 1273
CHARLESTON, WV 25325-1273

Agent: RICHARD L. COTY

Inspector: CARLOS HIVELEY
Permit Issued: 02/16/98
Well work Commenced: 05/18/98
Well work Completed: 07/20/98
Verbal Plugging
Permission granted on: _____
Rotary _____ Cable _____ Rig
Total Depth (feet) 5452'
Fresh water depths (ft) N/A
Salt water depths (ft) N/A

Casing & Tubing Size	Used in Drilling	Left in Well	Cement Fill Up Cu. Ft.
14"		19'	
8-5/8"		1634'	
7"		5280'	
4-1/2"		5452'	90 sx

Is coal being mined in area (Y/N)? N
Coal Depths (ft): N/A

OPEN FLOW DATA

Producing formation Oriskany Storage Pay zone depth (ft) 5369' - 5389'
 Gas: Initial open flow N/A MCF/d Oil: Initial open flow N/A Bbl/d
 Final open flow N/A MCF/d Final open flow N/A Bbl/d
 Time of open flow between initial and final tests N/A Hours
 Static rock Pressure N/A psig (surface pressure) after N/A Hours

Second producing formation _____ Pay zone depth (ft) _____
 Gas: Initial open flow _____ MCF/d Oil: Initial open flow _____ Bbl/d
 Final open flow _____ MCF/d Final open flow _____ Bbl/d
 Time of open flow between initial and final tests _____ Hours
 Static rock Pressure _____ psig (surface pressure) after _____ Hours

NOTE: ON BACK OF THIS FORM PUT THE FOLLOWING: 1). DETAILS OF PERFORATED INTERVALS, FRACTURING OR STIMULATING, PHYSICAL CHANGE, ETC. 2). THE WELL LOG WHICH IS A SYSTEMATIC DETAILED GEOLOGICAL RECORD OF ALL FORMATIONS, INCLUDING COAL ENCOUNTERED BY THE WELLBORE.

For: COLUMBIA GAS TRANSMISSION CORP.

By: [Signature]
Date: 2/22/99

MAR 16 1999

KAN 1541 D

- 5/28/98 Ran 133 jts (5452') of 4-1/2", 11.6 #/ft, N-80 casing cemented with 90 sx Class A.
- 7/14/98 Perforated Oriskany from 5369' - 5389' with 120 shots.
- 7/16/98 Fractured Oriskany with N2 Assist Deltafrac using 415 bbls of H2O, 175 MSCF N2, 25,600# 20/40 sand, at 1 - 4 PPG.